

TIKI TINI LOUNGE

Date: Aug.09.12



Size: 45" W x 57 H"

Level: Beginner

Quilt designed by Marinda Stewart

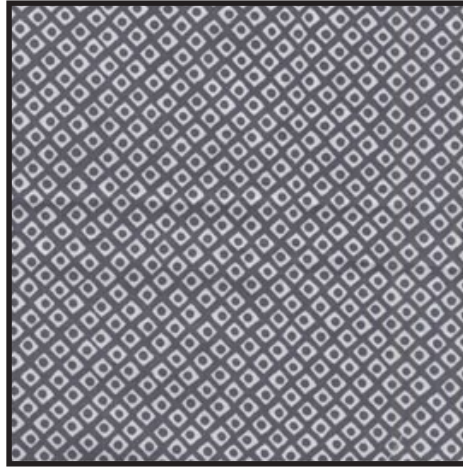


118 West 22nd Street 5th FL. New York, NY 10011 Tel: 212.704.0774 Fax: 212. 633. 0272
email: info@michaelmillerfabrics.com www.michaelmillerfabrics.com

FABRIC REQUIREMENTS



**DC5441 Lava
Tiki Winki
3/8 yard**



**C4842 Gray
Dot 'N' Squares
3/8 yard**



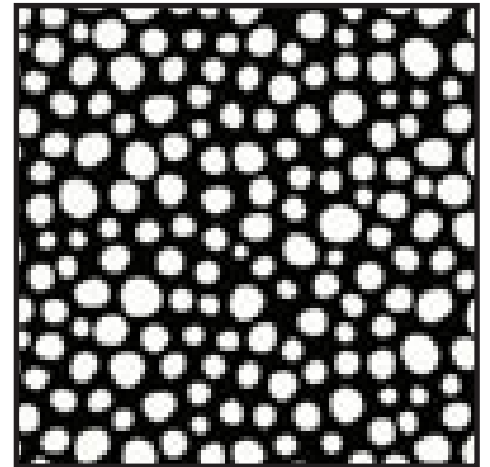
**DC5012 Macnut
Tiki Woodblock
3/4 yard**



**DC5218 Cocoa
Gingerbread
5/8 yard**



**DC5443 Onyx
Kimo
3/8 yard**



**DC5718 Black
Little Spots
3/8 yard**



**Jet Black
3/8 yard**



**DC5218 Lava
Gingerbread
1 yard**

Backing & Batting: 50" x 62"

"Tiki Tini Lounge"
 Quilt by Marinda Stewart

Size: Approximately 45" W x 57" H Skill Level : Beginner

Materials

Fabric	Yardage	Cutting
DC5441 Lava Tiki Winki	3/8 yard	Fussy cut (12) 4 1/2" squares *
C4842 Gray Dot 'N' Squares	3/8 yard	(24) 1 1/2" x 4 1/2" (24) 1 1/2" x 6 1/2"
DC5012 Macnut Tiki Woodblock	3/4 yard	(24) 1 3/4" x 6 1/2" (24) 1 3/4" x 9" **
DC5218 Cocoa Gingerbread	5/8 yard	(24) 1 1/4" x 9" (24) 1 1/4" x 10 1/2"
DC5443 Onyx Kimo	3/8 yard	(17) 2 1/2" x 10 1/2"
DC5718 Black Little Spots	3/8 yard	(2) 2" x 36 1/2" (2) 2" x 51 1/2" ***
Jet Black	3/8 yard	(6) 2 1/2" squares (2) 1 1/2" x 34 1/2" (2) 1 1/2" x 48 1/2" **
DC5218 Lava Gingerbread	1 yard	(2) 3 1/2" 39 1/2" (2) 3 1/2" x 57 1/2" *** (6) 2 1/2" x W.O.F. - binding

Also Needed:

45" square backing, 45" square batting, thread to match, scissors, straight pins, rotary cutter, acrylic ruler, and mat.

- * Center on four motifs wide x four motifs tall plus seam allowance.
- ** Cut pieces vertically with the dark stripe plus 1/4" seam allowance.
- *** Pieced for length.

Disclaimers

This pattern is provided as a courtesy to quilt stores, catalogs, and quilters. Michael Miller Fabrics, LLC is not responsible for the accuracy of any kits packaged to accompany this pattern. Please direct any inquiries to the kit maker.

Yardage requirements for this pattern may allow for excess yardage to accommodate specific placement of motifs or to allow for any fussy-cutting to achieve the finished quilt design.

While every attempt has been made to give accurate measurements, yardage requirements, and construction directions; this does not allow personal variations in measuring, cutting, and or sewing. The enclosed directions were used in the construction of the original quilt.

Directions

1. Sew one CX4842 1 ½" x 4 ½" piece to the top and bottom of one DC5441 4 ½" square. Sew one CX4842 1 ½" x 6 ½" piece to each side. Make (12) total.
2. Sew one DC5012 1 ¾" x 6 ½" piece to the top and bottom of one 6 ½" block. Sew one DC5012 1 ¾" x 9" piece to each side. Make (12).
3. Sew one DC5218 Cocoa 1 ¼" x 9" piece to the top and bottom of one 9" block. Sew one DC5218 Cocoa 1 ¼" x 10 ½" to each side. Make (12) total.
4. Alternating one 10 ½" block with one DC5443 2 ½" x 10 ½" piece, sew together three blocks with two DC5443 2 ½" x 10 ½" pieces. Make four rows. Set aside.
5. Alternating one DC5443 2 ½" x 10 ½" piece with one Jet Black 2 ½" square. Use three DC5443 2 ½" x 10 ½" pieces end to end with two 2 ½" squares. Make three rows.
6. Alternate rows of blocks with 2 ½" sashing rows for quilt top. Begin and end with a row of blocks as shown.
7. Sew one Jet Black 1 ½" x 34 ½" piece to the top and bottom of the quilt. Sew one Jet Black 1 ½" x 48 ½" (pieced for length) piece to each side.
8. Sew one DC5718 Black 2 ½" x 36 ½" piece to the top and bottom of the quilt. Sew one DC5718 Black 2 ½" x 51 ½" piece (pieced for length) to each side.
9. Sew one DC5218 Lava 3 ½" x 39 ½" piece to the top and bottom of the quilt. Sew one DC5218 Lava 3 ½" x 57 ½" piece (pieced for length) to each side.
10. Layer backing, batting, and quilt top. Baste.
11. Quilt as desired.
12. Bind quilt using DC5218 Lava 2 ½" strips, pieced as needed for length.