

FABRIC REQUIREMENTS

Sweet Baby Zoo



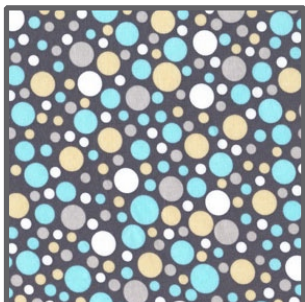
CX4061 Sea Zoology
1 1/4 yards



CX2490 Aulait Dumb Dot
1/4 yard



CX2490 Beige Dumb Dot
1/4 yard



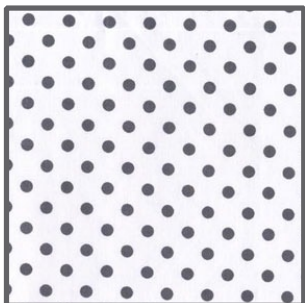
CX3136 Sea Play Dot
1/4 yard



CX2490 Sea Dumb Dot
1/4 yard



CX2490 Gray Dumb Dot
1/4 yard



CX2490 Haze Dumb Dot
1/4 yard



CX2490 Charcoal Dumb Dot
1/4 yard



CX3188 Gray Camouflage
1 1/2 yards



CX3137 Sea Play Stripe
1/3 yard



Size: 38"W x 41 1/2"H

Quilt designed by Ellen Maxwell
Skill Level: Beginner



118 West 22nd Street 5th Floor New York, NY 10011
Tel: 212.704.0774 Fax: 212. 633. 0272 email: info@michaelmillerfabrics.com

www.michaelmillerfabrics.com

"Sweet Baby Zoo"
Quilt by Ellen Maxwell

Size: 38"W x 41 1/2"H - Skill Level: Beginner

Materials

Fabric	Yardage	Swatch
CX4061 Sea Zoology	1 1/4 yards	
CX2490 Aulait Dumb Dot	1/4 yard	
CX2490 Beige Dumb Dot	1/4 yard	
CX3136 Sea Play Dot	1/4 yard	
CX2490 Sea Dumb Dot	1/4 yard	
CX2490 Gray Dumb Dot	1/4 yard	
CX2490 Haze Dumb Dot	1/4 yard	
CX2490 Charcoal Dumb Dot	1/4 yard	
CX3188 Gray Camouflage	1 1/2 yards	
CX3137 Sea Play Stripe	1/3 yard	
1/3 yard CX3137_Sea: Cut five strips - 2" x width of the fabric Sew end to end for binding. Enough fabric is allowed for French Fold Binding.		

Disclaimers

This pattern is provided as a courtesy to quilt stores, catalogs, and quilters. Michael Miller Fabrics, LLC is not responsible for the accuracy of any kits packaged to accompany this pattern. Please direct any inquiries to the kit maker.

Yardage requirements for this pattern may allow for excess yardage to accommodate specific placement of motifs or to allow for any fussy-cutting to achieve the finished quilt design.

While every attempt has been made to give accurate measurements, yardage requirements, and construction directions; this does not allow personal variations in measuring, cutting, and or sewing. The enclosed directions were used in the construction of the original quilt.

Directions

Step One:

From the top fabric listed - CX4061_Sea
CUT LENGTHWISE - 2 - 2 1/2" x 41 1/2" 3 - 6" x 41 1/2"

Step Two:

From each of the SEVEN polka dot fabrics listed
CUT 1 - 6 1/2" x width of the fabric

Step Three:

Sew the SEVEN polka dot strips - in the order listed - long sides together - 1/4" seams.

Step Four:

Press all seams in one direction. Then stitch the FIRST polka dot fabric to the LAST polka dot fabric - making a tube. Press the last seam in the same direction as the others.

Step Five:

With a ruler and rotary cutter, square up one end of the fabric tube. Cut fifteen 1 1/2" strips from the tube - always checking to be sure the cutting side of the tube is square.

Step Six:

Randomly sew 3 of the 1 1/2" strips together to form 5 lengthwise strip sets. Carefully take the seam apart between to polka dots or cut one of the 6" polka dot sections in half to make the sewing of the strips more random. REFER TO THE PHOTOGRAPH OF THE QUILT!!

Step Seven:

Sew the strip sets and animal strips together to make the quilt top. Start with a 2 1/2" strip of the animals, then a pieced strip, then a 6" animal strip, another pieced strip - continuing on to end with a 2 1/2" animal strip.

Step Eight:

Layer the quilt top and backing with your choice of batting - quilt and bind!