

BALANCING ACT



Quilt designed by: Scott Hansen



118 West 22nd Street 5th Floor New York, NY 10011
Tel: 212.704.0774 Fax: 212. 633. 0272 email: info@michaelmillerfabrics.com

www.michaelmillerfabrics.com

Balancing Act

Featuring *It's a Girl's World*
Designed by Scott Hansen for

Model quilt pieced by Scott Hansen
and quilted by Cathy Kessel

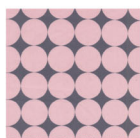
www.bluenickelstudios.com



Finished size 52" wide by 58" high

Fabric requirements—(you will have leftovers—try incorporating them into the back!!)

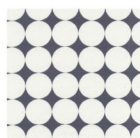
- A fat quarter each of:



CX0910_Bloom



CX0910_Blossom

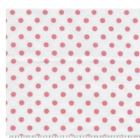


CX0910_Charcoal



CX3359_Bloom

- 1/2 yard each of:



CX2490_Blush



CX3095_Petal



CX3137_Bloom



CX3095_Charcoal



CX4892_Bloom



CX3095_Bloom

- 1 1/3 yard of:

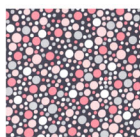


CX2490_Charcoal



CX2490_Petal

- 1 1/4 yard of:



CX3136_Bloom



From CX0910 Bloom, CX0910 Blossom, CX0190 Charcoal, and CX3359 Bloom cut a random assortment of (28) Square A – 2.5” x 2.5” and (26) Rectangle B – 2.5” x 4.5”

From CX2490 Charcoal cut (28) Rectangle C1 – 1.5” x 2.5” and (76) Rectangle D1 – 1.5” x 4.5” and (3) 2.5” x 40.5” strips and (3) 2.5” x 12.5” strips.

From CX2490 Petal cut (28) Rectangle C2 – 1.5” x 2.5” and (76) Rectangle D2 – 1.5” x 4.5” and (3) 2.5” x 40.5” strips and (3) 2.5” x 12.5” strips

For Row One cut (12) Rectangle E – 2.5” x 4.5” and (2) Rectangle F – 4.5” x 6.5” and (3) Rectangle G – 4.5” x 8.5” from CX2490 Blush

For Row Two cut (13) Rectangle E – 2.5” x 4.5” and (4) Rectangle G – 4.5” x 8.5” from CX3095 Petal

For Row Three cut (12) Rectangle E – 2.5” x 4.5” and (2) Rectangle F – 4.5” x 6.5” and (3) Rectangle G – 4.5” x 8.5” from CX3137 Bloom

For Row Four cut (12) Rectangle E – 2.5” x 4.5” and (2) Rectangle F – 4.5” x 6.5” and (3) Rectangle G – 4.5” x 8.5” from CX3095 Charcoal

For Row Five cut (13) Rectangle E – 2.5” x 4.5” and (4) Rectangle G – 4.5” x 8.5” from CX4892 Bloom

For Row Six cut (12) Rectangle E – 2.5” x 4.5” and (2) Rectangle F – 4.5” x 6.5” and (3) Rectangle G – 4.5” x 8.5” from CX3095 Bloom



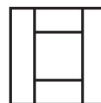
Piecing directions for Rows One, Three, Four, and Six:

Directions refer to Rectangles C and D...Just remember that for Rows One and Three this is C1 and D1(charcoal) and for Rows Four and Six this is C2 and D2 (pink)

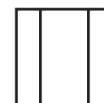
Taking an assorted 5 of Square A, sew 2 Rectangle C's to the top and bottom as shown:



Then sew 2 Rectangle D's and sew to each side as shown:



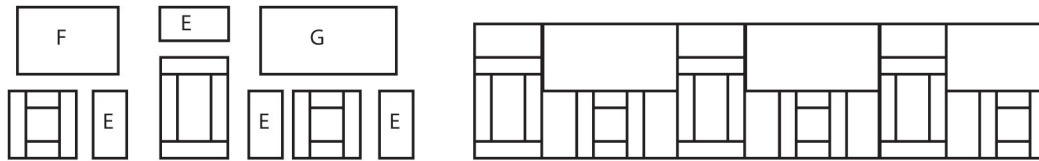
Next take an assorted 4 of Rectangle B, and sew 2 Rectangle D's to each side as shown:



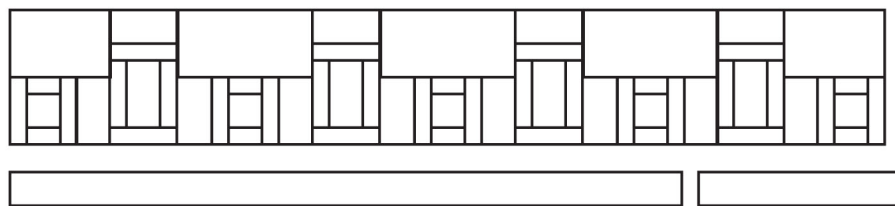
Then Sew 2 Rectangle D's to the top and bottom as shown:



Now sew these pieced blocks to the E, F, and G Rectangles as shown (referring to photo, keeping the E,F, and G Rectangles in sets that are for each separate row):



Now take one of the 40.5"x 2.5" strips and one of the 12.5"x 2.5" strip and sew them together end to end then sew this along the bottom of each row (being sure to sew Charcoal strips to Charcoal sets and Pink strips to Pink sets – refer to the photo)

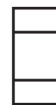
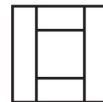


Piecing directions for Rows Two and Five:

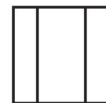
Again the directions refer to Rectangles C and D....Just remember that for Row Two this is C1 and D1(charcoal) and for Row Five this is C2 and D2 (pink)

Taking an assorted 4 of Square A, sew 2 Rectangle C's to the top and bottom as shown:

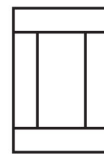
Then sew 2 Rectangle D's and sew to each side as shown:



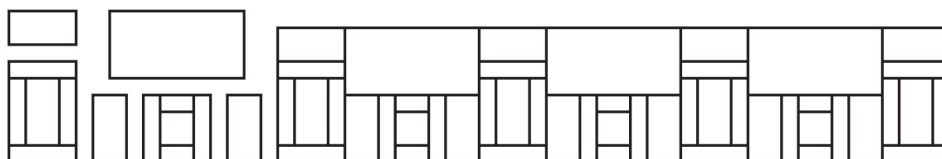
Next take an assorted 5 of Rectangle B, and sew 2 Rectangle D's to each side as shown:



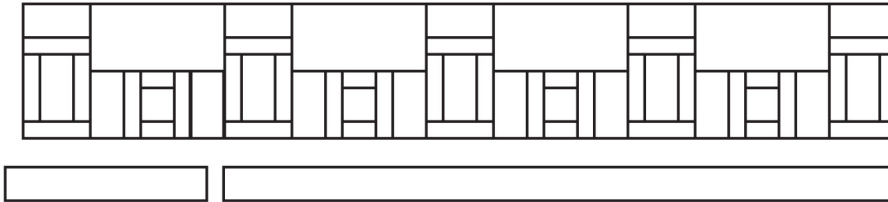
Then Sew 2 Rectangle D's to the top and bottom as shown:



Now sew these pieced blocks to the E, F, and G Rectangles as shown (referring to photo, keeping the E,F, and G Rectangles in sets that are for each separate row):



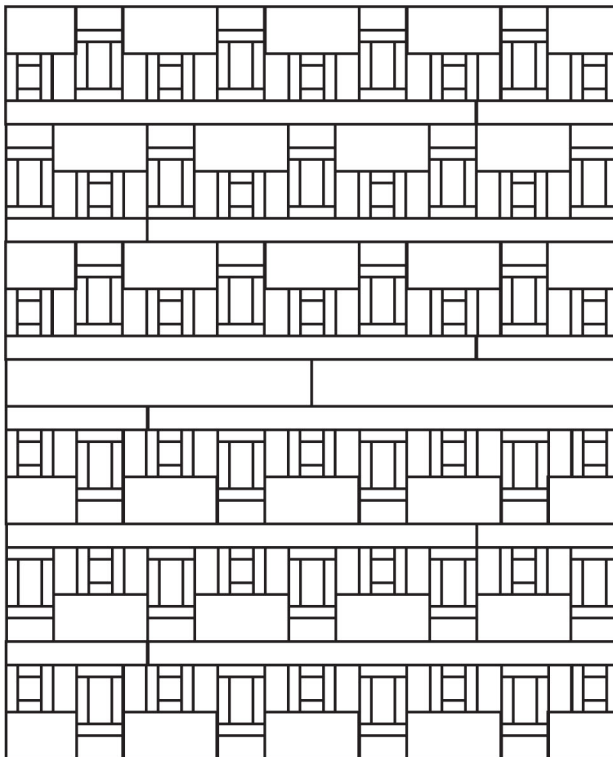
Now take the last 40.5"x 2.5" strips and 12.5"x 2.5" strips and sew them together end to end then sew this along the bottom of each row (being sure to sew the Charcoal strip to the Charcoal set (row2) and Pink strips to the Pink set (Row5) – refer to the photo)



Now cut to 4.5" x 26.5" strips from CX3136 Bloom and sew together end to end for the middle sash.



Using the diagram and photo sew all the rows together and you are ready to finish it up!!



Quilt the top and then bind it with your favorite method using CX3136 Bloom. Don't forget to include a label!! And if you would like to add a picture of your project to the Blue Nickel Studios flickr page, I would be most delighted. Here is the link:
www.flickr.com/groups/1294513@N23

© 2011 Blue Nickel Studios™

All Rights Reserved

One last note: I have written this pattern to the best of my ability. However I am my only editor at the moment, so please contact me if you have any questions regarding this pattern. Thanks!

