

# RUTH ANN BARGELLO



Quilt designed by Marinda Stewart

Size: 42" x 56"

Level: Confident Beginner/Intermediate

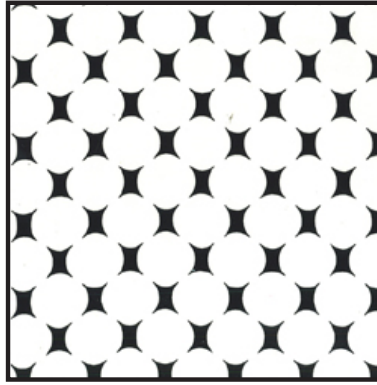


118 West 22nd Street 5th FL. New York, NY 10011 Tel: 212.704.0774 Fax: 212. 633. 0272  
email: [info@michaelmillerfabrics.com](mailto:info@michaelmillerfabrics.com) [www.michaelmillerfabrics.com](http://www.michaelmillerfabrics.com)

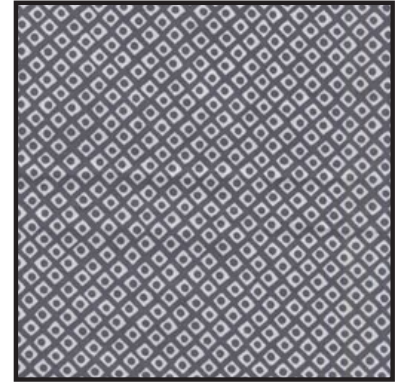
# FABRIC REQUIREMENTS



**CX5244 Gray  
Ruth Ann  
1 5/8 yard**



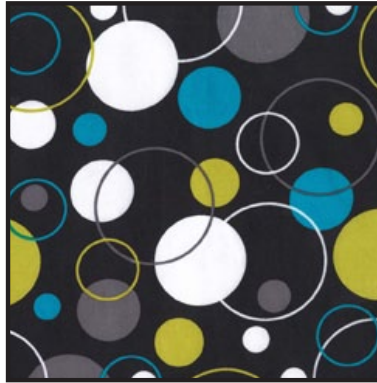
**CX5452 Ivory  
Atomic Dot  
1/2 yard**



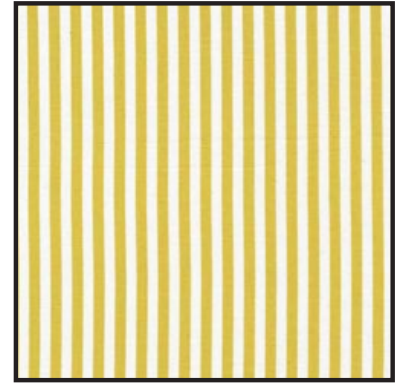
**CX4842 Gray  
Dot 'N' Square  
5/8 yard**



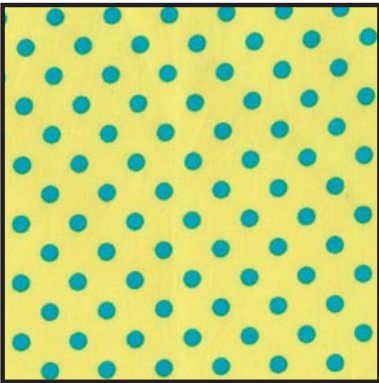
**SC5333 Gray  
Cotton Couture  
3/8 yard**



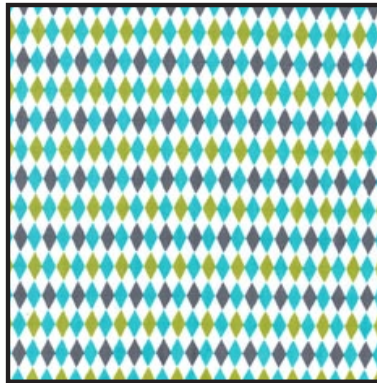
**CX4253 Lagoon  
Hoopla Dot  
1/6 yard**



**CX3584 Limeade  
Clown Stripe  
1/6 yard**



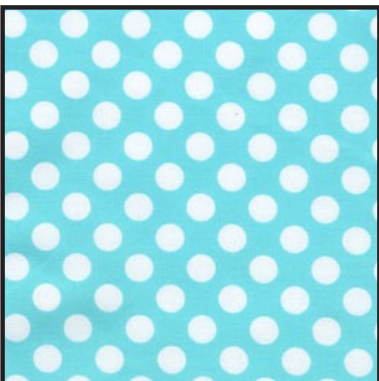
**CX2490 Caribe  
Dumb Dot  
1/4 yard**



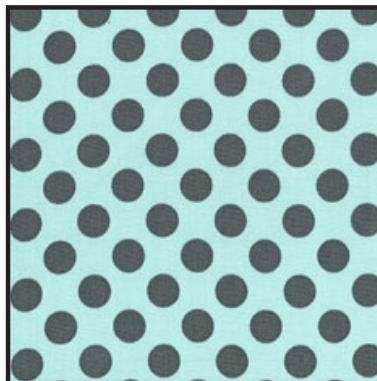
**CX4831 Lagoon  
Mini Harlequin  
1/4 yard**



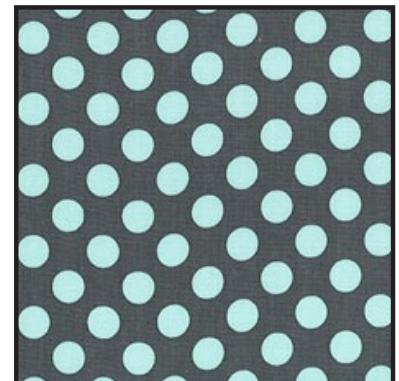
**CX3137 Lagoon  
Play Stripe  
1/4 yard**



**CX1492 Ocean  
Ta Dot  
1/4 yard**



**CX1492 Luna  
Ta Dot  
1/4 yard**



**CX1492 Marine  
Ta Dot  
1/4 yard**

**Backing & Batting: 45" x60"**

**"Ruth Ann Bargello"**  
Quilt by Marinda Stewart

Size: Approximately 42" W x 56" H    Skill Level : Confident Beginner / /Intermediate

**Materials**

<b>Fabric</b>	<b>Yardage</b>	<b>Cutting</b>
<b>CX5244 Gray Ruth Ann</b>	1 5/8 yards	(1) 3 1/2" x 56 1/2" * (2) 3 1/2" x 25 1/2" * (3) 3 1/2" x 25 1/2" (5) Flowers
<b>CX5452 Ivory Atomic Dot</b>	1/2 yard	(4) 4 1/2" x 25 1/2"
<b>CX4842 Gray Dot 'N' Square</b>	5/8 yard	(3) 1 1/2" x W.O.F. (3) 2 1/2" x W.O.F. (2) 3 1/2" x W.O.F.
<b>SC5333 Gray Cotton Couture</b>	3/8 yard	(5) 2 1/2" x W.O.F. - binding
<b>CX4253 Lagoon Hoopla Dot</b>	1/6 yard	(3) 1 1/2" x 25 1/2"
<b>CX3584 Limeade Clown Stripe</b>	1/6 yard	(2) 2 1/2" x 25 1/2"
<b>CX2490 Caribe Dumb Dot</b>	1/2 yard	(1) 1 1/2" x 25 1/2" (2) 2 1/2" x 25 1/2"
<b>CX4831 Lagoon Mini Harlequin</b>	1/2 yard	(2) 2 1/2" x 25 1/2"
<b>CX3137 Lagoon Play Stripe</b>	1/2 yard	(2) 1 1/2" x 25 1/2"
<b>CX1492 Ocean Ta Dot</b>	1/2 yard	(2) 2 1/2" x W.O.F.
<b>CX1492 Luna Ta Dot</b>	1/2 yard	(1) 1 1/2" x 25 1/2" (2) 2 1/2" x W.O.F.
<b>CX1492 Marine Ta Dot</b>	1/2 yard	(2) 1 1/2" x 25 1/2" (2) 2 1/2" x W.O.F.
<p align="center"><b>Also Needed:</b> 45" x 60" backing, 45" x 60" batting, threads to match, scissors, straight pins, rotary cutter, acrylic ruler, mat, and fusible web.</p>		
<p>* Border print – several pieces cut lengthwise on fabric. Center strip on motif.</p>		

## Disclaimers

This pattern is provided as a courtesy to quilt stores, catalogs, and quilters. Michael Miller Fabrics, LLC is not responsible for the accuracy of any kits packaged to accompany this pattern. Please direct any inquiries to the kit maker.

Yardage requirements for this pattern may allow for excess yardage to accommodate specific placement of motifs or to allow for any fussy-cutting to achieve the finished quilt design.

While every attempt has been made to give accurate measurements, yardage requirements, and construction directions; this does not allow personal variations in measuring, cutting, and or sewing. The enclosed directions were used in the construction of the original quilt.

## Directions

1. Sew together one each 2 ½" strip of CX1492 Marine, CX3137, and CX1492 Luna to make one 6 ½' wide pieced strip. Make two. From the pieced strips cut (12) 1 ½" x 6 ½", (10) 1 ½" x 6 ½", and (8) 3 ½" x 6 ½".
2. To contrast the bargello, CX4842 will be added to one or both ends of a pieced strip to make a 14 ½" length. Refer to the placement guide for width and cutting sizes for each strip. Start at one end and work to the other. As each 14 ½" piece is completed sew it to the preceding strip to maintain the pattern. Completed bargello strip will measure 14 ½" x 56 ½". Match the CX4842 width of strips to the precut pieced strip widths.
3. Sew CX5244 3 ½" x 56 ½" with the border to the left side of the bargello section.
4. For the striped section of the quilt start at the top with CX4831 2 ½" x 25 ½". Add CX4253 1 ½" x 25 ½". Following the placement guide add each designated fabric to the preceding one to make a piece 25 ½" x 56 ½".
5. Following manufacturer's directions, iron (5) rough cut CX5244 flowers to the fusible web. Cut out each. Remove paper backing. Fuse to the 25 ½" x 56 ½" pieced section as shown or as desired. Machine appliqué raw edges to finish.
6. Sew striped section to the left side of the quilt.
7. Layer backing, batting, and quilt top. Baste.
8. Quilt as desired.
9. Bind quilt using SC5333 2 ½" strips pieced as needed for length.

# Placement Guide

## "Ruth Ann Borgeglio"

