

PRINCESS



Size: 42" x 56"

Quilt designed by Marinda Stewart
Level: Beginner



118 West 22nd Street 5th Floor New York, NY 10011
Tel: 212.704.0774 Fax: 212. 633. 0272 email: info@michaelmillerfabrics.com

www.michaelmillerfabrics.com

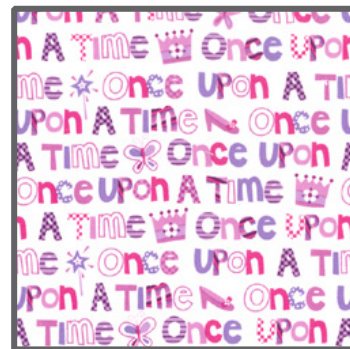
FABRIC REQUIREMENTS



**CX5468 Pink
Princess Castles
1 5/8 yards**



**CX5465 Pink
Crown Jewels
3/8 yard**



**CX5467 Pink
Once Upon a Time
1/4 yard**



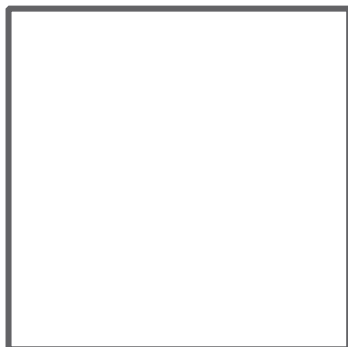
**SC5333 Purple
Cotton Couture
1/2 yard**



**CX2490 Peony
Dumb Dot
5/8 yard**



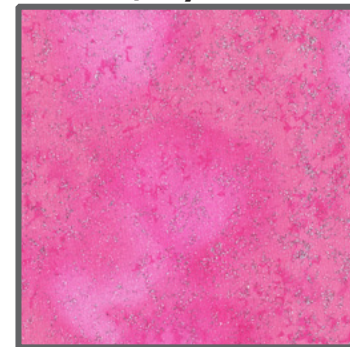
**CX2490 Orchid
Dumb Dot
3/8 yard**



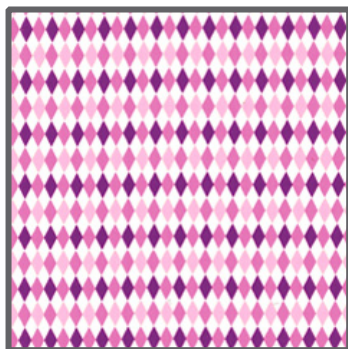
**SC5333 Bright White
Cotton Couture
1/4 yard**



**SC5333 Berry
Cotton Couture
1/8 yard**



**CM0376 Petal
Fairy Frost
Fat 1/4**



**CX4831 Princess
Mini Harlequin
1 Pc (4" x 10")**



**Optional : CX5468 Pink
Princess Castles
1 3/4 yard backing**

Batting 46" x 60" (and backing if not using CX5468)

"Princess"

Quilt by Marinda Stewart

Size: Approximately 42" w x 56" h Skill Level : Beginner

Materials

Fabric	Yardage	Cutting
* CX5468 Pink Princess Castles	1 5/8 yards	(2) 5 1/2" h x 30 1/2" w (2) 5 1/2" w x 44 1/2" h
CX5465 Pink Crown Jewels	3/8 yard	(2) 5 1/2" x 30 1/2"
CX5467 Pink Once Upon a Time	1/4 yard	(2) 1 1/2" x 21 1/2" (2) 1 1/2" x 25 1/2" **
SC5333 Purple Cotton Couture	1/2 yard	(5) 2 1/2" x W.O.F. - binding (2) 1" x 23 1/2" (2) 1" x 32 1/2" (4) 1" x 3 1/2" (4) large hearts, assorted crown pieces (see patterns)
CX2490 Peony Dumb Dot	5/8 yard	(1) 20 1/2" x 22 1/2" (4) 3 1/2" squares (4) 5 1/2" squares
CX2490 Orchid Dumb Dot	3/8 yard	(4) 1 1/2" x 30 1/2" (4) 1 1/2" x 5 1/2" (2) 1 1/2" x 56 1/2" (pieced for length)
SC5333 Bright White Cotton Couture	1/4 yard	(2) 3 1/2" x 23 1/2" (2) 3 1/2" x 25 1/2"
SC5333 Berry Cotton Couture	1/8 yard	(2) 1" x 20 1/2" (2) 1" x 23 1/2" (4) circles (see pattern)
CM0376 Petal Fairy Frost	Fat 1/4	(1) crown (4) stars (see pattern)
CX4831 Princess Mini Harlequin	1 Pc (4" x 10")	(1) crown (see pattern)
Optional : CX5468 Pink Princess Castles	1 3/4 yard backing	

* One way print. Cut (2) pieces vertically and (2) pieces horizontally

** Fussy cut - center each piece on motif

Also Needed:

46" x 60" batting (and backing if not using CX5468),
threads to match, scissors, straight pins, acrylic ruler, rotary cutter, fusible web, and mat.
OPTIONAL : Iron-on tear-away stabilizer for applique areas.

Disclaimers

This pattern is provided as a courtesy to quilt stores, catalogs, and quilters. Michael Miller Fabrics, LLC is not responsible for the accuracy of any kits packaged to accompany this pattern. Please direct any inquiries to the kit maker.

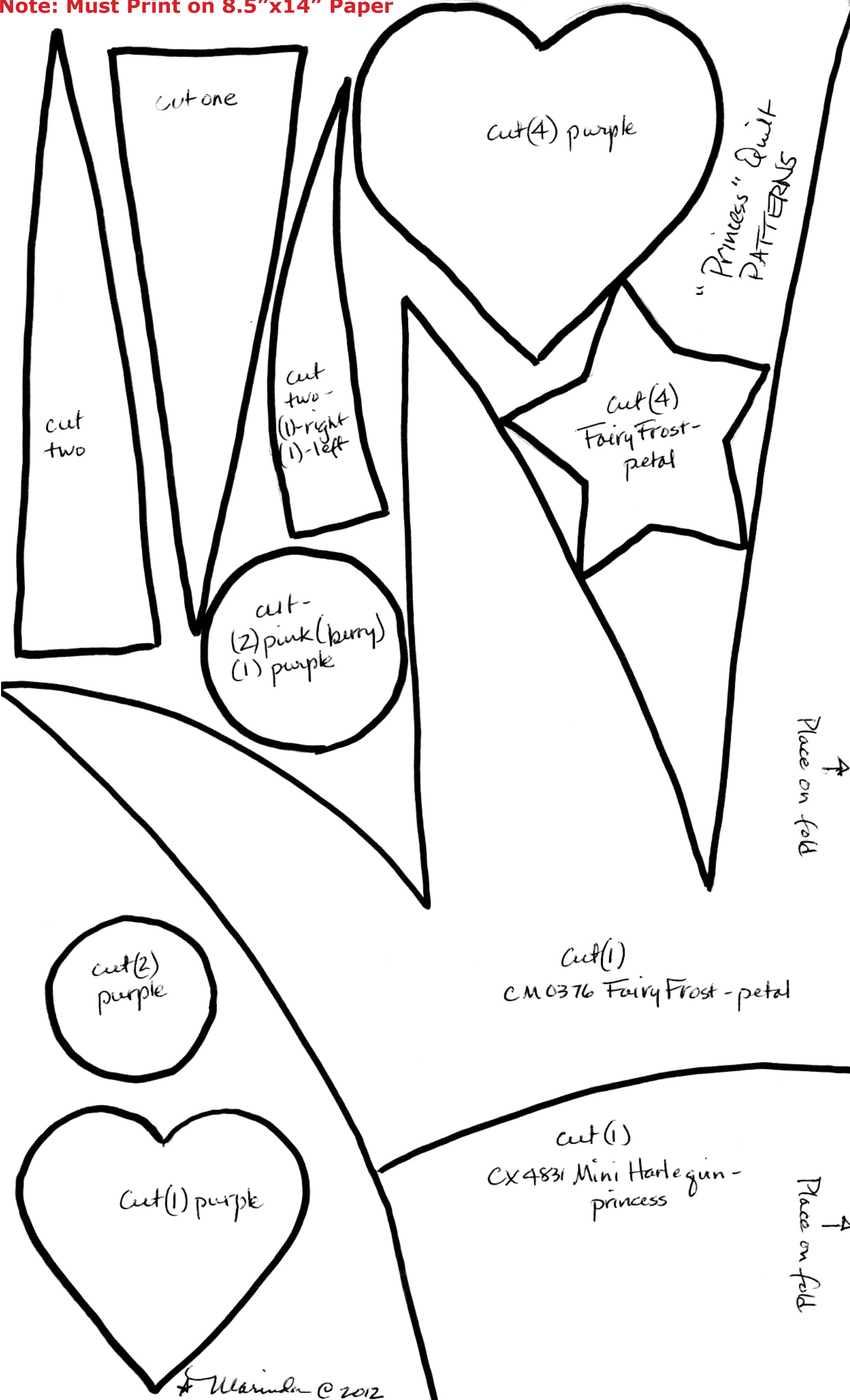
Yardage requirements for this pattern may allow for excess yardage to accommodate specific placement of motifs or to allow for any fussy-cutting to achieve the finished quilt design.

While every attempt has been made to give accurate measurements, yardage requirements, and construction directions; this does not allow personal variations in measuring, cutting, and or sewing. The enclosed directions were used in the construction of the original quilt.

Directions

1. Following manufacturer's directions, trace pattern pieces on the paper side of the fusible web. Cut out each piece leaving a small margin. Iron the pattern pieces on the wrong side of each designated fabric. Cut out all pieces on the pattern lines. Arrange the crown pieces as shown on CX2490 Peony 20 1/2" x 22 1/2" piece. Refer to the photo for placement. Remove paper backing. Fuse in place. Machine satin stitch over all raw edges to finish using matching threads.
Optional but recommended: Following manufacturer's directions use iron-on tear-away stabilizer on the wrong side of the applique area before stitching. It makes the applique process easier and more polished. Repeat the process using the four stars and CX2490 Peony 3 1/2" squares and the four hearts and CX2490 Peony 5 1/2" squares. Set the squares aside. Remove all the stabilizer after stitching.
2. Sew one SC5333 Berry 1" x 20 1/2" piece to the top and bottom of the appliqued quilt center. Sew one SC5333 Berry 1" x 23 1/2" piece to each side.
3. Sew one CX5467 1 1/2" x 21 1/2" piece to the top and bottom of the quilt. Sew one CX5467 1 1/2" x 25 1/2" piece to each side.
4. Sew one SC5333 Purple 1 1/2" x 23 1/2" piece to the top and bottom of the quilt.
5. Sew one SC5333 Bright White 3 1/2" x 23 1/2" piece to the top and bottom of the quilt.
6. Sew one SC5333 Purple 1" x 32 1/2" piece to each side of the quilt.
7. Sew one SC5333 Purple 1" x 3 1/2" piece to each end of two SC5333 Bright White 3 1/2" x 25 1/2" pieces.
8. Sew one 3 1/2" star block to each end of each SC5333 3 1/2" strip. Sew one completed strip to each side of the quilt.
9. Sew one CX2490 Orchid 1 1/2" x 30 1/2" piece to the top and bottom of the quilt.
10. Sew one CX5465 5 1/2" x 30 1/2" piece to the top and bottom of the quilt.
11. Repeat step #9.
12. Sew one CX5468 5 1/2" h x 30 1/2" w (horizontal) piece to the top and bottom of the quilt. Keep motifs upright.
13. Sew one CX2490 Orchid 1 1/2" x 56 1/2" (pieced for length) piece to each side of the quilt.
14. Sew one CX2490 Orchid 1 1/2" x 5 1/2" piece to the top and bottom of the CX5468 5 1/2" w x 44 1/2" h (vertical) pieces. Sew one 5 1/2" heart square to the top and bottom of each strip. Keep the motifs upright. Sew one strip to each side of the quilt.
15. Layer backing, batting, and quilt top. Baste.
16. Quilt as desired.
17. Bind quilt using SC5333 Purple 2 1/2" strips pieced as needed for length.

Note: Must Print on 8.5"x14" Paper



"Princess" Quilt
PATTERNS

cut(4) purple

cut(4)
Fairy Frost-
petal

cut-
(2) pink (berry)
(1) purple

cut
two

cut one

cut
two-
(1)-right
(1)-left

cut(2)
purple

cut(1) purple

cut(1)
CM 0376 Fairy Frost - petal

cut(1)
CX 4831 Mini Harlequin -
princess

Place on fold

Place on fold