

Night Flower Fairies



Size: Approximately 41" W x 55" H

Quilt designed by Marinda Stewart

Skill Level: Beginner



118 West 22nd Street 5th Floor New York, NY 10011

Tel: 212.704.0774 Fax: 212. 633. 0272 email: info@michaelmillerfabrics.com

www.michaelmillerfabrics.com

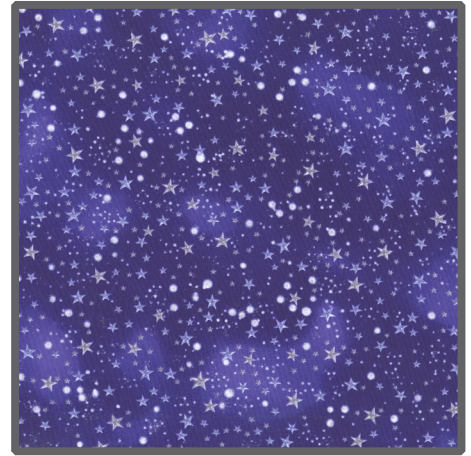
FABRIC REQUIREMENTS



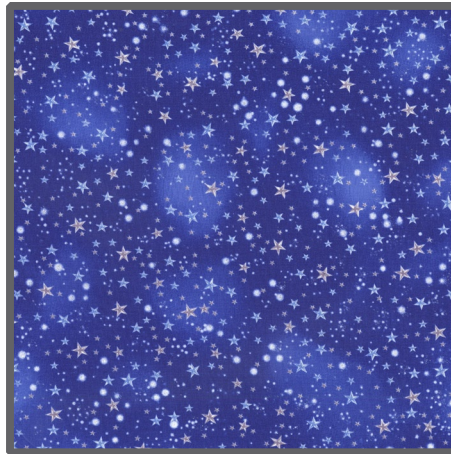
**DC5044 Nite
Night Fairies Panel
2/3 yard**



**DM5048 Nite
Night Fairies Border
3/8 yard**



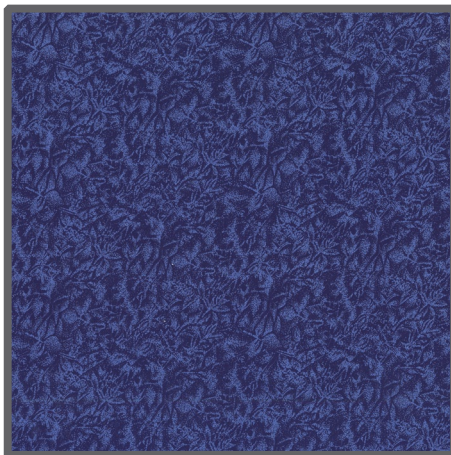
**DM5049 Purple
Night Sky
3/8 yard**



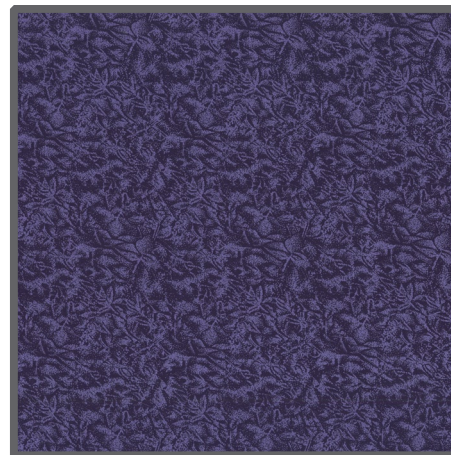
**DM5049 Nite
Night Sky
3/8 yard**



**CM0376 Asparagus
Fairy Frost
1/8 yard**



**CM0376 Indigo
Fairy Frost
1/8 yard**



**CM0376 Blackberry
Fairy Frost
1/2 yard**

Also needed: 45" x 60" backing and 45" x 60" batting

"Night Flower Fairies"

Quilt by Marinda Stewart

Size: Approximately 41" W x 55" H Skill Level : Beginner

Materials

Fabric	Yardage	Cutting
DC5044 Nite Night Fairies Panel	2/3 yard	(1) Panel 23 1/2" W x 43 1/4" H
DM5048 Nite Night Fairies Border	3/8 yard	(2) 9 1/2" W x 21 1/4" Border
DM5049 Purple Night Sky	3/8 yard	(6) 3 1/2" x 14 1/2" (1) 2 1/2" x 35 1/2"
DM5049 Nite Night Sky	3/8 yard	(2) 3 1/2" x 11 1/2" (2) 3 1/2" x 13 1/2" (2) 3 1/2" x 15 1/2" (1) 2 1/2" x 29 1/2"
CM0376 Asparagus Fairy Frost	1/8 yard	(1) 3 1/2" x 23 1/2"
CM0376 Indigo Fairy Frost	1/8 yard	(1) 2 1/2" x 41 1/2"
CM0376 Blackberry Fairy Frost	1/2 yard	(1) 3 1/2" x 41 1/2" (5) 2 1/2" x W.O.F.
<p>Also Needed: 45" x 60" backing, 45" x 60" batting, threads to match, scissors, straight pins, acrylic ruler, rotary cutter, and mat.</p>		

Disclaimers

This pattern is provided as a courtesy to quilt stores, catalogs, and quilters. Michael Miller Fabrics, LLC is not responsible for the accuracy of any kits packaged to accompany this pattern. Please direct any inquiries to the kit maker.

Yardage requirements for this pattern may allow for excess yardage to accommodate specific placement of motifs or to allow for any fussy-cutting to achieve the finished quilt design.

While every attempt has been made to give accurate measurements, yardage requirements, and construction directions; this does not allow personal variations in measuring, cutting, and or sewing. The enclosed directions were used in the construction of the original quilt.

Directions

1. Sew CM0376 Asparagus 3 1/2" x 23 1/2" to the bottom of the panel. Set aside.
2. Sew together one DM5049 (Purple) 3 1/2" x 14 1/2" to one DM5049 (Nite) 3 1/2" x 11 1/2" piece along 3 1/2" edge. Make two. Repeat using DM5049 (Purple) 3 1/2" x 14 1/2" and DM5049 (Nite) 3 1/2" x 13 1/2" and DM5049 (Purple) 3 1/2" x 14 1/2" and DM5049 (Nite) 3 1/2" x 15 1/2"
3. Using one of each length of the 3 1/2" strips, align the raw edges of the blue ends. Sew the strips together longest to the shortest. Make two sets of three. Sew one set to the top of each DM5048 panel as shown.
4. Sew the short edge of each pieced strip to each side of the large panel.
5. Sew the DM5049 (Nite) 2 1/2" x 29 1/2" strip to the top of the quilt. Pivot at each end and sew the side edges to the quilt.
6. Sew the DM5049 (Purple) 2 1/2" x 35 1/2" strip to the top of the quilt. Pivot at each end and sew the side edges to the quilt.
7. Sew the CM0376 Indigo 2 1/2" x 41 1/2" piece to the bottom of the quilt.
8. Sew the CM0376 Blackberry 3 1/2" x 41 1/2" piece to the bottom of the quilt.
9. Layer backing, batting, and quilt top. Baste.
10. Quilt as desired.
11. Bind quilt with CM0376 Blackberry 2 1/2" strips, pieced as needed for length.