

NEVERMORE



Quilt designed by Marinda Stewart

Size: 42" W x 48" H

Level: Confident Beginner



118 West 22nd Street 5th Fl. New York, NY 10011 Tel: 212.704.0774 Fax: 212. 633. 0272
 email: info@michaelmillerfabrics.com www.michaelmillerfabrics.com

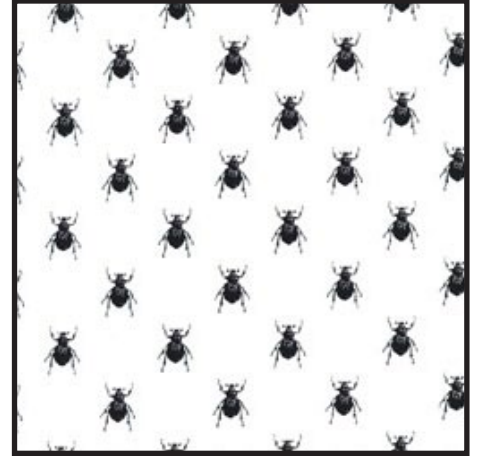
FABRIC REQUIREMENTS



**DC5525 White
Edgar
1 yard**



**DC5522 Black
Nevermore Collage
1 yard**



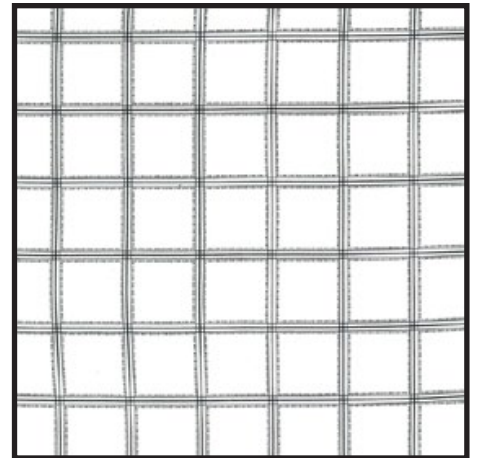
**DC5524 White
Goth Bugs
1 1/2 yards**



**DC5524 Black
Goth Bugs
1/2 yard**



**DC5523 White
Jackdaws
Fat 1/8**



**CX5224 Black
Delicate Dot Plaid
1/2 yard**



**CX1065 Black
Garden Pindot
1/2 yard**

Backing & Batting 46" x 52"

"Nevermore"

Quilt by Marinda Stewart

Size: Approximately 42" x 48" Skill Level : Confident Beginner

Materials

Fabric	Yardage	Cutting
* DC5525 White Edgar	1 yard	Fussy cut (6) 6 1/2" squares Fussy cut (15) 3 1/2" squares
* DC5522 Black Nevermore Collage	1 yard	Fussy cut (4) 6 1/2" squares Fussy cut (21) 3 1/2" squares Fussy cut (3) 2 1/2" H x 6 1/2" W **
* DC5524 White Goth Bugs	1 1/2 yards	(2) 4" h x 42 1/2" w – cut horizontally (2) 4" w x 42 1/2" h – cut vertically
* DC5524 Black Goth Bugs	1/2 yard	(25) 1 1/2" x 6 1/2" – cut vertically (5) 1 1/2" x 29 1/2" – cut horizontally
* DC5523 White Jackdaws	Fat 1/8	Fussy cut (4) 3" w x 5 1/2" birdcage
CX5224 Black Delicate Dot Plaid	1/2 yard	(2) 3" x 29 1/2" (2) 3" x 31 1/2"
CX1065 Black Garden Pindot	1/2 yard	(2) 1" x 35 1/2" (2) 1" x 41 1/2" (5) 2 1/2" x W.O.F. – binding
Also Needed: 46" x 52" backing, 46" x 52" batting, thread to match, scissors, straight pins, rotary cutter, acrylic ruler, and mat. NOTE: All of the motifs in the blocks have been fussy cut. Each is centered on a motif or portion of one motif for cutting. The exact images used are up to the maker.		
* One way print. Center on motifs. Cut pieces out with images upright. ** Center each piece on one word: "Spells", "Potions", "Nevermore".		

Disclaimers

This pattern is provided as a courtesy to quilt stores, catalogs, and quilters. Michael Miller Fabrics, LLC is not responsible for the accuracy of any kits packaged to accompany this pattern. Please direct any inquiries to the kit maker.

Yardage requirements for this pattern may allow for excess yardage to accommodate specific placement of motifs or to allow for any fussy-cutting to achieve the finished quilt design.

While every attempt has been made to give accurate measurements, yardage requirements, and construction directions; this does not allow personal variations in measuring, cutting, and or sewing. The enclosed directions were used in the construction of the original quilt.

Directions

1. Sew together (4) 3 ½" squares in a 4-patch checkerboard using DC5525 and DC5522 3 ½" squares. Make (9) blocks. Sew together (3) DC5522 2 ½" x 6 ½" strips to make (1) 6 ½" square.
2. Row #1 Begin and end with a DC5524 Black 1 ½" x 6 ½" and alternate with 6 ½" squares, DC5522, DC5525, one 4-patch square, and DC5525.
3. Row #2 Maintaining the established pattern with DC5524 Black 1 ½" x 6 ½" sashing strips. Sew together (1) DC5525, DC5522, and (2) 4-patch blocks.
4. Row #3 Repeat step #2 using (2) 4-patch blocks, (1) DC5525, and DC5522.
5. Row #4 Repeat step #2 using (1) 4-patch, DC5525, (1) 4-patch, and the (1) 6 ½" block with (3) 2 ½" x 6 ½" word strips.
6. Row #5 Repeat step #3 using (1) DC5522, (2) 4-patch blocks, and (1) DC5525.
7. Beginning and ending with DC5524 1 ½" x 29 ½" strips, sew the rows together in sequence alternating with the DC5524 strips.
8. Sew one CX5224 3" x 29 ½" strip to the top and bottom of the quilt. Sew one 3" x 5 ½" DC5523 birdcage piece to the top and bottom of the two remaining CX5224 3" x 31 ½" pieces. Keep motifs upright. Sew one strip to each side of the quilt.
9. Sew one CX1065 1" x 41 ½" piece to each side of the quilt. Sew one CX1065 1" x 35 ½" piece to the top and bottom of the quilt.
10. Sew one DC5524 White 4" w x 42 ½" h piece to each side of the quilt. Keep motifs upright. Sew one DC5524 White 4" h x 42 ½" w piece to the top and bottom.
11. Layer backing, batting, and quilt top. Baste.
12. Quilt as desired.
13. Bind quilt using CX1065 2 ½" strips pieced as needed for length.