

MIRROR BALL DOT CHEVRON

Date: Mar.06.11



Size: 40" x 60"

Quilt designed by Marinda Stewart
Level: Confident Beginner



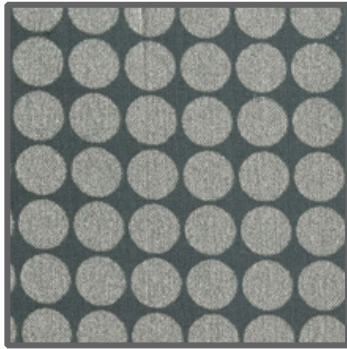
118 West 22nd Street 5th Floor New York, NY 10011
Tel: 212.704.0774 Fax: 212. 633. 0272 email: info@michaelmillerfabrics.com

www.michaelmillerfabrics.com

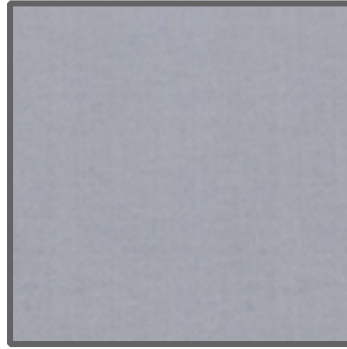
FABRIC REQUIREMENTS



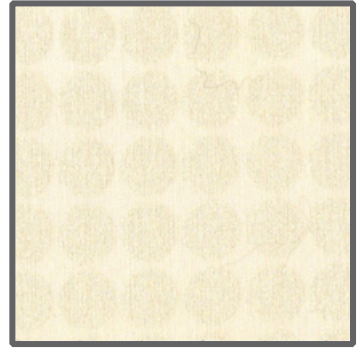
**CM0376 Snow
Fairy Frost
Fat 1/4**



**DM2999 Silver
Mirror Ball Dot
3/8 yard**



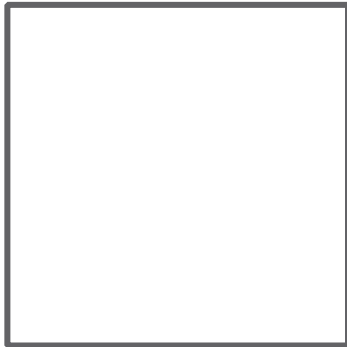
**SC5333 Fog
Cotton Couture
3/8 yard**



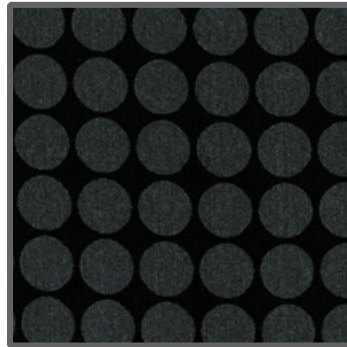
**DM2999 Rice
Mirror Ball Dot
3/8 yard**



**SC5333 Gray
Cotton Couture
3/8 yard**



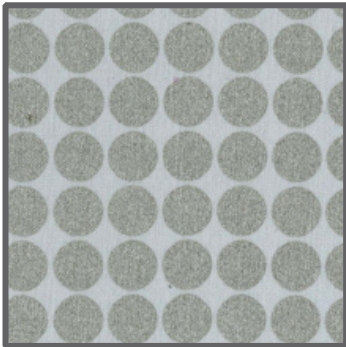
**SC5333 Bright White
Cotton Couture
3/8 yard**



**DM2999 Onyx
Mirror Ball Dot
3/8 yard**



**SC5333 Cream
Cotton Couture
3/8 yard**



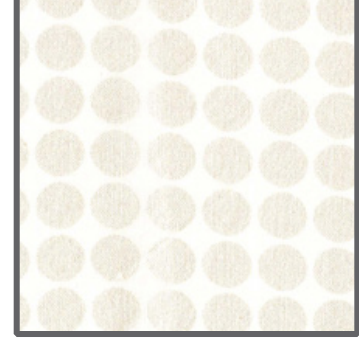
**DM2999 Platinum
Mirror Ball Dot
3/8 yard**



**CM0376 Champagne
Fairy Frost
3/8 yard**



**SC5333 Stone
Cotton Couture
3/4 yard**



**DM2999 Snow
Mirror Ball Dot
3/8 yard**



**CM0376 Silver
Fairy Frost
Fat 1/4**

Backing & Batting 45" x 65"

"Mirror Ball Dot Chevron"

Quilt by Marinda Stewart

Size: Approximately 40" x 60" Skill Level : Confident Beginner

Materials

Fabric	Yardage	Cutting
CM0376 Snow Fairy Frost	Fat 1/4	(4) 6" squares
DM2999 Silver Mirror Ball Dot	3/8 yard	(8) 6" squares
SC5333 Fog Cotton Couture	3/8 yard	(8) 6" squares
DM2999 Rice Mirror Ball Dot	3/8 yard	(8) 6" squares
SC5333 Gray Cotton Couture	3/8 yard	(8) 6" squares
SC5333 Bright White Cotton Couture	3/8 yard	(8) 6" squares
DM2999 Onyx Mirror Ball Dot	3/8 yard	(8) 6" squares
SC5333 Cream Cotton Couture	3/8 yard	(8) 6" squares
DM2999 Platinum Mirror Ball Dot	3/8 yard	(8) 6" squares
CM0376 Champagne Fairy Frost	3/8 yard	(8) 6" squares
SC5333 Stone Cotton Couture	3/4 yard	(8) 6" squares (6) 2 1/2" x W.O.F. - Binding
DM2999 Snow Mirror Ball Dot	3/8 yard	(8) 6" squares
CM0376 Silver Fairy Frost	Fat 1/4	(4) 6" squares

Also Needed:

45" x 65" backing, 45" x 65" batting, threads to match, scissors, straight pins, acrylic ruler, rotary cutter, and mat.

Disclaimers

This pattern is provided as a courtesy to quilt stores, catalogs, and quilters. Michael Miller Fabrics, LLC is not responsible for the accuracy of any kits packaged to accompany this pattern. Please direct any inquiries to the kit maker.

Yardage requirements for this pattern may allow for excess yardage to accommodate specific placement of motifs or to allow for any fussy-cutting to achieve the finished quilt design.

While every attempt has been made to give accurate measurements, yardage requirements, and construction directions; this does not allow personal variations in measuring, cutting, and or sewing. The enclosed directions were used in the construction of the original quilt.

Directions

1. For row #1, place one CM0376 Snow 6" square right sides together on top of one DM2999 Silver 6" square. Draw a diagonal line from one corner to the opposite corner. Sew 1/4" on each side of the diagonal line. Cut apart on the diagonal line. Press each square open. Trim each right triangle square to an accurate 5 1/2" square. Make (8) 5 1/2" squares total. Sew together as shown in an alternating pattern to make one 40 1/2" row. Set aside.
2. Row #2 - repeat step #1 using DM2999 Silver and SC5333 Fog. Sew to the bottom of Row #1 matching the DM2999 Silver edges as shown.
3. Row #3 - repeat step #1 using SC5333 Fog and DM2999 Rice. Sew to the bottom of row #2 as shown maintaining the pattern.
4. Row #4 - repeat step #1 using DM2999 Rice and SC5333 Gray. Sew to the bottom of the quilt.
5. Row #5 - repeat step #1 using SC5333 Gray and SC5333 Bright White. Add to the quilt as shown.
6. Row #6 - use SC5333 Bright White and DM2999 Onyx in the established pattern.
7. Row #7 - use DM2999 Onyx and SC5333 Cream.
8. Row #8 - use SC5333 Cream and DM2999 Platinum.
9. Row #9 - use DM2999 Platinum and CM0376 Champagne.
10. Row #10 - use CM0376 Champagne and SC5333 Stone.
11. Row #11 - use SC5333 Stone and DM2999 Snow.
12. Row #12 - use DM2999 Snow and CM0376 Silver. Quilt top should be 40 1/2" w x 60 1/2" h.
13. Layer backing, batting, and quilt top. Baste.
14. Quilt as desired.
15. Bind quilt using SC5333 Stone 2 1/2" strips pieced as needed for length.