

Little Houses All in a Row



Size: 40" W x 58 H"

Level: Confident Beginner

Quilt designed by Marinda Stewart

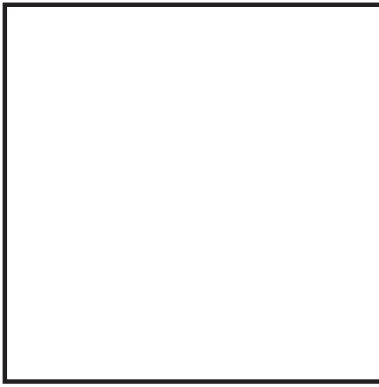


118 West 22nd Street 5th FL. New York, NY 10011 Tel: 212.704.0774 Fax: 212. 633. 0272

email: info@michaelmillerfabrics.com

www.michaelmillerfabrics.com

FABRIC REQUIREMENTS



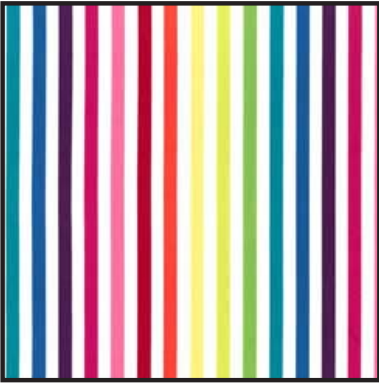
**SC5333 Bright White
Cotton Couture
1 1/2 yard**



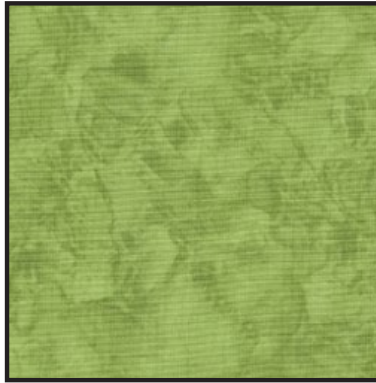
**PC5709 Lagoon
Chic Chevron
1/2 yard**



**PC5709 Sun
Chic Chevron
1/2 yard**



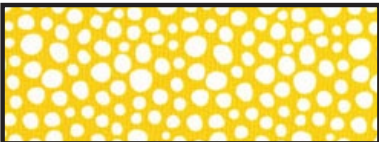
**PC5708 Rainbow
Stripe Couture
1/2 yard**



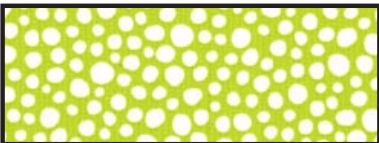
**K1053 (Green)
Krystal
1/2 yard**



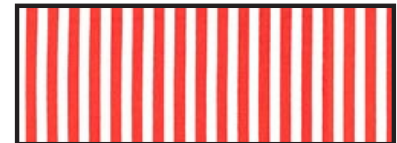
**K2211 (Brown)
Krystal
1/6 yard**



**DC5718 Little Spots
Yellow
Kryptonite
Sunset
Luna
Red
7" x 14" piece per color**



**CX5514 Pinhead
Sherbert
Blossom
Kiwi
Creamsicle
Limeade
8" x 14" piece per color**



**CX3584 Clown Stripe
Red
Fire
Limeade
White
Olive
6" x 7" piece per color**

Backing & Batting: 44" x 62"

"Little Houses All in a Row"

Quilt by Marinda Stewart

Size: Approximately 40" W x 58" H Skill Level : Confident Beginner

Materials

| Fabric | Yardage | Cutting |
|--|-----------------------------|--|
| SC5333 Bright White Cotton Couture | 1 ½ yards | (5) 8 ½" squares (40) 1 ½" x 4 ½" (40) 1 ½" x 8 ½" (40) 3 ½" square (20) 1 ½" x 6 ½" |
| PC5709 Lagoon Chic Chevron | 1/2 yard | Fussy cut (2) 2 ¾" x 40 ½" * (1) 4 ¾" x 40 ½" * |
| PC5709 Sun Chic Chevron | 1/2 yard | Fussy cut (2) 2 ¾" x 40 ½" * (1) 4 ¾" x 40 ½" * |
| PC5708 Rainbow Stripe Couture | 1/2 yard | 2 ½" bias strips pieced to make 4 yards (144") |
| K1053 (Green) Krystal | 1/6 yard | (5) treetops (see pattern) |
| K2211 (Brown) Krystal | 4" x15" piece | (5) tree trunks (see pattern) |
| DC5718 Little Spots Yellow Kryptonite Sunset Luna Red | 7" x 14" piece per color | (4) 2" x 2 ½" each color (8) 1 ½" x 4 ½" each color |
| CX5514 Pinhead Sherbert Blossom Kiwi Creamsicle Limeade | 8" x 14" piece per color | (4) 3 ½" x 6 ½" each color |
| CX3584 Clown Stripe Red Fire Limeade White Olive | 6" x 7" | (4) 2 ½" x 3 ½" each color |
| Also Needed: 44" x 62" backing, 44" x 62" batting, fusible web, threads to match, scissors, straight pins, acrylic ruler, rotary cutter, and mat. | | |
| * Center on complete row/rows plus ¼" seam allowance each side. | | |

Disclaimers

This pattern is provided as a courtesy to quilt stores, catalogs, and quilters. Michael Miller Fabrics, LLC is not responsible for the accuracy of any kits packaged to accompany this pattern. Please direct any inquiries to the kit maker.

Yardage requirements for this pattern may allow for excess yardage to accommodate specific placement of motifs or to allow for any fussy-cutting to achieve the finished quilt design.

While every attempt has been made to give accurate measurements, yardage requirements, and construction directions; this does not allow personal variations in measuring, cutting, and or sewing. The enclosed directions were used in the construction of the original quilt.

Directions

1. For one 8 ½" house block – sew one DC5718 2" x 2 ½" piece to the top of one CX3584 2 ½" x 3" piece. Sew one DC5718 1 ½" x 4 ½" to each side. Sew one SC5333 1 ½" x 4 ½" to each side. For the roof – place one SC5333 3 ½" square right sides together on CX5514 3 ½" x 6 ½" piece. Sew diagonally from the lower left corner to the upper right corner. Trim excess from corner to ¼" Repeat for the right side reversing the directions to make one 3 ½" x 6 ½" flying geese unit. Sew to the top of the house unit. Sew one SC5333 1 ½" x 6 ½" to the top of the block. Sew one SC5333 1 ½" x 8 ½" piece to each side. Make (4) blocks of each color combination for a total of (20) 8 ½" blocks. Set aside.
"A" – CX5514 Sherbert, CX3584 Red, DC5718 Yellow
"B" – CX5514 Blossom, CX3584 Fire, DC5718 Kryptonite
"C" – CX5514 Kiwi, CX3584 Limeade, DC5718 Sunset
"D" – CX5514 Creamsicle, CX3584 White, DC5718 Luna
"E" – CX5514 Limeade, CX3584 Olive, DC5718 Red
2. For the tree blocks – following the manufacturer's directions trace (5) tree tops and (5) tree trunks onto the paper side of the fusible web. Rough cut out. Iron the tree tops on the wrong side of K1053. Iron the tree trunks to the wrong side of K2211. Cut out. Arrange one tree top and one tree trunk on top of one SC5333 8 ½" square. Remove paper backing. Fuse in place. Machine appliqué all raw edges to finish. Make (5) total.
3. To assemble the quilt – for Row #1 sew together one "C", "D", "E", tree, and "B". Sew one PC5709 4 ¾" x 40 ½" Sun piece to the top of Row #1. Sew one PC5709 2 ¾" x 40 ½" Sun to the bottom.
4. Row #2 – Sew together one tree, "B", "C", "E", and "A". Sew to the bottom of the quilt. Sew one PC5709 2 ¾" x 40 ½" Sun to the bottom of the row.
5. Row #3 – Sew together one "E", tree, "A", "B", and "C". Add to the quilt. Sew one PC5709 2 ¾" x 40 ½" Lagoon to the bottom.
6. Row #4 – Sew together one "A", "B", "D", "E", and tree. Sew to the bottom. Add one PC5709 2 ¾" x 40 ½" Lagoon next.
7. Row #5 – Sew together one "D", "C", tree, "A", and "E". Sew to the bottom of the quilt. Finish with one PC5709 4 ¾" x 40 ½" Lagoon strip.
8. Layer backing, batting, and quilt top. Baste.
9. Quilt as desired.
10. Bind quilt using PC5708 2 ½" wide bias strips pieced to maintain the stripe pattern Cut to length as needed.

"Little Houses all in a Row"

PATTERNS

