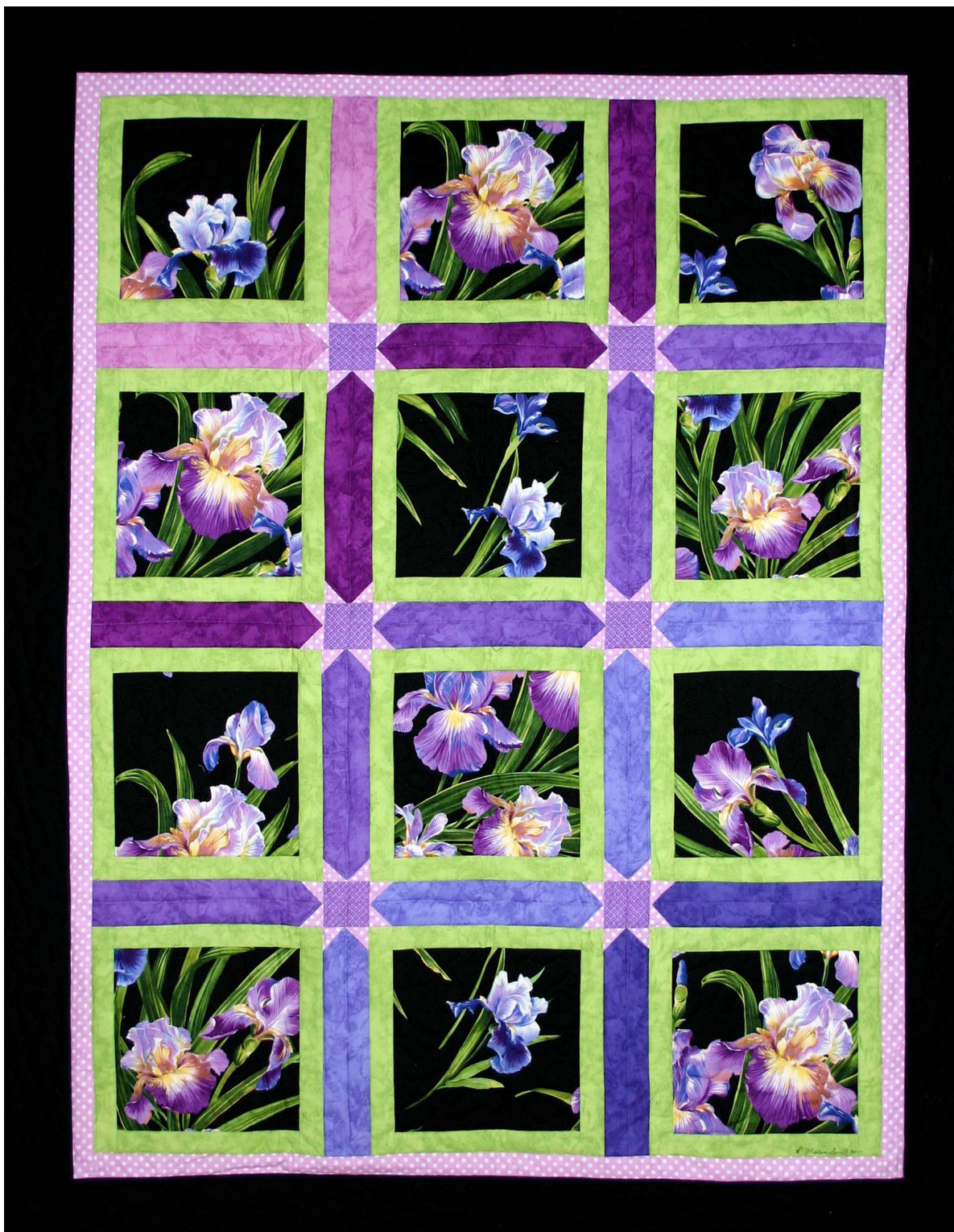


Irresistible Iris



Size: Approximately 42" W x 54" H

Quilt designed by Marinda Stewart

Skill Level: Confident Beginner



118 West 22nd Street 5th Floor New York, NY 10011

Tel: 212.704.0774 Fax: 212. 633. 0272 email: info@michaelmillerfabrics.com

www.michaelmillerfabrics.com

FABRIC REQUIREMENTS



**DC4127 Black
Primavera Iris
1 1/4 yards**



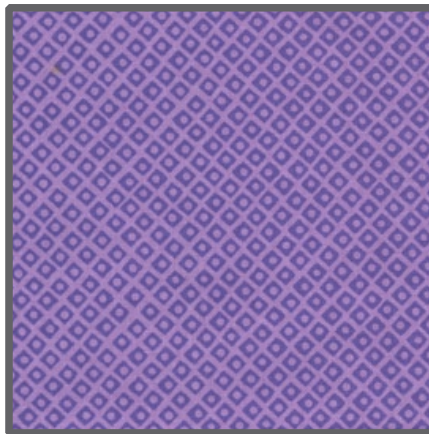
**Jet Black
1 yard**



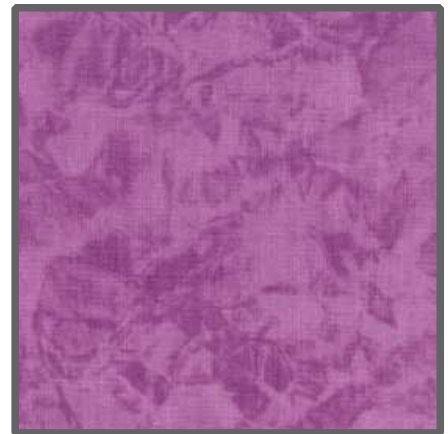
**K4058 (Chartreuse)
Krystal
1/2 yard**



**DC5153 Lilac
Dot to Dot
3/8 yard**



**CX4842 Lavender
Dot 'N' Square
Fat 1/8**



**K4173 (Azalea Pink)
Krystal
Fat 1/8**



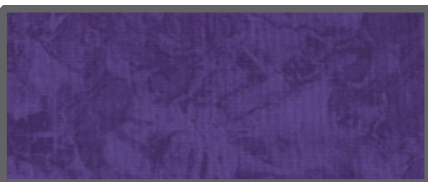
**K1274 (Magenta)
Krystal
Fat 1/8**



**K1175 (Grape)
Krystal
Fat 1/8**



**K1173 (Purple)
Krystal
Fat 1/8**



**K1275 (Dark Purple)
Krystal
Fat 1/8**

Also needed: 45" x 60" backing and 45" x 60" batting

"Irresistible Iris"

Quilt by Marinda Stewart

Size: Approximately 42" W x 54" H Skill Level : Confident Beginner

Materials

Fabric	Yardage	Cutting
DC4127 Black Primavera Iris	1 1/4 yards	(12) 8 1/2" squares - fussy cut *
Jet Black	1 yard	(2) 3 1/2" x 36 1/2" (2) 3 1/2" x 54 1/2" ** (5) 2 1/2" x W.O.F. - binding
K4058 (Chartreuse) Krystal	1/2 yard	(24) 1 1/2" x 8 1/2" (24) 1 1/2" x 10 1/2"
DC5153 Lilac Dot to Dot	3/8 yard	(48) 1 1/2" squares (2) 1 1/2" x 34 1/2" (2) 1 1/2" x 48 1/2" **
CX4842 Lavender Dot 'N' Square	Fat 1/8	(6) 2 1/2" squares
"A" K4173 (Azalea Pink) Krystal	Fat 1/8	(2) 2 1/2" x 10 1/2"
"B" K1274 (Magenta) Krystal	Fat 1/8	(4) 2 1/2" x 10 1/2"
"C" K1175 (Grape) Krystal	Fat 1/8	(5) 2 1/2" x 10 1/2"
"D" K1173 (Purple) Krystal	Fat 1/8	(4) 2 1/2" x 10 1/2"
"E" K1275 (Dark Purple) Krystal	Fat 1/8	(2) 2 1/2" x 10 1/2"

* Center on parts of the flower motifs

** Pieced for length

Also Needed:

45" x 60" backing, 45" x 60" batting, threads to match, scissors, straight pins, acrylic ruler, rotary cutter, and mat.

Disclaimers

This pattern is provided as a courtesy to quilt stores, catalogs, and quilters. Michael Miller Fabrics, LLC is not responsible for the accuracy of any kits packaged to accompany this pattern. Please direct any inquiries to the kit maker.

Yardage requirements for this pattern may allow for excess yardage to accommodate specific placement of motifs or to allow for any fussy-cutting to achieve the finished quilt design.

While every attempt has been made to give accurate measurements, yardage requirements, and construction directions; this does not allow personal variations in measuring, cutting, and or sewing. The enclosed directions were used in the construction of the original quilt.

Directions

1. Sew one K4058 8 1/2" piece to the top and bottom of one DC4127 8 1/2" square. Sew one K4058 10 1/2" piece to each side. Make (12). Set aside.
2. For the sashing - to make one strip with two star prints. Place one DC5153 1 1/2" square right sides together on top of one "A" piece. Sew diagonally across the corner. Press to the top. Trim the excess from the back. Repeat for the other side of the strip. Make two "A", two "B", two "C", two "D", and two "E". Sew two star points on each end of the remaining 10 1/2" pieces - two "B", three "C", and two "D". Set aside.
3. For Row #1 - sew (1) 10 1/2" square, (1) "A" (points at the bottom), (1) square, (1) "B" (points at the bottom).
For Row #2 - one "A" (points to the right), (1) CX4842 2 1/2" square, (1) "B" (points at both ends), (1) CX4842 square, (1) "C" (points to the left side).
For Row #3 - (1) Block, (1) "B" (points at both ends), 1 Block, (1) "C" (points at both ends), (1) block.
For Row #4 - (1) "B" (points to the right), (1) CX4842 square, (1) "C" (points at both ends), (1) CX4842 square, (1) "D" (points to the left).
For Row #5 - (1) Block, (1) "C" (points at both ends), (1) Block, (1) "D" (points at both ends), (1) Block.
For Row #6 - (1) "C" (points to the right), (1) CX4842 square, (1) "D" (points at both ends), (1) CX4842 square, (1) "E" (points to the left).
For Row #7 - (1) Block, (1) "D" (points to the top), (1) Block, (1) "E" (points to the top). Refer to the photo.
4. Sew the rows together in the order they were made to make top 34 1/2" x 46 1/2"
5. Sew one DC5153 34 1/2" piece to the top and bottom of the quilt. Sew one DC5153 48 1/2" (pieced for length) to each sides.
6. Sew one Jet Black 36 1/2" piece to the top and bottom of the quilt. Sew one Jet Black 54 1/2" (pieced for length) strip to each side of the quilt.
7. Layer backing, batting, and quilt top. Baste.
8. Quilt as desired.
9. Bind quilt with Jet Black 2 1/2" strips pieced as needed for length.