

GOING AROUND IN CIRCLES



Quilt designed by Marinda Stewart

Size: 41" Square

Level: Confident Beginner



118 West 22nd Street 5th FL. New York, NY 10011 Tel: 212.704.0774 Fax: 212. 633. 0272
email: info@michaelmillerfabrics.com www.michaelmillerfabrics.com

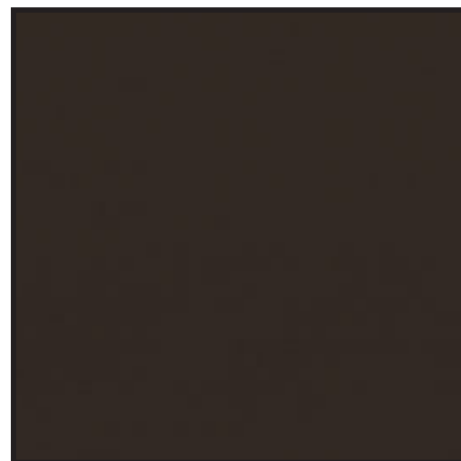
FABRIC REQUIREMENTS



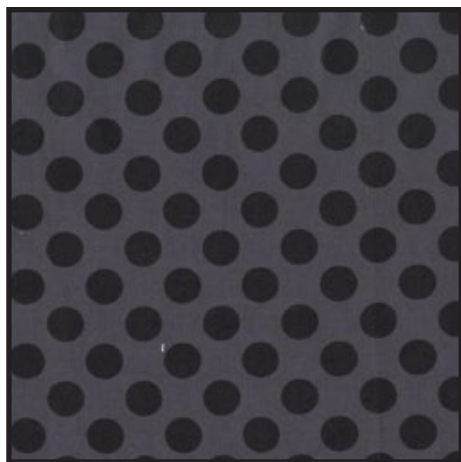
**DC5377 Graphite
Siren Song
1 yard**



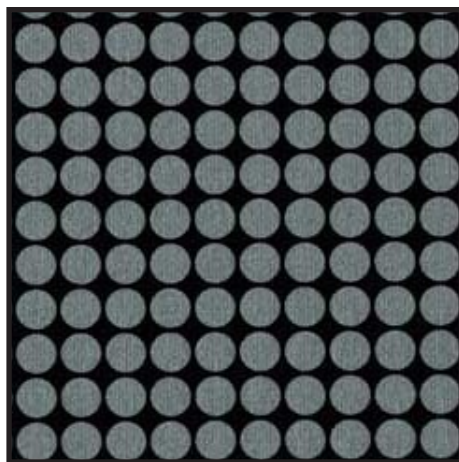
**DC5218 Lava
Gingerbread
1 yard**



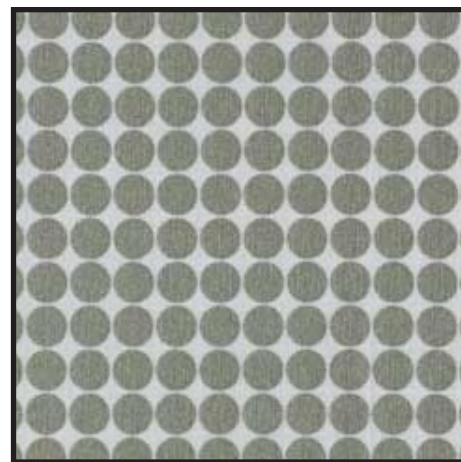
**Jet Brown
1 1/2 yards**



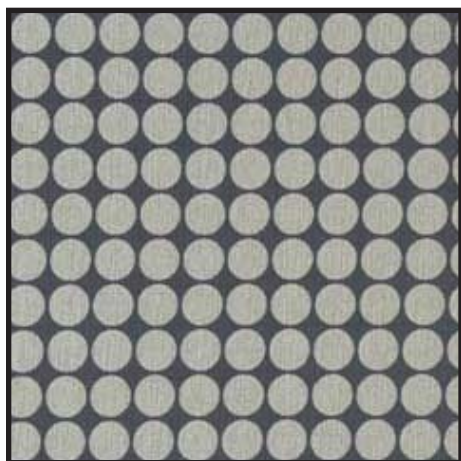
**CX1492 Ebony
Ta Dot
1/2 yard**



**DM2999 Onyx
Mirror Ball Dot
Fat 1/8**



**DM2999 Platinum
Mirror Ball Dot
1/2 yard**



**DM2999 Silver
Mirror Ball Dot
1/2 yard**

Backing 45" Square & Batting 45" Square

"Going Around in Circles"

Quilt by Marinda Stewart

Size: Approximately 41" Square Skill Level : Confident Beginner

Materials

Fabric	Yardage	Cutting
DC5377 Graphite Siren Song	1 yard	Fussy cut (6) 6 ½" squares Fussy cut (15) 3 ½" squares
DC5218 Lava Gingerbread	1 yard	Fussy cut (4) 6 ½" squares Fussy cut (21) 3 ½" squares Fussy cut (3) 2 ½" H x 6 ½" W **
Jet Brown	1 1/2 yards	(2) 4" h x 42 ½" w – cut horizontally (2) 4" w x 42 ½" h – cut vertically
CX1492 Ebony Ta Dot	1/2 yard	(25) 1 ½" x 6 ½" – cut vertically (5) 1 ½" x 29 ½" – cut horizontally
DM2999 Onyx Mirror Ball Dot	Fat 1/8	Fussy cut (4) 3" w x 5 ½" birdcage
DM2999 Platinum Mirror Ball Dot	1/2 yard	(2) 3" x 29 ½" (2) 3" x 31 ½"
DM2999 Silver Mirror Ball Dot	1/2 yard	(2) 1" x 35 ½" (2) 1" x 41 ½" (5) 2 ½" x W.O.F. – binding

Also Needed:

45" square backing, 45" square batting, thread to match, scissors, straight pins, rotary cutter, acrylic ruler, and mat.

Recommended: "Circle Savvy Ruler" by Swirly Girls for Creative Grid.

Optional: Fusible web for the circles and rings compass (instead of specialty ruler).

Disclaimers

This pattern is provided as a courtesy to quilt stores, catalogs, and quilters. Michael Miller Fabrics, LLC is not responsible for the accuracy of any kits packaged to accompany this pattern. Please direct any inquiries to the kit maker.

Yardage requirements for this pattern may allow for excess yardage to accommodate specific placement of motifs or to allow for any fussy-cutting to achieve the finished quilt design.

While every attempt has been made to give accurate measurements, yardage requirements, and construction directions; this does not allow personal variations in measuring, cutting, and or sewing. The enclosed directions were used in the construction of the original quilt.

Directions

1. Sew together (10) DC5377 3 ½" squares alternating the direction of the stripes in each block for Row #1. Reverse the order for Row #2. Maintaining the checkerboard pattern, make (10) rows total. Sew together into a 30 ½" square. Stripes will create a subtle basket weave pattern.
2. Sew one CX1492 2" x 30 ½" piece to the top and bottom of the quilt. Sew one CX1492 2" x 33 ½" piece to each side.
3. Sew one DC5218 4 ½" x 33 ½" piece to the top and bottom of the quilt. Sew one DC5218 4 ½" x 41 ½" piece to each side.
4. If using fusible web, follow manufacturer's directions for ironing fusible web on the wrong side of DM2999 Silver, DM2999 Platinum, and DM2999 Onyx. If not using fusible web, move to step #5.
5. Following manufacturer's directions for using the "Circle Savvy Ruler" cut the circles and rings noted on the cutting directions for each DM2999 fabric. If not using the ruler, use a compass to draw the circles. Cut out and remove paper backing if necessary. Arrange circles and rings as shown or as desired. The rings were cut once to make them interlock. Conceal cut behind the top ring. Machine appliqué all raw edges to finish.
6. Layer backing, batting, and quilt top. Baste.
7. Quilt as desired.
8. Bind quilt using Jet Brown 2 ½" strips, pieced if needed for length.