

# GARDEN WALL

Date: Aug.09.12



Quilt designed by Marinda Stewart

Size: 42" W x 52" H

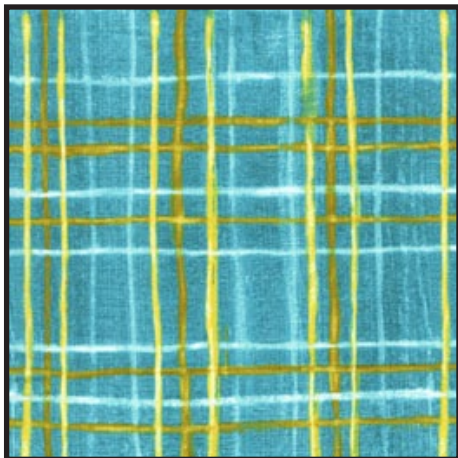
Level: Confident Beginner



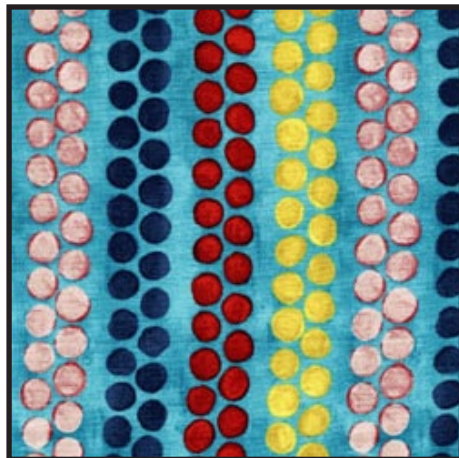
118 West 22nd Street 5th FL. New York, NY 10011 Tel: 212.704.0774 Fax: 212. 633. 0272  
email: [info@michaelmillerfabrics.com](mailto:info@michaelmillerfabrics.com) [www.michaelmillerfabrics.com](http://www.michaelmillerfabrics.com)



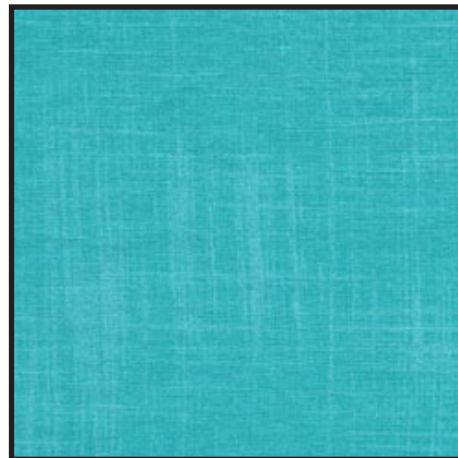
# FABRIC REQUIREMENTS



**CJ5583 Aqua  
Skinny Plaid  
1 1/4 yards**



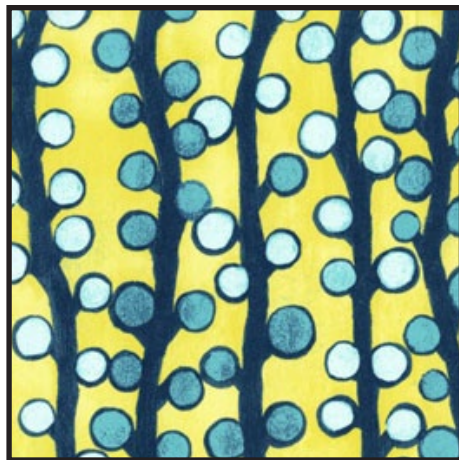
**CJ5585 Aqua  
Beaded Stripe  
1 yard**



**CJ4816 Mermaid  
Painter's Canvas  
5/8 yard**



**CJ5586 Red  
Worn Poppy  
1/2 yard**



**CJ5587 Yellow  
Sprig Dot  
3/8 yard**



**CJ5588 Red  
Daylilies  
1/2 yard**



**CJ5325 Aqua  
Wind Song  
3/8 yard**



**CJ4816 Sky  
Painter's Canvas  
1/4 yard**



**CJ4816 Grass  
Painter's Canvas  
7" x 9" piec**

**Backing & Batting 40" x 60"**

# "Garden Wall"

Quilt by Marinda Stewart

Size: Approximately 42" x 52" Skill Level : Confident Beginner

## Materials

Fabric	Yardage	Cutting
<b>CJ5583 Aqua Skinny Plaid</b>	1 1/4 yards	(2) 4 1/2" W x 44 1/2" H * (2) 4 1/2" W x 42 1/2" H *
<b>CJ5585 Aqua Beaded Stripe</b>	1 yard	(2) 1 3/4" W x 32" H * (2) 1 3/4" W x 44 1/2" H * & **
<b>CJ4816 Mermaid Painter's Canvas</b>	5/8 yard	(1) 6" x 32" (5) 2 1/2" x W.O.F. (2) clouds (from scraps)
<b>CJ5586 Red Worn Poppy</b>	1/2 yard	(1) 32 1/2" length – fussy cut both edges
<b>CJ5587 Yellow Sprig Dot</b>	3/8 yard	(1) 13 1/2" H x 32 1/2" W
<b>CJ5588 Red Daylilies</b>	1/2 yard	(1) 9" H x 32 1/2" W
<b>CJ5325 Aqua Wind Song</b>	3/8 yard	(1) 13 1/2" H x 32 1/2" W Assorted Fragments
<b>CJ4816 Sky Painter's Canvas</b>	1/4 yard	(1) 9" H x 32 1/2" W (3) clouds
<b>CJ4816 Grass Painter's Canvas</b>	7" x 9" piece	(5) leaves – see pattern
<b>Also Needed:</b> 46" x 60" backing, 46" x 60" batting, threads to match, scissors, straight pins, acrylic ruler, rotary cutter, mat, and fusible web.		
NOTE: The quilt is made up of horizontal bands of fabric. CJ5586 is fussy cut following the printed motif on both edges. CJ5583, CJ5325, and CJ4816 Sky. Only the top edge is fussy cut.		
*Cut all pieces vertically ** Piece for length		

## Disclaimers

This pattern is provided as a courtesy to quilt stores, catalogs, and quilters. Michael Miller Fabrics, LLC is not responsible for the accuracy of any kits packaged to accompany this pattern. Please direct any inquiries to the kit maker.

Yardage requirements for this pattern may allow for excess yardage to accommodate specific placement of motifs or to allow for any fussy-cutting to achieve the finished quilt design.

While every attempt has been made to give accurate measurements, yardage requirements, and construction directions; this does not allow personal variations in measuring, cutting, and or sewing. The enclosed directions were used in the construction of the original quilt.

## Directions

1. Fussy cut top and bottom edges of CJ5586 32 ½" piece following the printed motif to create an irregular edge. See photo. Strip width should be approximately 14" high. Place right side up on top of CJ5587 overlap to show approximately 9" of CJ5587 on the bottom. Machine appliqué the irregular edge of CJ5586. Trim away any excess CJ5587 from the back.
2. Place the irregular top edge of CJ5586 right side up on top of the straight edge of CJ5588. Machine appliqué raw edge of CJ5586 to finish. Fussy cut the top edge of CJ5588 approximately 7" from the appliqué edge as shown. Remove excess from the back.
3. Repeat step #2 placing the irregular edge of CJ5588 on top of the straight edge of CJ5325. Machine appliqué the raw edge of CJ5588. Remove excess from the back. Fussy cut the top edge of CJ5325 approximately 6" from the stitched edge.
4. Repeat the process placing the CJ5325 irregular edge on top of CJ4816 Sky. Freehand cut an irregular sky edge along CJ4816 Sky. CJ4816 Sky layer is approximately 3" high.
5. Place the CJ4816 Sky edge on top of CJ4816 Mermaid. Adjust depth of the top edge of CJ4816 Mermaid so quilt top measures 42 ½" high. Machine appliqué CJ4816 Sky edge in place.
6. Following manufacturer's directions, iron fusible web to the wrong side of CJ4816 Grass and scraps of CJ4816 Sky, CJ4816 Mermaid, and CJ5325. Using the provided pattern, trace (5) leaves on the paper side of CJ4816 Grass. Cut out. Remove paper backing. Fuse leaves scattered throughout the CJ5587 bottom band of fabric. Machine appliqué raw edges to finish. Freehand cut (2) CJ4816 Mermaid clouds and (3) CJ4816 Sky clouds as shown. Fuse to the sky as shown. Machine finish edges. From CJ5325 fussy cut fragments of branches and flowers. Add to the top irregular edge of the CJ5325 border as shown. Machine finish the edges.
7. Sew CJ5585 1 ¾" x 32 ½" piece to the top and bottom of the quilt. Sew CJ5585 1 ¾" x 44 ½" piece to each side. All pieces pieced for length.
8. Sew one CJ5583 4 ½" x 44 ½" piece to each side of the quilt. Sew one CJ5583 4 ½" x 42 ½" piece to the top and bottom.
9. Layer backing, batting, and quilt top. Baste.
10. Quilt as desired.
11. Bind quilt using CJ4816 Mermaid 2 ½" strips pieced as needed for length

