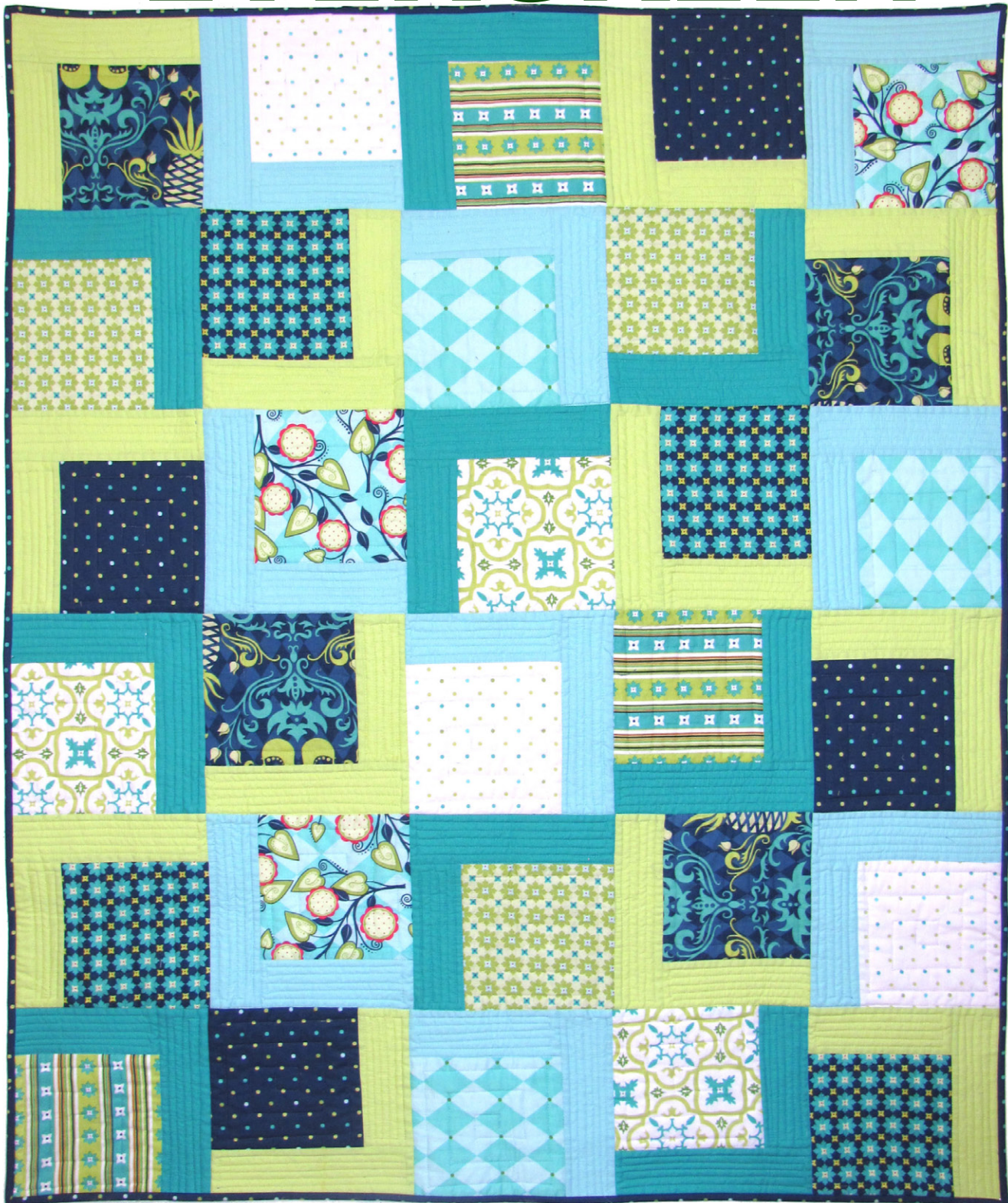


EVERGREEN

Date: Mar.07.12



Size: 40" x 48"

Quilt designed by Ellen Maxwell



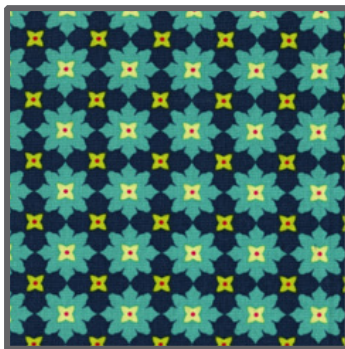
118 West 22nd Street 5th Floor New York, NY 10011
Tel: 212.704.0774 Fax: 212. 633. 0272 email: info@michaelmillerfabrics.com

www.michaelmillerfabrics.com

FABRIC REQUIREMENTS



**DC3899 Navy
Birdie Damask
1/4 yard**



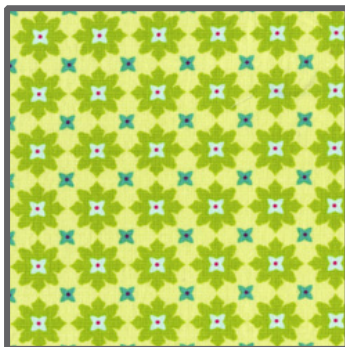
**DC3897 Navy
Tiny Flower
1/4 yard**



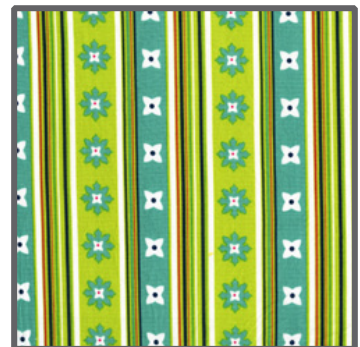
**DC3904 Navy
Tiny Dots
1/4 yard + 1/3 yard for binding**



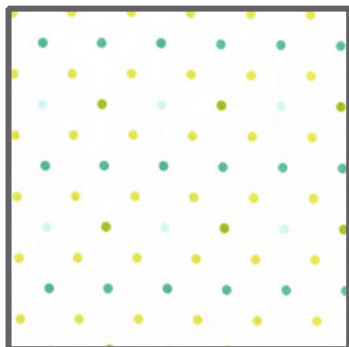
**DC3896 White
Moorish Tile
1/4 yard + 1 1/2 yards for backing**



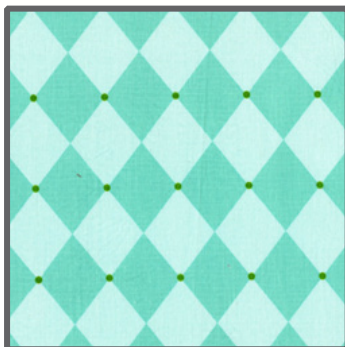
**DC3897 Citron
Tiny Flower
1/4 yard**



**DC3898 Turquoise
Flowery Stripe
1/4 yard**



**DC3904 White
Tiny Dots
1/4 yard**



**DC3903 Aqua
Jester
1/4 yard**



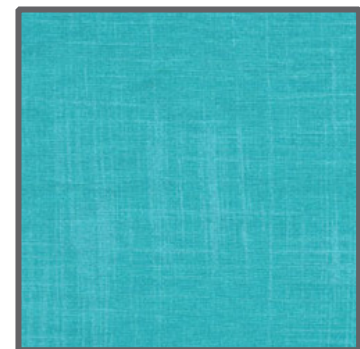
**DC3902 Turquoise
Flora
1/4 yard**



**SC5333 Apple
Cotton Couture
1/3 yard**



**CJ4816 Aqua
Painters Canvas
1/3 yard**



**CJ4816 Mermaid
Painters Canvas
1/3 yard**

"Evergreen"
Quilt by Ellen Maxwell

Size: Approximately 40" w x 48" h

Disclaimers

This pattern is provided as a courtesy to quilt stores, catalogs, and quilters. Michael Miller Fabrics, LLC is not responsible for the accuracy of any kits packaged to accompany this pattern. Please direct any inquiries to the kit maker.

Yardage requirements for this pattern may allow for excess yardage to accommodate specific placement of motifs or to allow for any fussy-cutting to achieve the finished quilt design.

While every attempt has been made to give accurate measurements, yardage requirements, and construction directions; this does not allow personal variations in measuring, cutting, and or sewing. The enclosed directions were used in the construction of the original quilt.

Directions

Step One:

CUT: 6 1/2" x 6 1/2" squares

Group One

4 each DC3899_Navy

4 each DC3897_Navy

4 each DC3904_Navy

Group Two

3 each DC3896_White

3 each DC3897_Citron

3 each DC3898_Turquoise

Group Three

3 each DC3904_White

3 each DC3903_Aqua

3 each DC3902_Turquoise

CUT: 5 strips 2 1/2" x width of fabric from apple cotton couture sub cut into 12 - 2 1/2" x 6 1/2"

12 - 2 1/2" x 8 1/2"

4 strips 2 1/2" x width of fabric from mermaid painters canvas sub cut into 9 - 2 1/2" x 6 1/2"

9 - 2 1/2" x 8 1/2"

4 strips 2 1/2" x width of fabric from aqua painters canvas sub cut into 9 - 2 1/2" x 6 1/2"

9 - 2 1/2" x 8 1/2"

Step Two:

Follow Diagram One. Use 1/4" seams.

Green rectangles will match with Group One squares.

Turquoise rectangles will match with Group Two squares.

Aqua rectangles will match with Group Three squares.

Step Three:

Press all 30 blocks sewn in Step Two.

Step Four:

Follow Diagram Two for block lay out.

Step Five:

Sew blocks in rows and then sew rows together. The

quilt top will be 5 blocks across and 6 blocks down.

Press.

Step Six:

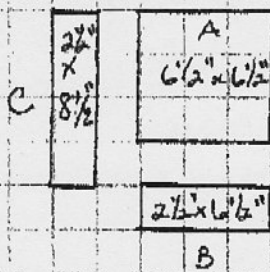
Layer, quilt and bind - cutting 5 strips - 2" x width of

fabric for binding. Sew end to end for French Fold

Binding. The backing will be one piece of fabric.

Evergreen 2/2012 EM

Diagram One



- sew A to B
- then sew C to AB

Make 12 of Group One
9 of Group Two
9 of Group Three

Diagram Two Layout by color combination.

one	Two	Three	one	Two
Three	one	Two	Three	One
One	Two	Three	One	Two
Three	One	Two	Three	One
One	Two	Three	One	Two
Three	one	Two	Three	one

30 total
blocks