

Belle Rose



Size: Approximately 40" W x 51" H

Quilt designed by Marinda Stewart
Confident Beginner



118 West 22nd Street 5th Floor New York, NY 10011
Tel: 212.704.0774 Fax: 212. 633. 0272 email: info@michaelmillerfabrics.com

www.michaelmillerfabrics.com

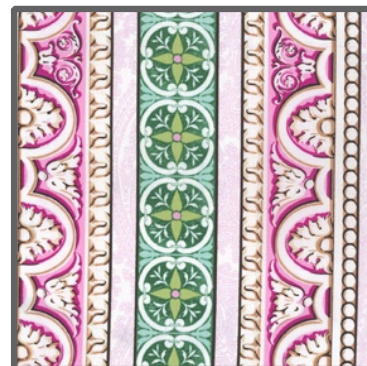
FABRIC REQUIREMENTS



**DC4783 Pink
Belle Rose
3/4 yard**



**DC4900 White
Beau Papillon
1/4 yard**



**DC4898 Pink
Architectural Stripe
1 yard**



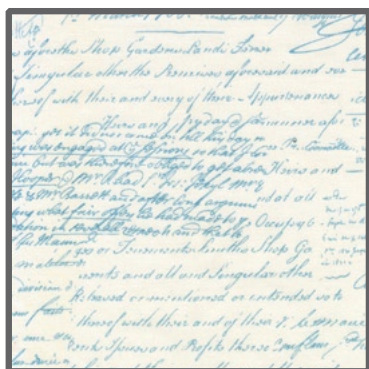
**DC4786 Aqua
Rose Lattice
Fat 1/4**



**DC4786 Pink
Rose Lattice
Fat 1/4**



**DC4896 Celery
Posh Paisley
Fat 1/4**



**CX4521 Breeze
Old Script
Fat 1/4**



**DC4896 Orchid
Posh Paisley
Fat 1/8**



**CX4110 Rose
Charlotte
Fat 1/8**



**CX4350 Lime
Petals
1/4 yard**



**CX4350 Aqua
Petals
1/4 yard**



**DC4897 Pink
Fresco Stripe
3/8 yard**

Backing & Batting 45" x 60"

"Belle Rose"

Quilt by Marinda Stewart

Size: Approximately 40"W x 51"H Skill Level: Confident Beginner

Materials

| Fabric | Yardage | Cutting |
|---|----------|---|
| * DC4783 Pink Belle Rose | 3/4 yard | (1) 18 1/2" W x 25 1/2" H (4) 4 1/2" x 17 1/2" |
| DC4900 White Beau Papillon | 1/4 yard | (4) 3" x 5 1/2" (2) 4 1/2" x 17 1/2" |
| * DC4898 Pink Architectural Stripe | 1 yard | (2) 3 1/2" x 18 1/2" (2) 3 1/2" x 32 1/2" |
| DC4786 Aqua Rose Lattice | Fat 1/4 | (4) 3" x 5 1/2" (4) 5" squares |
| DC4786 Pink Rose Lattice | Fat 1/4 | (4) 3" x 5 1/2" (4) 5" squares |
| DC4896 Celery Posh Paisley | Fat 1/4 | (4) 3" x 5 1/2" (4) 5" squares |
| CX4521 Breeze Old Script | Fat 1/4 | (4) 3" x 5 1/2" (4) 5" squares |
| DC4896 Orchid Posh Paisley | Fat 1/8 | (4) 3" x 5 1/2" |
| CX4110 Rose Charlotte | Fat 1/8 | (4) 3" x 5 1/2" |
| CX4350 Lime Petals | 1/4 yard | (2) 1 1/2" x 30 1/2" (2) 1 1/2" x 37 1/2" |
| CX4350 Aqua Petals | 1/4 yard | (4) 1 1/2" x 18 1/2" (2) 1 1/2" x 35 1/2" |
| DC4897 Pink Fresco Stripe | 3/8 yard | (5) 2 1/2" x W.O.F. - Binding |
| * One way print. Cut vertically. | | |
| Also Needed: 45" x 60" backing & batting, threads to match, scissors, straight pins, acrylic ruler, rotary cutter, and mat. | | |

Disclaimers

This pattern is provided as a courtesy to quilt stores, catalogs, and quilters. Michael Miller Fabrics, LLC is not responsible for the accuracy of any kits packaged to accompany this pattern. Please direct any inquiries to the kit maker.

Yardage requirements for this pattern may allow for excess yardage to accommodate specific placement of motifs or to allow for any fussy-cutting to achieve the finished quilt design.

While every attempt has been made to give accurate measurements, yardage requirements, and construction directions; this does not allow personal variations in measuring, cutting, and or sewing. The enclosed directions were used in the construction of the original quilt.

Directions

1. Sew one CX4350 Aqua 1 1/2" x 18 1/2" piece to the top and bottom of the DC4783 18 1/2" W x 25 1/2" H panel.
2. Sew one DC4898 3 1/2" x 18 1/2" piece to the top and bottom of the panel.
3. Repeat step #1. Sew one CX4350 Aqua 1 1/2" x 35 1/2" piece to each side of the quilt.
4. Randomly piece (14) 3 1/2" x 5 1/2" pieces together along the 5 1/2" edge using two each of DC4786 Aqua, DC4786 Pink, DC4896 Celery, DC4896 Orchid, CX4521, CX4110, and DC4900. Make two rows. Sew one to each side of the quilt.
5. Sew one CX4350 Lime 1 1/2" x 30 1/2" piece to the top and bottom of the quilt. Sew one CX4350 Lime 1 1/2" x 37 1/2" piece to each side of the quilt.
6. To make a right square triangle, place one DC4786 Aqua 5" square right sides together on top of one DC4896 Celery 5" square. Draw a diagonal line from one corner to the opposite corner. Sew 1/4" on each side of the drawn line. Cut apart. Press open. Yield is (2) right square triangles. Make (8). Repeat using DC4786 Pink and CX4521. Total (16) blocks. Trim each to an accurate 4 1/2" square.
7. Alternate (4) each of the right square triangle blocks. Sew together in a row of eight. Make two rows. Sew one to the top and one to the bottom of the quilt.
8. Sew one DC4898 3 1/2" x 32 1/2" piece to the top and bottom of the quilt.
9. Sew one DC4783 4 1/2" W x 17 1/2" H piece to each end of each DC4900 4 1/2" x 17 1/2" piece. Sew one strip to each side of the quilt.
10. Layer backing, batting, and quilt top. Baste.
11. Quilt as desired.
12. Bind quilt using DC4897 pieced with the stripe as needed for length.