

# Baby



Size: Approximately 40" W x 40" H

**Quilt designed by Ellen Maxwell**  
**Skill Level: Beginner**

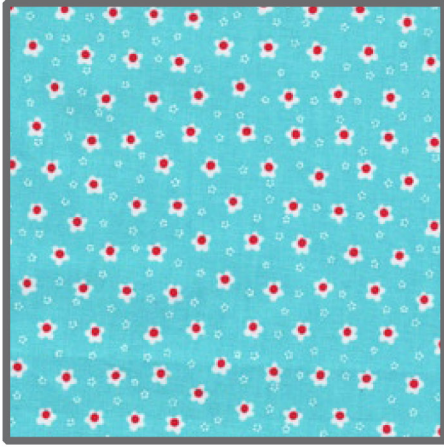


118 West 22nd Street 5th Floor New York, NY 10011  
Tel: 212.704.0774 Fax: 212. 633. 0272 email: [info@michaelmillerfabrics.com](mailto:info@michaelmillerfabrics.com)

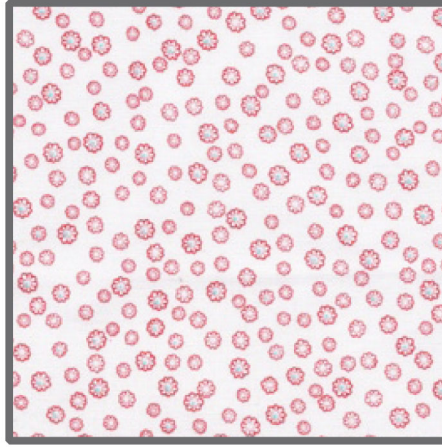
[www.michaelmillerfabrics.com](http://www.michaelmillerfabrics.com)



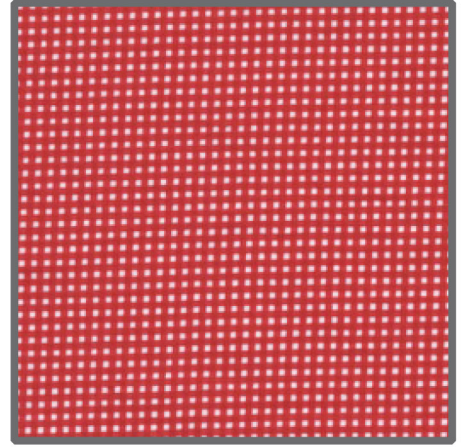
# FABRIC REQUIREMENTS



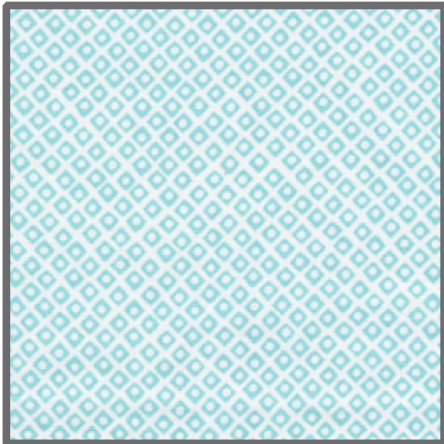
**CX4826 Aqua  
Sweet Posie  
1/8 yard**



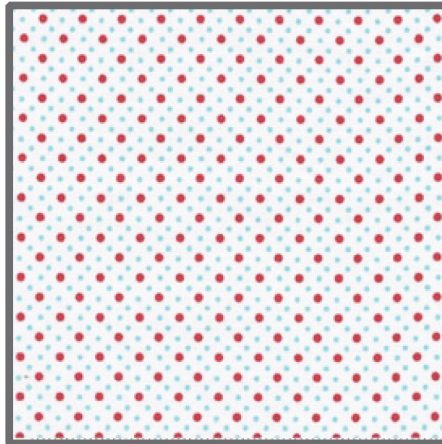
**CX4833 Red  
Mini Fleur  
1/8 yard**



**CX4834 Cherry  
Tiny Gingham  
1/8 yard**



**CX4842 Aqua  
Dot n' Square  
1/8 yard**



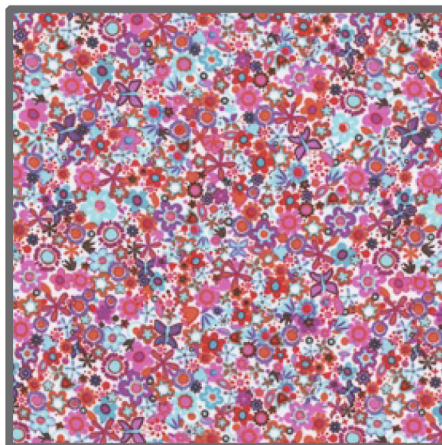
**CX4847 Red  
Dot Duo  
3/4 yard**



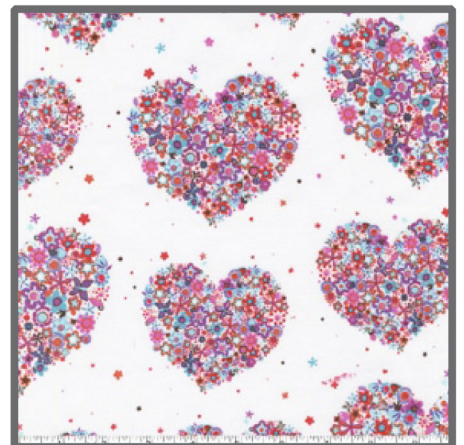
**CX4848 Red  
Baby Boomerang  
1/8 yard**



**CX4834 Purple  
Tiny Gingham  
1/8 yard**



**CX4914 Berry  
Tiny Flowers  
1 yard**



**CX4913 Berry  
Heart and Flowers  
1 1/4 yards**

**Plus 1 1/4 yards of your choice for Backing**



## **"Baby"**

Quilt by Ellen Maxwell <http://beckihomecki.blogspot.com>

Size: Approximately 40" W x 40" H Skill Level: Beginner

### **Disclaimers**

This pattern is provided as a courtesy to quilt stores, catalogs, and quilters. Michael Miller Fabrics, LLC is not responsible for the accuracy of any kits packaged to accompany this pattern. Please direct any inquiries to the kit maker.

Yardage requirements for this pattern may allow for excess yardage to accommodate specific placement of motifs or to allow for any fussy-cutting to achieve the finished quilt design.

While every attempt has been made to give accurate measurements, yardage requirements, and construction directions; this does not allow personal variations in measuring, cutting, and or sewing. The enclosed directions were used in the construction of the original quilt.

### **Directions**

#### **Step One:**

CUT: from CX4847\_Red 1 - 20 1/2" x 20 1/2" for quilt center from CX4914\_Berry 1 - 22" x 18" for large heart 4 - 2" x wof for French Fold Binding from CX4913\_Berry 2 - 8 1/2" x 41" lengthwise first 2 - 8 1/2" x 24 1/2" crosswise for quilt outer borders

#### **Step Two:**

Fold the fabric for the heart in half - right sides together - and draw a pencil line of half a heart. Cut it out - just like in grade school. For needle turn applique, allow a scant 1/4" all around to turn under.

Center large heart on background fabric and pin in place. Applique. Trace letters on fabric for "baby" and applique in center of heart.

#### **Step Three:**

Cut a 1 1/2" strip or a 2" strip of each of the following fabrics:

CX4834\_Purple CX4848\_Red CX4847\_Red

CX4842\_Aqua CX4834\_Cherry CX4826\_Aqua

CX4833\_Red CX4914\_Berry

Arrange in a pleasing order, alternating widths, and sew a strip set. (1/4" seam allowance) Press all seams in one direction. Cut in 2 1/2" strips.

These strip sets will form the inner border. Stitch strip sets end to end to reach the length needed to go around the center square. 20 1/2" long for the top and bottom of the center square. 24 1/2" long for the sides. Press.

#### **Step Four:**

Sew the outer borders to the center square. Top and bottom first; and then sides.

#### **Step Five:**

Layer, quilt and bind!