

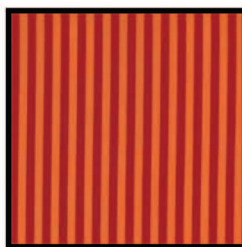
Fabric Requirements



*CX4061 Black
Zoology
1-3/4 yard



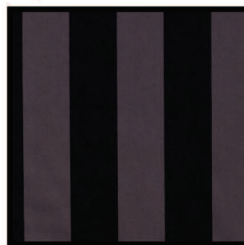
CX3744 Kiwi
Quarter Dot
5/8 yard



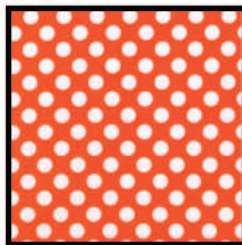
CX3584 Clementine
Clown Stripe
5/8 yard



CX3660 Avocado
Pod Vine
1/2 yard



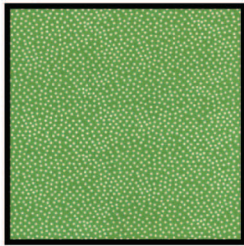
CX3745 Mud
Two by Two Stripe
1/2 yard



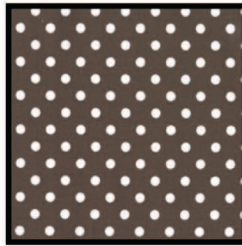
CX1492 Tangerine
Ta Dot
1/2 yard



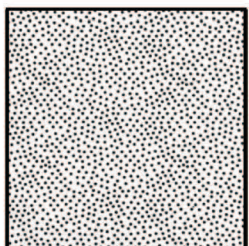
Jet Brown
3/8 yard



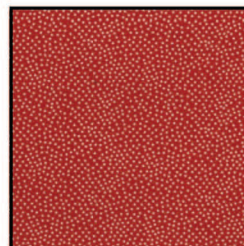
CX1065 Apple
Garden Pindot
1/8th yard



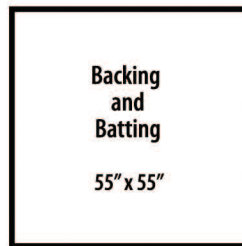
CX2490 Brown
Dumb Dot
Fat 1/4



CX1065 Dalmation
Garden Pindot
Fat 1/4



CX1065 Cherry
Garden Pindot
3" x 5" piece



Backing
and
Batting

55" x 55"

Giraffes, Elephants and Hippos – Oh My!



Quilt is approximately 55" X 55"

By Marinda Stewart

Skill Level: Beginner



118 West 22nd Street 5th Floor New York, NY 10011

Tel: 212.704.0774 Fax: 212.633.0272 Email: info@michaelmillerfabrics.com

www.michaelmillerfabrics.com

* One-way fabric needed to keep the motif upright.

APRIL 24, 2009

Giraffes, Elephants and Hippos! Oh My!

Quilt designed by Marinda Stewart. Quilt measures approximately 50" x 50"

Always measure the quilt top before cutting border lengths.

Fabric:	Yardage:	Cutting:
*CX4061 Black	1-3/4 yards	Cut two 5-1/2" H x 40-1/2" W strips for the outer top and bottom borders. Cut two 5-1/2" W x 50-1/2" H strips for the side outer borders.
CX3744 Kiwi	5/8 yard	Cut one 18-1/2" x 22-1/2" strip.
CX3584 Clementine	5/8 yard	Cut one 2-1/2" x 38-1/2" strips. Cut one 2-1/2" x 14-1/2" strips. Cut two 1-1/2" x 38-1/2" strips. Cut two 1-1/2" x 40-1/2" strips. Cut two 2-1/2" x 22-1/2" strips.
CX3660 Avocado	1/2 yard	Cut one 14-1/2" x 34-1/2" strip.
CX3745 Mud	1/2 yard	Cut one 14-1/2" x 22-1/2" strip.
CX1492 Tangerine	1/2 yard	See instructions to cut one giraffe.
Jet Brown	3/8 yard	Cut five 2-1/2" x width of fabric (WOF) for the binding.
CX1065 Apple	1/8 yard	Cut one 2-1/2" x 14-1/2" strip. Cut one 2-1/2" x 22-1/2" strip.
CX2490 Brown	Fat 1/4	See instructions to cut one hippo.
CX1065 Dalmatian	Fat 1/4	See instructions to cut one elephant and the giraffe spots.
CX1065 Cherry	3" x 5" piece	See instructions to cut one bird.

You will also need:

*One-way fabric-extra yardage needed to keep the motif upright.

55" X 55" backing

55" X 55" batting

2 yards of Fusible Web

Threads to match

Scissors, straight pins, acrylic ruler, mat, rotary cutter

Disclaimers

• This pattern is provided as a courtesy to quilt stores, catalogs and quilters. Michael Miller Fabrics, LLC is not responsible for the accuracy of any kits packaged to accompany this pattern. Please direct any inquiries to the kit maker.

• Yardage requirements for this pattern may allow for excess yardage to accommodate specific placement of motifs or to allow for any fussy-cutting to achieve the finished quilt design.

• While every attempt has been made to give accurate measurements, yardage requirements and construction directions, this does not allow for personal variations in measuring, cutting and or sewing. The enclosed directions were used in the construction of the original quilt.

Assembly Instructions:

- 1) Enlarge the elephant and hippo templates 200%. Enlarge the giraffe templates 400%.
- 2) Following the manufacturer's instructions, trace each enlarged template onto the paper side of the fusible web.
- 3) Roughly cut out each shape about 1/8" outside of the drawn lines.
- 4) Press the animals to the backside of the fabrics as listed on the templates. Cut out each shape on the drawn lines.
- 5) Refer to the quilt photo for placement and press the giraffe with the spots onto the 14-1/2" x 34-1/2" CX3660 Avocado piece. Press the elephant onto the 18-1/2" x 22-1/2" CX3744 Kiwi piece. Press the hippo and the bird onto the 14-1/2" x 22-1/2" CX3745 Mud piece.
- 6) Finish the raw edges of each shape with a decorative stitch such as a satin or buttonhole stitch. Refer to the quilt photo to draw and satin stitch the bird's eye.
- 7) Sew one 2-1/2" x 14-1/2" CX3584 Clementine strip to the bottom of the giraffe panel. Sew one 2-1/2" x 14-1/2" CX1065 Apple strip to the bottom of the 2-1/2" x 14-1/2" CX3584 Clementine strip. Set the completed giraffe panel aside.
- 8) Sew one 2-1/2" x 22-1/2" strip to the top of the elephant panel. Sew one 2-1/2" x 22-1/2" CX1065 Apple strip to the top of the Clementine strip to complete the elephant panel.
- 9) Sew the remaining 2-1/2" x 22-1/2" CX3584 Clementine strip to the top of the hippo panel to complete the hippo panel.
- 10) Sew the hippo panel to the bottom of the elephant panel.
- 11) Sew the 2-1/2" x 38-1/2" CX3584 Clementine strip to the left side of the elephant/hippo panel.
- 12) Sew the giraffe Panel to the left side of the 2-1/2" x 38-1/2" CX3584 Clementine strip to make the quilt top.
- 13) Sew one 1-1/2" x 38-1/2" CX3584 Clementine strip to the top and bottom of the quilt top. Sew one 1-1/2" x 40-1/2" CX3584 Clementine strip to each side of the quilt top.
- 14) Sew one 5-1/2" H x 40-1/2" W CX4061 Black strip to the top and bottom of the quilt top. Sew one 5-1/2" W x 50-1/2" H CX4061 Black strip to each side of the quilt top.
- 15) Lay and quilt as desired. Bind the quilt top using your favorite method using the five 2-1/2" x WOF Jet Brown strips.

Giraffes, Elephants and Hippos! Oh My!

Elephant Template
Enlarge 200%
Reversed for Fusible Applique

Satin Stitch the Elephant Ear

Trace one
CX1065 Dalmatian

Trace one
Jet brown



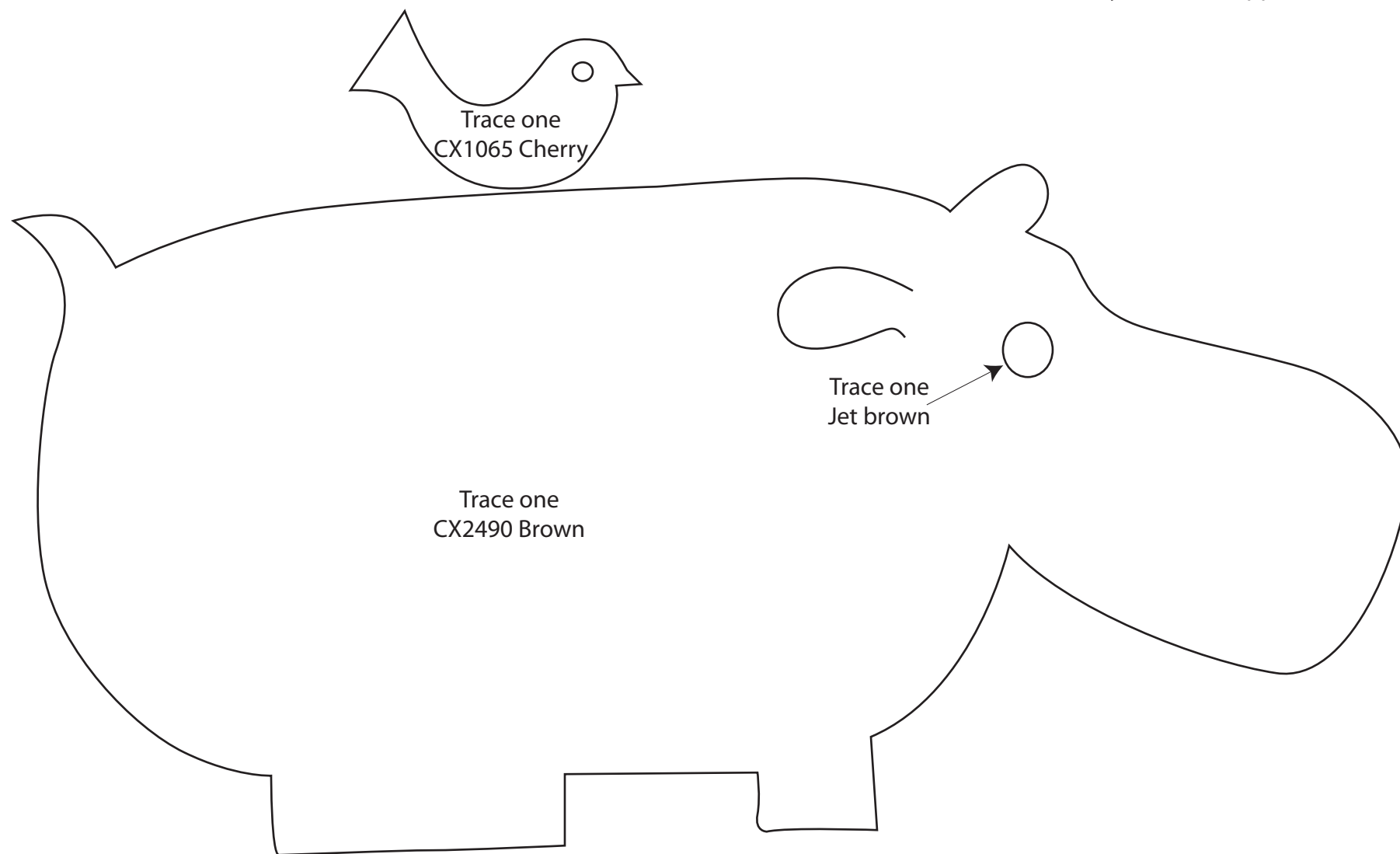
Giraffes, Elephants and Hippos! Oh My!

Hippo & Bird Templates

Enlarge 200%

Reversed for Fusible Applique

Satin Stitch the Bird's Eye and the Hippo Ear



Giraffes, Elephants and Hippos! Oh My!

Giraffe Template
Enlarge 400%
Reversed for Fusible Applique

