

michael miller FABRICS

Taking Flight

SIZE: 44-3/4" x 56-3/4" • LEVEL: Intermediate • PATTERN BY: Marsha Evans Moore • FABRIC COLLECTION: Silk Road



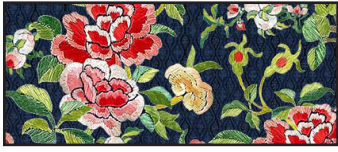
THIS IS A DIGITAL REPRESENTATION OF THE QUILT TOP, FABRIC MAY VARY.

PLEASE NOTE: BEFORE BEGINNING YOUR PROJECT, CHECK FOR ANY PATTERN UPDATES AT MICHAELMILLERFABRICS.COM'S FREE PROJECTS SECTION.

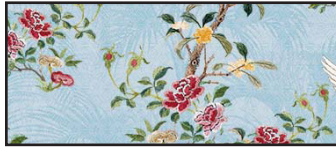
p.212.704.0774 | info@michaelmillerfabrics.com | www.michaelmillerfabrics.com



Taking Flight



FABRIC A
DDC12131_Ink
3/8 yard



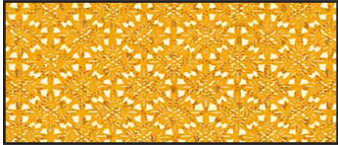
FABRIC B
DDC12132_Breeze
1 yard



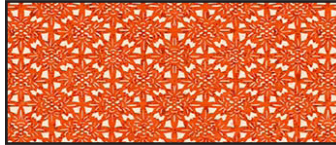
FABRIC C
DDC12134_Ink
3/8 yard



FABRIC D
DDC12135_Royal
7/8 yard



FABRIC E
DDC12136_Gold
3/8 yard



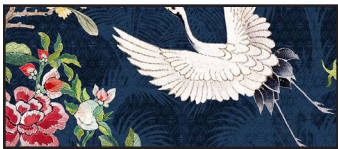
FABRIC F
DDC12136_Lava
1/8 yard or Fat Eighth



FABRIC G
DDC12138_Breeze
1/3 yard or Fat Quarter



FABRIC H
DDC12138_Cream
1/3 yard or Fat Quarter



FABRIC I
DDC12139_Ink
1 Panel



FABRIC J
SC5333_Apri
1/4 yard or Fat Eighth

Note: See Appliqué Cutting Instructions before cutting templates.

KEY	CUTTING INSTRUCTIONS
A	(2) 4" x 42" strips; subcut (12) 4" squares.
B	(4) 4" x 27" LOF strips; sew short ends together. Subcut (2) 4" x 49-3/4" borders. (2) 4" x 42" WOF strips and (1) 4" x 16" WOF strip; sew short ends together. Subcut (2) 4" x 44-3/4" borders.
C	Centering design, <i>fussy cut</i> : (3) Lantern templates.
D	FOR BINDING: (5) 2-1/4" x 42" strips, sew short ends together. (5) 2-1/4" x 42" strips; sew short ends together. Subcut (2) 2-1/4" x 46-1/4" borders and (2) 2-1/4" x 37-3/4" borders.
E	(3) 1-3/4" x 42" strips; sew short ends together. Subcut (2) 1-3/4" x 43-1/2" borders. (2) 1-7/8" x 25-3/4" borders. (3) Tassel bottom templates. (6) Lantern Hanger 2 templates.
F	(3) Tassel Top templates. (3) Rectangle templates.
G	(2) 9" x 15-3/4" rectangles.
H	(1) 9" x 15-3/4" rectangle.
I	Centering design, <i>fussy cut</i> : 23-1/4" x 43-1/2" rectangle.
J	(3) Lantern Hanger 1 templates.
	Batting 53" x 64"

ADDITIONAL MATERIALS

2-3/4 yard backing fabric

Template plastic

Water soluble marking pen

Optional: Paper backed fusible webbing.

Thread to match fabrics

Basic sewing supplies

Sewing machine

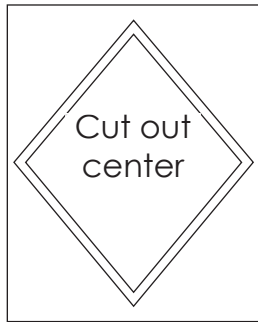
Rotary cutter, ruler and mat

Taking Flight

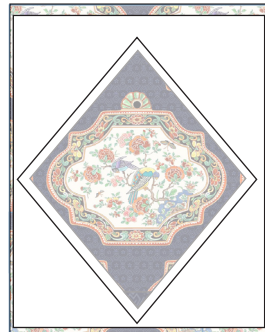
APPLIQUÉ CUTTING INSTRUCTIONS

1. Trace templates to paper side of fusible webbing. Cut out center of the Lantern fusible along the dashed line to avoid stiffness in the center of the fabric.
2. Fuse paper backed fusible shapes to the wrong side of the fabric. Cut out shapes. Transfer placement marks to right side of fabrics using a water soluble marking pen or chalk pencil, if desired. Carefully removed paper backing.

Paper backed
fusible interfacing



Fabric
wrong side



Appliqué pieces



Make 3 each

Lantern Blocks

3. Draw a diagonal line on the wrong side of (1) **A** 4" square. Make 12.
4. Place (1) **A** 4" square wrong side up on the upper left corner of (1) **G** 9" x 15-3/4" rectangle. Sew along the drawn line. Trim 1/4" from the stitching as indicated by the solid line.
5. Press the **A** triangle open.
6. Repeat steps 4-5 on the remaining (3) corners of the rectangle.

Step 3

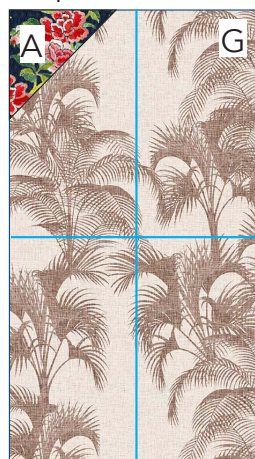


Make 12

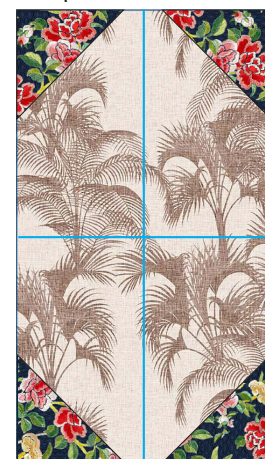
Step 4



Step 5



Step 6



Make 2

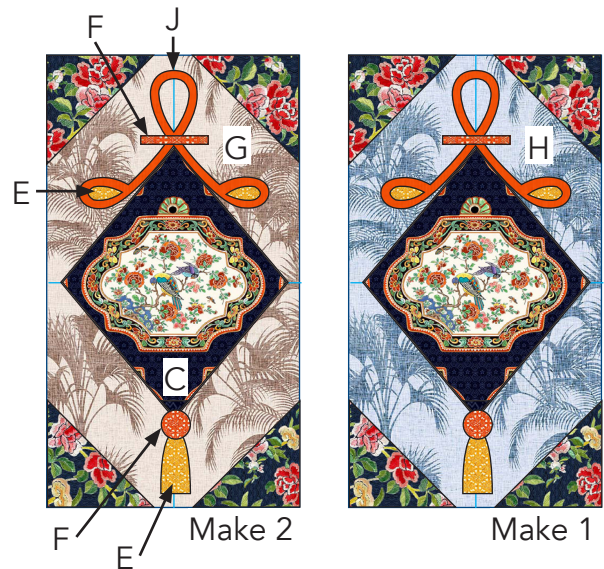
Taking Flight

7. Place (1) **C** Lantern centered on (1) **A/G** rectangle. Fuse, baste or pin in place. Zigzag stitch along the edges of the Lantern.

8. Fuse, baste or pin (1) **J** Lantern Hanger template 1, (2) **E** Lantern Hanger template 2, and (1) **F** rectangle above the Lantern. Zigzag stitch along the edges of the pieces.

9. Fuse, baste or pin (1) **E** Tassel bottom and (1) **F** Tassel top below the Lantern. Zigzag stitch along the edges of the pieces to make an **A/G** Lantern block. Make 2.

10. Following steps 3-9, make (1) **A/H** Lantern block.



QUILT ASSEMBLY

11. Following the Quilt Layout on page 5, sew (1) **E** 1-3/4" x 43-1/2" border to each side of (1) **I** 23-1/4" x 43-1/2" rectangle. Sew (2) **E** 1-7/8" x 25-3/4" borders to top and bottom of the quilt

12. Sew (2) **A/G** blocks to the top and bottom of (1) **A/H** block. Sew the blocks to the right side of the quilt.

13. Sew (1) **D** 2-1/4" x 46-1/4" border to each side of the quilt. Sew (2) **D** 2-1/4" x 37-3/4" borders to top and bottom of the quilt

14. Sew (1) **B** (2) 4" x 49-3/4" border to each side of the quilt. Sew (2) **B** 4" x 43-3/4" borders to top and bottom of the quilt.

Taking Flight

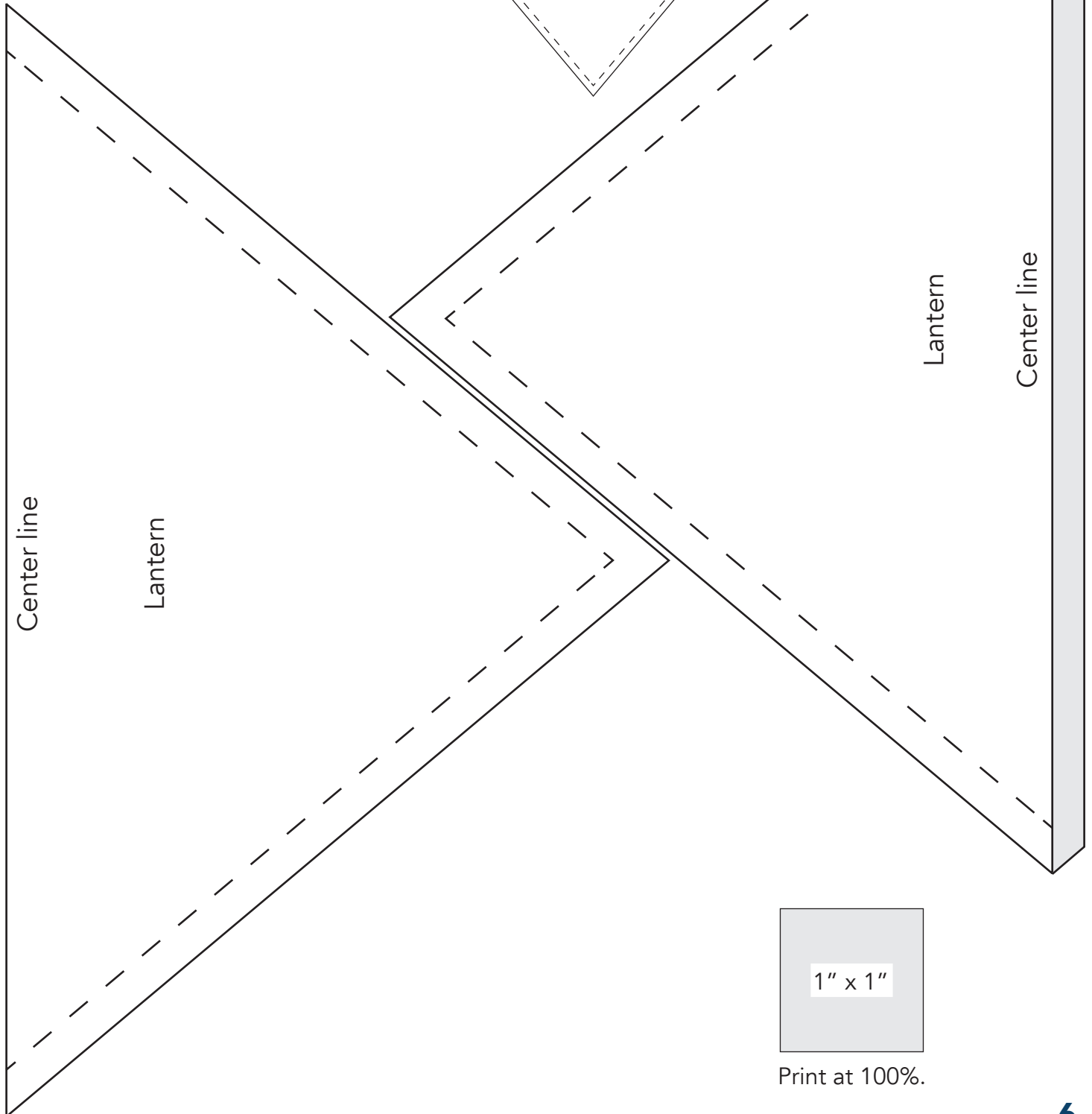
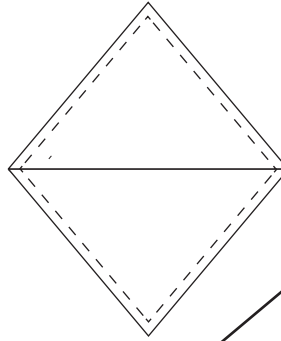


FINISHING: Layer quilt top, batting and backing together to form quilt sandwich. Baste and quilt as desired. Bind using five fabric **D** 2-1/4" strips.

Taking Flight

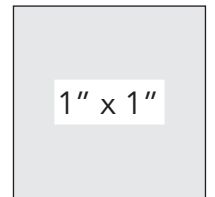
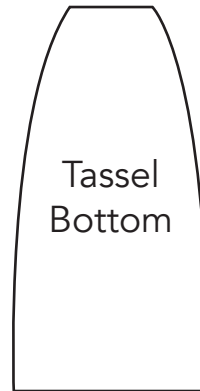
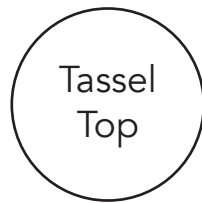
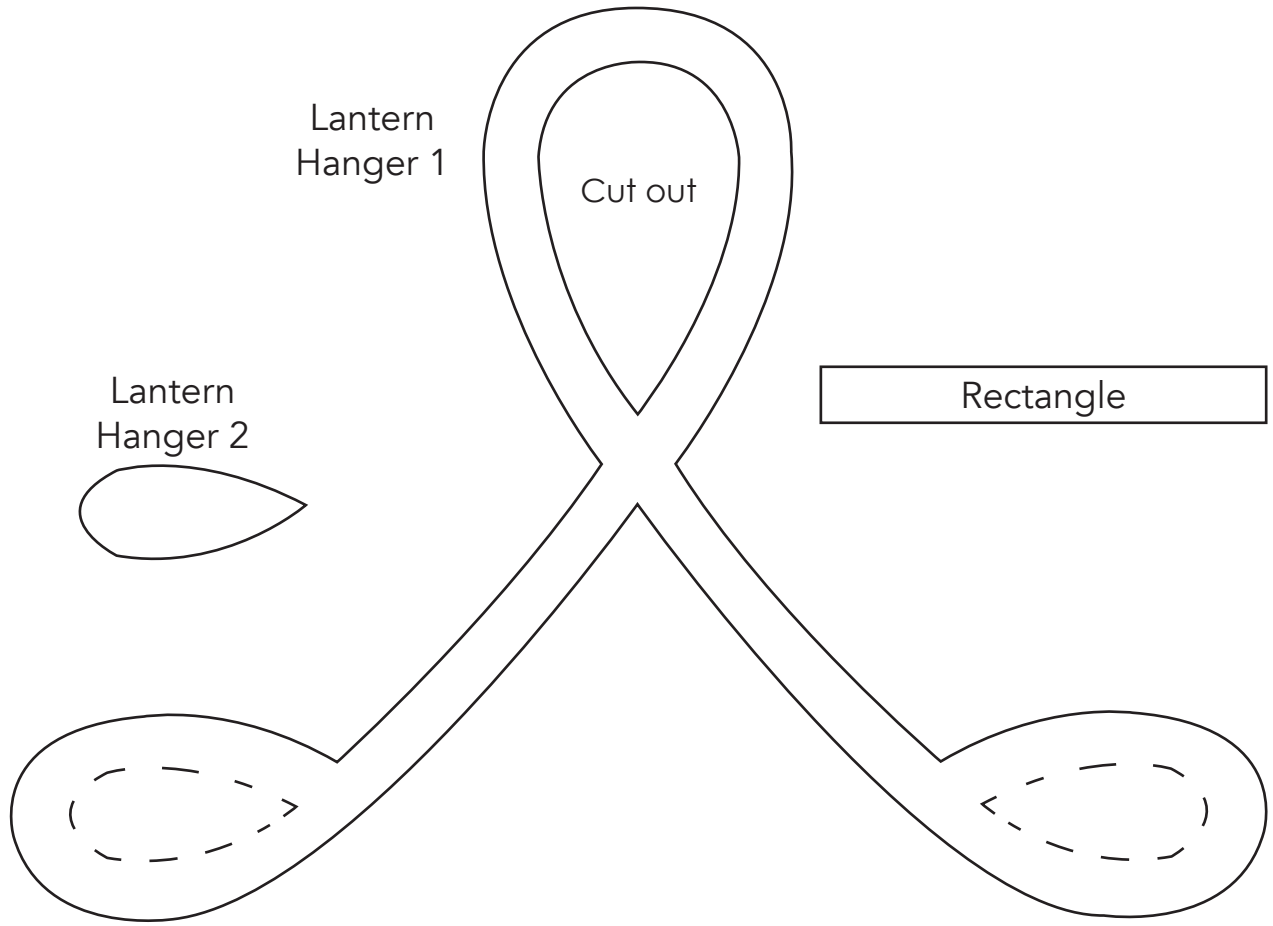
Templates

Overlap the upper Lantern template with the lower Lantern template matching the centerlines. Glue or tape the pieces together.



Print at 100%.

Taking Flight



Print at 100%.