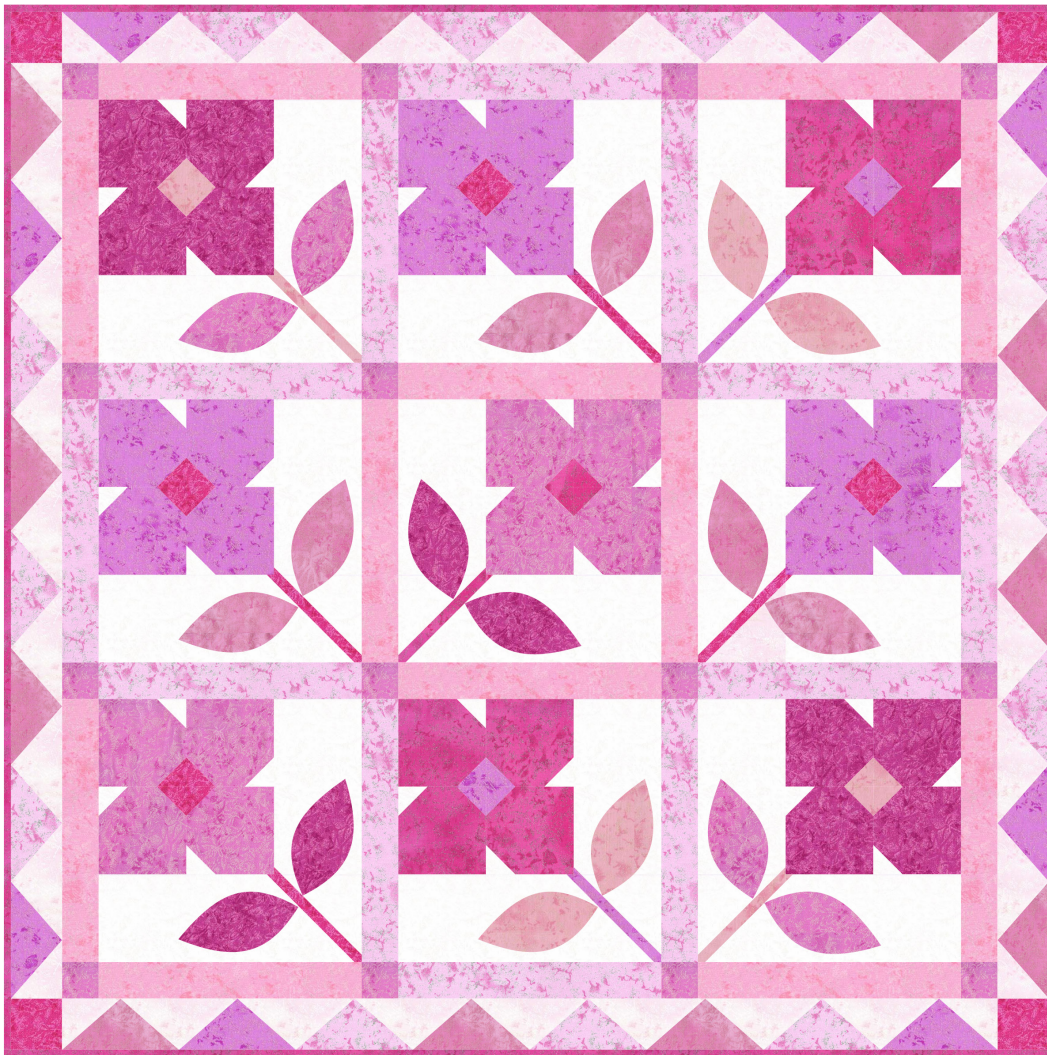


michael miller FABRICS

FLOWER BOX

SIZE: 36" X 36" • LEVEL: Intermediate • PATTERN BY: Marsha Evans Moore
• FABRIC COLLECTION: Fairy Frost Flora Fat Quarter Bundle



THIS IS A DIGITAL REPRESENTATION OF THE QUILT TOP, FABRIC MAY VARY.

PLEASE NOTE: BEFORE BEGINNING YOUR PROJECT, CHECK FOR ANY PATTERN UPDATES AT MICHAELMILLERFABRICS.COM'S FREE PROJECTS SECTION.

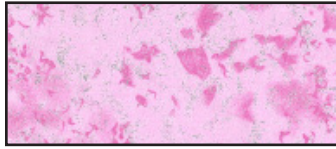
p.212.704.0774 | info@michaelmillerfabrics.com | www.michaelmillerfabrics.com



Flower Box



FABRIC A
CM0376_Cupcake
Fat Quarter



FABRIC B
CM0376_Garden
Fat Quarter



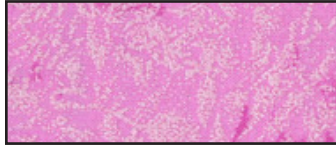
FABRIC C
CM0376_Opal
Fat Quarter



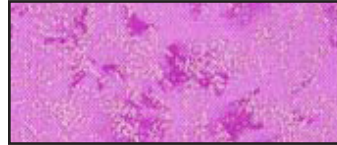
FABRIC D
CM0376_Soft Pink
Fat Quarter



FABRIC E
CM0376_Pink
Fat Quarter



FABRIC F
CM0376_Carnation
Fat Quarter



FABRIC G
CM0376_Azalea
Fat Quarter



FABRIC H
CM0376_Flower
Fat Quarter



FABRIC I
CM0376_Petal
Fat Quarter and
1/4 yard for binding



FABRIC J
CM0376_Wild Berry
Fat Quarter



FABRIC K
CM0376_Snow
5/8 yard

Flower Box

KEY	CUTTING INSTRUCTIONS
A	(7) 5-1/4" squares; cut in half diagonally twice to make (28) triangles. (4) 2-7/8" squares; cut in half diagonally once to make (8) triangles.
B	(12) 1-3/4" x 9-1/2" strips. (3) 5-1/4" squares; cut in half diagonally twice to make (12) triangles.
C	(4) Leaf Templates. (8) 1-1/2" squares. (2) 1-1/4" x 5" bias strips for stems.
D	(12) 1-3/4" x 9-1/2" strips.
E	(3) 5-1/4" squares; cut in half diagonally twice to make (12) triangles. (6) Leaf Templates.
F	(8) 3-1/2" squares. (16) 1-3/4" squares. (4) Leaf Templates.
G	(2) 5-1/4" squares; cut in half diagonally twice to make (8) triangles. (12) 3-1/2" squares. (8) 1-1/2" squares. (2) 1-1/4" x 5" bias strips for stems.
H	(12) 1-1/2" squares. (3) 1-1/4" x 5" bias strips for stems. (4) 2-1/2" squares.
I	(8) 3-1/2" squares. (8) 1-1/2" squares. (1) 1-1/4" x 5" bias strip for stems. FOR BINDING: (4) 2-1/4" x 42" strips, sew short ends together.
J	(8) 3-1/2" squares. (4) Leaf Templates.
K	(5) 3-1/2" x 41" strips; subcut (9) 3-1/2" x 9-1/2" rectangles and (9) 3-1/2" x 6-1/2" rectangles. (2) 1-1/2" x 41" strips; subcut (36) 1-1/2" squares.

Flower Box

ADDITIONAL MATERIALS

1-1/4 yards backing fabric

Thread to match fabrics

Basic sewing supplies

Template plastic

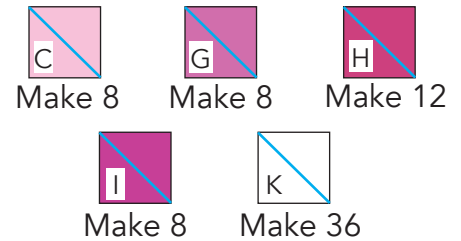
Sewing machine

Rotary cutter, ruler and mat

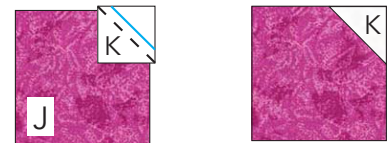
Optional: Freezer paper or plain paper for appliqué templates.

BLOCKS

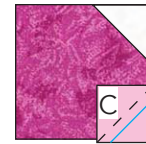
1. Draw a diagonal line on wrong side of (8) **C** 1-1/2" squares, (8) **G** 1-1/2" squares, (16) **H** 1-1/2" squares, (4) **I** 1-1/2" squares and (36) **K** 1-1/2" squares using a marking pen.



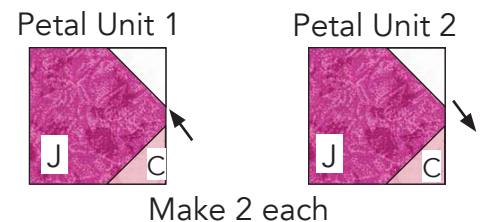
2. Place (1) **K** 1-1/2" square on the upper right corner of (1) **J** 3-1/2" square with right sides together. Sew on the drawn line. Trim the fabric 1/4" from the stitching as indicated by the solid line. Press the **K** piece open with the seam allowance toward the **J** square.



3. Place (1) **C** 1-1/2" square on the lower right corner of the same **J** 3-1/2" square with right sides together. Sew on the drawn line. Trim the fabric 1/4" from the stitching as indicated by the solid line.

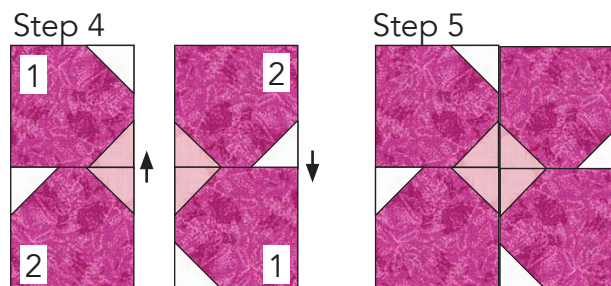


Press the **C** piece open with the seam allowance toward the **J** square on (2) petal 1 units. Press the seam allowance toward the **C** triangle on (2) petal 2 units as shown by the arrows. Make 2 each.



4. Sew (2) petal units together to make (1) 1/2 flower unit. Press seams in the direction of the arrows. Make 2.

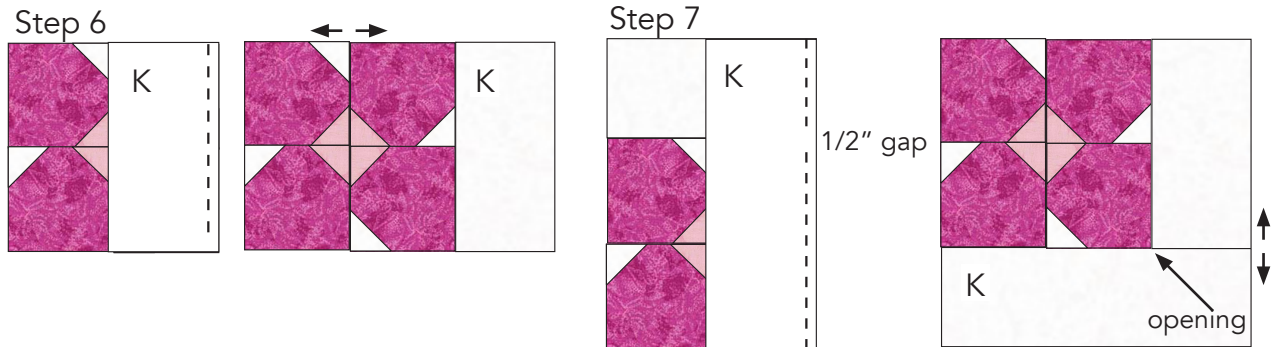
5. Sew (2) half flower units together to make (1) flower unit. Make 1.



Flower Box

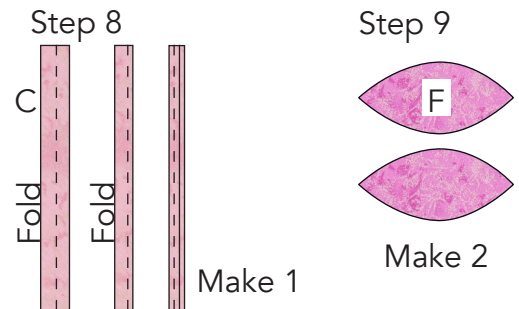
6. Sew (1) **K** 3-1/2" x 6-1/2" rectangle to one side of the flower unit ending the stitching 1/2" from the lower edge of the seam. Press the seam allowance open.

7. Sew (1) **K** 3-1/2" x 9-1/2" rectangle to the bottom of flower/rectangle unit beginning at the top edge and ending 1/4" before the seam. Begin stitching the remaining seam 1/4" after the seam and continue to the end leaving an opening at the corner of the flower. Press the seam allowance open so corner of flower unit is squared off.



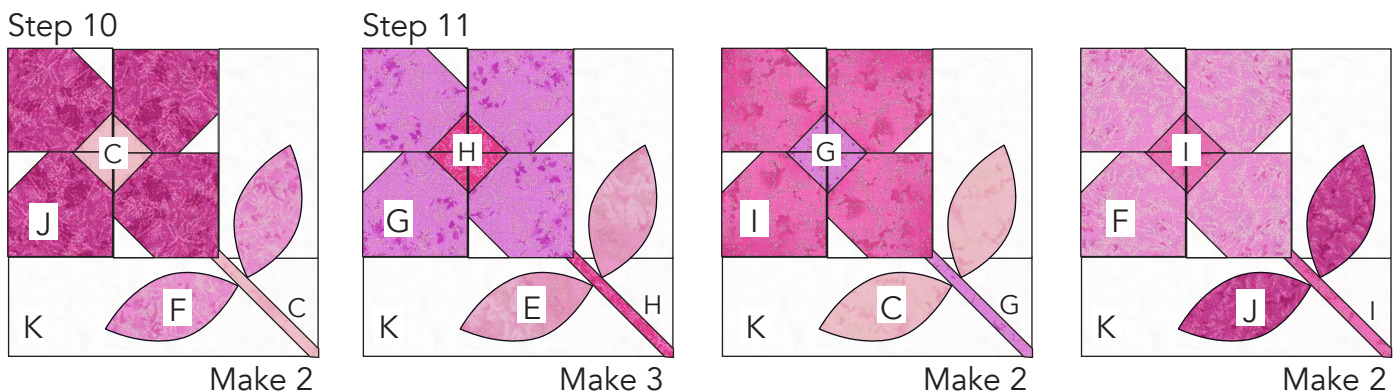
8. Fold (1) **C** 1-1/4" x 5-1/2" strip in half lengthwise with wrong sides together. Sew 1/4" from fold. Trim raw edge 1/8" from stitching. Press stem flat with seam centered on one side. Make 1.

9. Using your favorite appliqué method, prepare (2) **F** leaf pieces. Make 2.



10. Insert one end of the stem in the opening at the corner of the flower. Place the stem diagonally ending at the lower corner of the block. Sew the sides of the stem in place. Sew the opening at the corner of the flower closed. Trim the stem even with the corner of the block. Position 2 leaves on either side of the stem and sew in place. Make 2.

11. Following steps 2-10, make flower blocks using the fabrics as shown. Make the number indicated.



Flower Box

PATCHWORK BORDER

12. Sew together (3) **B** 5-1/4" triangles, (3) **E** 5-1/4" triangles and (2) **G** 5-1/4" triangles alternating with (7) **A** 5-1/4" triangles. Sew (2) **A** 2-7/8" triangles to ends to make a rectangle. Make 4.



Make 4

ASSEMBLY

13. Following the layout diagram on page 6, arrange the blocks in (3) rows of (3) blocks. Note the orientation of the blocks. Arrange (2) **B** and **D** 1-3/4" x 9-1/2" strips alternating with the blocks as shown. Sew (4) strips alternating with 3 blocks to make the block rows.

14. Sew together (4) **F** 1-3/4" squares alternating with (2) **B** and (1) **D** 1-3/4" x 9-1/2" strips to make sashing strip 1. Note the position of the strips. Make 2.

15. Sew (4) **F** 1-3/4" squares alternating with (1) **B** and (2) **D** 1-3/4" x 9-1/2" strips to make sashing strip 2. Note the position of the strips. Make 2.

16. Sew together (4) sashing rows alternating with (3) block rows.

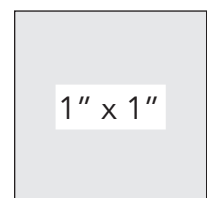
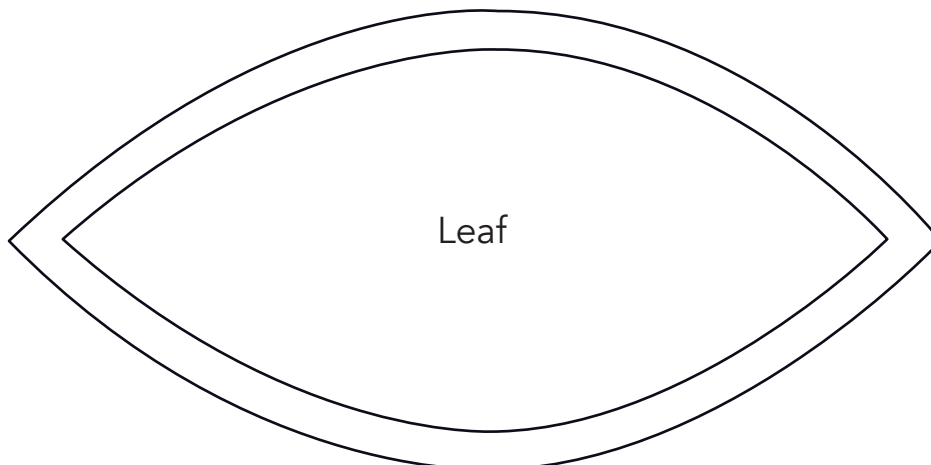
17. Sew (2) patchwork borders to sides of the quilt.

18. Sew (2) **H** 2-1/2" squares to ends of (2) patchwork borders. Sew to top and bottom of the quilt.

Template

For turned-edge appliqué, cut along the solid outer line.

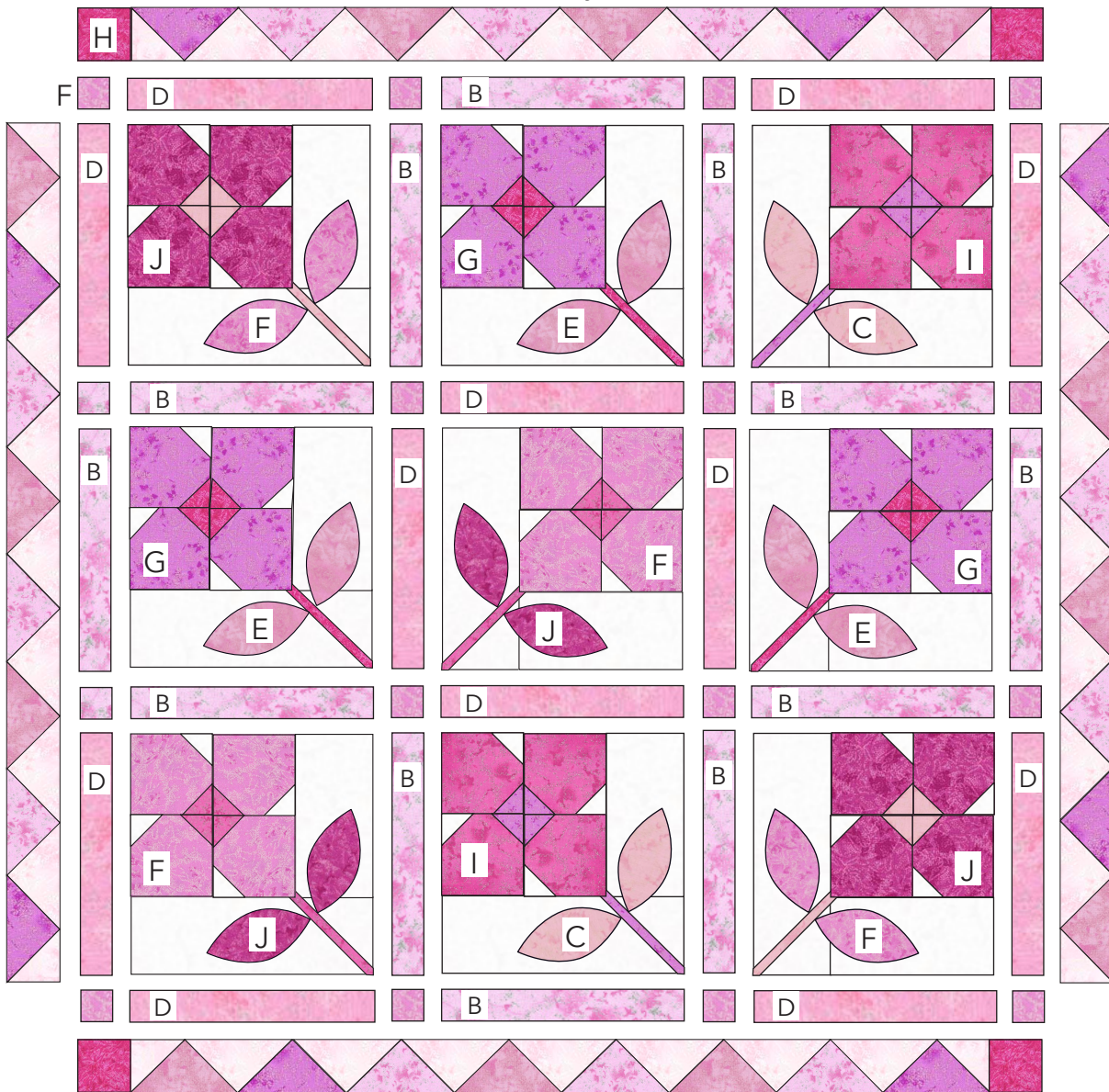
For raw-edge appliqué, cut along the solid inner line.



Print at 100%.

Flower Box

Quilt Layout



FINISHING: Layer quilt top, batting and backing together to form quilt sandwich. Baste and quilt as desired. Bind using four fabric I 2-1/4" strips.