

michael miller FABRICS

Candlelight

SIZE: 27-1/2" x 17" • LEVEL: Intermediate • PATTERN BY: Marsha Evans Moore •
FABRIC COLLECTION: Fairy Frost Fire Fat Quarter Bundle



THIS IS A DIGITAL REPRESENTATION OF THE QUILT TOP, FABRIC MAY VARY.

PLEASE NOTE: BEFORE BEGINNING YOUR PROJECT, CHECK FOR ANY PATTERN UPDATES AT MICHAELMILLERFABRICS.COM'S FREE PROJECTS SECTION.

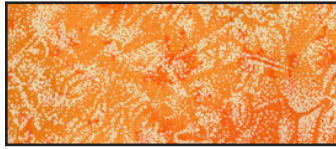
p.212.704.0774 | info@michaelmillerfabrics.com | www.michaelmillerfabrics.com



Candlelight



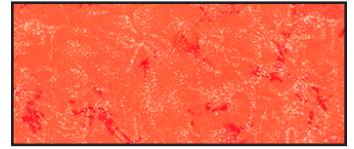
FABRIC A
CM376_Carrot
Fat Quarter



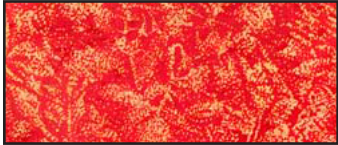
FABRIC B
CM376_Tangerine
Fat Quarter



FABRIC C
CM376_Papaya
Fat Quarter



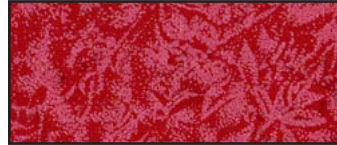
FABRIC D
CM376_Clementine
Fat Quarter



FABRIC E
CM376_Cherry
Fat Quarter



FABRIC F
CM376_Spice
Fat Quarter



FABRIC G
CM376_Blood
Fat Quarter



FABRIC H
CX10981_Multi
Fat Quarter

KEY	CUTTING INSTRUCTIONS
A	(1) Large Flame 1 Template. (2) Small Flame 1 Templates and (2) Small Flame 1 Templates reversed. (4) 2" squares.
B	(1) 4-1/4" x 7-1/2" rectangle. (2) 2-1/4" x 7-3/4" rectangles. (1) Small Triangle Template and (1) Small Triangle Template reversed.
C	(4) 2" x 21" strips; sew ends of 3 strips together. Subcut (2) 2" x 24-1/2" borders and (2) 2" x 14" borders.
D	(1) Large Flame 2 Template. (2) Small Flame 2 Templates and (2) Small Flame 2 Templates reversed.
E	(5) 1-1/4" x 21" strips; sew ends of 3 strips together. Subcut (2) 1-1/4" x 24-1/2" strips and (4) 1-1/4" x 12-1/2" strips.
F	(2) 2" x 8-1/4" strips. (2) 2" x 7" strips. (2) 1-1/2" x 7" strips. (2) 4-1/2" x 5" rectangles. (2) 3-1/2" x 3-3/4" rectangles. (2) Triangle Templates and (2) Triangle Templates reversed
G	(2) 2" x 8-1/4" rectangles. (2) 2" x 7" rectangles. (1) Base Template.
H	(1) 4" x 7-3/4" rectangle. (2) Base Templates FOR BINDING: (5) 2-1/4" x 21" strips, sew short ends together.
	34" x 25" batting

ADDITIONAL MATERIALS

3/4 yards backing fabric
Thread to match fabrics
Basic sewing supplies
Template plastic

Sewing machine
Rotary cutter, ruler and mat

Optional: For turned under edge appliqué: freezer paper or other template paper.
For raw edge appliqué: paper backed fusible webbing.

SIDE BLOCKS

1. Sew (1) **F** 2" x 7" rectangle to side of (1) **G** 2" x 7" rectangle. Sew (1) **F** 1-1/2" x 7" rectangle to opposite side of **G** rectangle to make a short candle unit.
2. Sew (1) **F** 4-1/2" x 5" rectangle to top of short candle unit to make left side of block. Make 1.
3. Sew (1) **G** 2" x 8-1/4" rectangle to side of (1) **F** 2" x 8-1/4" rectangle to make a long candle unit.
4. Sew (1) **F** 3-1/2" x 3-3/4" rectangle to top of long candle unit to make right side of block. Make 1.
5. Sew together the left and right side of the block.
6. Sew (1) **F** Triangle Template and (1) **F** Triangle Template reversed to ends of (1) **H** Base Template. Sew to bottom of block. Make 1.

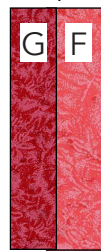
Step 1



Step 2



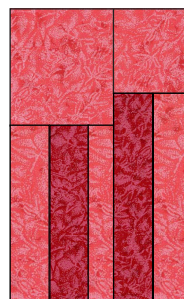
Step 3



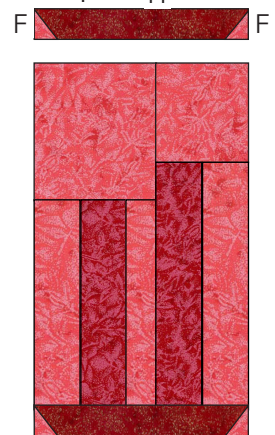
Step 4



Step 5



Step 6 H



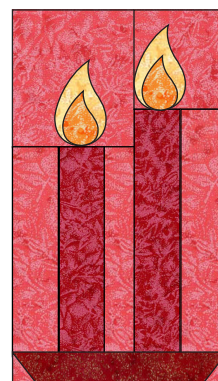
Make 1

7. Prepare (2) **A** Small Flame 1 Templates and (2) **D** Small Flame 2 Templates using your preferred appliqué method. Pin, baste or fuse the **A** Flame 1 pieces centered above the **G** rectangles. Sew the edges in place. Pin, baste or fuse the **D** Flame pieces to the **A** Flame pieces. Sew the edges in place to complete the left side block. Make 1.

8. Following steps 1-7, make right side block that is the reverse image of the left side block. Use (2) **A** Small Flame 1 Templates reversed and (2) **D** Small Flame 2 Templates reversed. Make 1.

Step 7

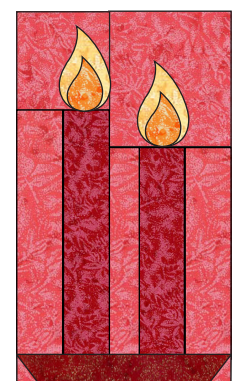
Left Side Block



Make 1

Step 8

Right Side Block



Make 1

CENTER BLOCK

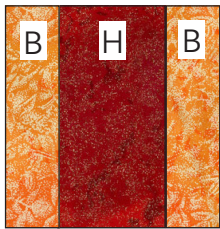
9. Sew (1) **B** 2-1/4" x 7-3/4" rectangle to each side of (1) **H** 4" x 7-3/4" rectangle to make a candle unit.

10. Sew (1) **B** 4-1/4" x 7-1/2" rectangle to top of candle unit.

11. Sew (1) **B** Triangle Template and (1) **B** Triangle Template reversed to ends of (1) **G** Base Template. Sew to bottom of block. Make 1.

12. Prepare (1) **A** Large Flame 1 Template and (1) **D** Large Flame 2 Template using your preferred appliqué method. Pin, baste or fuse the **A** Flame 1 piece centered above the **G** rectangles. Sew the edges in place. Pin, baste or fuse the **D** Flame piece to the **A** Flame piece. Sew the edges in place to complete the center block. Make 1.

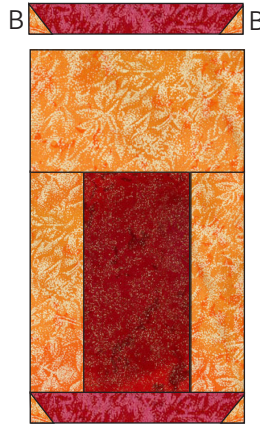
Step 7



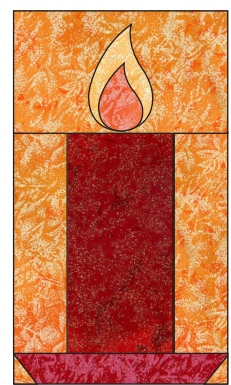
Step 8



Step 9
G



Step 10



Make 1

ASSEMBLY

13. Following the quilt layout on page 5, sew together (4) **E** 1-1/4" x 12-1/2" strips alternating with (1) left side block, (1) center block and (1) right side block.

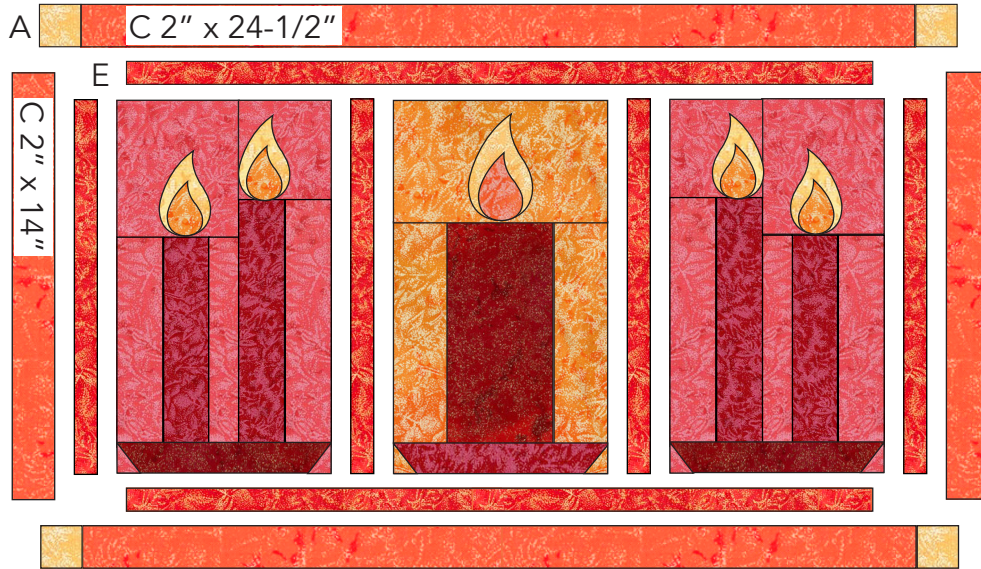
14. Sew (2) **E** 1-1/4" x 24-1/2" strips to top and bottom of quilt.

15. Sew (2) **C** 2" x 14" borders to sides of the quilt.

16. Sew (2) **A** 2" squares to ends of (2) **C** 2" x 24-1/2" borders. Sew to top and bottom of quilt.

Candlelight

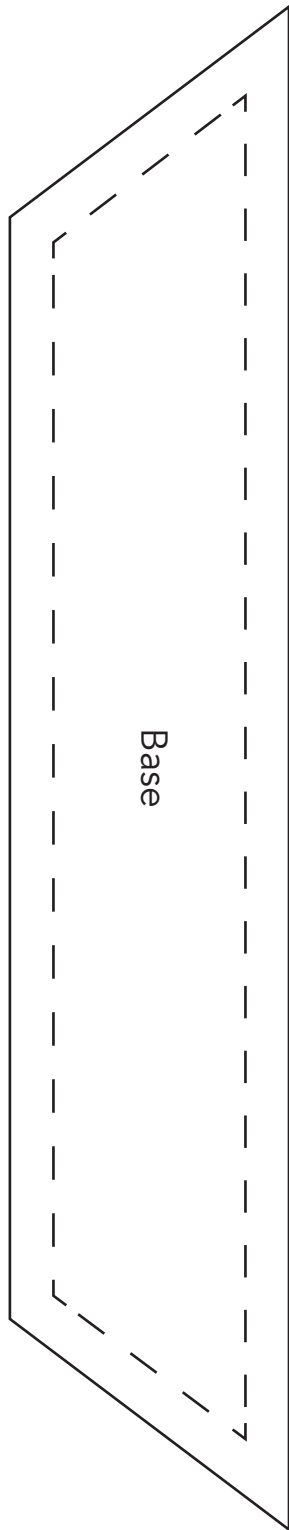
Quilt Layout



FINISHING: Layer quilt top, batting and backing together to form quilt sandwich. Baste and quilt as desired. Bind using (5) fabric **H** 2-1/4" strips.

Candlelight

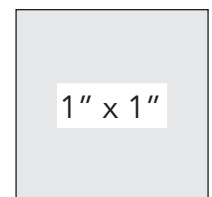
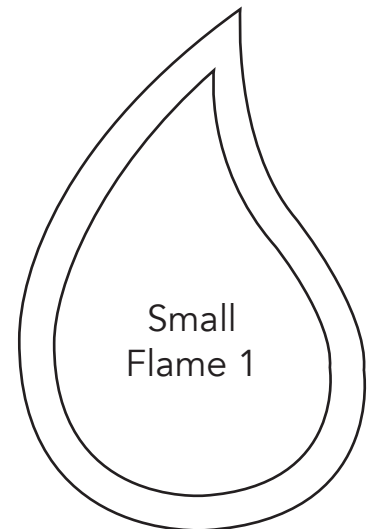
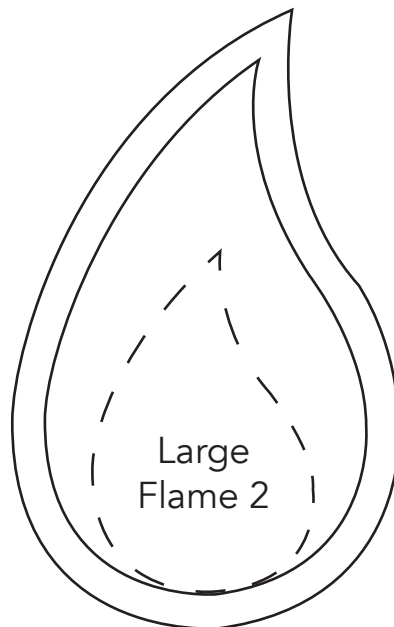
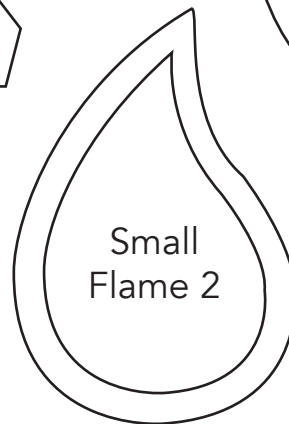
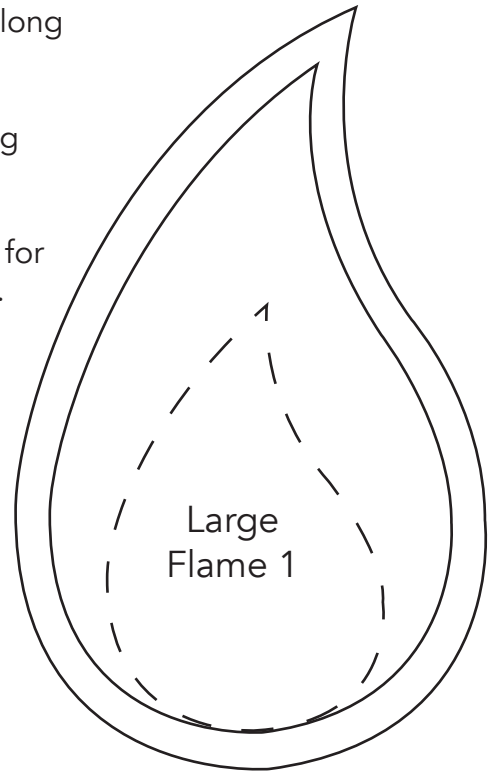
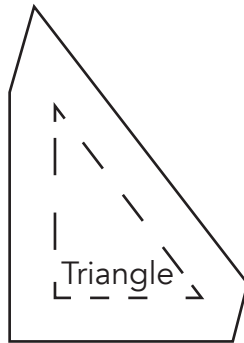
Templates



For turned-edge appliqué, cut along the solid outer line.

For raw-edge applique, cut along the solid inner line.

Broken lines indicate placement for Large and Small Frame 2 pieces.



Print at 100%.