

BARS AND STRIPES QUILT

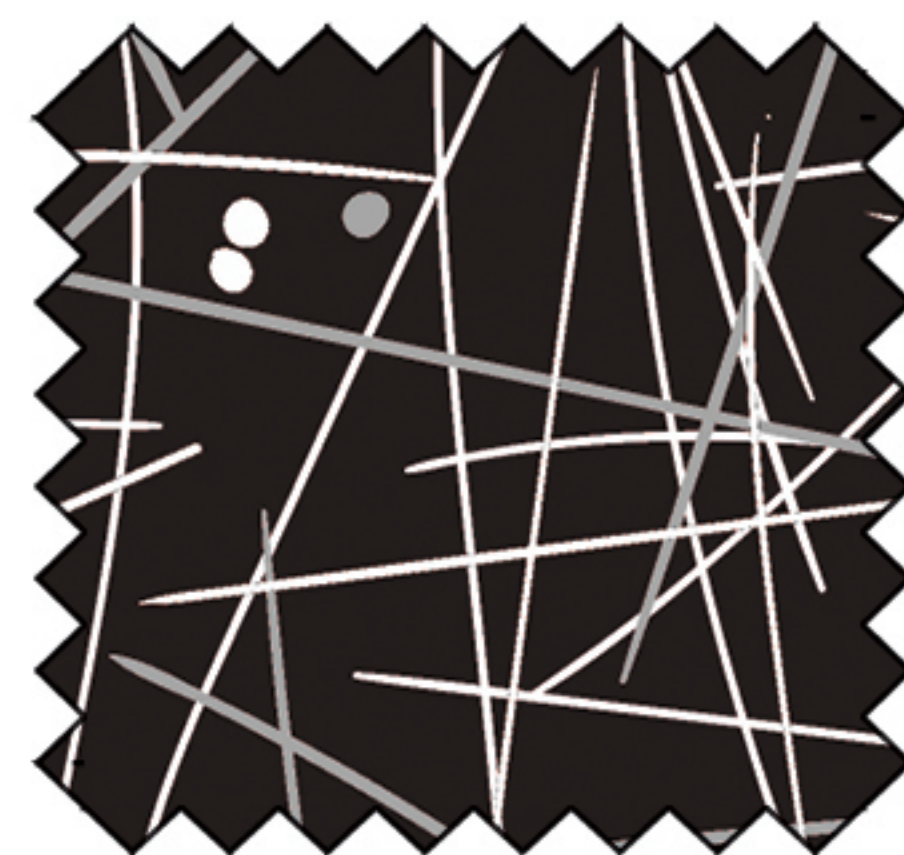
SIZE: 66"W X 80"H | LEVEL: BEGINNER | PATTERN BY: EVERYDAY STITCHES

COMMERCIAL PATTERN AVAILABLE AT WWW.EVERYDAYSTITCHES.COM, CHECKER DISTRIBUTORS & EE SCHENCK



FABRIC REQUIREMENTS FOR 1 KIT:

SKU	YARDAGE PER QUILT
DC11231-BLACK*	3 3/8 YARDS
DC11223-BEIGE	FAT QUARTER
DC11223-BLACK	FAT QUARTER
DC11224-BEIGE	FAT QUARTER
DC11224-BLACK	FAT QUARTER
DC11224-RED	FAT QUARTER
DC11225-MULTI	FAT QUARTER
DC11226-MULTI	FAT QUARTER
DC11227-RED	FAT QUARTER
DC11227-WHITE	FAT QUARTER
DC11228-BEIGE	FAT QUARTER
DC11228-BLACK	FAT QUARTER
DC11229-BLACK	FAT QUARTER
DC11229-RED	FAT QUARTER
DC11229-WHITE	FAT QUARTER
DC11231-BEIGE	FAT QUARTER
DC11230-MULTI**	5 1/3 YARDS



WIDE BACK

108 INCH WIDE BACK COTTON

PAIR OUR WIDE BACK
WBX8713-SWIZZLE STICK BLACK
 WITH THIS PROJECT! USE
2 1/4 YARDS FOR BACKING

*IMAGE SHOWN NOT TRUE TO SCALE

*INCLUDES BINDING | **BACKING

michael miller FABRICS

WWW.MICHAELMILLERFABRICS.COM

INFO@MICHAELMILLERFABRICS.COM | 212.704.0774