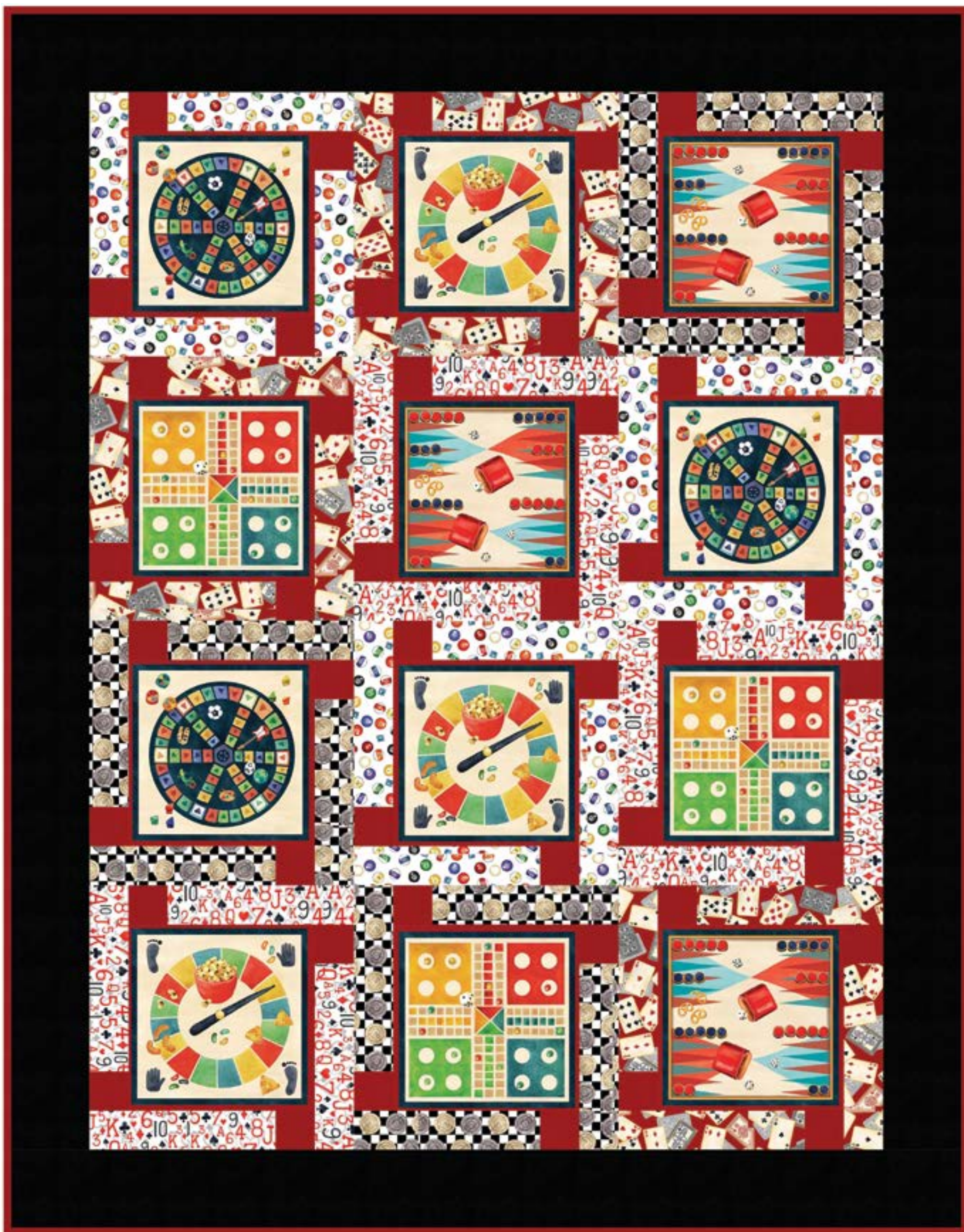
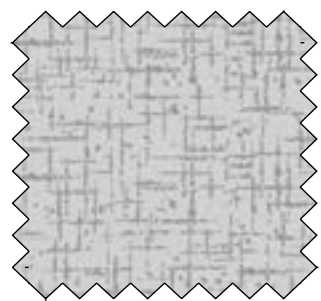


BLOCK TALK QUILT

SIZE: 48"W X 62"H | LEVEL: CONFIDENT BEGINNER | PATTERN BY: SWIRLY GIRLS DESIGN
 COMMERCIAL PATTERN AVAILABLE AT WWW.SWIRLYGIRLSDESIGN.COM & CHECKER DISTRIBUTORS



*THIS IS A DIGITAL REPRESENTATION OF THE QUILT TOP. FABRIC MAY VARY.



WIDE BACK

108 INCH WIDE BACK COTTON

PAIR OUR WIDE BACK
WBX9169-GRAY SISAL
 WITH THIS PROJECT! USE
2 YARDS FOR BACKING

*IMAGE SHOWN NOT TRUE TO SCALE

FABRIC REQUIREMENTS FOR 1 KIT:

SKU	YARDAGE PER QUILT
DC11557-MULTI	1 YARD (12 BLOCKS)
DC11555-WHITE	1/4 YARD
DC11548-RED	1/4 YARD
DC11552-BLACK	1/4 YARD
DC11549-WHITE	1/4 YARD
SC5333-BLACK	1/4 YARD
SC5333-PAPRIKA*	3/4 YARD
DC11554-WHITE**	3 YARDS

*INCLUDES BINDING

**BACKING