

STARS ALIGN QUILT

SIZE: 54"W X 72"H | LEVEL: CONFIDENT BEGINNER | PATTERN BY: MISS WINNIE DESIGNS



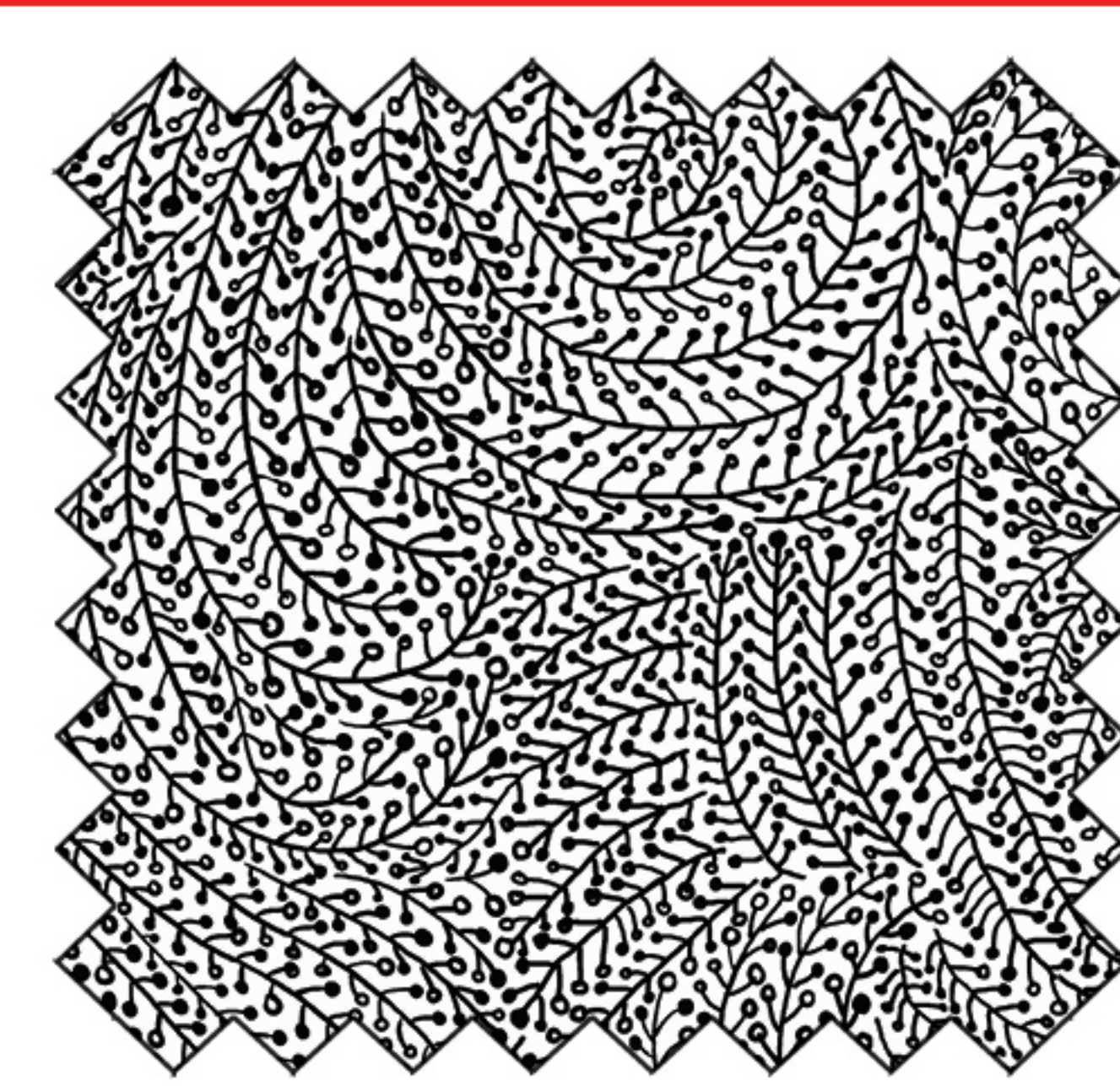
*THIS IS A DIGITAL REPRESENTATION OF THE QUILT TOP. FABRIC MAY VARY.

COMMERCIAL PATTERN AVAILABLE AT WWW.MISSWINNIEDESIGNS.CA & CHECKER DISTRIBUTORS

FABRIC REQUIREMENTS FOR 1 KIT:

SKU	YARDAGE PER QUILT
DG11097-BLACK	1 PANEL
DG11098-BLACK	3/4 YARD
DG11099-FRESH	1/4 YARD
DG11099-BLACK	1 1/2 YARDS
DC11101-WHITE	1 1/8 YARDS
DG11099-GOLD	3/8 YARD
DG11102-BLACK*	5/8 YARD
DC11100-BLACK**	3 1/2 YARDS

*INCLUDES BINDING
**BACKING



WIDE BACK

108 INCH WIDE BACK COTTON

PAIR OUR WIDE BACK
WBX6774-BLACK VINE MAZE
WITH THIS PROJECT! USE
2 YARDS FOR BACKING

*IMAGE SHOWN NOT TRUE TO SCALE

michael miller FABRICS

WWW.MICHAELMILLERFABRICS.COM | INFO@MICHAELMILLERFABRICS.COM | 212.704.0774