

# GNOME MOBILE QUILT

SIZE: 57"W X 69"H | LEVEL: CONFIDENT BEGINNER | PATTERN BY: PROJECT HOUSE 360



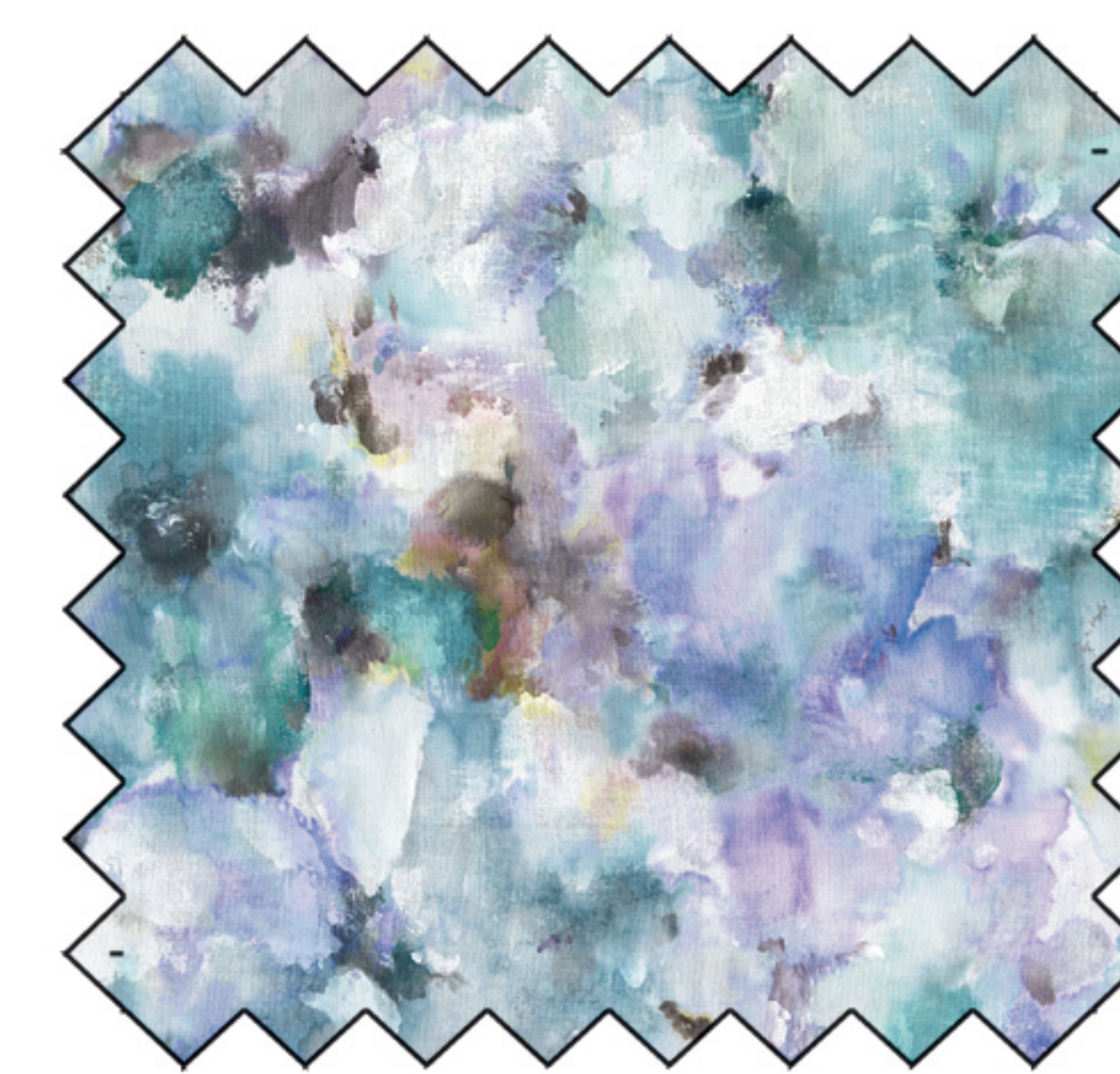
\*THIS IS A DIGITAL REPRESENTATION OF THE QUILT TOP. FABRIC MAY VARY.

FREE PATTERN WILL BE AVAILABLE AT [WWW.MICHAELMILLERFABRICS.COM](http://WWW.MICHAELMILLERFABRICS.COM)

### FABRIC REQUIREMENTS FOR 1 KIT:

| SKU                | YARDAGE PER QUILT |
|--------------------|-------------------|
| CX2490 - SNOWDROP  | 1 1/8 YARDS       |
| SC5333 - BOY       | 7/8 YARDS         |
| DC11238 - MULTI    | 3/4 YARDS         |
| DDC11237 - BLUE    | 5/8 YARDS         |
| SC5333 - CELERY    | 1/4 YARDS         |
| DDC11239 - MULTI   | 1 1/3 YARDS       |
| DDC11232 -BLUE     | 3/8 YARDS         |
| DDC11237 - BROWN   | 5/8 YARDS         |
| DDC11236 - WHITE   | 1/4 YARDS         |
| DDC11235 - MULTI   | 1 7/8 YARDS       |
| DDC11234 - MULTI*  | 5/8 YARDS         |
| DDC11236 - GREEN** | 3 3/4 YARDS       |

\*INCLUDES BINDING  
\*\*BACKING



### WIDE BACK

108 INCH WIDE BACK COTTON

PAIR OUR WIDE BACK  
**WBX9414-BLUE WATERCOLORS**  
WITH THIS PROJECT! USE  
**2 YARDS** FOR BACKING

\*IMAGE SHOWN NOT TRUE TO SCALE

michael miller FABRICS

[WWW.MICHAELMILLERFABRICS.COM](http://WWW.MICHAELMILLERFABRICS.COM) | [INFO@MICHAELMILLERFABRICS.COM](mailto:INFO@MICHAELMILLERFABRICS.COM)