

michael miller FABRICS

Basketry

SIZE: 38"Wx 44"H • LEVEL: Intermediate • PATTERN BY: Project House 360 • From Africa by Louise Nisbet



PLEASE NOTE: THIS PATTERN HAS BEEN THROUGH OUR TECHNICAL EDITING PROCESS. HOWEVER, BEFORE BEGINNING YOUR PROJECT, CHECK FOR ANY PATTERN UPDATES AT MICHAELMILLERFABRICS.COM IN THE FREE DOWNLOAD SECTION.

THIS IS A DIGITAL REPRESENTATION OF THE QUILT TOP, FABRIC MAY VARY.
p.212.704.0774 | info@michaelmillerfabrics.com | www.michaelmillerfabrics.com

Basketry

Note: Fabric swatches are not to scale, they are for identification purposes only.



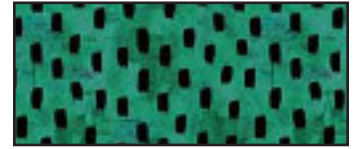
FABRIC A
DDC1073 multi
3/8 yard



FABRIC B
K1002
7/8 yard



FABRIC C
SC5333 black
3/8 yard



FABRIC D
DC10771 jade
3/8 yard



FABRIC E
DC10770 gold
1/8 yard



FABRIC F
DDC10772 tan
1/8 yard



FABRIC G
DDC10774 multi
1 3/8 yards



FABRIC H
DDC10767 black
1/4 yard



FABRIC I
DDC10766 gold
1/4 yard



FABRIC J
DDC10768 jade
1/4 yard



FABRIC K
DC10771 gold
3/8 yard



FABRIC L
DC10770 beige
1/2 yard

Backing: 2 yards

Batting: 46" x 52"

1/4" Seam Allowance Check

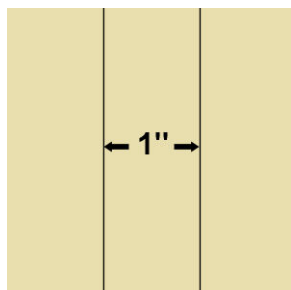
To check if your seam is accurate, cut three 1 1/2" x 3" pieces from scrap fabric.

Sew the pieces together along the 3" side, using what you believe is a 1/4" seam.

Press away from the center piece.

Measure.

The center piece should be exactly 1" wide.



If, when you measure, the center is less than 1", your seam allowance is too large. You need to move the needle to the right.

If it's more than 1", your seam allowance is too small and you need to move the needle to the left.

Consult your machine's owner's manual for instructions on moving your needle position.

Repeat this check until your center strip measures correctly.

Basketry

KEY	CUTTING INSTRUCTIONS	WOF = width of fabric
A	(1) 7¼" x 31½" rectangle	
B	(1) 15" x 33" rectangle (7) template B (7) template B (reversed)	
C	(1) 2½" x WOF strip. Subcut: (4) 2½" squares and (4) 2" squares Appliques: (1) each of numbers 2, 4, 6, 8, 9, 10, 11	
D	Appliques: (1) each of numbers 5, 7	
E	(1) applique 1	
F	(1) applique 3	
G	(2) 3½" x 48" fussy cut, centered on the jade stripe. (2) 3½" x 43" fussy cut, centered on the jade stripe. (2) 2½" x 31½" fussy cut, on the pottery strip (this will not be centered on the pottery motif) (2) 2½" x 20½" fussy cut, on the mask strip (this will not be centered on the mask motif)	
H	(3) template A	
I	(2) template A	
J	(2) template A	
K	(4) 2" x WOF strips. Subcut: (2) 2" x 29½" and (2) 2" x 35½"	
L	(5) 2½" x WOF strips for binding	

Blocks:

Make 7

1. Stitch one fabric B template B and one fabric B template B (reversed) to one fabric H template A. Square to 5½". Make three blocks.
2. Use the same method to make the following blocks using fabrics I and J template A pieces.



Make 3



Make 2



Make 2

Applique:

3. Prepare appliques using your favorite method. (appliques are NOT reversed)
4. Arrange appliques as indicated on the applique sheet and center on the fabric B 15" x 33" rectangles. Stitch in place. Trim to 13¾" x 31½".



Assembly:

5. Stitch the fabric A 7¼" x 31½" rectangle to the left side of the applique block.
6. Stitch the fabric G 2½" x 31½" pottery strips to the left and right sides of the block.
7. Stitch one fabric C 2½" square to each end of the two fabric G 2½" x 20½" mask strips. Add to the top and bottom of the quilt.
8. Stitch the blocks together as shown in the assembly diagram on page 5, then stitch the block strip to the right side of the quilt.
9. Stitch the fabric K 2" x 35½" strips to the left and right sides of the quilt.
10. Stitch one fabric C 2" square to each end of the two fabric K 2" x 29½" strips. Add to the top and bottom of the quilt.

11. Stitch the fabric G 3½" x 48" jade strips to the left and right side of the quilt, preparing to miter corners.
12. Stitch the fabric G 3½" x 43" jade strips to the top and bottom of the quilt, mitering corners.

Assembly Diagram

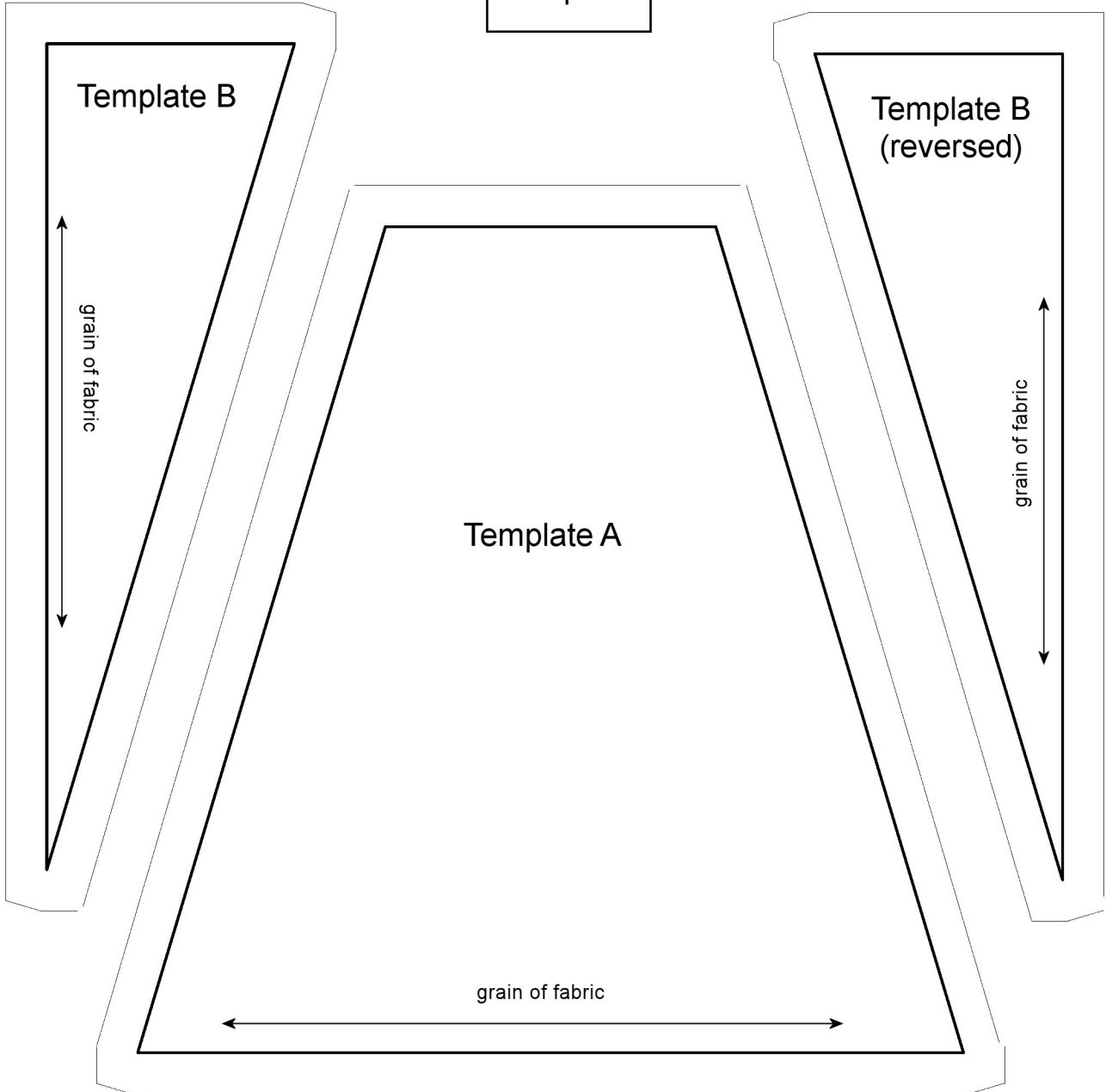


Finishing:

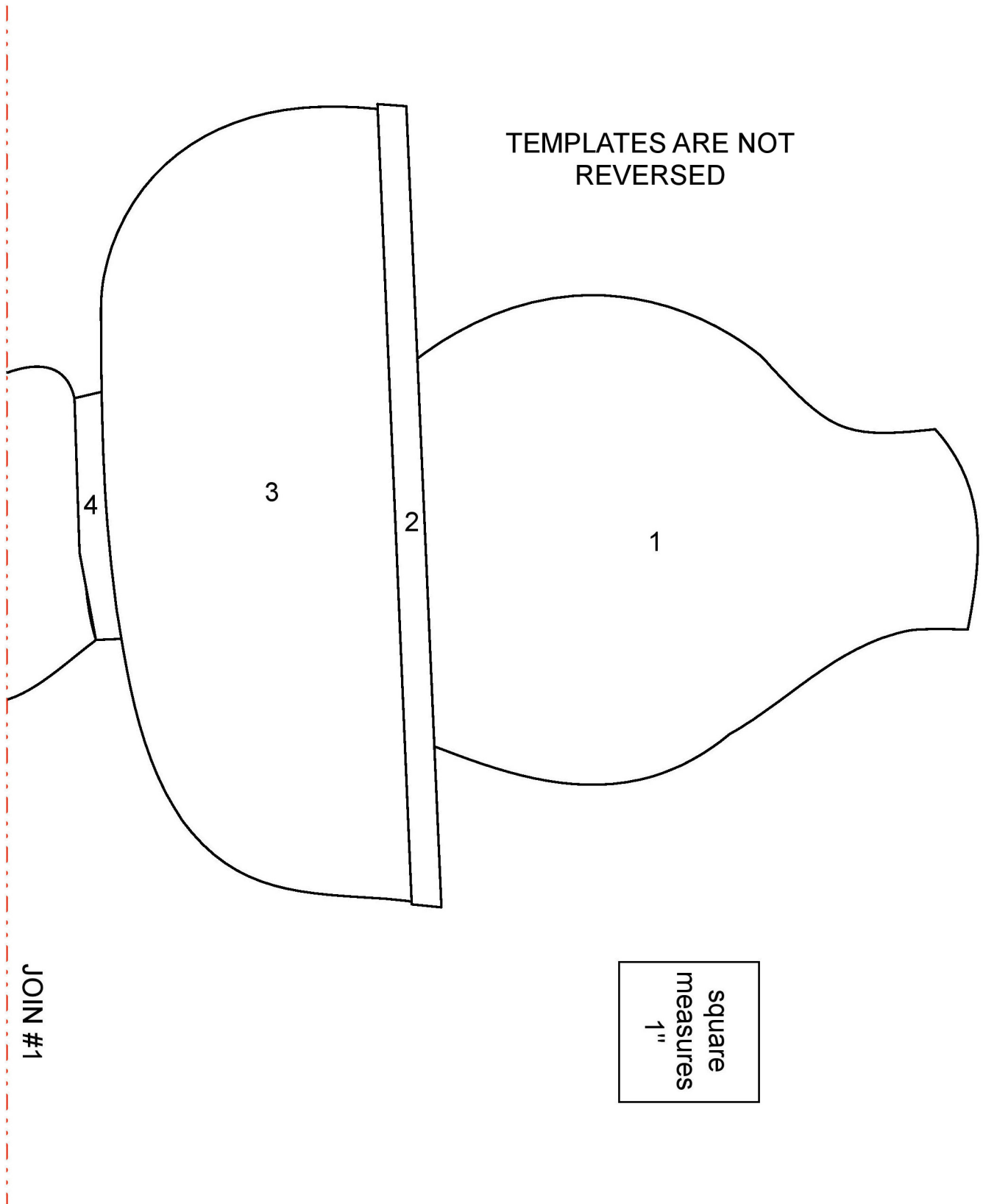
13. Layer, baste and quilt as desired.
14. Bind with five fabric L 2½" x WOF strips.

Basketry

square
measures
1"



Basketry

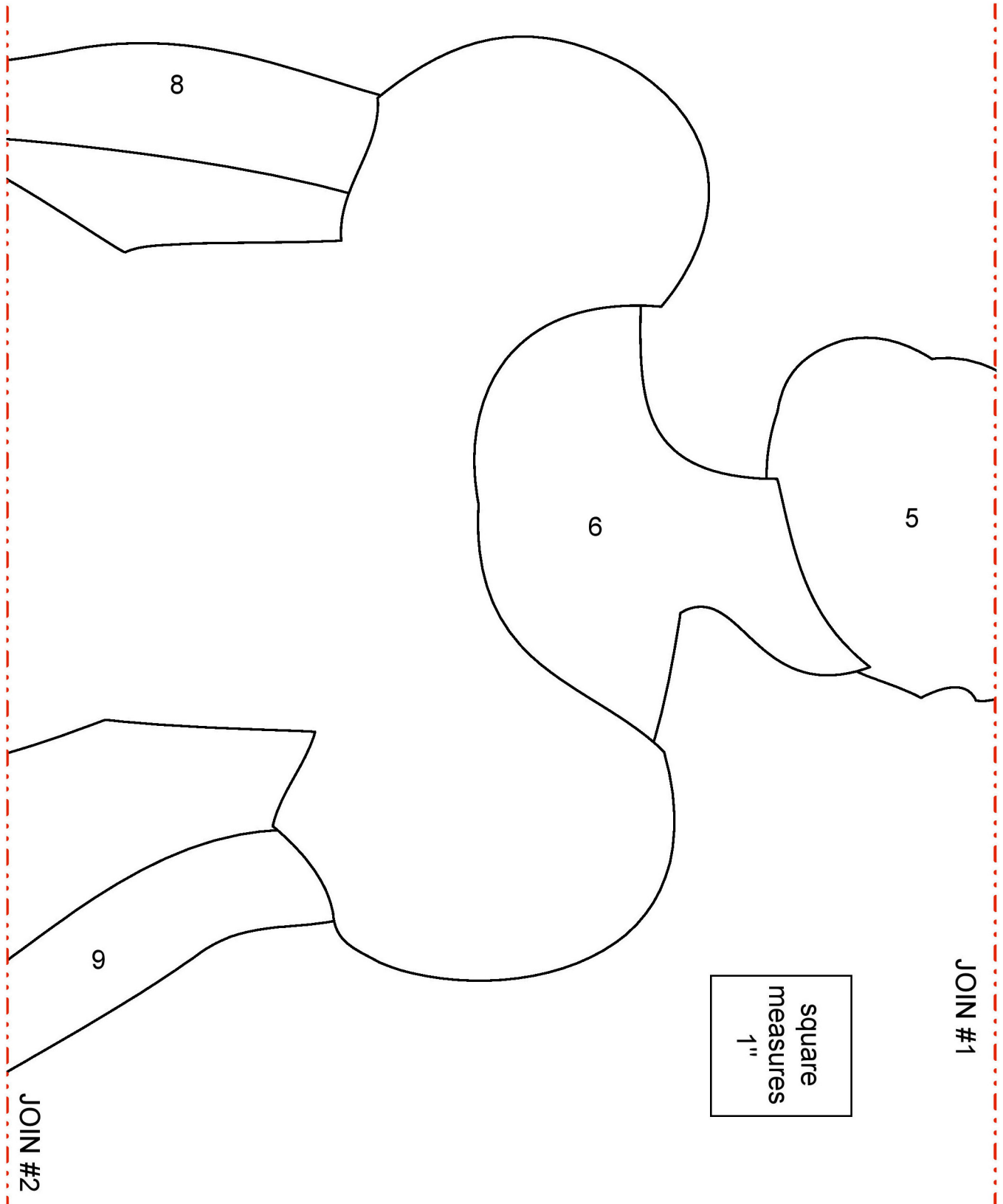


TEMPLATES ARE NOT
REVERSED

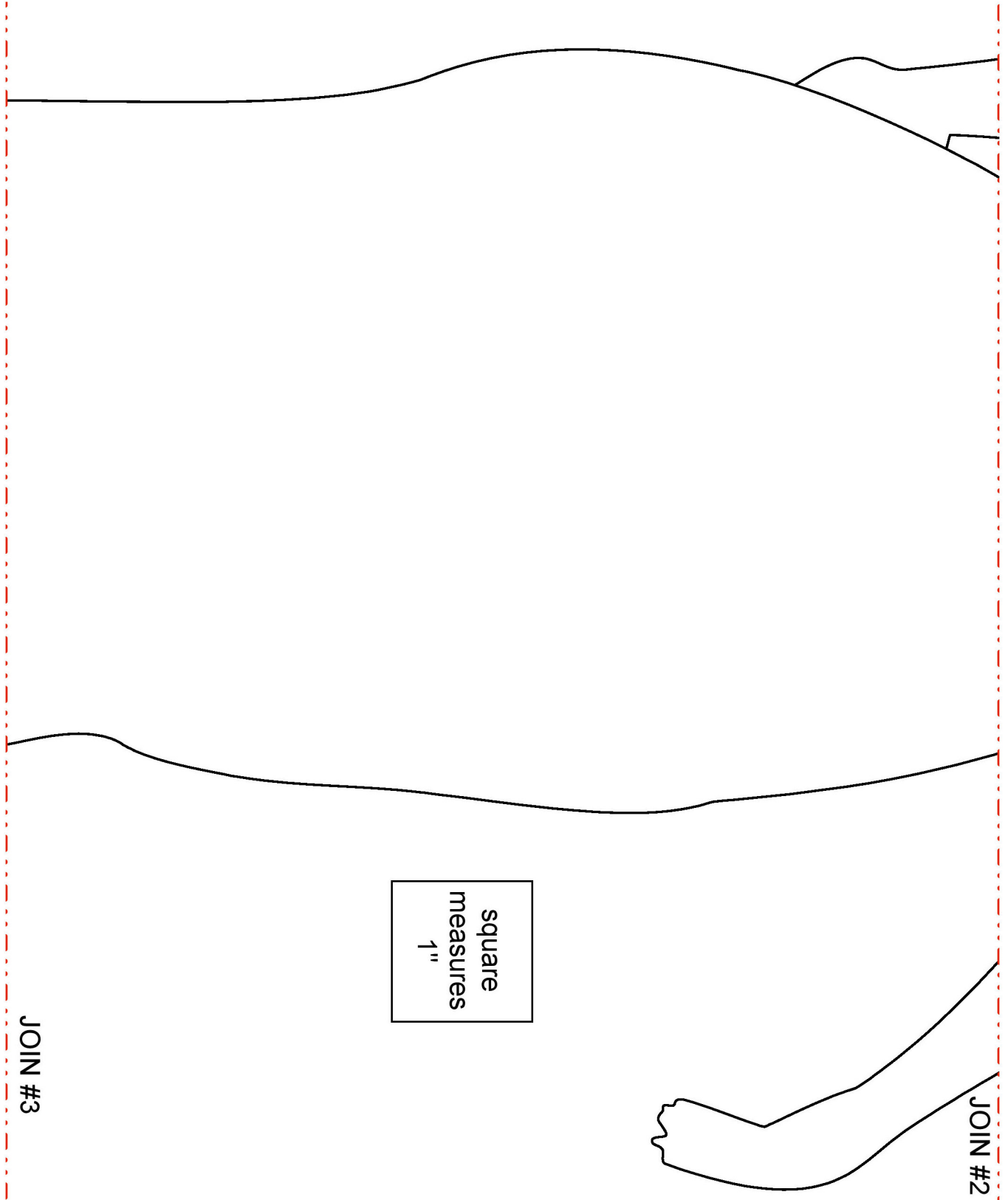
JOIN #1

square
measures
1"

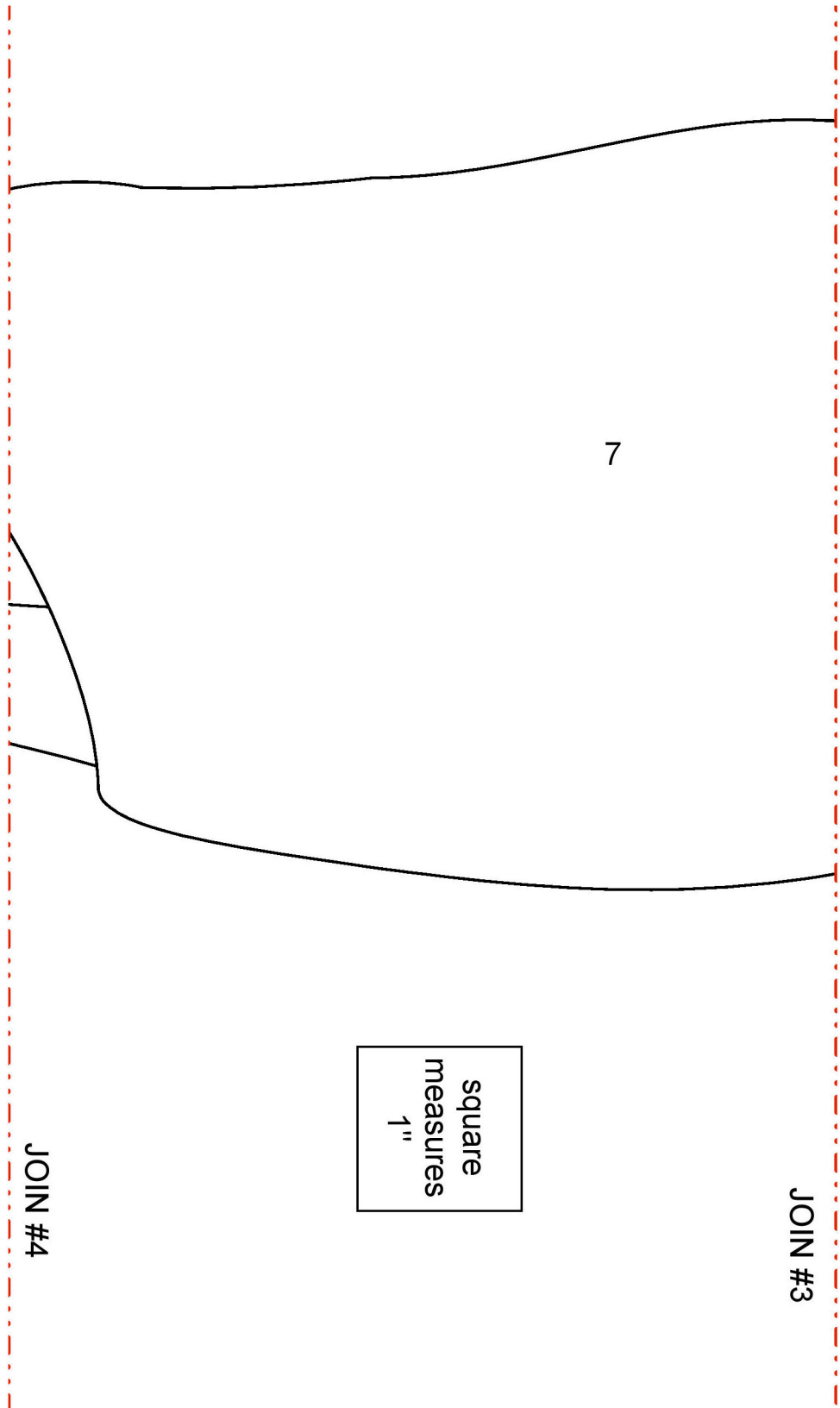
Basketry



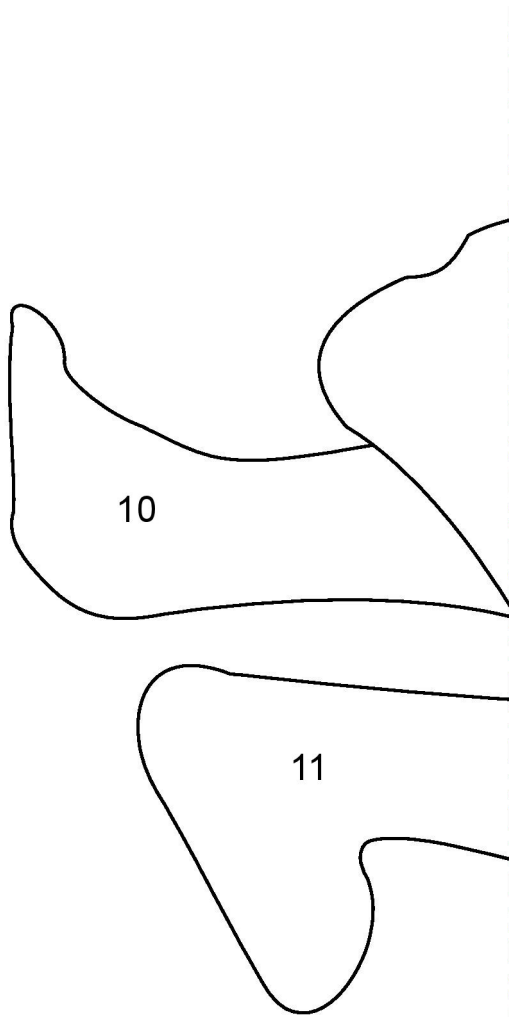
Basketry



Basketry



Basketry



square
measures
1"

JOIN #4