

BEHIND THE SCENES QUILT

SIZE: 46"W X 64"H | LEVEL: CONFIDENT BEGINNER | PATTERN BY: SWIRLY GIRLS DESIGN



*THIS IS A DIGITAL REPRESENTATION OF THE QUILT TOP. FABRIC MAY VARY.

COMMERCIAL PATTERN AVAILABLE AT WWW.SWIRLYGIRLSDESIGN.COM

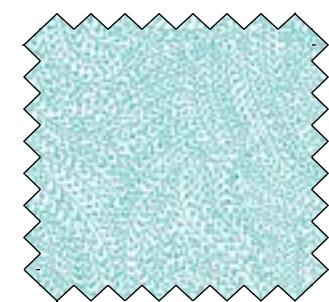
FABRIC REQUIREMENTS FOR 1 KIT:

| SKU | YARDAGE PER QUILT | # OF BOLTS FOR 12 KITS |
|----------------|-------------------|------------------------|
| DCX11104-CREAM | 1 7/8 YARDS | 2 BOLTS (22 1/2 YARDS) |
| CX11109-LIME | 1 FAT QUARTER | 1 BOLT (3 YARDS) |
| CX11109-BLUE* | 1 YARD | 1 BOLT (12 YARDS) |
| CX11107-AQUA | 1 FAT QUARTER | 1 BOLT (3 YARDS) |
| CX11107-YELLOW | 1 FAT QUARTER | 1 BOLT (3 YARDS) |
| CX11108-LIME | 1 FAT QUARTER | 1 BOLT (3 YARDS) |
| CX11106-AQUA** | 3 YARDS | 3 BOLTS (36 YARDS) |

TOTAL # OF BOLTS: 10 BOLTS (7 W/O BACKING)

*INCLUDES BINDING

**BACKING



WIDE BACK

108 INCH WIDE BACK COTTON

PAIR OUR WIDE BACK
WBX6774-AQUA VINE MAZE

WITH THIS PROJECT! USE

1 1/2 YARDS FOR BACKING

*IMAGE SHOWN NOT TRUE TO SCALE

michael miller FABRICS

118 WEST 22ND STREET | 5TH FLOOR | NEW YORK CITY, NY 10011 | 212.704.0774
MICHAELMILLERFABRICS.COM | INFO@MICHAELMILLERFABRICS.COM