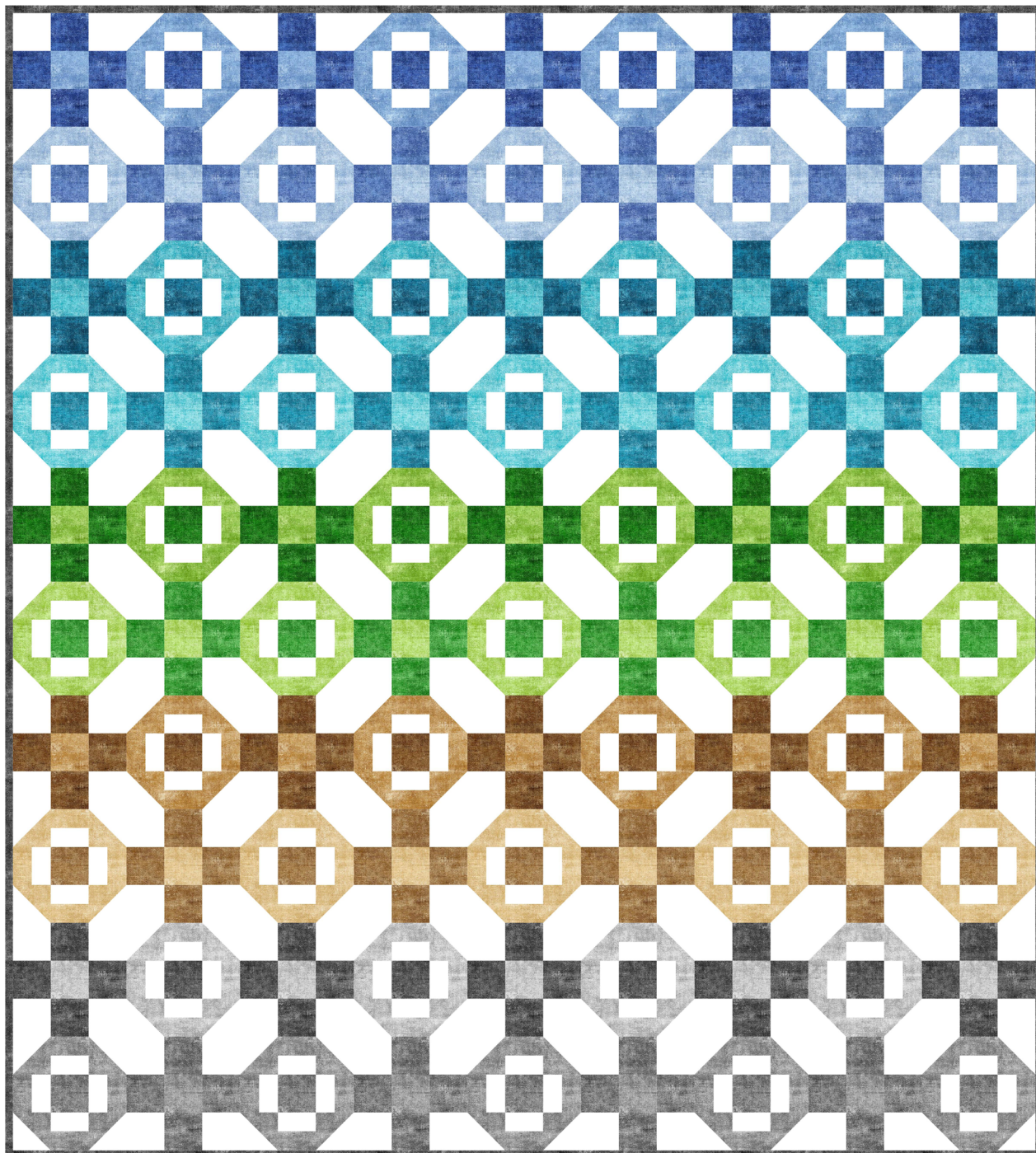


# MONKEY BARS

SIZE: 67 1/2"W x 75"H • LEVEL: BEGINNER • PATTERN BY: NATALIE CRABTREE • FRESCO FABRIC COLLECTION  
PATTERN AVAILABLE ON: [WWW.MICHAELMILLERFABRICS.COM](http://WWW.MICHAELMILLERFABRICS.COM)



Cool Colorway

THIS IS A DIGITAL REPRESENTATION OF THE QUILT TOP, FABRIC MAY VARY.

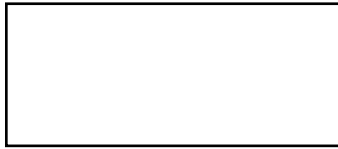
**PLEASE NOTE:** BEFORE BEGINNING YOUR PROJECT, CHECK FOR ANY PATTERN UPDATES AT [MICHAELMILLERFABRICS.COM](http://MICHAELMILLERFABRICS.COM)'S FREE PROJECTS SECTION.

p.212.704.0774 | [info@michaelmillerfabrics.com](mailto:info@michaelmillerfabrics.com) | [www.michaelmillerfabrics.com](http://www.michaelmillerfabrics.com)



# MONKEY BARS

**Designer Note:** It is recommended to label Fat Quarters with their assigned name (*Fabric B, C, D, etc.*) before beginning to eliminate confusion. Some fabrics are very close in color. For additional assistance, you may opt to tape a swatch of actual fabric overtop the printed sku image. Use this page as a fabric guide. Fat Quarters from Fabrics B-U are included in the Fresco Rainforest Fat Quarter Bundle.



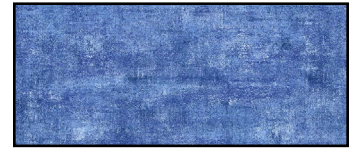
**FABRIC A**  
Cotton Couture  
SC\_5333 Bright White  
2 ¾ yards



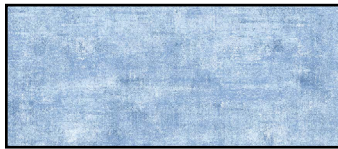
**FABRIC B**  
DCX10060 Fresco  
Sapphire  
1 FQ



**FABRIC C**  
DCX10060 Fresco  
Sky  
1 FQ



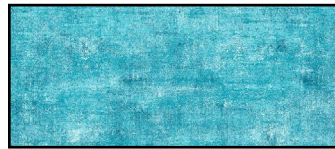
**FABRIC D**  
DCX10060 Fresco  
Cornflower  
1 FQ



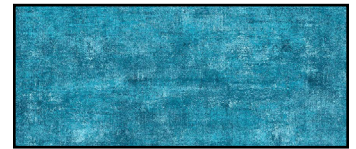
**FABRIC E**  
DCX10060 Fresco  
Ice  
1 FQ



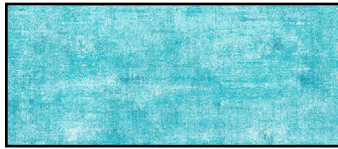
**FABRIC F**  
DCX10060 Fresco  
Turquoise  
1 FQ



**FABRIC G**  
DCX10060 Fresco  
Capri  
1 FQ



**FABRIC H**  
DCX10060 Fresco  
Aquamarine  
1 FQ



**FABRIC I**  
DCX10060 Fresco  
Powder  
1 FQ



**FABRIC J**  
DCX10060 Fresco  
Emerald  
1 FQ



**FABRIC K**  
DCX10060 Fresco  
Pear  
1 FQ



**FABRIC L**  
DCX10060 Fresco  
Kelly  
1 FQ



**FABRIC M**  
DCX10060 Fresco  
Lime  
1 FQ



**FABRIC N**  
DCX10060 Fresco  
Caramel  
1 FQ



**FABRIC O**  
DCX10060 Fresco  
Tan  
1 FQ

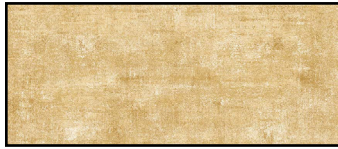


**FABRIC P**  
DCX10060 Fresco  
Almond  
1 FQ

Fabric Requirements Continued on Page 2

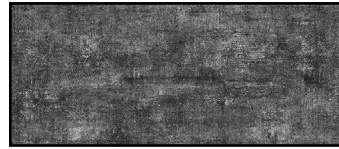


# MONKEY BARS



**FABRIC Q**

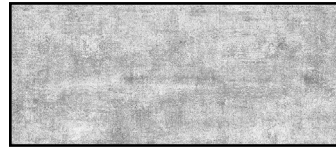
DCX10060 Fresco  
Parchment  
1 FQ



**FABRIC R**

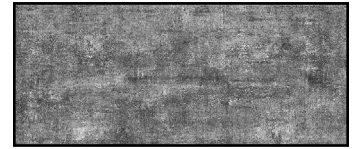
DCX10060 Fresco  
Charcoal  
1 FQ

+ 3/4 yard for binding



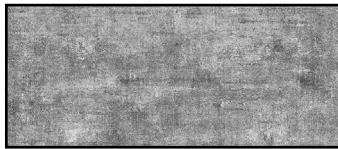
**FABRIC S**

DCX10060 Fresco  
Cloud  
1 FQ



**FABRIC T**

DCX10060 Fresco  
Steel  
1 FQ



**FABRIC U**

DCX10060 Fresco  
Silver  
1 FQ

**ADDITIONAL SUPPLIES NEEDED**

**BACKING:** 4 1/4 yards

**BATTING:** 76" x 83"

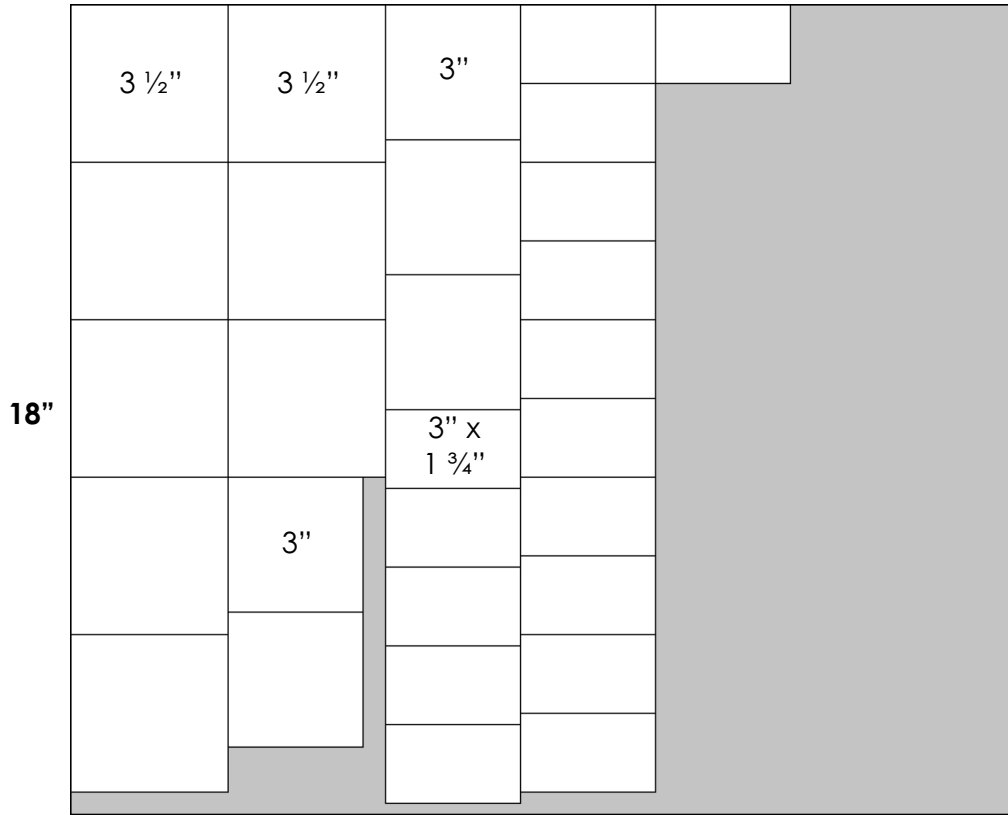
KEY	CUTTING INTRUCTIONS
<b>A</b>	<ul style="list-style-type: none"> <li>• Cut (8) 3 1/2" x WOF strips. Subcut (90) 3 1/2" squares.</li> <li>• Cut (22) 3" x WOF strips. Subcut the following:               <ul style="list-style-type: none"> <li>○ (180) 3" squares.</li> <li>○ (180) 3" x 1 3/4" rectangles.</li> </ul> </li> </ul>
<b>B, F, J, N, and R</b>	<ul style="list-style-type: none"> <li>• Cut (24) 3" squares.</li> </ul>
<b>D, H, L, P and T</b>	<ul style="list-style-type: none"> <li>• Cut (21) 3" squares.</li> </ul>
<b>C, G, K, O and S</b>	<p><b>Use Cutting Chart A as a reference (on page 3):</b></p> <ul style="list-style-type: none"> <li>• Cut (8) 3 1/2" squares.</li> <li>• Cut (5) 3" squares.</li> <li>• Cut (16) 3" x 1 3/4" rectangles.</li> </ul>
<b>E, I, M, Q and U</b>	<p><b>Use Cutting Chart B as a reference (on page 3):</b></p> <ul style="list-style-type: none"> <li>• Cut (10) 3 1/2" squares.</li> <li>• Cut (4) 3" squares.</li> <li>• Cut (20) 3" x 1 3/4" rectangles.</li> </ul>
<b>Binding</b>	<ul style="list-style-type: none"> <li>• Cut (8) 2 1/4" x WOF strips for binding.</li> </ul>



# MONKEY BARS

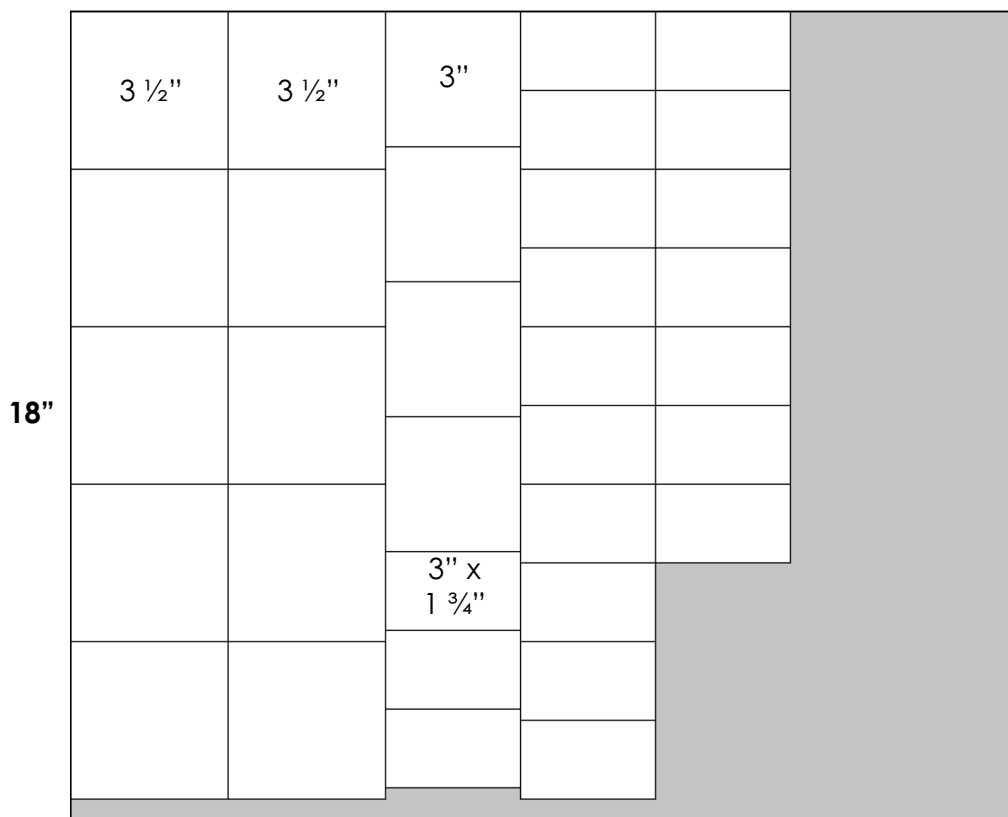
Cutting Chart A

21"



Cutting Chart B

21"





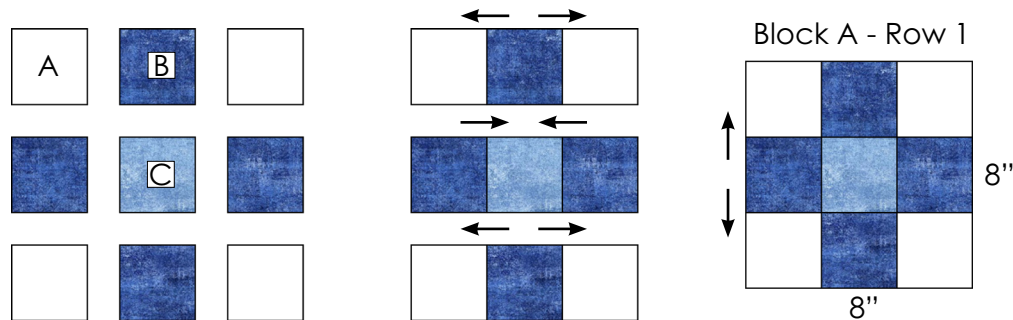
# MONKEY BARS

## Piecing Instructions:

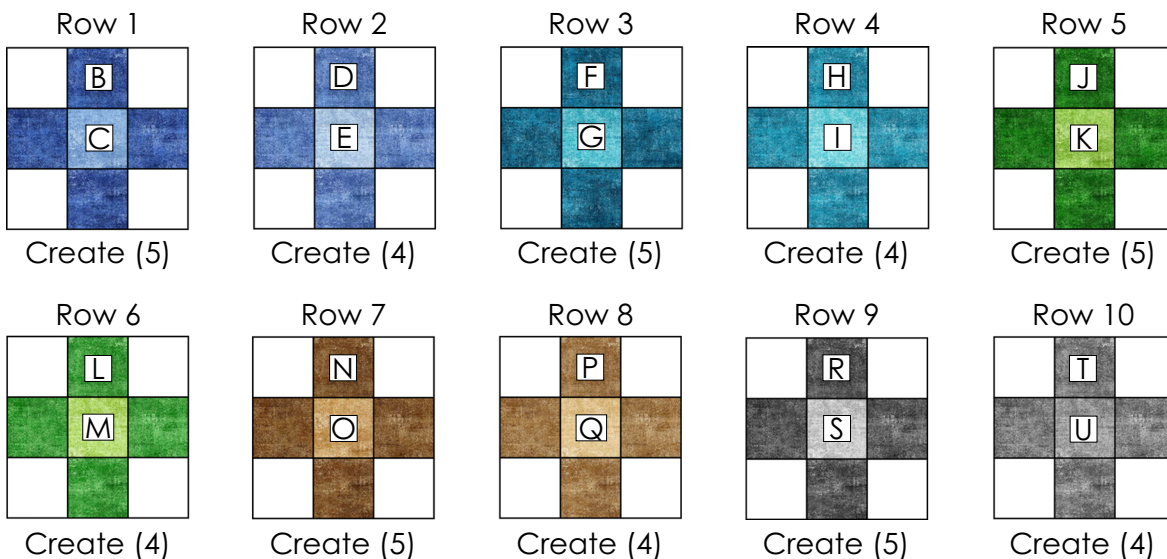
### Block A Assembly:

**Designer Note:** Assembly instructions describe how to make Block A for Row 1. Reference diagrams in Step 4 to create Block A in (9) additional colorways. To avoid confusion, label each Block A with the Row number indicated, Rows 1-10. It is recommended to complete blocks for (1) row at a time to eliminate confusion.

1. Arrange (4) 3" Fabric A squares, (4) 3" Fabric B squares and (1) 3" Fabric C square in a 9-patch as shown.
2. Sew the squares together. Press seams toward Fabrics A and C, and the top and bottom rows as indicated with arrows in the diagram. Once complete, Block A should measure 8" x 8" unfinished.
3. Repeat to create (5) Block A using Fabrics B and C for Row 1. (All Block A colorways will consistently use Fabric A.)



4. Repeat Block A assembly and pressing instructions. Use the following guide and diagrams to create (9) additional Block A colorways in the correct quantity and fabric combinations listed.
  - a. Row 2: Create (4) with Fabrics D & E.
  - b. Row 3: Create (5) with Fabrics F & G.
  - c. Row 4: Create (4) with Fabrics H & I.
  - d. Row 5: Create (5) with Fabrics J & K.
  - e. Row 6: Create (4) with Fabrics L & M.
  - f. Row 7: Create (5) with Fabrics N & O.
  - g. Row 8: Create (4) with Fabrics P & Q.
  - h. Row 9: Create (5) with Fabrics R & S.
  - i. Row 10: Create (4) with Fabrics T & U.

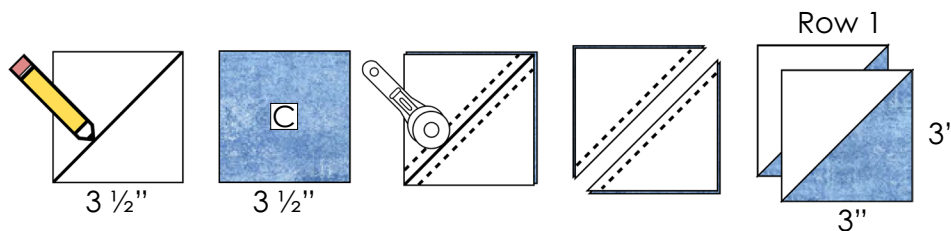


# MONKEY BARS

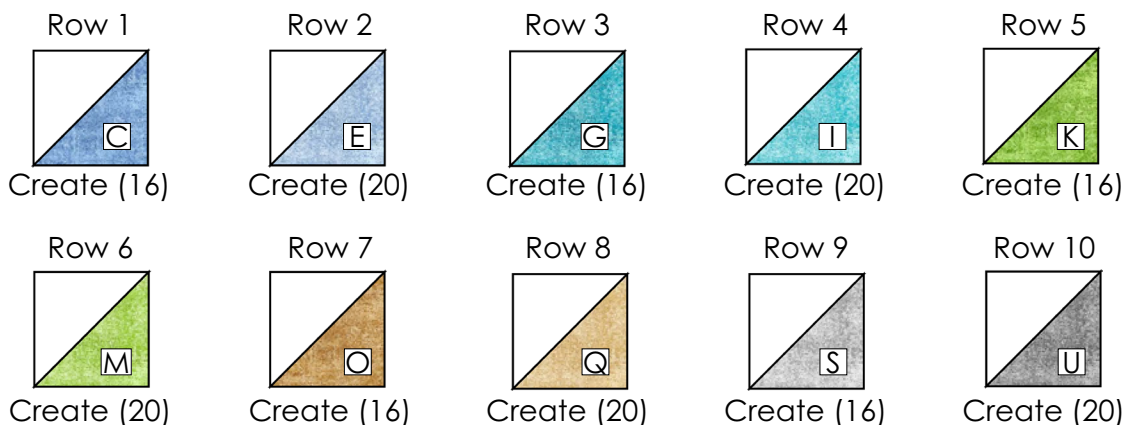
## Block B Assembly:

**Designer Note:** Assembly instructions describe how to make Block B for Row 1. Reference diagrams in Steps 10 and 14 to create Block B in (9) additional colorways. To avoid confusion, label each Block B with the Row number indicated, Rows 1-10. It is recommended to complete blocks for (1) row at a time to eliminate confusion.

5. Draw a diagonal line on the wrong side of (90) 3 1/2" Fabric A squares. Use (8) squares for Step 6, and the remaining squares for Step 10.
6. Place (1) 3 1/2" Fabric A square with (8) 3 1/2" Fabric C squares, RST and edges aligned.
7. Sew a 1/4" away from either side of the drawn diagonal line on each set of squares.
8. Cut along the drawn diagonal line on each set of squares, creating a total of (16) HST units.
9. Trim HST units to measure 3" x 3" unfinished. A/C HST units will be used in Row 1.

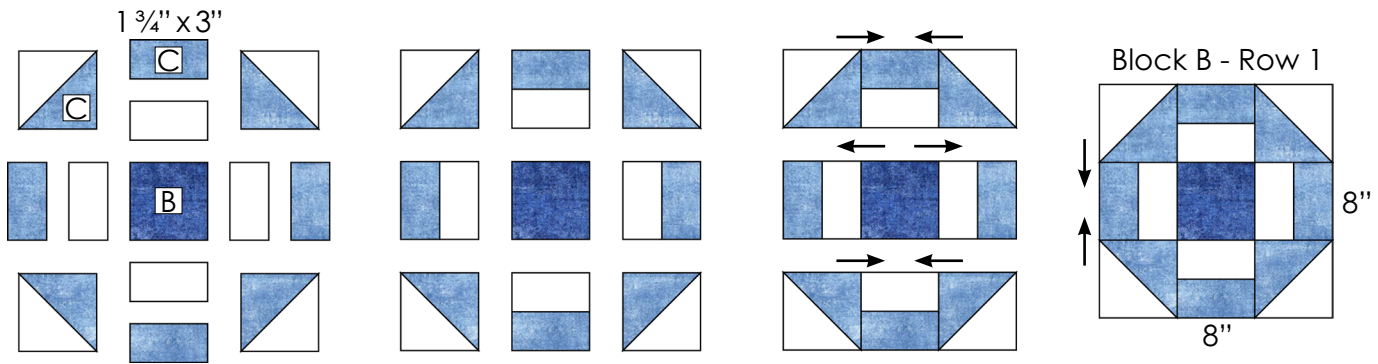


10. Repeat HST unit assembly instructions. Use the following guide and diagrams to create (9) additional HST unit colorways in the correct quantity. Each HST unit will consistently use Fabric A.
  - a. Row 2: Create (20) with Fabric E.
  - b. Row 3: Create (16) with Fabric G.
  - c. Row 4: Create (20) with Fabric I.
  - d. Row 5: Create (16) with Fabric K.
  - e. Row 6: Create (20) with Fabric M.
  - f. Row 7: Create (16) with Fabric O.
  - g. Row 8: Create (20) with Fabric Q.
  - h. Row 9: Create (16) with Fabric S.
  - i. Row 10: Create (20) with Fabric U.



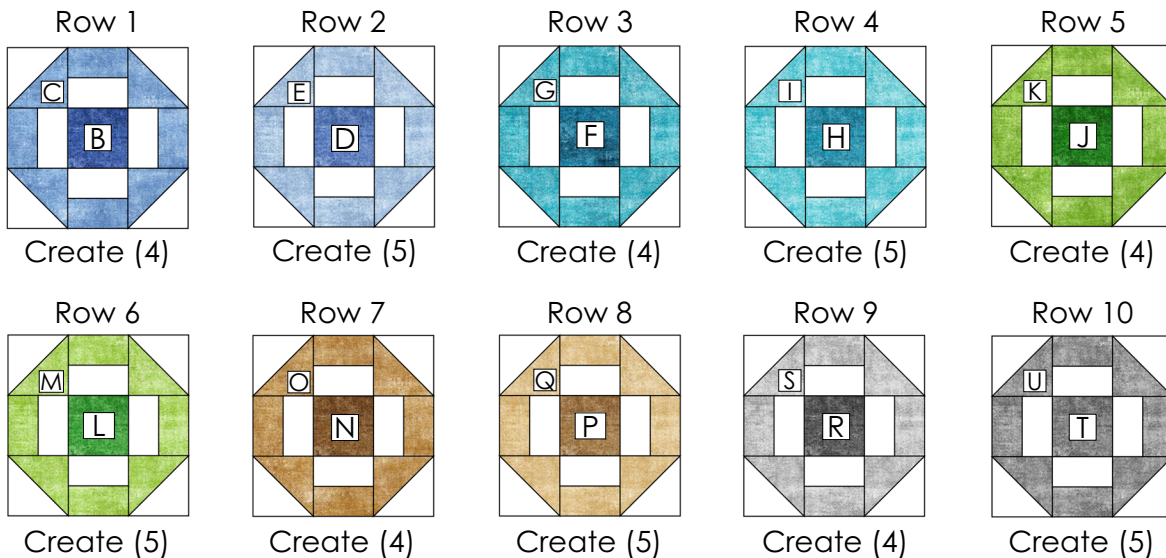
11. Arrange (4) A/C HST units, (1) 3" Fabric B square, (4) 1 3/4" x 3" Fabric A rectangles and (4) 1 3/4" x 3" Fabric C rectangles to form Block B as shown.
12. Sew the pieces together. Press seams toward the rectangle units, and the middle row as indicated with arrows in the diagram. Once complete, Block B should measure 8" x 8" unfinished.
13. Repeat to create (4) Block B using Fabrics B and C for Row 1. (All Block B colorways will consistently use Fabric A.)

# MONKEY BARS



14. Repeat Block B assembly and pressing instructions. Use the following guide and diagrams to create (9) additional Block B colorways in the correct quantity and fabric combinations listed.

- |  |   |
|--|---|
| a. Row 2: Create (5) with Fabrics D & E. | f. Row 7: Create (4) with Fabrics N & O.  |
| b. Row 3: Create (4) with Fabrics F & G. | g. Row 8: Create (5) with Fabrics P & Q.  |
| c. Row 4: Create (5) with Fabrics H & I. | h. Row 9: Create (4) with Fabrics R & S.  |
| d. Row 5: Create (4) with Fabrics J & K. | i. Row 10: Create (5) with Fabrics T & U. |
| e. Row 6: Create (5) with Fabrics L & M. |   |

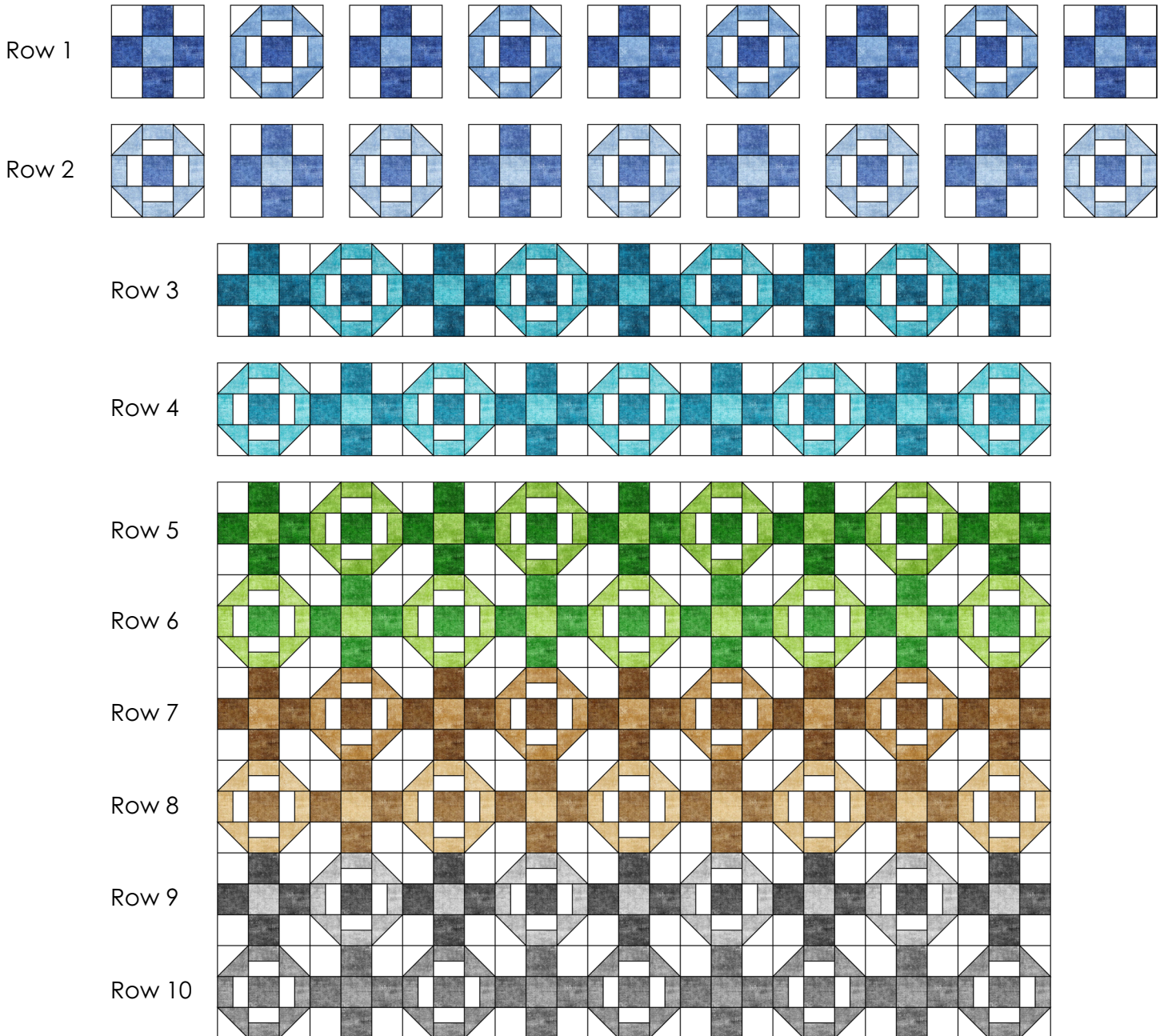


## Quilt Assembly:

15. Arrange Blocks A and B into (10) horizontal rows labeled as Rows 1-10. Each horizontal row will only contain (2) fabrics from the same color family (with Fabric A). Ensure Blocks A and B alternate throughout the quilt top.
16. Sew blocks into horizontal rows. Pressing instructions for Blocks A and B should allow all seams to nestle within the quilt top. Use pins to help align and nestle seams between Blocks A and B. Press toward Block A. Rows 1-10 should measure 8" x 68" unfinished.
17. Sew Rows 1-10 together to complete the quilt top, using pins to help align and nestle seams between each row. Once complete, the quilt top should measure 68" x 75 1/2" unfinished.



# MONKEY BARS



## Finishing the Quilt:

18. Sandwich the quilt top with batting and backing. Baste quilt layers together using your preferred method.
19. Quilt as desired.
20. Bind quilt using (8) 2 1/4" x WOF strips.