

michael miller FABRICS

GROWING TALL

SIZE: 65 1/2"W x 64 1/2"H • LEVEL: INTERMEDIATE • PATTERN BY: NATALIE CRABTREE •
SUNFLOWER FESTIVAL FABRIC COLLECTION • PATTERN AVAILABLE ON: WWW.MICHAELMILLERFABRICS.COM



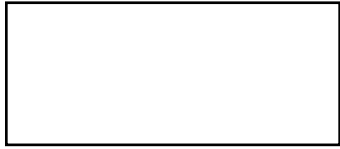
THIS IS A DIGITAL REPRESENTATION OF THE QUILT TOP, FABRIC MAY VARY.

PLEASE NOTE: BEFORE BEGINNING YOUR PROJECT, CHECK FOR ANY PATTERN UPDATES AT MICHAELMILLERFABRICS.COM'S FREE PROJECTS SECTION.

p.212.704.0774 | info@michaelmillerfabrics.com | www.michaelmillerfabrics.com



GROWING TALL



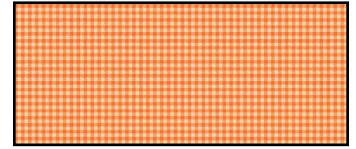
FABRIC A
Cotton Couture
SC_5333 Bright White
3 1/8 yards



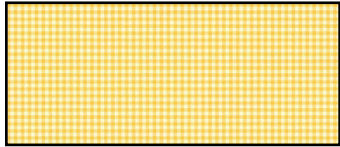
FABRIC B
DCX10734
Blooming Sunflowers
White
3/8 yard



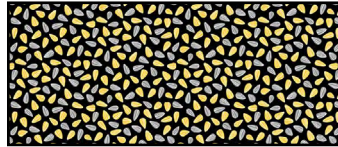
FABRIC C
DCX10734
Blooming Sunflowers
Gray
3/8 yard



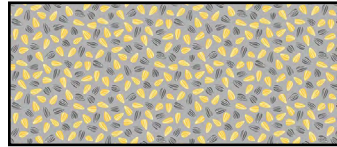
FABRIC D
CX10738
Checkered Orange
3/8 yard



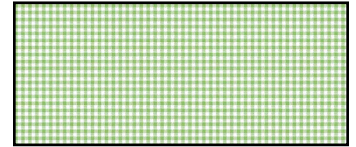
FABRIC E
CX10738
Checkered Yellow
3/8 yard



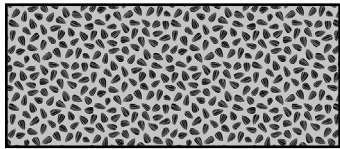
FABRIC F
CX10741
Sunflower Seeds Black
1/4 yard



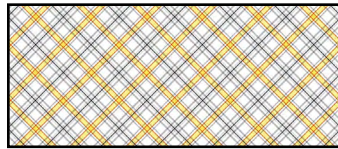
FABRIC G
CX10741
Sunflower Seeds Gray
1/4 yard



FABRIC H
CX10738
Checkered Green
1 yard



FABRIC I
CX10741
Sunflower Seeds
Charcoal
3/8 yard



FABRIC J
CX10739
Sunshine Plaid Multi
1 yard
(includes binding)



FABRIC K
DCX10735
Sunflower Splendor
White
3/4 yard

BACKING: 4 1/8 yards

ADDITIONAL SUPPLIES:

- Fusible Web
Optional
- Template Plastic
Optional

GROWING TALL

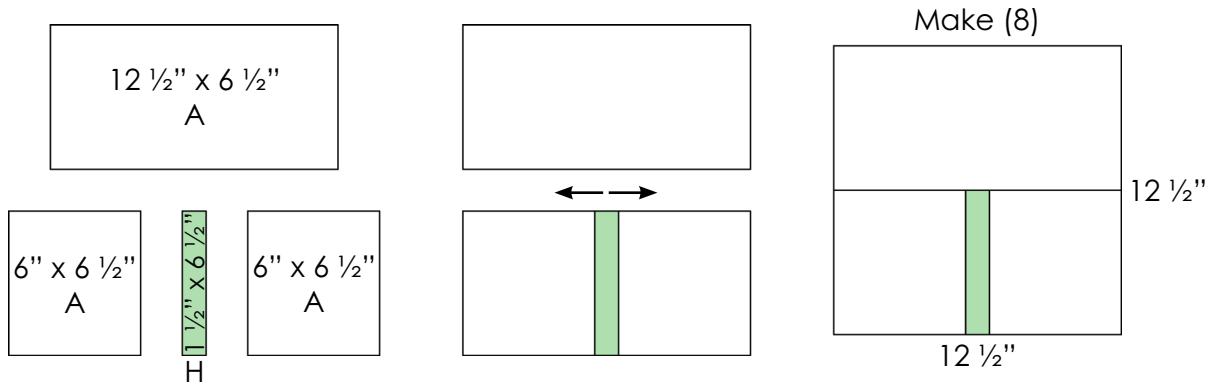
KEY	CUTTING INTRUCTIONS
A	<ul style="list-style-type: none"> • Cut (4) 4 ½" x WOF strips. Subcut (32) 4 ½" squares for Leaf and Stem Blocks. • Cut (3) 3 ½" x WOF strips. Subcut (32) 3 ½" squares for Leaf and Stem Blocks. • Cut (5) 6" x WOF strips. Subcut the following: <ul style="list-style-type: none"> ○ (16) 6" x 6 ½" rectangles for Sunflower Blocks. ○ (16) 6" x 3 ½" rectangles for Leaf and Stem Blocks. ○ (16) 6" x 1 ½" rectangles for Leaf and Stem Blocks. • Cut (2) 12 ½" x WOF strips. Subcut the following: <ul style="list-style-type: none"> ○ (8) 12 ½" x 6 ½" rectangles for Sunflower Blocks. ○ (4) 12 ½" x 3" rectangles for Quilt Assembly. ○ (4) 12 ½" x 1 ½" rectangles for Quilt Assembly. • Cut (10) 2" x WOF strips. Piece strips for length using diagonal seams. From the long strip, subcut the following for Quilt Assembly: <ul style="list-style-type: none"> ○ (3) 2" x 52" Vertical Sashing Strips. ○ (2) 2" x 52" Side Border 1. ○ (2) 2" x 56" Top/Bottom Border 1.
B - E	<ul style="list-style-type: none"> • From each fabric, cut (24) Dresden Blade Templates (totaling (96) templates) for Sunflower Blocks.
F - G	<ul style="list-style-type: none"> • From each fabric, cut (4) Circle Templates (totaling (8) templates) for Sunflower Blocks using your preferred applique method. Reference the Template Page for Applique Options.
H	<ul style="list-style-type: none"> • Cut (4) 1 ½" x WOF strips. Subcut the following for Leaf and Stem Blocks: <ul style="list-style-type: none"> ○ (8) 1 ½" x 12 ½" rectangles. ○ (8) 1 ½" x 6 ½" rectangles. • Cut (4) 6" x WOF strips. Subcut (32) 6" x 4 ½" rectangles for Leaf and Stem Blocks.
I	<ul style="list-style-type: none"> • Cut (6) 1 ½" x WOF strips. Piece strips for length using diagonal seams. From the long strip, subcut the following for Quilt Assembly: <ul style="list-style-type: none"> ○ (2) 1 ½" x 55" Side Border 2. ○ (2) 1 ½" x 58" Top/Bottom Border 2.
J	<ul style="list-style-type: none"> • Cut (7) 2 ¼" x WOF strips for binding. • Cut (7) 2" x WOF strips. Piece strips for length using diagonal seams. From the long strip, subcut the following for Quilt Assembly: <ul style="list-style-type: none"> ○ (2) 2" x 57" Side Border 3. ○ (2) 2" x 61" Top/Bottom Border 3.
K	<ul style="list-style-type: none"> • Cut (7) 3" x WOF strips. Piece strips for length using diagonal seams. From the long strip, subcut the following for Quilt Assembly: <ul style="list-style-type: none"> ○ (2) 3" x 60" Side Border 4. ○ (2) 3" x 66" Top/Bottom Border 4.

GROWING TALL

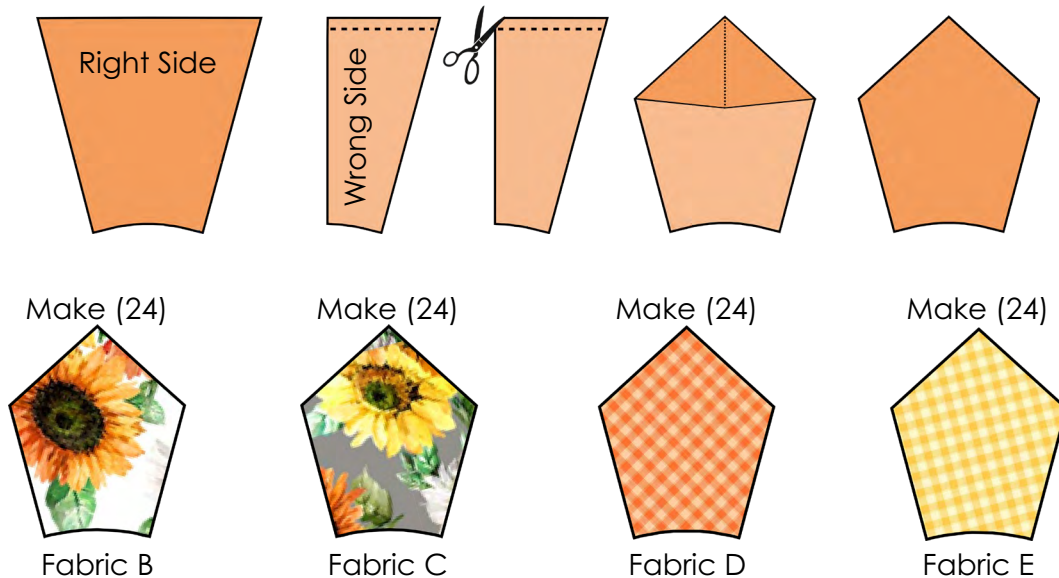
Piecing Instructions:

Sunflower Block Assembly:

1. Sew (1) 6" x 6 1/2" Fabric A rectangle to either side of (8) 1 1/2" x 6 1/2" Fabric H rectangles. **Press toward Fabric A.** Then, sew (1) 12 1/2" x 6 1/2" Fabric A rectangle to the top of each unit to create the background of each Sunflower Block. Sunflower Blocks should measure 12 1/2" x 12 1/2" unfinished at this step.

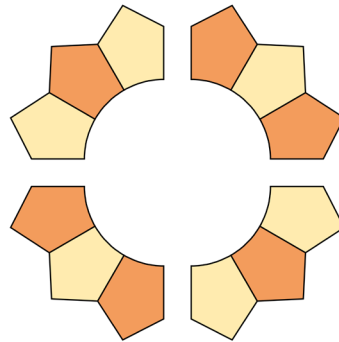
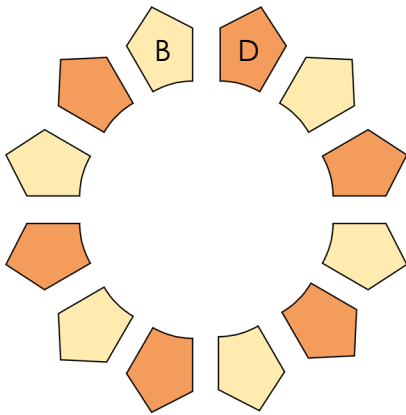


2. Gather (24) Dresden Blade Templates from each of Fabrics B, C, D and E.
3. Fold each Dresden Blade Template in half lengthwise, RST.
4. Sew along the top edge of each Dresden Blade Template as shown in the diagram using a 1/4" seam. **Backstitch at the beginning and end of each seam thoroughly to secure.**
5. Use a small pair of scissors to cut a small triangle from the seam allowance on the folded corner of each Dresden Blade. This will create the point of each Dresden Blade, and eliminate excess bulk at the point. **Do not cut through the thread, cut just above the thread.**
6. Turn each Dresden Blade Template right side out. Use your fingers or a special applique turning tool to carefully poke out each Dresden Blade's point for a sharp appearance.
7. Use your fingers to center the seam. Use an iron to press the seam to one side. Press and starch the completed Dresden Blades for a crisp finish.

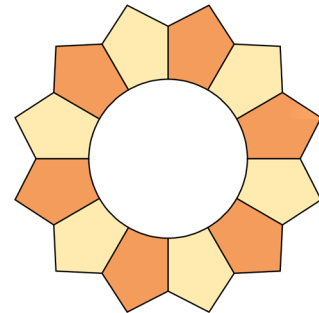


GROWING TALL

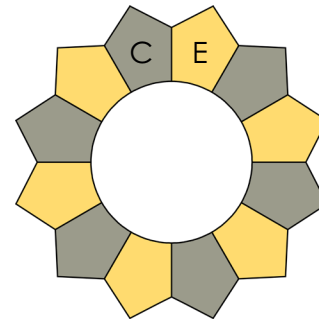
8. Pair together Dresden Blades from Fabrics B and D.
9. Sew (6) Fabric B Dresden Blades and (6) Fabric D Dresden Blades into a circle as shown, aligning the top folded corners of each blade. Alternate between Fabrics B and D. Backstitch at the beginning and end of each seam. Press seams to one side so that the Dresden Plate lays flat.
10. Repeat to create (4) Dresden Plates with Fabrics B and D.



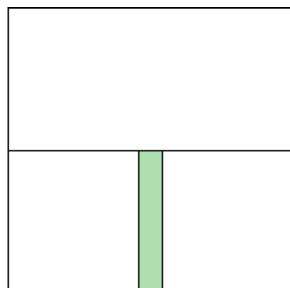
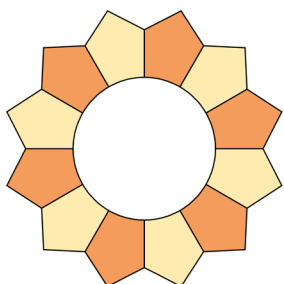
Make (4)



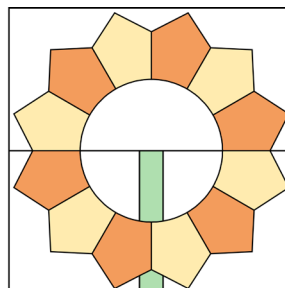
Make (4)



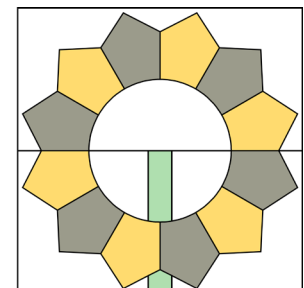
11. Pair together Dresden Blades from Fabrics C and E. Repeat Steps 9-10 to create (4) Dresden Plates using Fabrics C and E.
12. Place (1) Dresden Plate (both colorways) onto the right side of (8) Sunflower Block backgrounds created in Step 1. The Fabric H 'stem' should be located at the bottom of each Sunflower Block. Center the Dresden Plates and pin to the backgrounds to avoid shifting.
13. Stitch around the outside edges of each Dresden Plate using either a straight stitch or zig-zag stitch to secure.
14. Next, place the prepared Circle Templates in the center of each Sunflower Block. Use Fabric G Circle Templates on the B/D Sunflower Blocks, and use Fabric F Circle Templates on the C/E Sunflower Blocks.
15. Applique the Circle Templates into place using your preferred method (reference the Template Pages for more details) to complete (8) Sunflower Blocks total. Sunflower Blocks should measure 12 1/2" x 12 1/2" unfinished.



Fabrics B & D



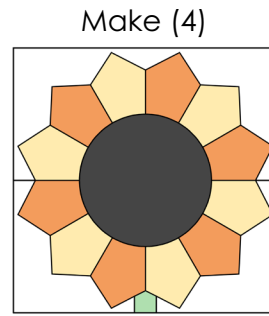
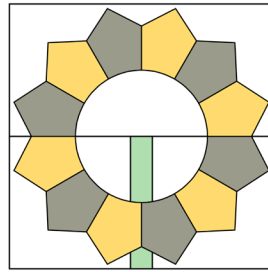
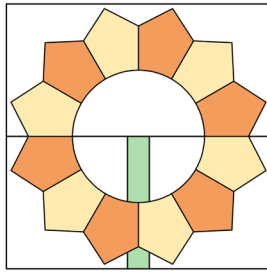
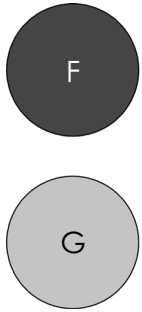
Fabrics C & E



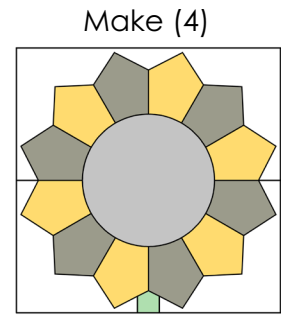
12 1/2"

12 1/2"

GROWING TALL



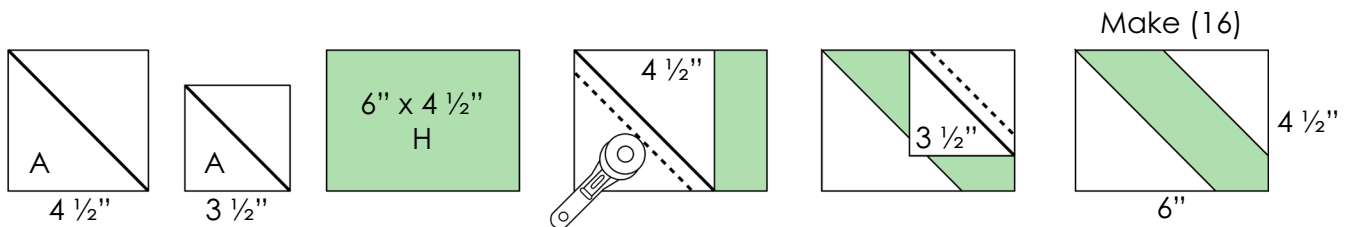
Make (4)
Fabrics B, D & F



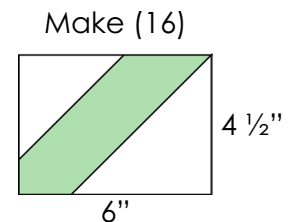
Make (4)
Fabrics C, E & G

Leaf and Stem Block Assembly:

16. Draw a diagonal line on the wrong side of (32) 4 1/2" Fabric A squares and (32) 3 1/2" Fabric A squares.
17. Place (1) 4 1/2" Fabric A square onto the left corner of (16) 6" x 4 1/2" Fabric H rectangles, RST and edges aligned. Note the orientation of the drawn diagonal line on the wrong side of the Fabric A square in the diagram.
18. Sew along the drawn diagonal line. Then, trim excess corner fabric from the bottom left corner of each Fabric H rectangle to a 1/4". Press toward the corners.
19. Next, place (1) 3 1/2" Fabric A square onto the top right corner of the same (16) Fabric H rectangles, RST. Repeat SNF techniques to attach Fabric A squares to complete (16) leaf units for the left side of the Leaf and Stem Blocks. Leaf units should measure 6" x 4 1/2" unfinished.

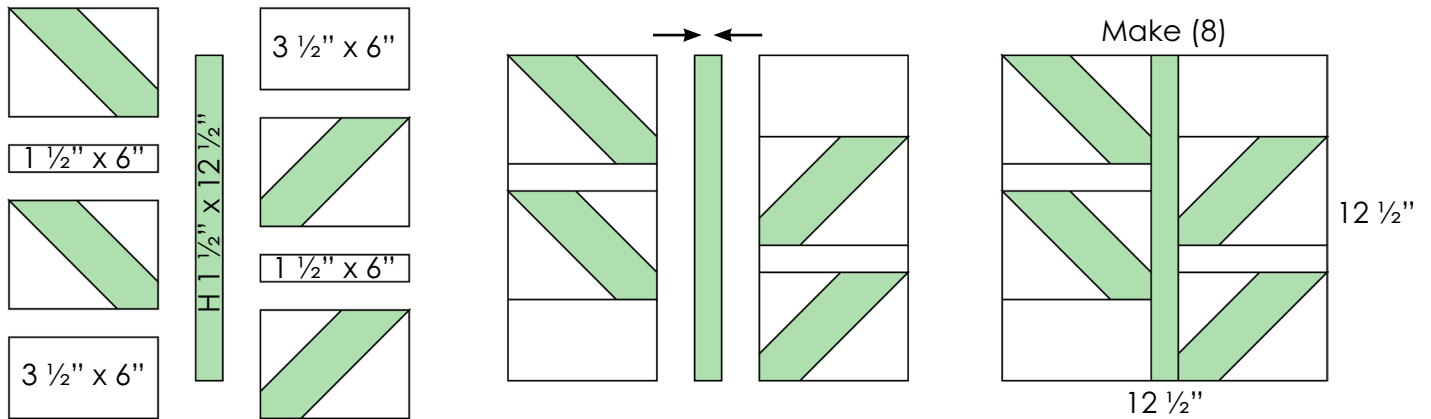


20. Repeat SNF techniques to create (16) **mirror image** leaf units. Attach 4 1/2" Fabric A squares to the bottom right corner of (16) 6" x 4 1/2" Fabric H rectangles, and 3 1/2" Fabric A squares to the top left corner of the same Fabric H rectangles.



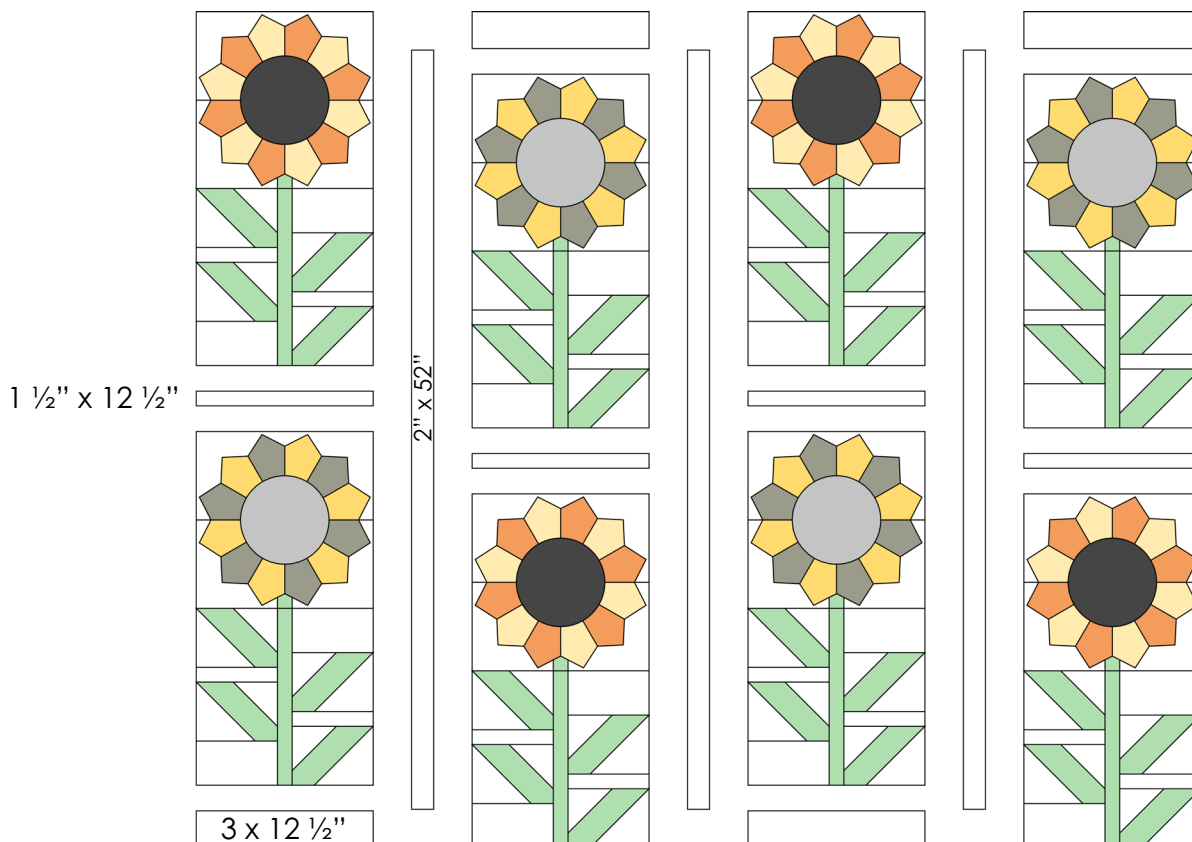
21. Arrange (2) sets of mirror image leaf units, (1) 1 1/2" x 12 1/2" Fabric H rectangle, (2) 1 1/2" x 6" Fabric A rectangles and (2) 3 1/2" x 6" Fabric A rectangles to form a Leaf and Stem Block. Ensure leaf units are placed and orientated correctly before proceeding.
22. Sew the pieces together as shown, pressing seams away from the leaf units and toward the center Fabric H rectangle. Once complete, the Leaf and Stem Block should measure 12 1/2" x 12 1/2" unfinished.
23. Repeat to create (8) identical Leaf and Stem Blocks.

GROWING TALL



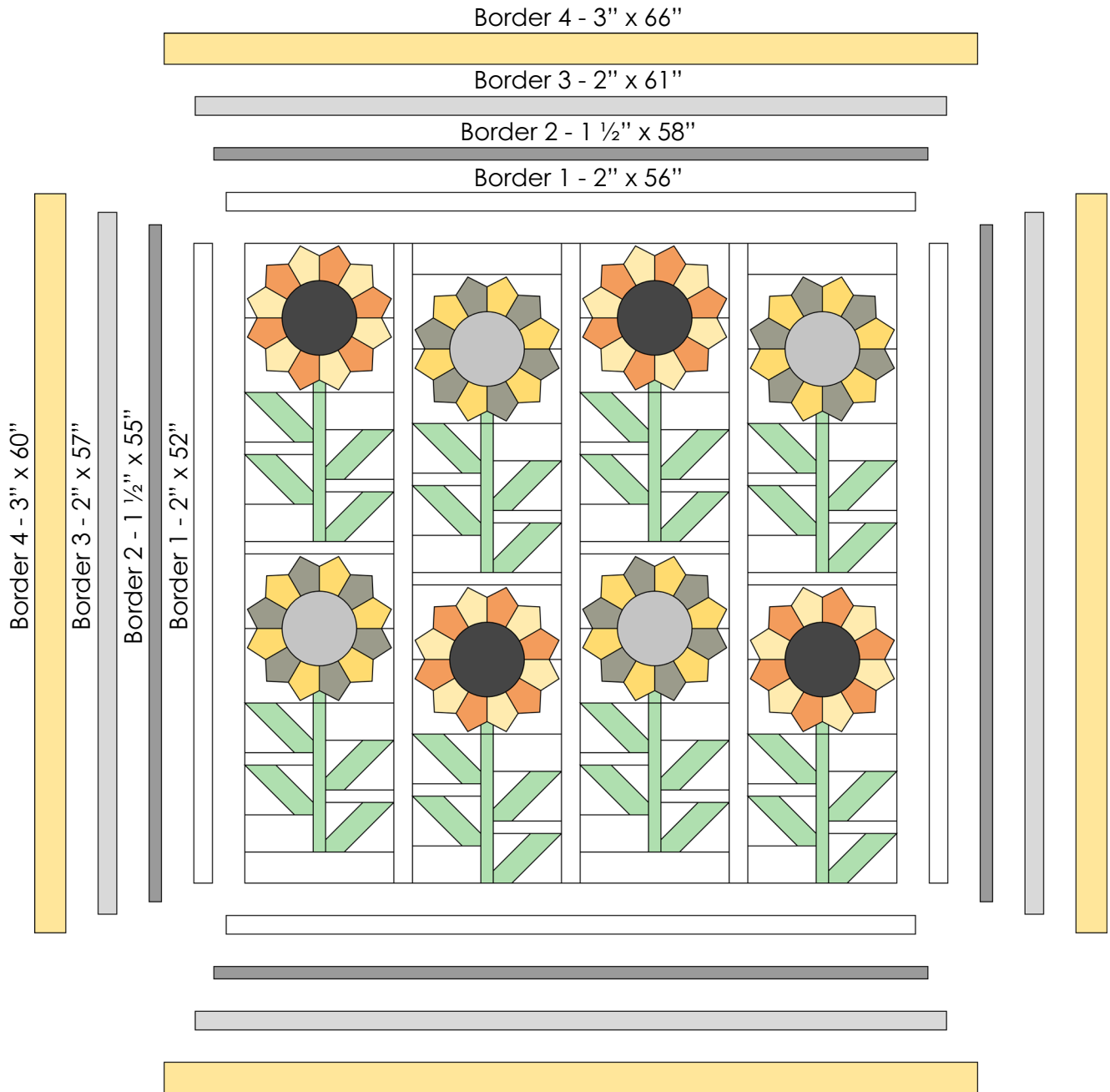
Quilt Assembly:

24. Arrange Sunflower Blocks and Leaf and Stem Blocks into (4) vertical columns, alternating between Sunflower Block colorways. Place assorted Fabric A pieces in each vertical column and in between columns as shown. Diagrams indicate size placement.
25. Sew vertical columns together, pressing seams toward the Fabric A pieces. Vertical columns should measure 12 1/2" x 52" unfinished.
26. Sew vertical columns and long Fabric A strips together to complete the quilt top center. It is recommended to use pins to align the vertical columns and Fabric A strips to avoid stretching or shifting. Press toward the Fabric A strips. Once complete, the quilt top center should measure 53" x 52" unfinished.



GROWING TALL

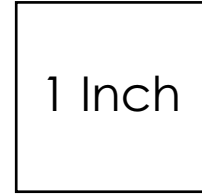
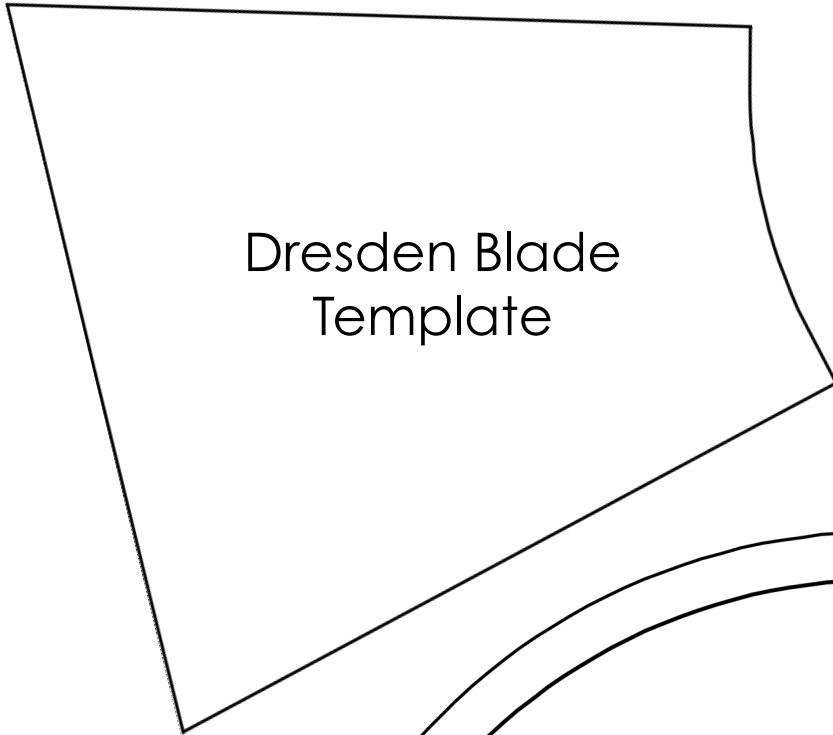
27. Sew Border 1 (Fabric A), Border 2 (Fabric I), Border 3 (Fabric J) and Border 4 (Fabric K) to the quilt top center in numerical order. For all borders, attach the Side Borders first, followed by the Top/Bottom Borders. Use pins to align borders to the sides of the quilt top center. Press outward after attaching each border. Reference diagrams and cutting instructions for border measurements. Once complete, the quilt top should measure 66" x 65" unfinished.



Finishing the Quilt:

28. Sandwich the quilt top with batting and backing. Baste quilt layers together using your preferred method.
29. Quilt as desired.
30. Bind quilt using (7) 2 1/4" x WOF Fabric J strips.

GROWING TALL TEMPLATES



Print at 100% or
Actual Size

