

michael miller FABRICS

Cat-tastic

SIZE: 68"Wx 85"H • LEVEL: Intermediate • PATTERN BY: Project House 360 • Blue Muse



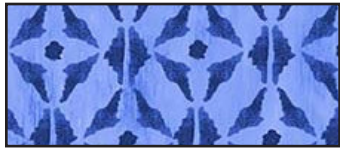
PLEASE NOTE: THIS PATTERN HAS BEEN THROUGH OUR TECHNICAL EDITING PROCESS. HOWEVER, BEFORE BEGINNING YOUR PROJECT, CHECK FOR ANY PATTERN UPDATES AT MICHAELMILLERFABRICS.COM IN THE FREE DOWNLOAD SECTION.

THIS IS A DIGITAL REPRESENTATION OF THE QUILT TOP, FABRIC MAY VARY.

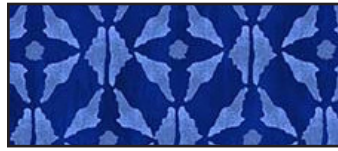
p.212.704.0774 | info@michaelmillerfabrics.com | www.michaelmillerfabrics.com

Cat-tastic

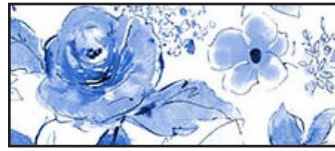
Note: Fabric swatches are not to scale, they are for identification purposes only.



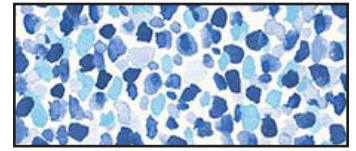
FABRIC A
CX9736 cornflower
1¼ yards



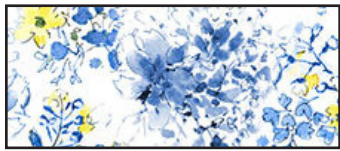
FABRIC B
CX9736 navy
1¼ yards



FABRIC C
DCX9727 white
2¾ yard



FABRIC D
CX9732 wave
¾ yard



FABRIC E
DCX9734 white
¾ yard



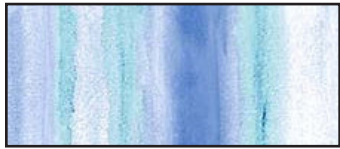
FABRIC F
SC5333 boy
¾ yard



FABRIC G
DCX9730 white
¾ yard



FABRIC H
DCX9729 delft
¾ yard



FABRIC I
DCX9725 blue
1¾ yard



FABRIC J
CX9736 breeze
¾ yard

Backing
5¼ yards

¼" Seam Allowance Check

To check if your seam is accurate, cut three 1½" x 3" pieces from scrap fabric.

Sew the pieces together along the 3" side, using what you believe is a ¼" seam.

Press away from the center piece.

Measure.

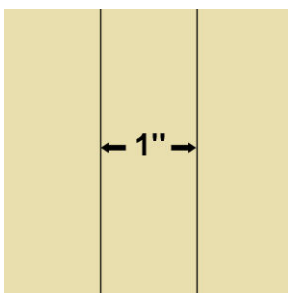
The center piece should be exactly 1" wide.

If, when you measure, the center is less than 1", your seam allowance is too large. You need to move the needle to the right.

If it's more than 1", your seam allowance is too small and you need to move the needle to the left.

Consult your machine's owner's manual for instructions on moving your needle position.

Repeat this check until your center strip measures correctly.



Cat-tastic

KEY	CUTTING INSTRUCTIONS	WOF = width of fabric
A	(5) 7½" x WOF strips. Subcut: (24) 7½" squares	
B	(5) 7½" x WOF strips. Subcut: (24) 7½" squares	
C	(7) 6½" x WOF strips. (9) 2½" x WOF strips for binding. (48) template A	
D	(48) template A	
E	(48) template A	
F	(48) template B	
G	(12) template C, fussy cut, centering on design.	
H	(4) 6½" squares, fussy cut, centering on design. (4) 2½" squares, fussy cut, centering on design. (20) 3" squares, fussy cut, centering on design.	
I	(16) 3" x WOF strips. Subcut: (31) 3" x 14½"	
J	(7) 2½" x WOF strips.	

Block A:

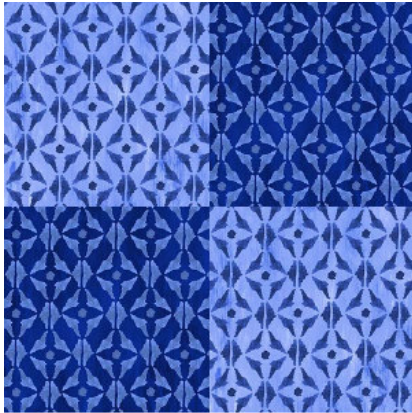
Make 12

1. Fold template A in half lengthwise, right sides together, and stitch a ¼" seam on the straight end. Clip the corner and turn right side out. Press seam open, then centering seam, press blade flat.
2. Stitch the template A pieces together as shown. Make 48 units.
3. Add template B using curved piecing.
4. Stitch four units together, matching seams, to complete one ring. Make twelve rings.



5. Stitch two fabric A and two fabric B 7½" squares together in pairs. Stitch the pairs together to create the block background. Make twelve backgrounds.
6. Applique the rings made in step 4 to the block backgrounds, centering the ring. Cut away excess background behind the rings, leaving a ¼" seam allowance.
7. Applique one template C to each block, using your favorite method. Square to 14½". Make twelve blocks.

Step 5



Steps 6-7



Assembly:

8. Use the assembly diagram on page 4 to combine the blocks with the fabric I 3" x 14½" strips and fabric H 3" squares.
9. Cut one fabric J 2½" x WOF strip in half. Add a whole strip to each piece to make two 1½" strip lengths. Trim to 2½" x 52½" and add to the top and bottom of the quilt.
10. Stitch four fabric J 2½" x WOF strips together in pairs. Trim to 2½" x 69". Add one fabric H 2½" square to each end of each strip and add to the sides of the quilt.
11. Repeat step 9, using three fabric C 6½" x WOF strips. Trim each strip to 6½" x 56½" and add to the top and bottom of the quilt.
12. Stitch four fabric C 6½" x WOF strips together in pairs. Trim to 6½" x 73". Add one fabric H 6½" square to each end of each strip and add to the sides of the quilt.

Finishing:

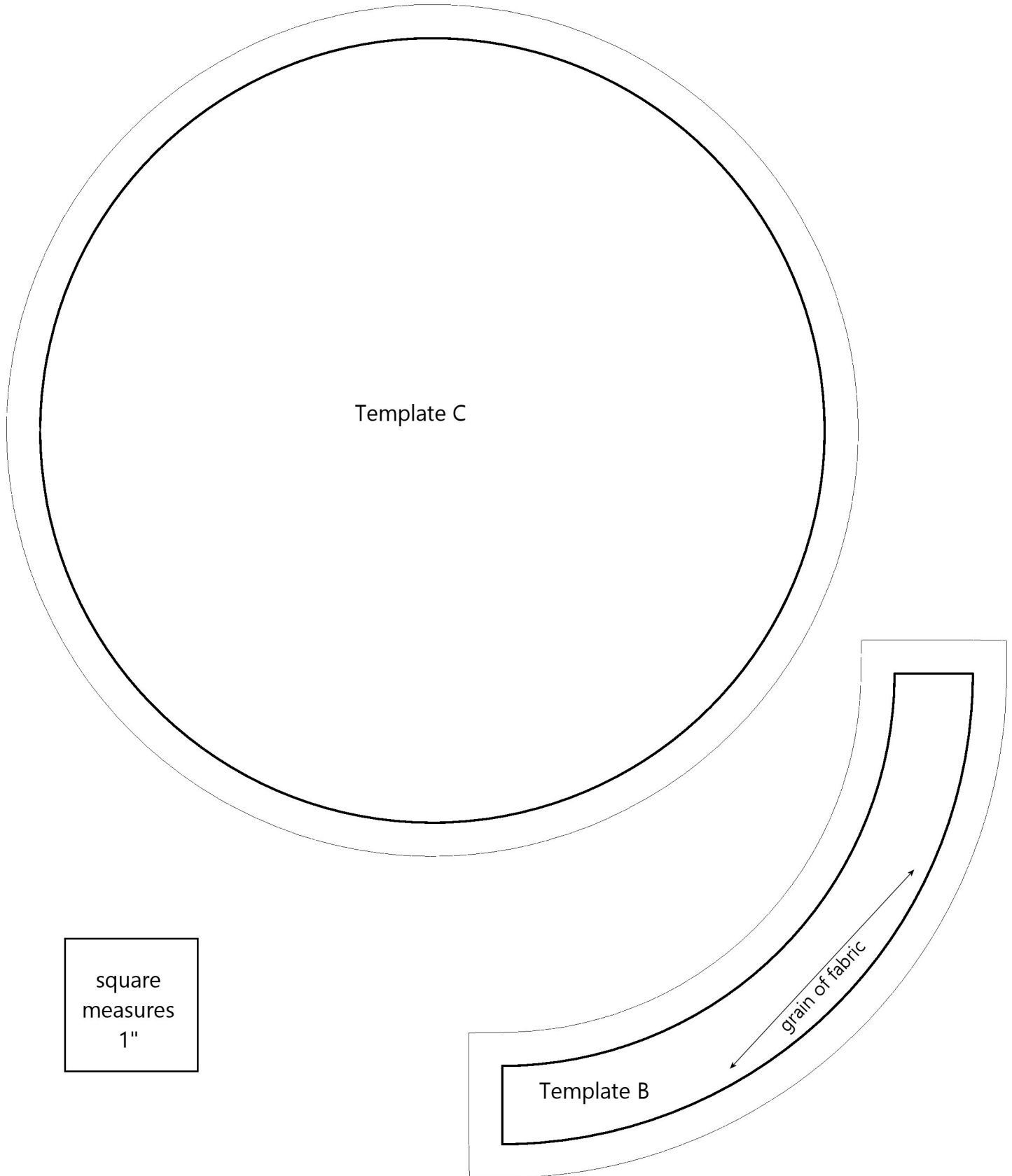
13. Layer, baste and quilt as desired.
14. Bind with nine fabric C 2½" x WOF strips.

Cat-tastic

Assembly Diagram



Cat-tastic



Cat-tastic

