

michael miller FABRICS

Land Of Nod

SIZE: 48"Wx 50"H • LEVEL: Confident Beginner • PATTERN BY: Project House 360 • Mystical Meadow by Claire McAllister



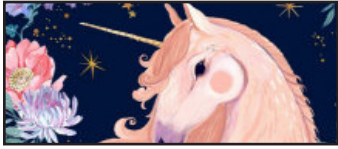
PLEASE NOTE: THIS PATTERN HAS BEEN THROUGH OUR TECHNICAL EDITING PROCESS. HOWEVER, BEFORE BEGINNING YOUR PROJECT, CHECK FOR ANY PATTERN UPDATES AT MICHAELMILLERFABRICS.COM IN THE FREE DOWNLOAD SECTION.

THIS IS A DIGITAL REPRESENTATION OF THE QUILT TOP, FABRIC MAY VARY.

p.212.704.0774 | info@michaelmillerfabrics.com | www.michaelmillerfabrics.com

Land Of Nod

Note: Fabric swatches are not to scale, they are for identification purposes only.



FABRIC A
DDC9653 ink
one full repeat



FABRIC B
DDC9657 ink
1 1/8 yards



FABRIC C
DDC9658 pearl
3/4 yard



FABRIC D
DDC9659 ink
1/2 yard



FABRIC E
DDC9656 lilac
1/2 yard



FABRIC F
DDC9655 blush
1 3/4 yard

Backing
3 1/4 yards

1/4" Seam Allowance Check

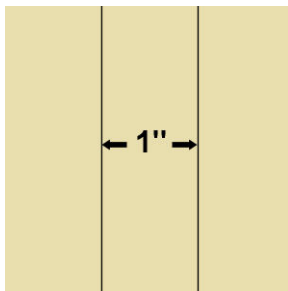
To check if your seam is accurate, cut three 1 1/2" x 3" pieces from scrap fabric.

Sew the pieces together along the 3" side, using what you believe is a 1/4" seam.

Press away from the center piece.

Measure.

The center piece should be exactly 1" wide.



If, when you measure, the center is less than 1", your seam allowance is too large. You need to move the needle to the right.

If it's more than 1", your seam allowance is too small and you need to move the needle to the left.

Consult your machine's owner's manual for instructions on moving your needle position.

Repeat this check until your center strip measures correctly.

KEY	CUTTING INSTRUCTIONS	WOF = width of fabric
A	(1) 20½" x 23" fussy cut, centering design	
B	(5) 2⅞" x WOF strips. Subcut: (64) 2⅞" squares (2) 1¾" x WOF strips. Subcut: (2) 1¾" x 23½" (6) 2" x WOF strips. Subcut: (2) 2" x 23"; (2) 2" x 37½"; (2) 2" x 38½" (2) 2½" x WOF strips.	
C	(3) 2⅞" x WOF strips. Subcut: (32) 2⅞" squares (4) 2½" x WOF strips.	
D	(3) 2⅞" x WOF strips. Subcut: (32) 2⅞" squares	
E	(16) 2½" squares, fussy cut, centering unicorn heads	
F	(6) 5½" x WOF strips. (6) 2½" x WOF strips for binding.	
	Batting: 56" x 58"	

Block A:
Make 16

1. To make half-square triangle units, place one fabric B and one fabric C 2⅞" square right sides together. Draw a diagonal line on the top square. Stitch a ¼" seam allowance on each side of the drawn line. Cut on the drawn line and press darker fabric outward. Square to 2½". Make 64 units.
2. Repeat step one using fabrics B and D. Make 64 units.
3. Combine four of each unit from steps one and two, along with one fabric E 2½" fussy cut square as shown. Square to 6½". Make 16 blocks.



4. Stitch two fabric C and one fabric B $2\frac{1}{2}$ " x WOF strips together as shown to make a stripset. Cut into sixteen $2\frac{1}{4}$ " x $6\frac{1}{2}$ " pieces.
5. Repeat step four, cutting the stripset into sixteen $1\frac{3}{4}$ " x $6\frac{1}{2}$ " pieces.

Step 4



Step 5



Assembly:

6. Stitch one fabric B 2 " x 23 " strip to the sides of the fabric A panel. Stitch one fabric B $1\frac{3}{4}$ " x $23\frac{1}{2}$ " strip to the top and bottom of the panel.
7. Use the assembly diagram on page 4 to add the pieced blocks (steps 1-3) and sashing strips (steps 4-5). Use the strips from step 4 on the sides and the strips from step 5 on the top and bottom.
8. Stitch one fabric B 2 " x $37\frac{1}{2}$ " strip to each side of the quilt. Stitch one fabric B 2 " x $38\frac{1}{2}$ " strip to the top and bottom of the quilt.
9. Cut two fabric F $5\frac{1}{2}$ " x WOF strips in half. Add a whole strip to each piece to make four $1\frac{1}{2}$ strip lengths. Add to the quilt, mitering corners.

Finishing:

10. Layer, baste and quilt as desired.
11. Bind with six fabric F $2\frac{1}{2}$ " x WOF strips.

Land Of Nod

Assembly Diagram

