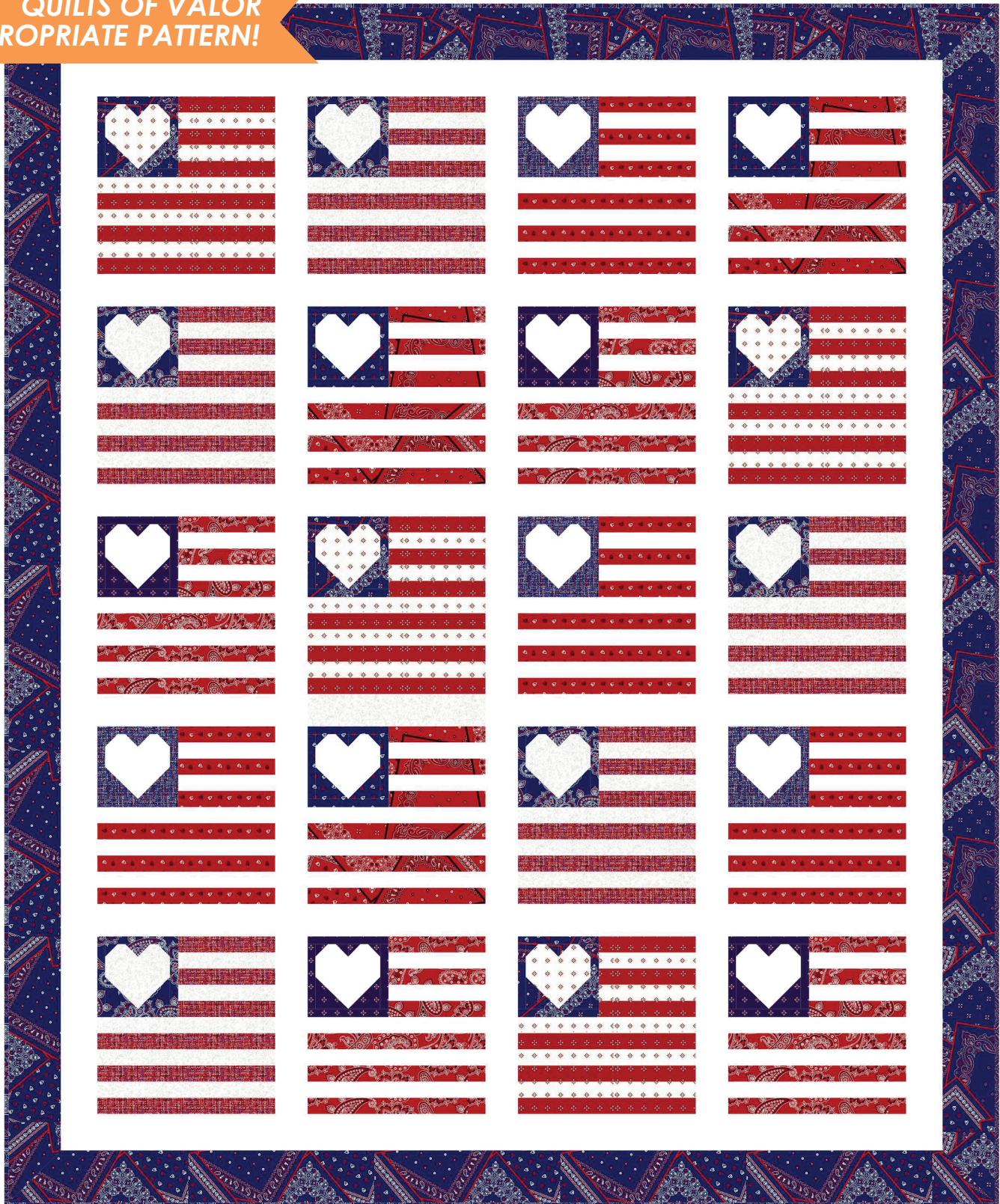


HEARTLAND QUILT

SIZE: 61"Wx 74"H • LEVEL: ADVANCED BEGINNER • PATTERN BY: WENDY SHEPPARD
FABRIC COLLECTION: BANDANA BALLAD • FREE PATTERN AVAILABLE ON: MICHAELMILLERFABRICS.COM



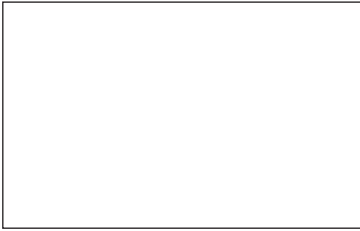
**QUILTS OF VALOR
APPROPRIATE PATTERN!**



THIS IS A DIGITAL REPRESENTATION OF THE QUILT TOP, FABRIC MAY VARY.

PLEASE NOTE: BEFORE BEGINNING YOUR PROJECT, CHECK FOR ANY PATTERN UPDATES AT MICHAELMILLERFABRICS.COM'S FREE PROJECTS SECTION.

HEARTLAND QUILT



FABRIC A
SC5333-BRIGHT WHITE
COTTON COUTURE
2-1/8 YARDS



FABRIC B
CM0378-GLIMMER
FAIRY FROST
5/8 YARD



FABRIC C
CX9123-NAVY
HANKY PANKY
1-1/8 YARDS



FABRIC D
CX9123-RED
HANKY PANKY
1/4 YARD



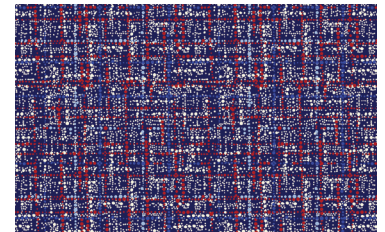
FABRIC E
CX9124-RED
BANDANA SASH
5/8 YARD



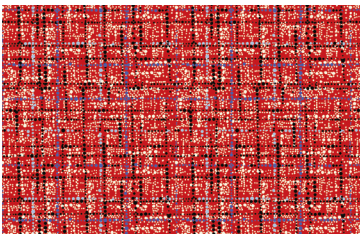
FABRIC F
CX9125-NAVY
BANDANA ALLOVER
1/4 YARD



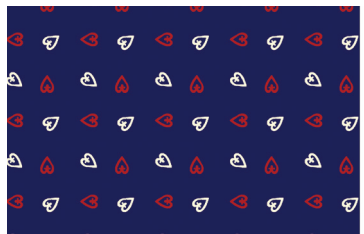
FABRIC G
CX9125-RED
BANDANA ALLOVER
3/8 YARD



FABRIC H
CX9127-NAVY
SPANGLE
1/4 YARD



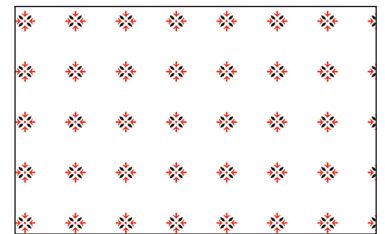
FABRIC I
CX9127-RED
SPANGLE
1/2 YARD



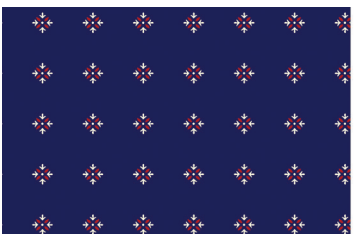
FABRIC J
CX9128-NAVY
CROSS MY HEART
1/4 YARD



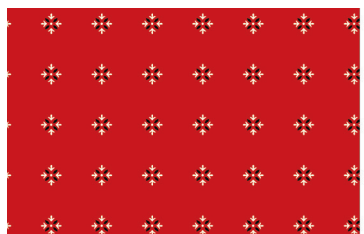
FABRIC K
CX9128-RED
CROSS MY HEART
3/8 YARD



FABRIC L
CX9129-WHITE
BANDANA BAUBLE
1/2 YARD



FABRIC M
CX9129-NAVY
BANDANA BAUBLE
1/4 YARD



FABRIC N
CX9129-RED
BANDANA BAUBLE
3/8 YARD



(BACKING)
YOUR CHOICE
4-5/8 YARDS



HEARTLAND QUILT

KEY	CUTTING INSTRUCTIONS
A	<p>a. flag blocks (11) (3) 2 1/2" x wof. Subcut (22) 2 1/2" x 4 1/2" rectangles. (1) 6 1/2" x wof. Subcut (22) 1 1/2" x 6 1/2" rectangles. (11) 1 1/2" x wof. Subcut (33) 1 1/2" x 11 1/2" rectangles.</p> <p>b. sashing rectangles (1) 11 1/2" x wof. Subcut (15) 2 1/2" x 11 1/2" rectangles.</p> <p>c. sashing strips (5) 2 1/2" x wof. Piece strips and subcut (4) 2 1/2" x 50 1/2" strips.</p> <p>d. inner border (6) 2 3/4" x wof. Piece strips and subcut (2) 2 3/4" x 55" and (2) 2 3/4" x 63 1/2" strips.</p>
B	<p>a. flag blocks (5) (7) 1 1/2" x wof. Subcut (10) 1 1/2" x 6 1/2" and (15) 1 1/2" x 11 1/2" rectangles. (1) 4 1/2" x wof. Subcut (10) 2 1/2" x 4 1/2" rectangles.</p>
C	<p>a. flag blocks (4) (3) 1" x wof. Subcut (8) 1" x 4 1/2" and (8) 1" x 5 1/2" rectangles. (1) 1 1/4" x wof. Subcut (16) 1 1/4" x 1 1/4" squares. (1) 2 1/2" x wof. Subcut (8) 2 1/2" x 2 1/2" squares.</p> <p>b. outer border (7) 3 3/4" x wof. Piece strips and subcut (2) 3 3/4" x 61 1/2" and (2) 3 3/4" x 68" strips.</p>
D	<p>a. flag blocks (3) (5) 1 1/2" x wof. Subcut (9) 1 1/2" x 6 1/2" and (9) 1 1/2" x 11 1/2" rectangles.</p>
E	<p>a. binding (8) 2 1/4" x wof. Piece strips, press raw edge to raw edge along the long sides to make a continuous binding strip.</p>
F	<p>a. flag blocks (5) (3) 1" x wof. Subcut (10) 1" x 4 1/2" and (10) 1" x 5 1/2" rectangles. (1) 1 1/4" x wof. Subcut (20) 1 1/4" x 1 1/4" squares. (1) 2 1/2" x wof. Subcut (10) 2 1/2" x 2 1/2" squares.</p>
G	<p>a. flag blocks (4) (6) 1 1/2" x wof. Subcut (12) 1 1/2" x 6 1/2" and (12) 1 1/2" x 11 1/2" rectangles.</p>
H	<p>a. flag blocks (4) (3) 1" x wof. Subcut (8) 1" x 4 1/2" and (8) 1" x 5 1/2" rectangles. (1) 1 1/4" x wof. Subcut (16) 1 1/4" x 1 1/4" squares. (1) 2 1/2" x wof. Subcut (8) 2 1/2" x 2 1/2" squares.</p>

HEARTLAND QUILT

I	a. flag blocks (5) (8) 1 1/2" x wof. Subcut (15) 1 1/2" x 6 1/2" and (15) 1 1/2" x 11 1/2" rectangles.
J	a. flag blocks (3) (2) 1" x wof. Subcut (6) 1" x 4 1/2" and (6) 1" x 5 1/2" rectangles. (1) 1 1/4" x wof. Subcut (12) 1 1/4" x 1 1/4" squares. (1) 2 1/2" x wof. Subcut (6) 2 1/2" x 2 1/2" squares.
K	a. flag blocks (4) (6) 1 1/2" x wof. Subcut (12) 1 1/2" x 6 1/2" and (12) 1 1/2" x 11 1/2" rectangles.
L	a. flag blocks (4) (6) 1 1/2" x wof. Subcut (8) 1 1/2" x 6 1/2" and (12) 1 1/2" x 11 1/2" rectangles. (1) 2 1/2" x wof. Subcut (8) 2 1/2" x 4 1/2" rectangles.
M	a. flag blocks (4) (3) 1" x wof. Subcut (8) 1" x 4 1/2" and (8) 1" x 5 1/2" rectangles. (1) 1 1/4" x wof. Subcut (16) 1 1/4" x 1 1/4" squares. (1) 2 1/2" x wof. Subcut (8) 2 1/2" x 2 1/2" squares.
N	a. flag blocks (4) (6) 1 1/2" x wof. Subcut (12) 1 1/2" x 6 1/2" and (12) 1 1/2" x 11 1/2" rectangles.

Constructing flag blocks

1. Draw a diagonal line on the wrong side of (1) 1 1/4" x 1 1/4" **Fabric 2** square. Place square, right sides together, at a corner of (1) 2 1/2" x 4 1/2" **Fabric 1** rectangle. Sew on drawn line. Trim 1/4" away from sewn line. Open and press to reveal **Fabric 2** corner triangle. Repeat with another 1 1/4" x 1 1/4" **Fabric 2** square at the adjacent corner along the same short side of the same **Fabric 1** rectangle, followed by (1) 2 1/2" x 2 1/2" **Fabric 2** square at the bottom left corner of the same **Fabric 1** rectangle, as shown.

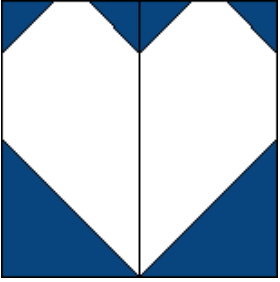


Repeat to make a mirror-imaged unit.

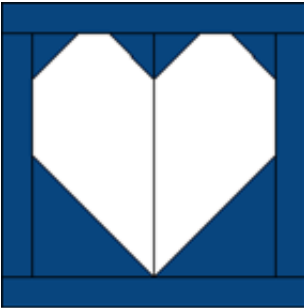


HEARTLAND QUILT

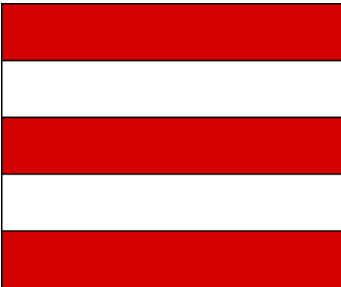
2. Sew together units made in step 1. Unit should measure 4 1/2" x 4 1/2" raw edge to raw edge.



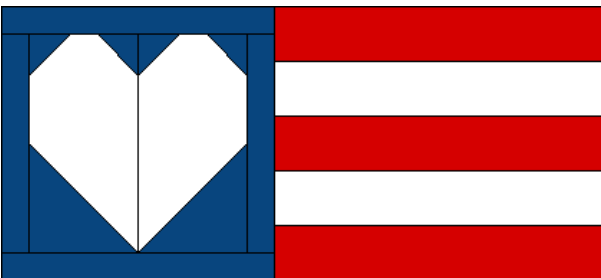
Add (2) 1" x 4 1/2" **Fabric 2** rectangles to the opposite sides of heart unit, followed by (2) 1" x 5 1/2" **Fabric 2** rectangles to the remaining opposite sides of heart unit.



3. Sew together (2) 1 1/2" x 6 1/2" **Fabric 1** and (3) 1 1/2" x 6 1/2" **Fabric 3** rectangles along the long sides.



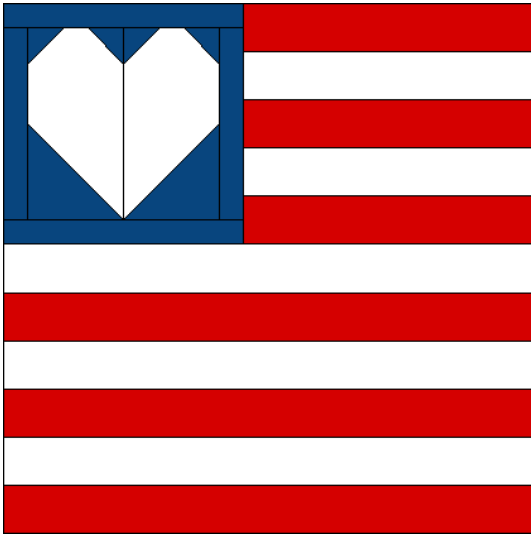
Add stripe unit to the unit made in step 2.



4. Sew together (3) 1 1/2" x 11 1/2" **Fabric 1** and (3) 1 1/2" x 11 1/2" **Fabric 3** rectangles along the long sides. Add stripe unit to the bottom of the unit made in step 3 to complete (1) block. Block should measure 11 1/2" X 11 1/2" raw edge to edge.



HEARTLAND QUILT



5. Make a total number of blocks for the following **Fabric1/Fabric2/Fabric3** combinations:

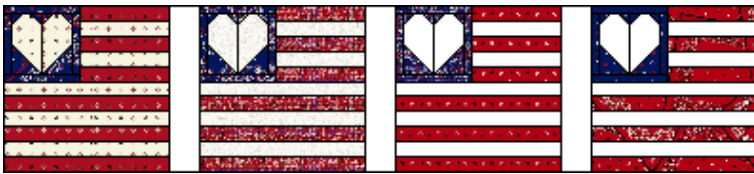
3 blocks: **A/J/D**

4 blocks: **L/C/N, A/H/K, A/M/G**

5 blocks: **B/F/I**

QUILT CENTER ASSEMBLY

1. Pieced rows. Arrange and sew together (4) flag blocks and (3) 2 1/2" x 11 1/2" **A** sashing rectangles to make a pieced row. Make a total of (5) pieced rows. Row 1 is shown below.



2. Sew together pieced rows and (4) 2 1/2" x 50 1/2" **A** sashing strips to complete quilt center.

HEARTLAND QUILT

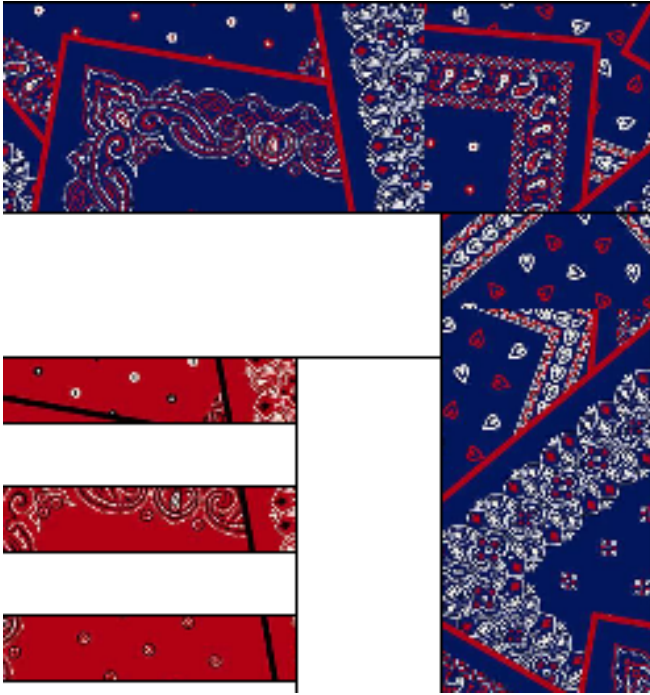


QUILT TOP ASSEMBLY

1. Inner border. Sew (2) $2\frac{3}{4}$ " x $63\frac{1}{2}$ " **A** strips to the opposite long sides of quilt center, followed by (2) $2\frac{3}{4}$ " x 55" **A** strips to the remaining opposite short sides of quilt center.
2. Outer border. Sew (2) $3\frac{3}{4}$ " x 68" **C** strips to the opposite long sides of quilt center, followed by (2) $3\frac{3}{4}$ " x $61\frac{1}{2}$ " **C** strips to the remaining opposite short sides of quilt center to complete quilt top.



HEARTLAND QUILT



FINISHING:

1. With the backing fabric laying taut, place batting and then quilt top to form quilt sandwich. Baste sandwich.
2. Quilt as desired.
3. Bind to finish quilt.