

michael miller FABRICS

DOG SHOW PORTRAIT

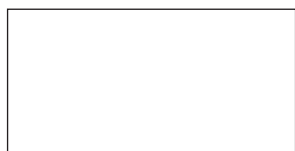
SIZE: 38" X 44" • LEVEL: INTERMEDIATE • PATTERN BY: SUSAN EMORY • FABRIC COLLECTION: DOG SHOW



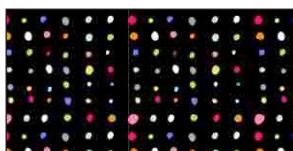
PLEASE NOTE: BEFORE BEGINNING YOUR PROJECT, CHECK FOR ANY PATTERN UPDATES AT MICHAELMILLERFABRICS.COM
212.704.0774 | info@michaelmillerfabrics.com | www.michaelmillerfabrics.com



DOG SHOW PORTRAIT



FABRIC A
SC5333 Bright White
1 yard



FABRIC B
CX8830 Black
3/4 yard



FABRIC C
CX8833 Multi
1/2 yard



FABRIC D
CX8834 Gray
XX yard



FABRIC E
CX8834 Blue
Fat Quarter



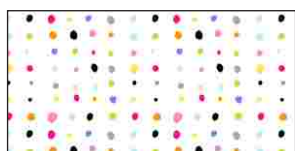
FABRIC F
SC5333 Black
Fat Quarter



FABRIC G
CX8834 Pink
Fat Quarter



FABRIC H
CX8836 Multi
Fat Quarter



FABRIC I
CX8830 White
1-1/2 yards
(backing)

WOF = Width of Fabric Selvage to Selvage

KEY	CUTTING INSTRUCTIONS
A	(1) 30-1/2" x 36-1/2" rectangle. Save remainder for appliqué.
B	(4) 4-1/2" x WOF strips; subcut (2) 4-1/2" x 36-1/2" borders and (2) 4-1/2" x 38-1/2" borders.
C	(5) 2-1/2" x WOF strips and set aside for binding. Save remainder for appliqué.
D-H	Set aside for appliqué.



DOG SHOW PORTRAIT

PIECING INSTRUCTIONS

APPLIQUÉ: (Note: Do not resize or mirror-image appliqué shapes.)

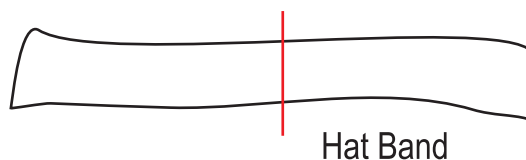
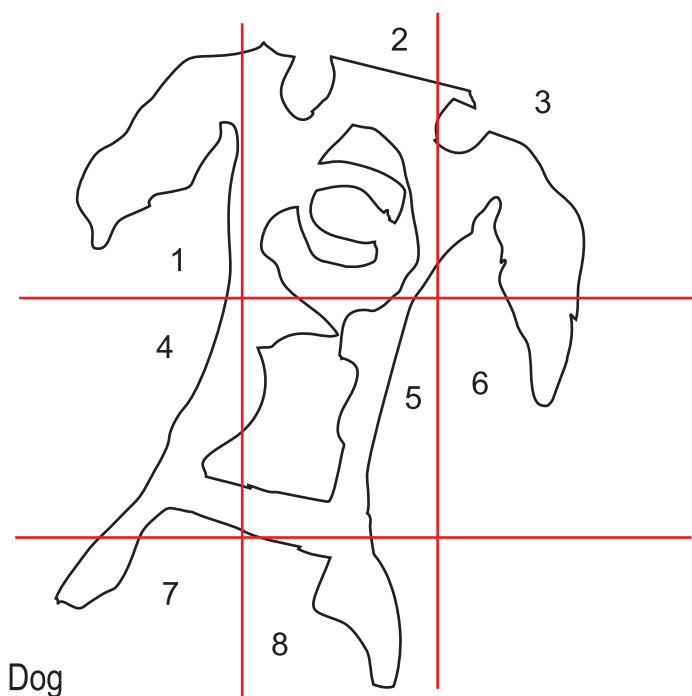
Trace each appliqué shape (pages 4-13) on the paper side of fusible web (see placement notes below for large scale appliqués). DO NOT cut on the traced lines. Cut them apart at least 1/8" outside the lines. Lay a fusible web shape, paper side up, on the wrong side of fabric. Press according to fusible web manufacturer's instructions. Let fabric cool, then cut out shape on the drawn line.

Peel off paper from shape and arrange, fusible side down, on the right side of the appliqué background (refer to image on Page 1 for placement). Fuse to appliqué background following manufacturer's instructions.

Stitch the appliqués using the stitch of your choice. You can use blanket stitch, zig zag or straight stitch.

ASSEMBLY: Sew a 4-1/2" x 36-1/2" Fabric B border to each side of quilt center. Press toward borders. Sew a 4-1/2" x 38-1/2" Fabric B border to top and bottom of quilt center. Press toward borders to complete quilt top.

FINISHING: Layer quilt top, batting and backing together to form a quilt sandwich. Baste and quilt as desired. Binding using (5) Fabric B 2-1/2" strips.



LARGE SCALE APPLIQUÉ:

Use the red lines and diagrams below to line up the shapes for large scale appliqués. Tape appliqué pieces together and then trace onto fusible web.



Piece #1

Fabric D

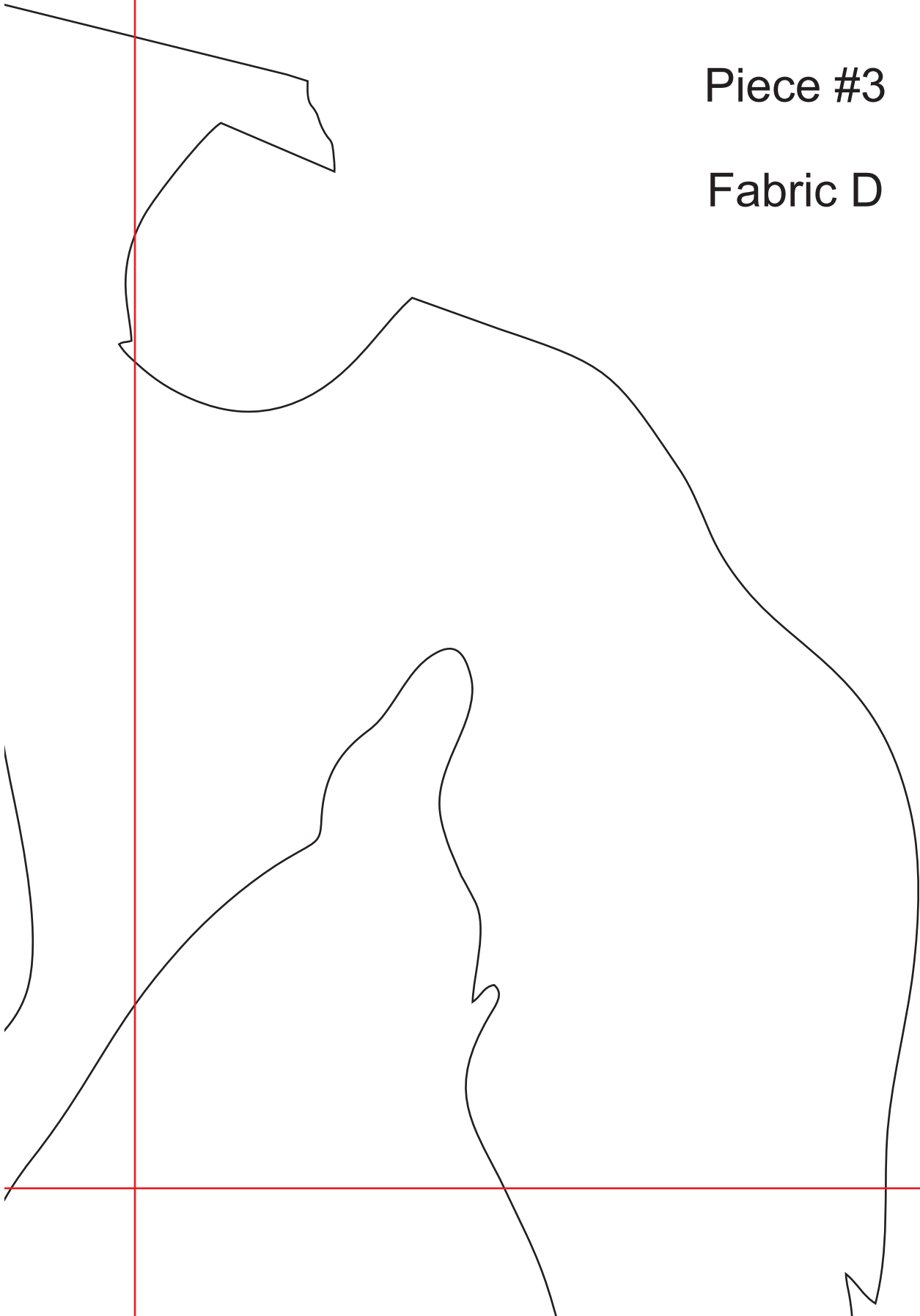
Piece #2

Fabric D



Piece #3

Fabric D



Piece #4

Fabric D





Piece #5

Fabric D



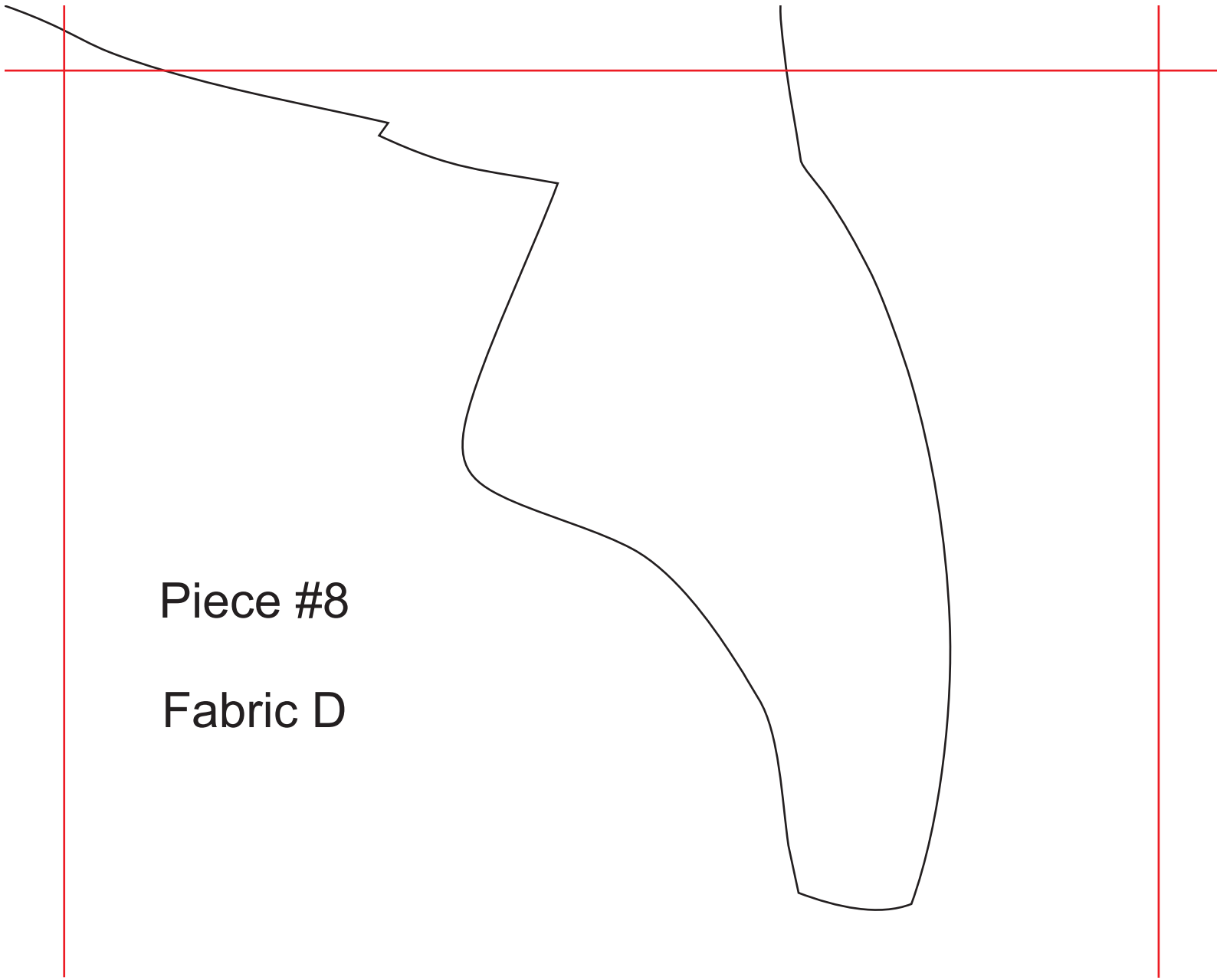
Piece #6

Fabric D



Piece #7

Fabric D



Piece #8

Fabric D



Fabric C
Hat Band
Tape & Cut 1



Fabric C
Hat Band
Tape & Cut 1



Right Eye
Fabric F
Cut 1



Nose
Fabric F
Cut 1



Right Ear
Fabric F
Cut 1



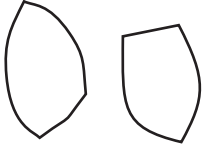
Left Ear
Fabric F
Cut 1



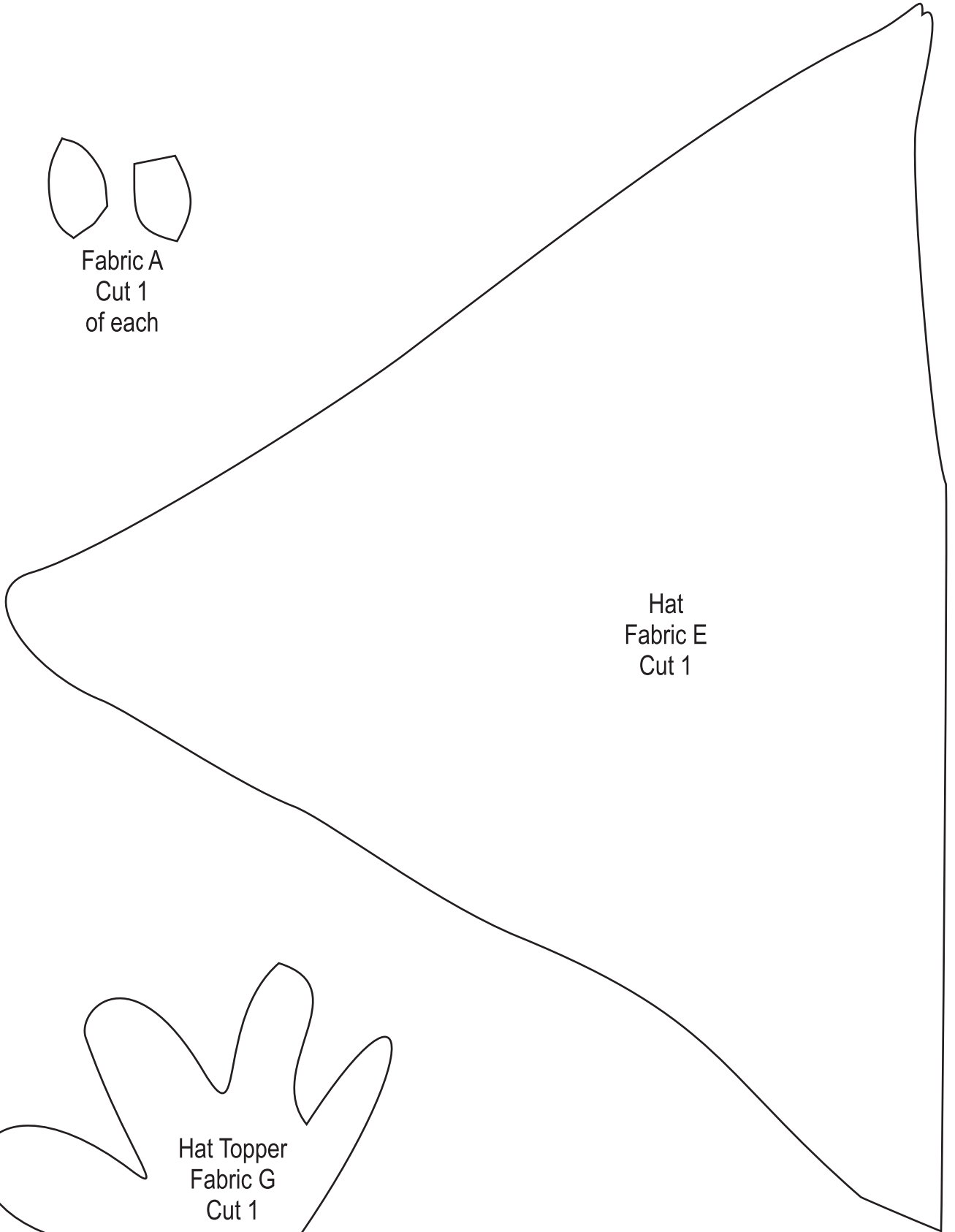
Left Eye
Fabric F
Cut 1



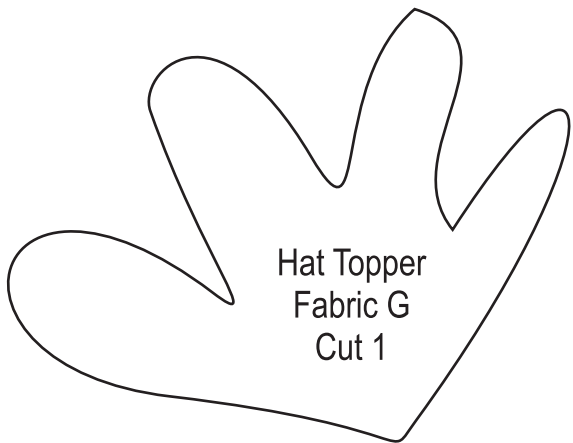
Mouth - Fabric F
Cut 1



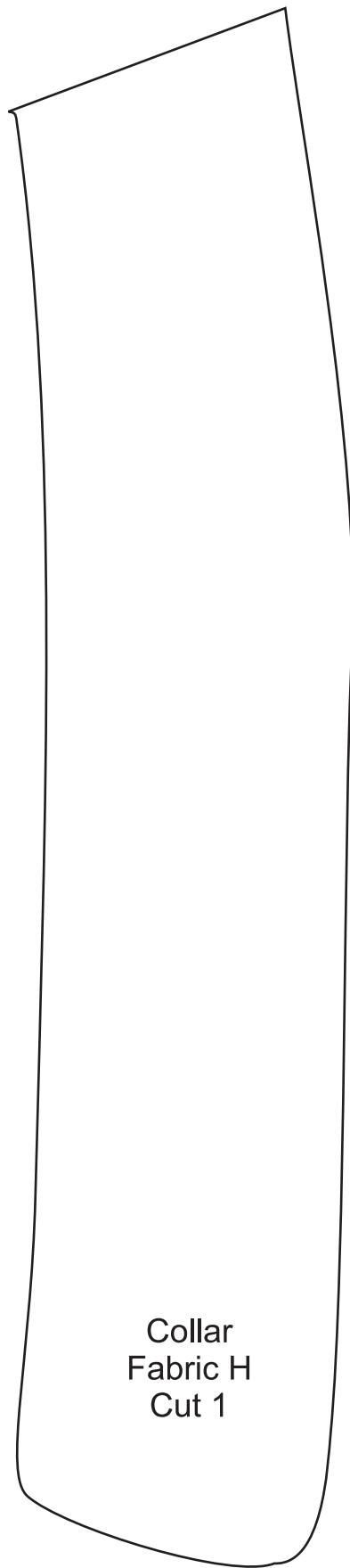
Fabric A
Cut 1
of each



Hat
Fabric E
Cut 1



Hat Topper
Fabric G
Cut 1



Collar
Fabric H
Cut 1