

michael miller FABRICS

# BEACH DAY BABY QUILT

SIZE 33-1/2"W X 43"H | LEVEL CONFIDENT BEGINNER | PATTERN BY ATELIER DE COCOPATCH



10" X 10" SQUARE FRIENDLY!



FREE PATTERN AVAILABLE ON [MICHAELMILLERFABRICS.COM](https://www.michaelmillerfabrics.com)

# FABRIC REQUIREMENTS

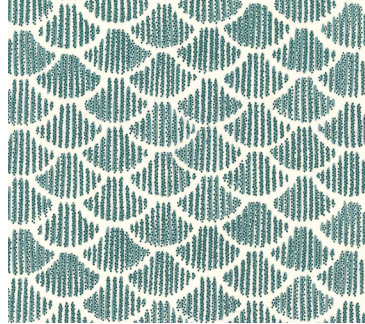
WE DO OUR BEST TO MAKE SURE THESE ARE ACCURATE YARDAGES  
BUT THESE ARE ESTIMATES UNTIL THE FINAL PATTERN IS COMPLETED AND EDITED. THANK YOU.



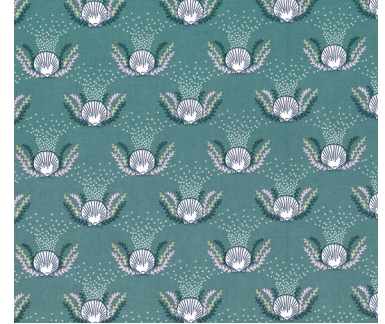
**DC8484 PEONY  
SWEET PLANKTON**  
3/4 YARD



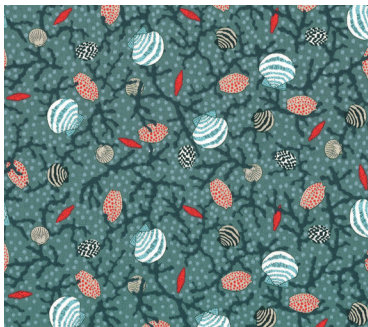
**DC8479 GREEN  
HIDDEN GARDEN**  
(2) 10" X 10"



**DC8485 SAGE  
MERMAID TAIL**  
(2) 10" X 10"



**DC8483 SAGE  
SEA TREASURE**  
(2) 10" X 10"



**DC8480 SAGE  
CORAL HIDING**  
(2) 10" X 10"



**DC8482 GREEN  
JELLY FISH DANCE**  
(2) 10" X 10"



**DC8481 SAGE  
FISH BUBBLES**  
(2) 10" X 10"



**(BACKING)  
DC8486 BERRY  
LIGHT SEaweeds**  
1-1/3 YARDS\*

FABRIC REQUIREMENTS	
SKU	YARDAGE PER ONE QUILT
(A) DC8484-PEONY	3/4 YARD
(B) DC8479-GREEN	(2) 10" X 10" SQUARES
(C) DC8485-SAGE	(2) 10" X 10" SQUARES
(D) DC8483-SAGE	(2) 10" X 10" SQUARES
(E) DC8480-SAGE	(2) 10" X 10" SQUARES
(F) DC8482-GREEN	(2) 10" X 10" SQUARES
(G) DC8481-SAGE	(2) 10" X 10" SQUARES
(BACKING) DC8486-BERRY	1-1/3 YARDS*
*INCLUDES BINDING	

# SEA DREAMS COLLECTION

## «Beach day baby quilt» by Atelier de Cocopatch

### Cutting Instructions

- \* from 6 green fabrics : 12 x 10" squares
- \* from Plankton Peony ( DC 8484) 14 x half orange peel « 1 » and 34 x wedding ring « 2 »
- \* from Light Seaweeds\_Berry : 3 x WOF x 2 ¼ " for binding

### Assembly Instructions

- 1/ Sew the green squares row by row. Set aside.
- 3/ Draw the pieces « 1 » and « 2 » on the paper of your fusible webbing.
- 4/ Cut on the line and fuse your fabric (wrong side) with your iron without water, not too hot.
- 5/ Cut your fabric on the line. Take the paper away and place your piece in place on green fabrics and iron again.
- 6/ Sew all around edges of the pieces with a zigzag stitch or decorative stitch. Use a pink thread to make this stitch. Take care to stitch in one way as the picture below to have a continuous line.

