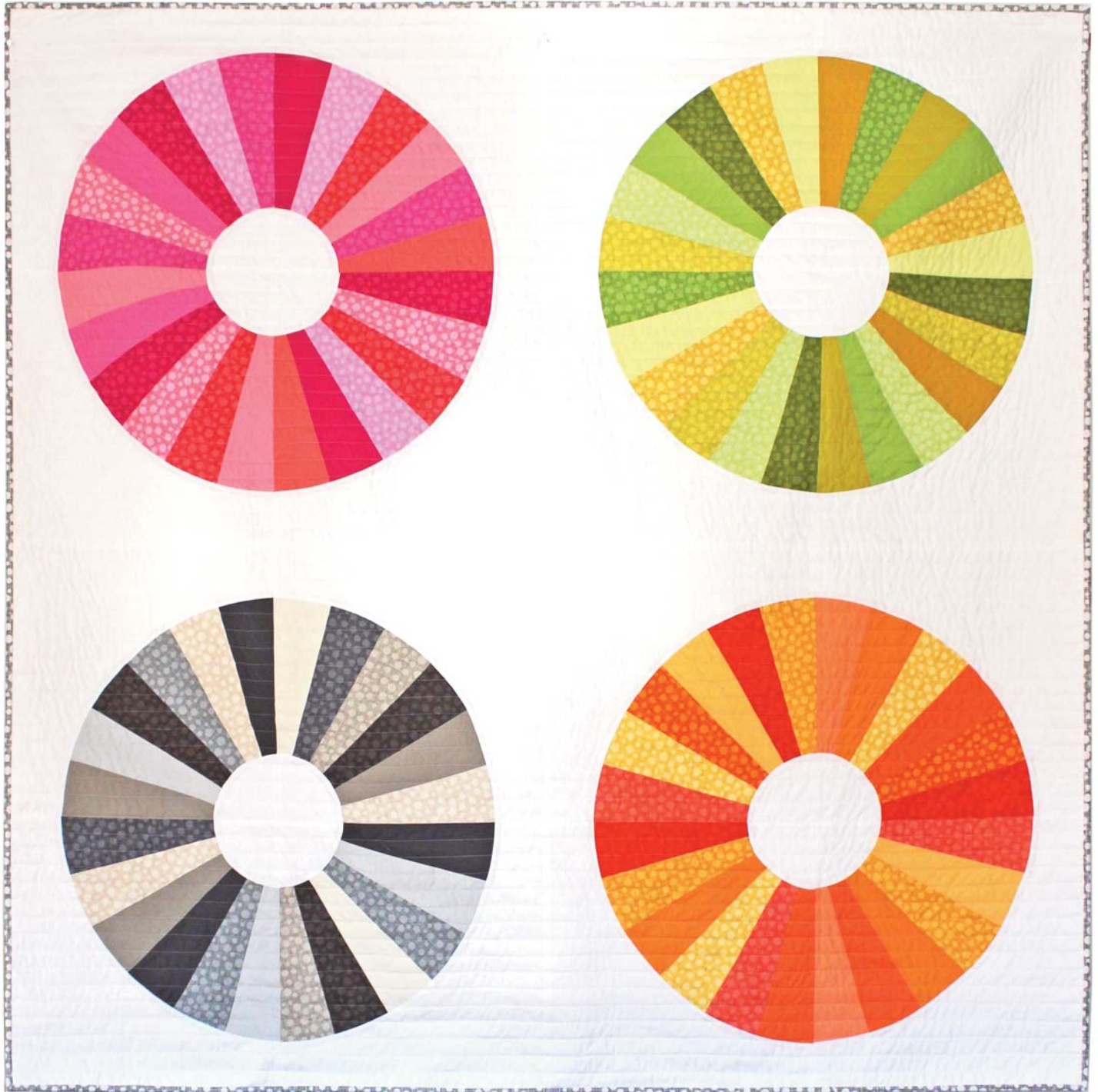


# Four Eyes Quilt





# Four Eyes Quilt

## Fabric Requirements

Skill Level: Intermediate

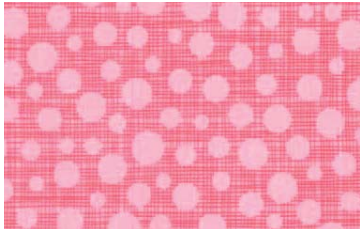
Completed Quilt: 62.5" x 62.5"

### PINKS

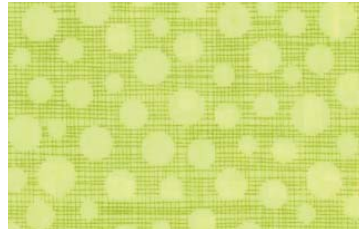
### GREENS

### GREYS

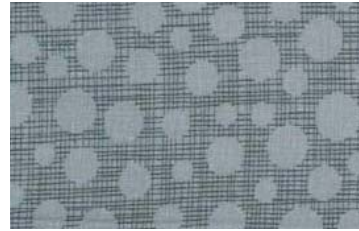
### ORANGES



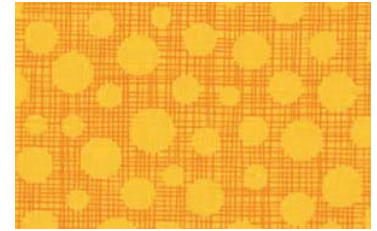
DC6699 Pink  
HASH DOT fat qtr



DC6699 Limeade  
HASH DOT fat qtr



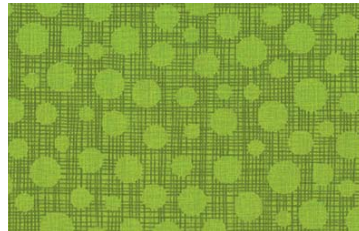
DC6699 Nickel  
HASH DOT fat qtr



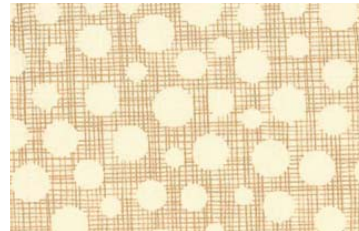
DC6699 Mustard  
HASH DOT fat qtr



DC6699 Berry  
HASH DOT fat qtr



DC6699 Meadow  
HASH DOT fat qtr



DC6699 Linen  
HASH DOT fat qtr



DC6699 Orange  
HASH DOT fat qtr



DC6699 Lipstick  
HASH DOT fat qtr



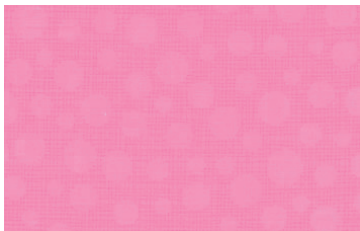
DC6699 Grass  
HASH DOT fat qtr



DC6699 Taupe  
HASH DOT fat qtr



DC6699 Yellow  
HASH DOT fat qtr



DC6699 Rose  
HASH DOT fat qtr



DC6699 Gold  
HASH DOT fat qtr



DC6699 Mud  
HASH DOT fat qtr



DC6699 Papaya  
HASH DOT fat qtr



DC6699 Fuschia  
HASH DOT fat qtr



DC6699 Pistachio  
HASH DOT fat qtr



DC6699 Pewter  
HASH DOT fat qtr



DC6699 Clementine  
HASH DOT fat qtr

Cont'd...

# Four Eyes Quilt

## Fabric Requirements

### PINKS

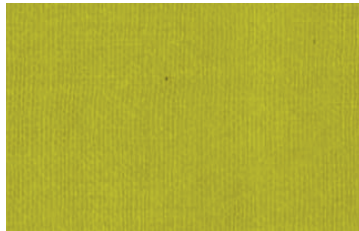
### GREENS

### GREYS

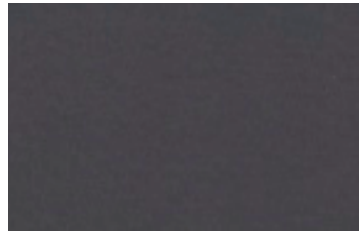
### ORANGES



SC5333 Princess fat qtr  
COTTON COUTURE



SC5333 Acid fat qtr  
COTTON COUTURE



SC5333 Charcoal fat qtr  
COTTON COUTURE



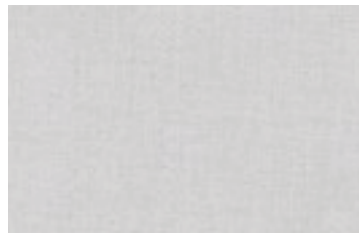
SC5333 Orange fat qtr  
COTTON COUTURE



SC5333 Magenta fat qtr  
COTTON COUTURE



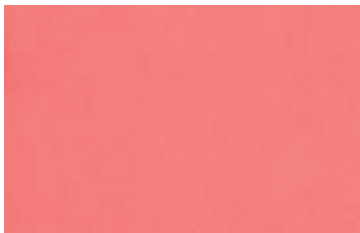
SC5333 Gold fat qtr  
COTTON COUTURE



SC5333 Nickel fat qtr  
COTTON COUTURE



SC5333 Mango fat qtr  
COTTON COUTURE



SC5333 Shell fat qtr  
COTTON COUTURE



SC5333 Pluto fat qtr  
COTTON COUTURE



SC5333 Cream fat qtr  
COTTON COUTURE



SC5333 Tangerine fat qtr  
COTTON COUTURE



SC5333 Bubblegum fat qtr  
COTTON COUTURE



SC5333 Kiwi fat qtr  
COTTON COUTURE



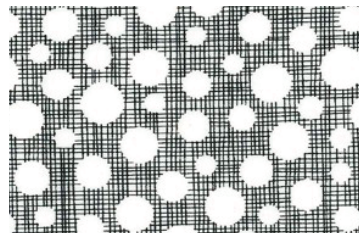
SC5333 Earth fat qtr  
COTTON COUTURE



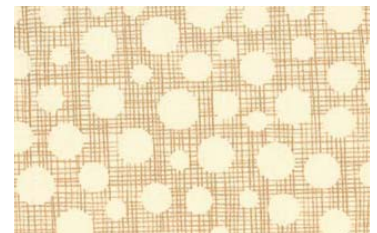
SC5333 Peach fat qtr  
COTTON COUTURE



SC5333 Bright White 2 Yards  
COTTON COUTURE



**BINDING FABRIC:**  
CX6699 Ebony 1/2 Yard  
HASH DOT



**BACKING FABRIC:**  
CX6699 Linen 4 Yards  
HASH DOT

### Also Needed:

- 66" x 66" quilt batting.
- A rotary cutter, a long acrylic ruler, a cutting mat, thread, scissors, pins, paper for printing templates.



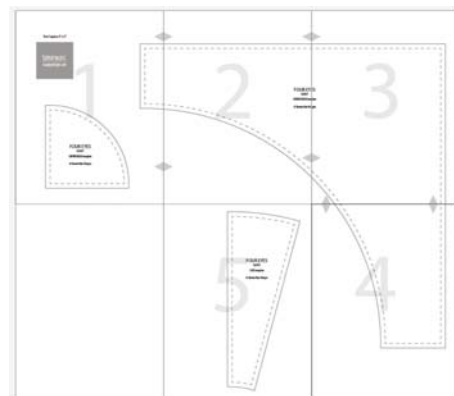
# Four Eyes Quilt

## Template Printing:

- Print the accompanying 5-page PDF template document following these instructions:
- Page size is 8.5" x 11"
- Select File, then Print.
- Set Page Scaling to "None" (do not select "Shrink to Fit"), then Print.

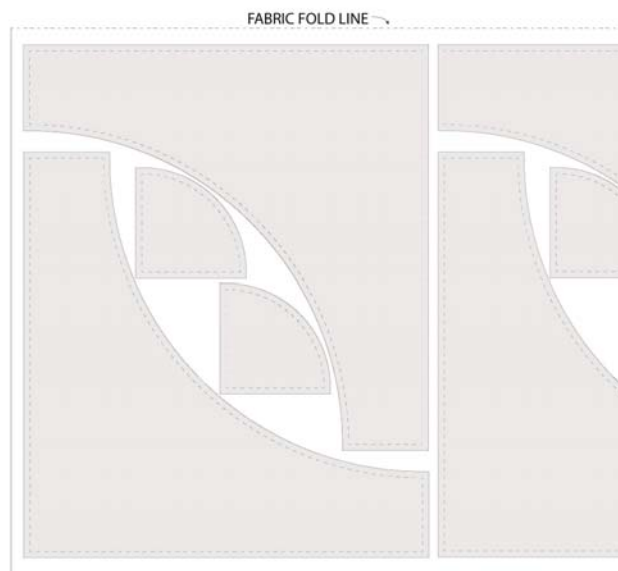
Cut off the page borders on Pages 1-4. Tape these 4 pages together as indicated in the image here, aligning the small grey triangles (along edges) as shown. Page 5 does not need to be attached to the others.

The 3 individual templates should be cut out along the solid lines. The dashed line indicates sewing lines.



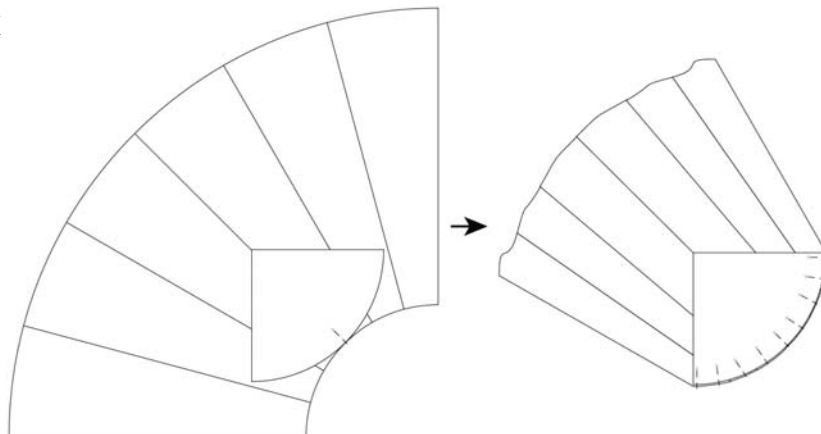
## Cutting Instructions:

- BINDING FABRIC: Cut 7 strips 2¼" x WOF. Set aside for binding.
- BACKING FABRIC: Cut 2 pieces 66" long. Set aside for backing.
- All coloured fabrics: Using the SLICE Template, cut 3 pieces from each fabric. Cut just along the edge of the template, using a ruler over top of the Template along straight edges.
- SC5333 Brt White: Fold fabric in half lengthwise. Using the CORNER BLOCK Template, cut 16 pieces as indicated in the image here. Using the CENTER BLOCK Template, cut 16 pieces as indicated in the image here.



## Construction:

- \* All seam allowances are 1/4".
- \* The quilt is made up of 4 circles, each consisting of a colour-group of 24 SLICES, 4 CENTRE BLOCKS & 4 CORNER BLOCKS. The colour-groups are PINKS, GREENS, GREYS & ORANGES, as indicated on the 2 Fabric Requirement pages. Refer to these groups when building the quilt.
- \* Refer to the Block Assemble Diagram (following page) when constructing the quilt.
- Choose 24 SLICES from each colour-group (you will have 3 left over from each group to use in another project) and lay them out in a circle, randomly (6 per quarter).
- For each quarter, with right sides together (RST), sew 2 adjacent slices together along one long edge. Press seam open. Continue adding 4 remaining adjacent slices, pressing seams open.
- Find the centre point of the curved edge of the CENTRE BLOCK (by temporarily folding the piece in half) & mark point. Lay the Centre Block on top of the sewn SLICES, RST, pinning the marked point to the centre seam of the SLICES.
- Pin each end of the curved edge of the CENTRE BLOCK to the ends of the curved edge of the sewn SLICES (this takes a bit of fiddling with the fabrics). Continue pinning along the curved edge. The more pins, the more accurate your curve will be sewn. Slowly sew the seam, adjusting the bulk of the sewn SLICES as you go to avoid catching any extra fabric in the seam. Remove all pins & flip CENTRE BLOCK to its correct position. Press seams toward the CENTRE BLOCK.
- Repeat this process with the CORNER BLOCK, again pinning thoroughly along the curved edge. Press seams toward the CORNER BLOCK.

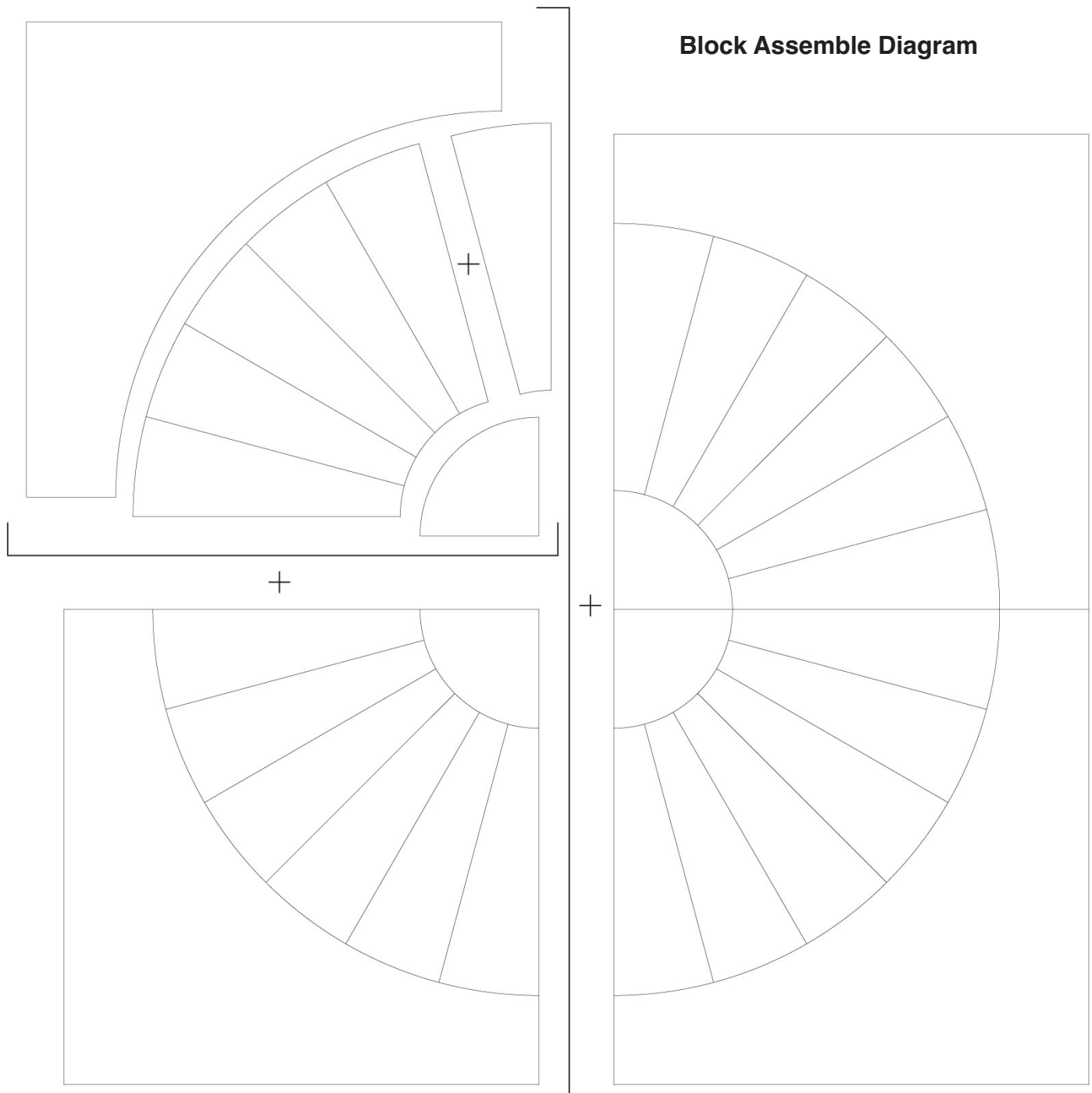


# Four Eyes Quilt

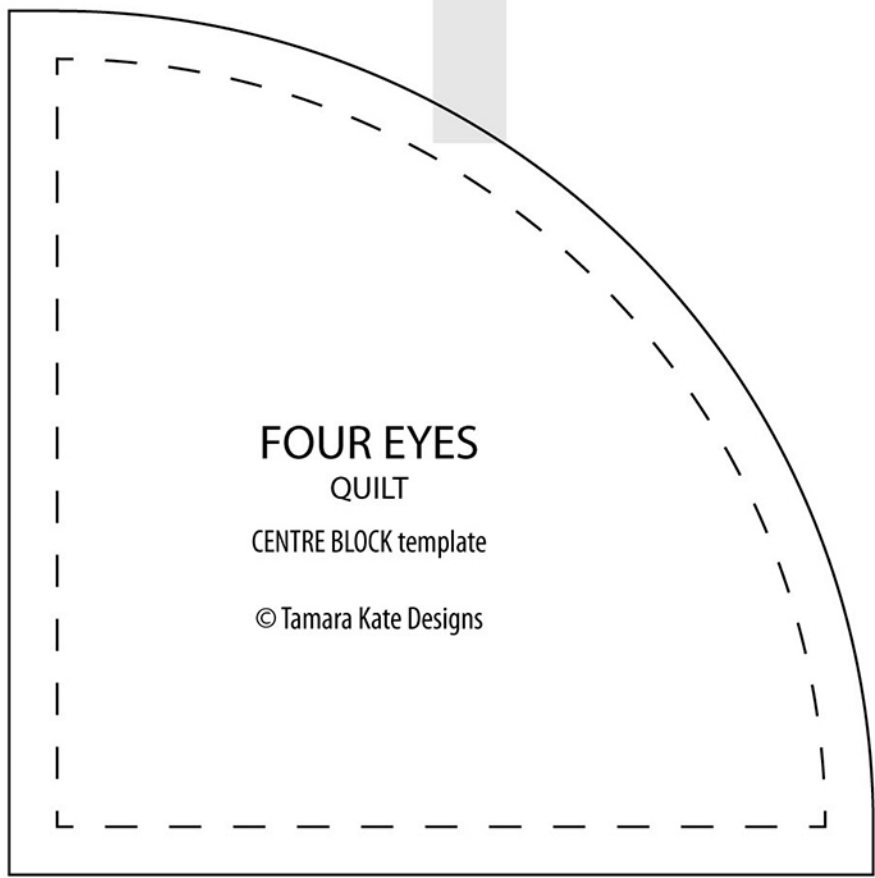
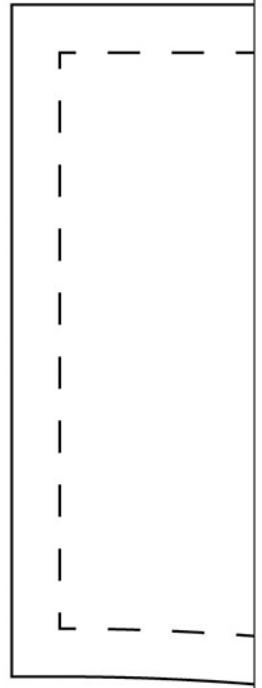
- Repeat this quarter-block with the other 3 quarters. Square up quarter-blocks as necessary.
- RST, sew 2 quarter-blocks together. Press seams open. Sew together the 2 resulting half-blocks. Square up the resulting circle-blocks as necessary.
- Repeat this process with the remaining 3 circles. Sew 2 circle-blocks together. Repeat with other 2, then sew 2 pairs together.

## Assembling Quilt:

Sew together two backing pieces along the long edges. Press seam open. Cut to 66" square.  
Layer backing, batting and quilt top. Baste or pin. Quilt as desired. Square up quilt top.  
Join binding strips together and bind in your preferred fashion.



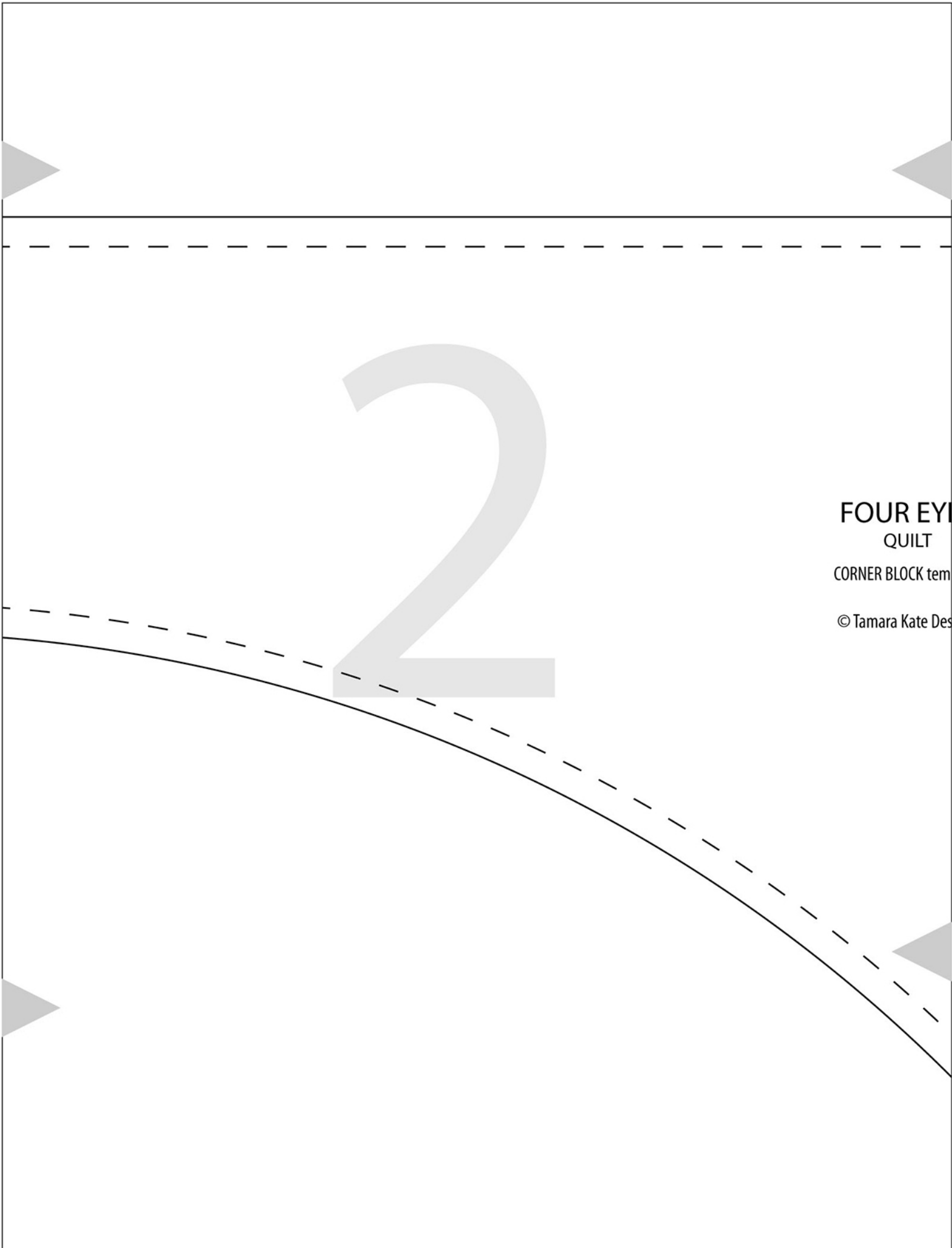
Test Square 2" x 2"



**FOUR EYES**  
QUILT

CENTRE BLOCK template

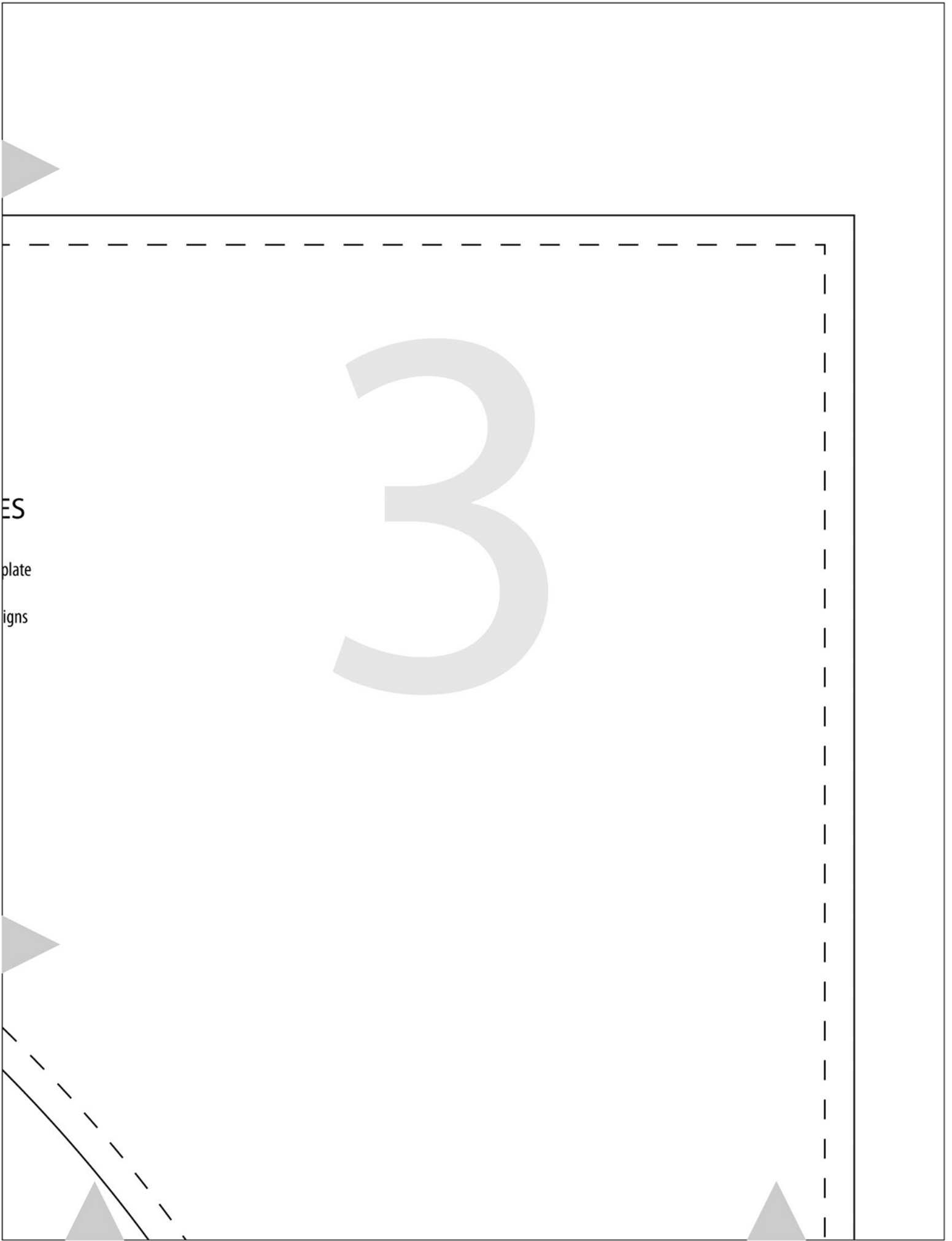
© Tamara Kate Designs



**FOUR EYE**  
QUILT

CORNER BLOCK tem

© Tamara Kate Des



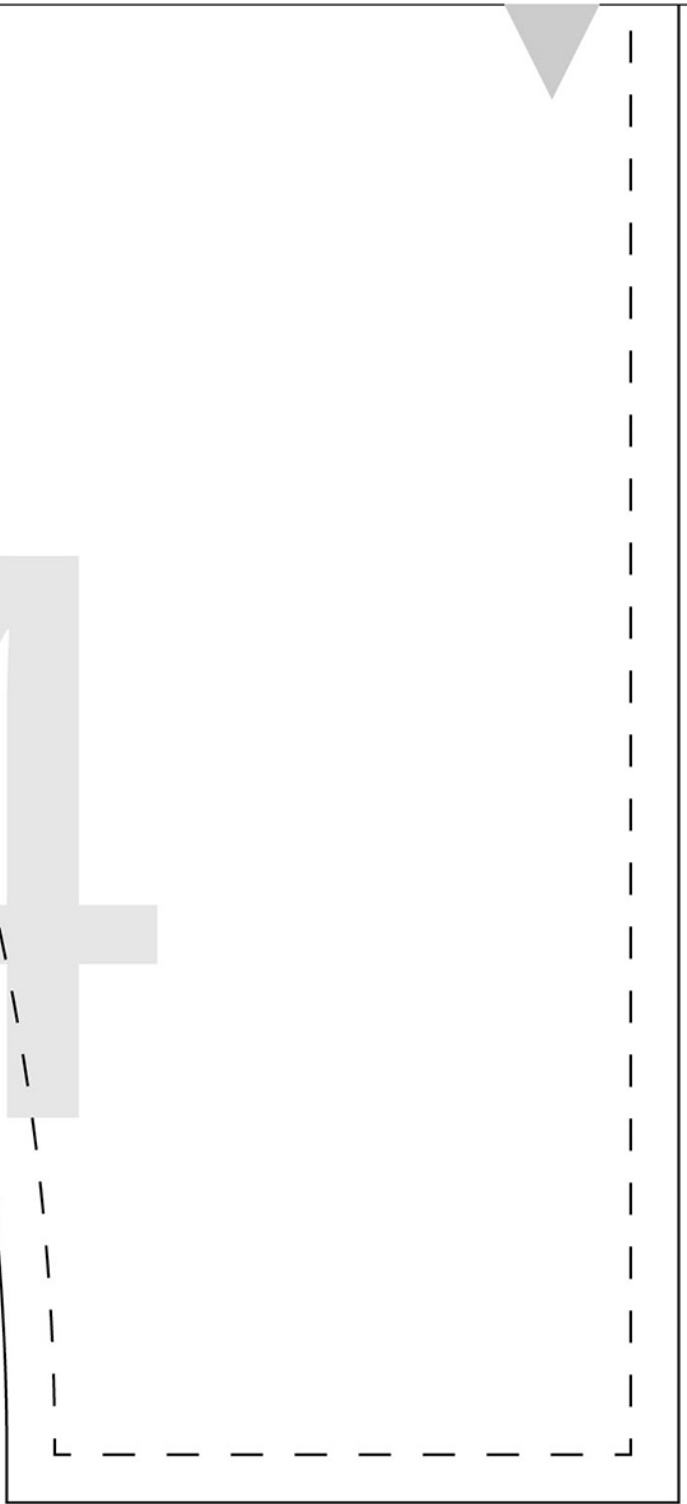
ES

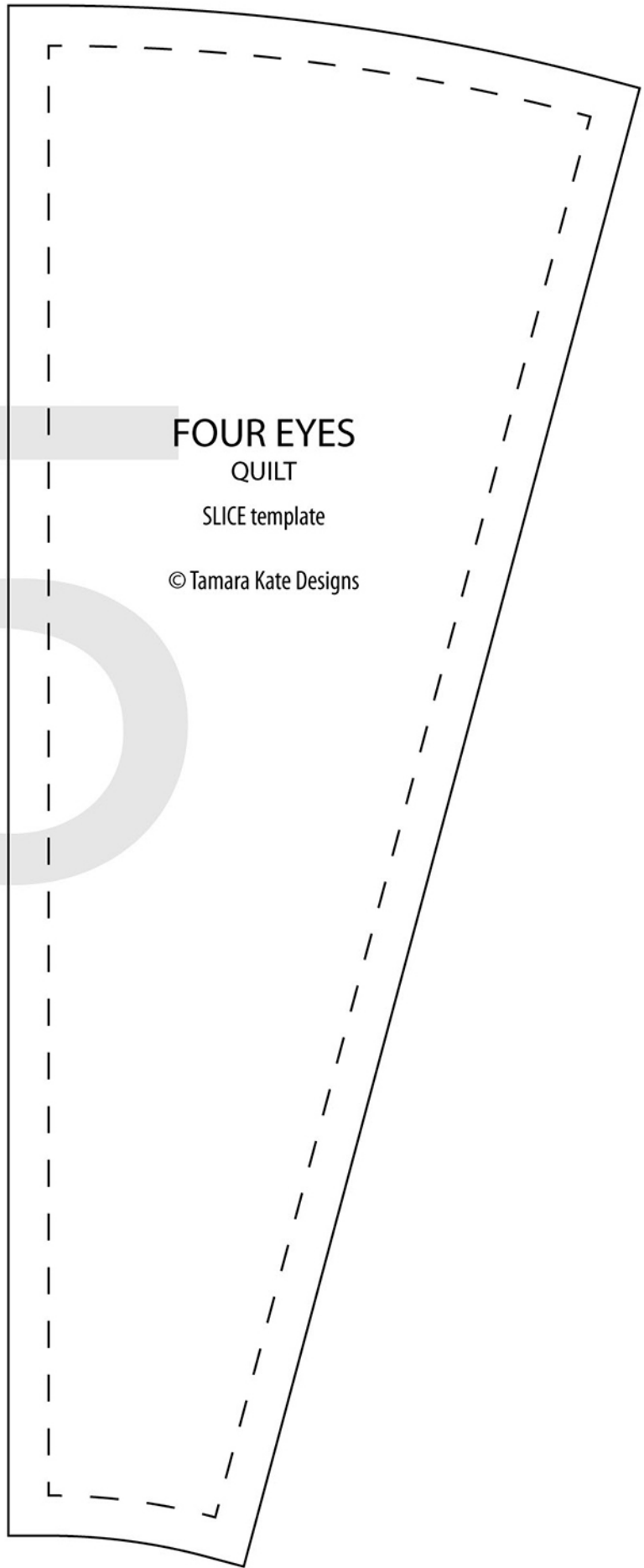
plate

igns



4





5

**FOUR EYES**

QUILT

SLICE template

© Tamara Kate Designs