

michael miller FABRICS

AUTUMN HARVEST *Quilt*

Size: 41 1/2" x 55 1/2" | Design by: Marinda Stewart | Level: CONFIDENT BEGINNER



Free Pattern available on michaelmillerfabrics.com



FABRIC REQUIREMENTS



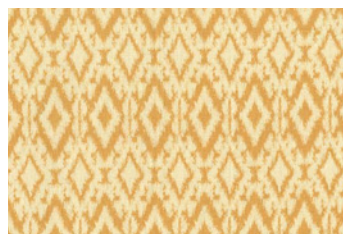
DC8162 Wheat
Autumn Bouquet
1 3/8 yard



DC8161 Wheat
Bittersweet Berries
1/4 yard



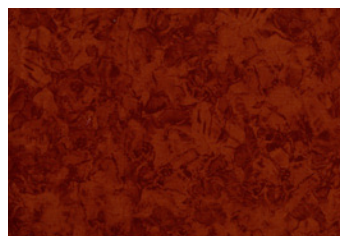
DC8160 Wheat
Harvest Bounty
1/4 yard



DC7529 Sand
Taos Texture
3/4 yard



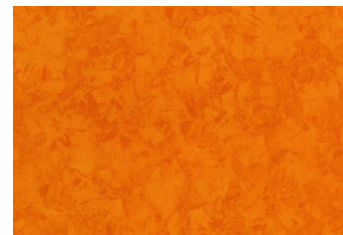
K1124 Honey
Krystal
Fat 1/8



K2115 Rust
Krystal
1/2 yard



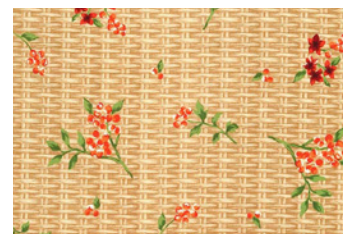
CM0376 Wildberry
Fairy Frost
1/6 yard



K4125 Orange
Krystal
Fat 1/8



K1149 Cherry
Krystal
Fat 1/8



DC8161 Wheat
Bittersweet Berries
2 5/8 yards-Optional Backing

Kit Info	12 Kits	24 Kits
DC8162 Wheat	16 1/2 yards (2 bolt)	33 yards (3 bolts)
DC8161 Wheat	3 yards (1 bolt)	6 yards (1 bolt)
DC8160 Wheat	3 yards (1 bolt)	6 yards (1 bolts)
CM0376 Wildberry	2 yards (1 bolt)	4 yards (1 bolts)
DC7529 Sand	9 yards (1 bolt)	18 yards (2 bolt)
K4125 Orange	6 yards (1 bolt)	12 yards (1 bolt)
K1124 Honey	1 1/2 yards (1 bolt)	3 yards (1 bolt)
K1149 Cherry	1 1/2 yards (1 bolt)	3 yards (1 bolt)
K2115 Rust	1 1/2 yards (1 bolt)	3 yards (1 bolt)
OPTIONAL: DC8161 Wheat (For Backing)	31 1/2 yards (3 bolt)	63 yards (5 bolts)

Autumn Harvest
 Quilt designed by Marinda Stewart
 Size: 41 1/2" x 55 1/2"
 Skill Level: Confident Beginner

Fabrics	Yardage	Cutting
DC8162 Wheat Autumn Bouquet	1 3/8 yards	(1) 16 1/2" x 48 1/2" (2) 3 3/4" x 49 1/2" ** (2) 3 3/4" x 41 1/2"
DC8161 Wheat Bittersweet Berries	1/4 yard	(4) 2" x W.O.F.
DC8160 Wheat Harvest Bounty	1/4 yard	(4) 2" x W.O.F.
CM0376 Wildberry Fairy Frost	1/6 yard	(2) 1" x 34 1/2" (2) 1" x 49 1/2" ***
DC7529 Sand Taos Texture	3/4 yard	(4) 1 1/4" x 6 1/2" (14) 2" x 6 1/2" (16) 2" x 5" (32) 2" squares (32) 2 1/2" squares
K4125 Orange Krystal	Fat 1/8	(8) 2 1/2" squares (12) 2" squares
K1124 Honey Krystal	Fat 1/8	(8) 2 1/2" squares (12) 2" squares
K1149 Cherry Krystal	Fat 1/8	(8) 2 1/2" squares (12) 2" squares
K2115 Rust Krysta	1/2 yard	(8) 2 1/2" squares (12) 2" squares (5) 2 1/2" x W.O.F. - binding
Optional Backing: DC8161 Wheat Bittersweet Berries	2 5/8 yards	(1) 62" x W.O.F. (2) 22" W x 31" H

Also Needed: 46" x 62" batting, thread to match, scissors, straight pins, rotary cutter, acrylic ruler, and mat.

* Center on border

** From remaining all-over print
*** Pieced for length

Directions:

1. Sew (1) DC8161 2" x W.O.F. strip right sides together with (1) DC8160 2" x W.O.F. strip. Make (4) strip sets. Cut across one strip every 2" to make a total of (64) pieces. Sew together (32 pieces in an alternating checkerboard pattern as shown. Make (2) stripes 48 1/2" x 3 1/2". Sew one strip to each side of the DC8162 16 1/2" x 48 1/2" piece. Set aside.

2. For one leaf block: Place one K1124 2 1/2" square right sides together on top of one DC7529 2 1/2" square. Draw a diagonal line from corner to corner. Stitch 1/4" on each side of the drawn line. Cut apart on the line. Press. Yield (2) right square triangle piece (RST). Trim each to an accurate 2" square. Repeat with a second set to make a total of (4) RST.

For row #1 - sew (1) DC7529 2" square and (2) RST. Set aside.

For row #2 - (1) RST and (2) K1124 2" squares. Sew to the bottom of row #1 as shown.

For row #3 - (1) RST, (1) K1124 square, and (1) DC7529 2" square. Sew to the bottom of row #2. Using brown thread, machine satin stitch the stem of the leaf as shown - One leaf block made. Make (4) K1124, (4) K1149, (4) K2115, and (4) K4125.

3. Sew one DC7529 2" x 5" piece to one side of each 5" leaf block. Randomly pick a side. They need to be different.

4. Begin and end with a DC7529 1 1/4" x 6 1/2" piece. Sew together (8) leaf blocks with a DC7529 piece between each. Alternate the side with a DC7529 piece to create a 'tossed' look to the leaves as shown. Make (2) strips 6 1/2" x 48 1/2". Sew one strip to each side of the center panel.

5. Sew one CM0376 1" x 34 1/2" piece to the top and bottom of the quilt. Sew one CM0376 1" x 49 1/2" piece to the (pieced for length) to each side of the quilt.

6. Sew (1) DC8162 3 3/4" x 49 1/2" piece to each side of the center panel. Sew (1) DC8162 3 3/4" x 41 1/2" piece to the top and bottom of the quilt.

7. OPTIONAL BACKING - Remove all selvage edges from DC8161. Sew (2) DC8161 22" x 31" pieces right sides together to make (1) 22" x 61 1/2" piece.. Sew pieced strip to one side of the DC8161 62" x W.O.F. piece to make backing.

8. Layer backing, batting, and quilt top. Baste.

9. Quilt as desired.
10. Bind quilt using K2115 2 1/2" strips pieced as needed for length.

KIT INFO

	12 Kits	24 Kits
DC8162 Wheat	16 1/2 yards - 2 bolts	33 yards - 3 bolts
DC8161 Wheat	3 yards - 1 bolt	6 yards - 1 bolt
DC8160 Wheat	3 yards - 1 bolt	6 yards - 1 bolt
CM0376 Wildberry	2 yards - r 1 bolt	4 yards - 1 bolt
DC7529 Sand	9 yards - 1 bolt	18 yards - 2 bolts
K2115 Rust	6 yards - 1 bolt	12 yards - 1 bolt
K1124 Honey	1 1/2 yards - 1 bolt	3 yards - 1 bolt
K1149 Cherry	1 1/2 yards - 1 bolt	3 yards - 1 bolt
K4125 Orange	1 1/2 yards - 1 bolt	3 yards - 1 bolt
Optional Backing DC8161 Wheat	31 1/2 yards - 3 bolts	63 yards - 5 bolts