

michael miller FABRICS

# ISABELLA Quilt

SIZE 52"W X 68-1/4"H | LEVEL INTERMEDIATE | DESIGNED BY LILY ASHBURY



FREE PATTERN AVAILABLE ON [MICHAELMILLERFABRICS.COM](http://MICHAELMILLERFABRICS.COM)

# FABRIC REQUIREMENTS

WE DO OUR BEST TO MAKE SURE THESE ARE ACCURATE YARDAGES  
BUT THESE ARE ESTIMATES UNTIL THE FINAL PATTERN IS COMPLETED AND EDITED. THANK YOU.



DC7953 BLUE  
HALEY  
FAT QUARTER



DC7952 PROVENCE  
ENYA  
FAT QUARTER



DC7951 GARDEN  
IZZI  
FAT QUARTER



DC7953 PINK  
HALEY  
FAT QUARTER



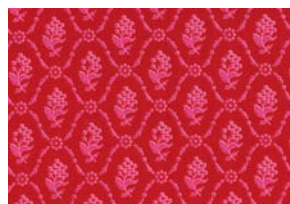
DC7951 BORDEAUX  
IZZI  
FAT QUARTER



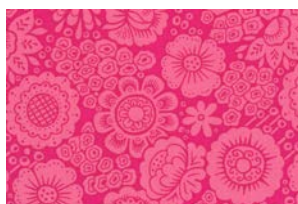
DC7955 MOSS  
KATIE  
FAT QUARTER



DC7954 WEDGEWOOD  
CLAIRE  
FAT QUARTER



DC7954 BORDEAUX  
CLAIRE  
FAT QUARTER



DC7806 CERISE\*  
KAYLA  
1 YARD (INCLUDES BINDING)



DC7952 OLIVE  
ENYA  
3/4 YARD



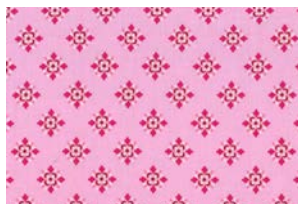
DC7952 MOSS  
ENYA  
FAT QUARTER



DC7956 CERISE  
VANESSA  
FAT QUARTER



DC7956 OLIVE  
VANESSA  
FAT QUARTER



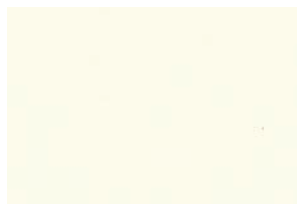
DC7955 PINK  
KATIE  
7/8 YARD



DC7954 CERISE  
CLAIRE  
3/8 YARD



DC7952 BLUE  
ENYA  
3/8 YARD



SC5333 CREAM  
COTTON COUTURE  
3 YARDS



DC7956 PROVENCE  
VANESSA  
3-1/2 YARDS

## FABRIC REQUIREMENTS

### SKU

(A) DC7953-BLUE  
(B) DC7952-PROVENCE  
(C) DC7951-GARDEN  
(D) DC7953-PINK  
(E) DC1221-BORDEAUX  
(F) DC7955-MOSS  
(G) DC7954-WEDGEWOOD  
(H) DC7954-BORDEAUX  
(I) DC7806-CERISE\*  
(J) DC7952-OLIVE  
(K) DC7952-MOSS  
(L) DC7956-CERISE  
(M) DC7956-OLIVE  
(N) DC7955-PINK  
(O) DC7954-CERISE  
(P) DC7952-BLUE  
(Q) SC5333-CREAM  
(BACKING) DC7956-PROVENCE

### YARDAGE PER ONE QUILT

FAT QUARTER  
FAT QUARTER  
FAT QUARTER  
FAT QUARTER  
FAT QUARTER  
FAT QUARTER  
FAT QUARTER  
FAT QUARTER  
1 YARD  
3/4 YARD  
FAT QUARTER  
FAT QUARTER  
FAT QUARTER  
FAT QUARTER  
7/8 YARD  
3/8 YARD  
3/8 YARD  
3 YARDS  
3-1/2 YARDS

### # OF BOLTS FOR 12 KITS

1 BOLT (3 YARDS)  
1 BOLT (3 YARDS)  
1 BOLT (3 YARDS)  
1 BOLT (3 YARDS)  
1 BOLT (3 YARDS)  
1 BOLT (3 YARDS)  
1 BOLT (3 YARDS)  
1 BOLT (3 YARDS)  
1 BOLT (12 YARDS)  
1 BOLT (9 YARDS)  
1 BOLT (3 YARDS)  
1 BOLT (3 YARDS)  
1 BOLT (3 YARDS)  
1 BOLT (10-1/2 YARDS)  
1 BOLT (4-1/2 YARDS)  
1 BOLT (4-1/2 YARDS)  
3 BOLTS (36 YARDS)  
3 BOLTS (42 YARDS)

### # OF BOLTS FOR 24 KITS

1 BOLT (6 YARDS)  
1 BOLT (6 YARDS)  
1 BOLT (6 YARDS)  
1 BOLT (6 YARDS)  
1 BOLT (6 YARDS)  
1 BOLT (6 YARDS)  
1 BOLT (6 YARDS)  
1 BOLT (6 YARDS)  
2 BOLTS (24 YARDS)  
2 BOLTS (18 YARDS)  
1 BOLT (6 YARDS)  
1 BOLT (6 YARDS)  
1 BOLT (6 YARDS)  
1 BOLT (6 YARDS)  
2 BOLTS (21 YARDS)  
1 BOLT (9 YARDS)  
1 BOLT (9 YARDS)  
6 BOLTS (72 YARDS)  
6 BOLTS (84 YARDS)

### TOTAL BOLTS NEEDED

**22 BOLTS (19 W/O BACK)**

**31 BOLTS (25 W/O BACK)**

\*INCLUDES BINDING

---

*Please read all instructions before starting. Measurement on borders are approximate. Measure your quilt top before cutting.  
Use a 1/4" seam allowance unless otherwise noted. Width of Fabric = WOF, Length of Fabric = LOF*

## Cutting Instructions:

**From Haley – Blue (A), cut:**

- (2) Template 1 ovals.

**From Enya – Provence (B), cut:**

- (3) Template 1 ovals.

**From Izzi – Garden (C), cut:**

- (2) Template 1 ovals.

**From Haley – Pink (D), cut:**

- (3) Template 1 ovals.

**From Izzi – Bordeaux (E), cut:**

- (3) Template 1 ovals.

**From Katie – Moss (F), cut:**

- (1) Template 1 oval.

**From Claire – Wedgewood (G), cut:**

- (2) Template 1 ovals.

**From Claire – Bordeaux (H), cut:**

- (2) Template 1 ovals.

**From Kayla – Cerise (I), cut:**

- (1) 3" x WOF strip. Sub-cut (4) 3" squares.
- (1) Template 1 oval.
- (10) Template 2 corners.
- (7) 2 1/2" x WOF strips for the binding.

**From Enya – Olive (J), cut:**

- (4) 3" x WOF strips. Sew the strips together end to end with diagonal seams and cut (2) 3" x 63 3/4" strips.
- (3) 3" x WOF strips. Sew the strips together end to end with diagonal seams and cut (2) 3" x 47 1/2" strips.
- (1) Template 1 oval.



## Cutting Instructions - Continued:

### From Enya – Moss (K), cut:

- (2) Template 1 ovals.

### From Vanessa – Cerise (L), cut:

- (2) Template 1 ovals.

### From Vanessa – Olive (M), cut:

- (1) Template 1 oval.

### From Katie – Pink (N), cut:

- (59) Template 2 corners.

### From Claire – Cerise (O), cut:

- (15) Template 2 corners.

### From Enya – Blue (P), cut:

- (16) Template 2 corners.

### From Cream (Q), cut:

- (9) 9 ½" x WOF strips. Sub-cut (25) 9 ½" x 12 ¾" strips.
- (4) 1 ½" x WOF strips. Sew the strips together end to end with diagonal seams and cut (2) 1 ½" x 61 ¾" strips.
- (3) 1 ½" x WOF strips. Sew the strips together end to end with diagonal seams and cut (2) 1 ½" x 47 ½" strips.

### From Vanessa – Provence (Backing), cut:

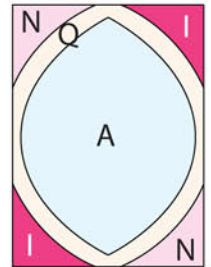
- (2) 60" x WOF strips for the backing. Sew the strips together and trim to make the 60" x 77" back.



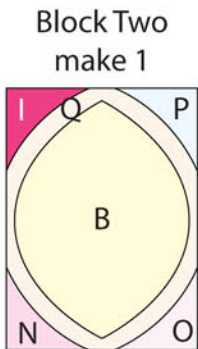
## Block Assembly Instructions:

1. Following the manufacturer's instructions, trace the listed number of each template onto the paper side of the fusible web. Roughly cut out each template about 1/8" outside the drawn lines.
2. Press each template onto the wrong side of the fabrics as listed on the templates. Cut out each template on the drawn lines.
3. Refer to Figure 1 to arrange and press the (4) assorted corner pieces and (1) Fabric A oval onto (1) 9 1/2" x 12 3/4" Fabric Q strip.
4. Finish the raw edges of each shape with a decorative stitch such as a buttonhole or satin stitch to make (1) Block One rectangle.
5. Repeat Steps 3-4 and use Figures 2-23 for fabric identification and location to make the designated number of Blocks. There will be (25) blocks total. Note that a second block is made for Block Five and Block Seven.

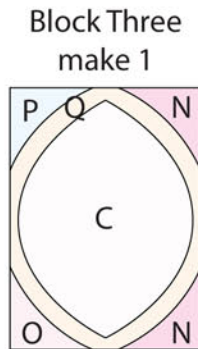
Block One  
make 1



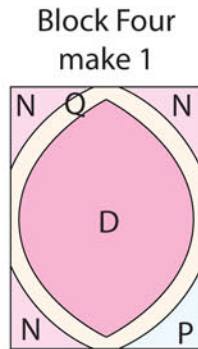
**Fig. 1**



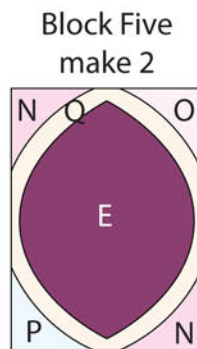
**Fig. 2**



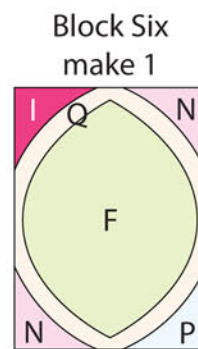
**Fig. 3**



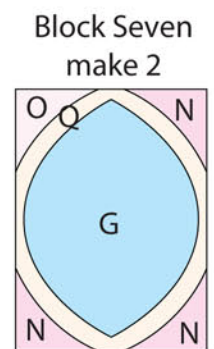
**Fig. 4**



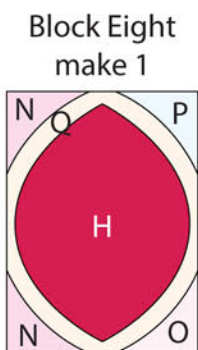
**Fig. 5**



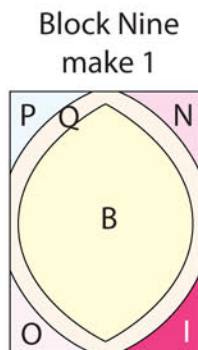
**Fig. 6**



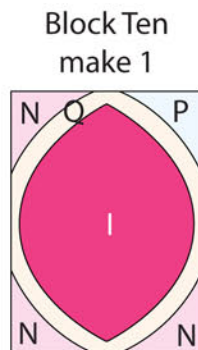
**Fig. 7**



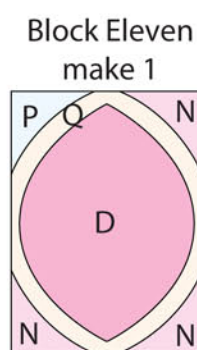
**Fig. 8**



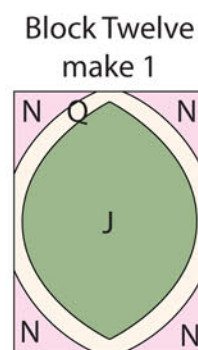
**Fig. 9**



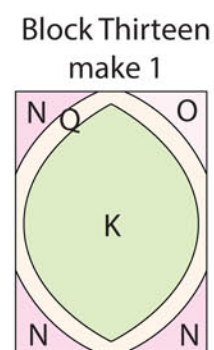
**Fig. 10**



**Fig. 11**



**Fig. 12**



**Fig. 13**



Block Fourteen  
make 1

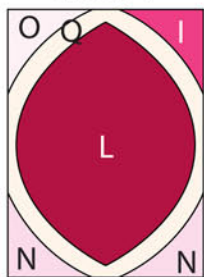


Fig. 14

Block Fifteen  
make 1

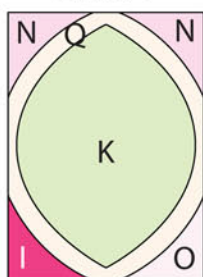


Fig. 15

Block Sixteen  
make 1

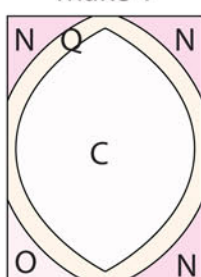


Fig. 16

Block Seventeen  
make 1

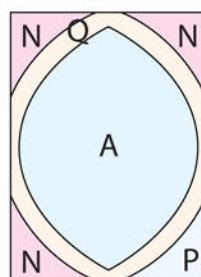


Fig. 17

Block Eighteen  
make 1

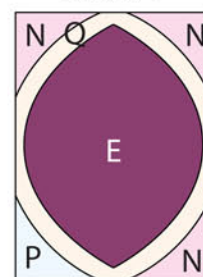


Fig. 18

Block  
Nineteen  
make 1

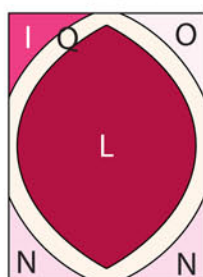


Fig. 19

Block  
Twenty  
make 1

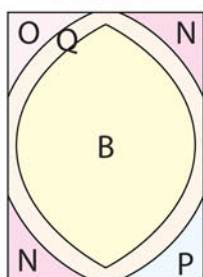


Fig. 20

Block  
Twenty-One  
make 1

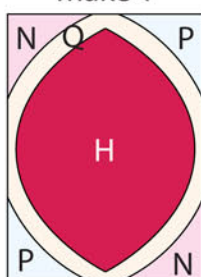


Fig. 21

Block  
Twenty-Two  
make 1

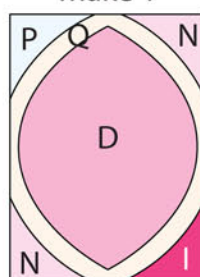


Fig. 22

Block  
Twenty-Three  
make 1

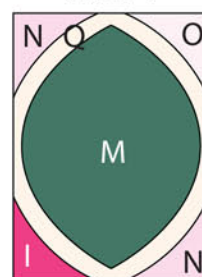
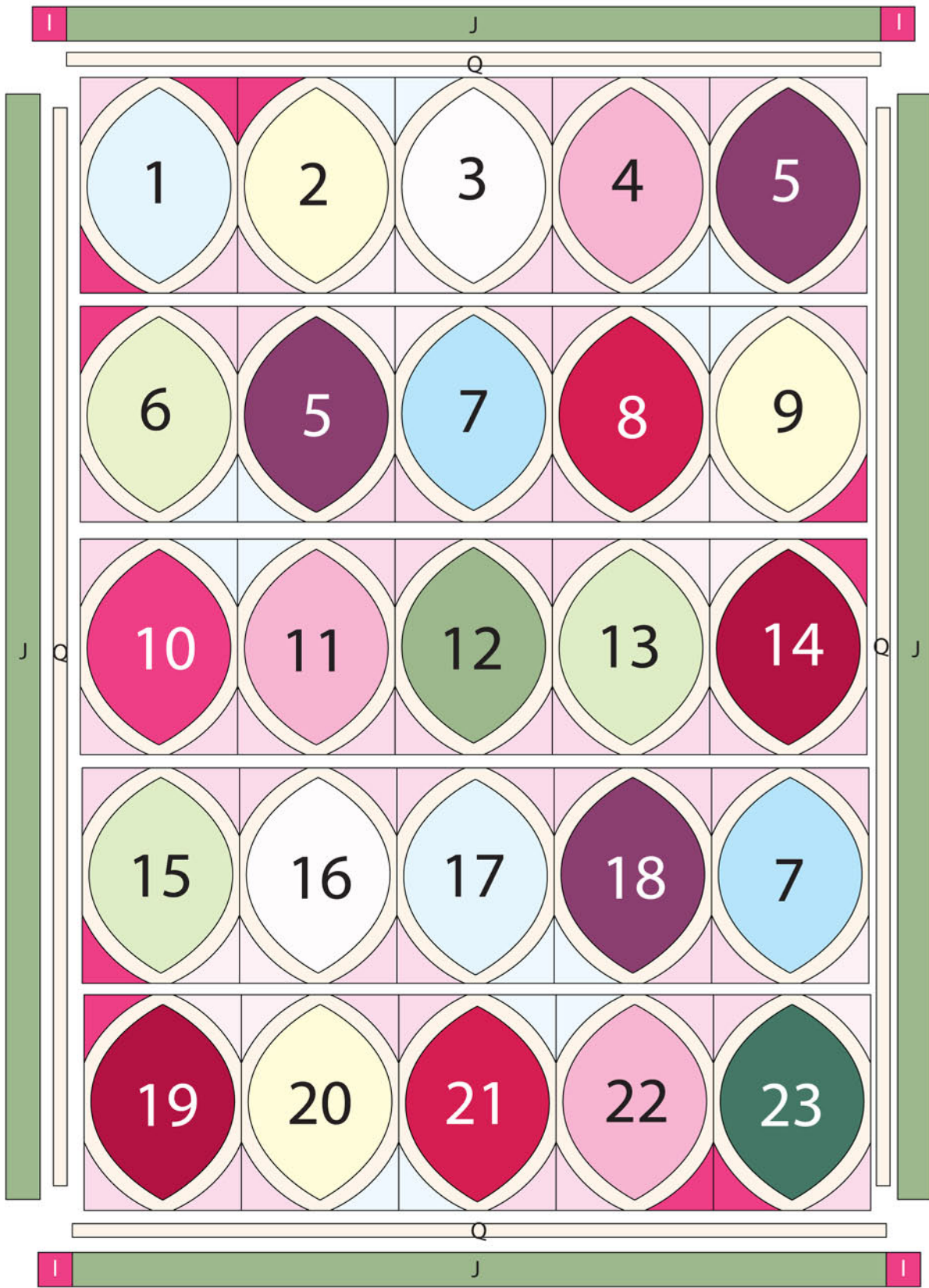


Fig. 23

**Quilt Top Assembly: Refer to the Quilt Layout while assembling.**

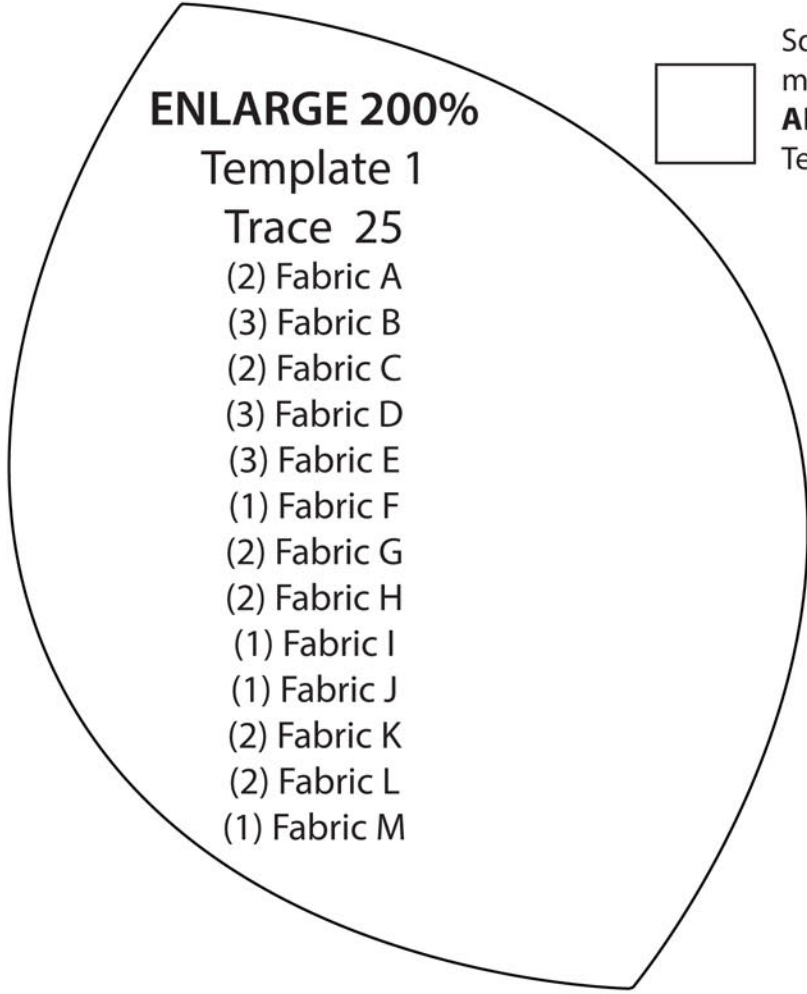
6. Sew (5) assorted blocks together to make (1) row. Repeat to make (5) rows total.
7. Sew the (5) rows together to make the Center Block.
8. Sew (1) 1 ½" x 61 ¾" Fabric Q strip to each side of the Center Block. Sew (1) 1 ½" x 47 ½" Fabric Q strip to the top and to the bottom of the Center Block.
9. Sew (1) 3" x 63 ¾" Fabric J strip to each side of the Center Block. Sew (1) 3" Fabric I square to each end of (1) 3" x 47 ½" Fabric J strip. Repeat to make a second strip. Sew the strips to the top and to the bottom of the Center Block to make the quilt top.
10. Layer and quilt as desired.
11. Sew the (7) 2 ½" x WOF Fabric I strips together, end to end with 45-degree seams, to make the binding. Fold this long strip in half lengthwise with wrong sides together and press.
12. Bind as desired.





Quilt Layout





**ENLARGE 200%**

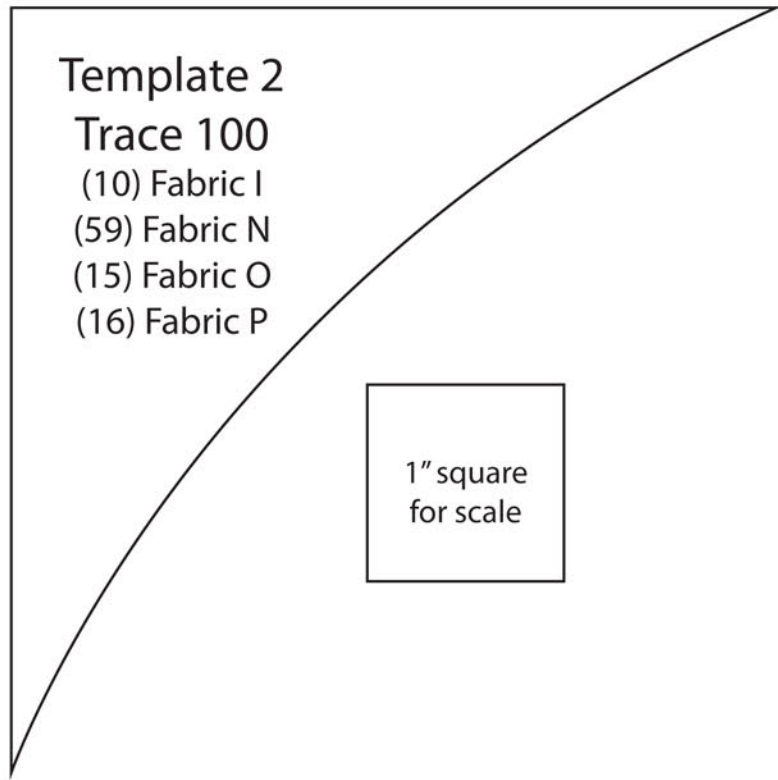
**Template 1**

**Trace 25**

- (2) Fabric A
- (3) Fabric B
- (2) Fabric C
- (3) Fabric D
- (3) Fabric E
- (1) Fabric F
- (2) Fabric G
- (2) Fabric H
- (1) Fabric I
- (1) Fabric J
- (2) Fabric K
- (2) Fabric L
- (1) Fabric M



Square should  
measure 1"  
**AFTER** enlarging  
Template 1 200%



**Template 2**

**Trace 100**

- (10) Fabric I
- (59) Fabric N
- (15) Fabric O
- (16) Fabric P



1" square  
for scale

