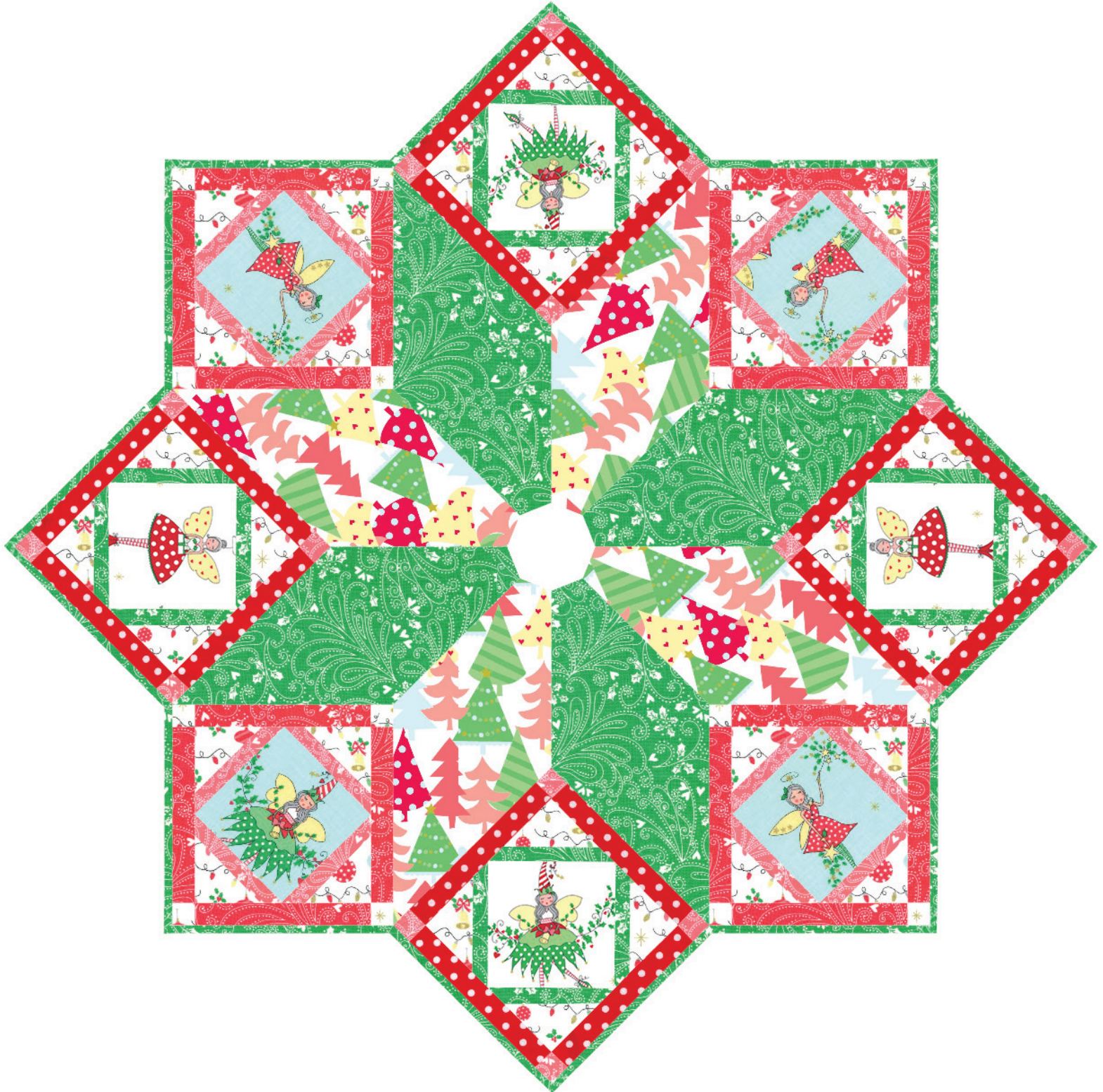


michael miller FABRICS

# HOLLYWOOD PIXIE TREE SKIRT

Size: 50" Diameter | Designed by: Marsha Moore | Level: Confident Beginner



FREE PATTERN AVAILABLE ON [MICHAELMILLERFABRICS.COM](http://MICHAELMILLERFABRICS.COM)



# FABRIC REQUIREMENTS

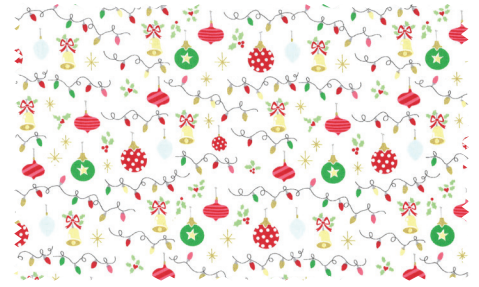
WE DO OUR BEST TO MAKE SURE THESE ARE ACCURATE YARDAGES BUT THESE ARE ESTIMATES UNTIL THE FINAL PATTERN IS COMPLETED AND EDITED. THANK YOU.



**CM8016 HOLLYBERRY  
HOLLYWOOD PIXIES**  
1/2 YARD



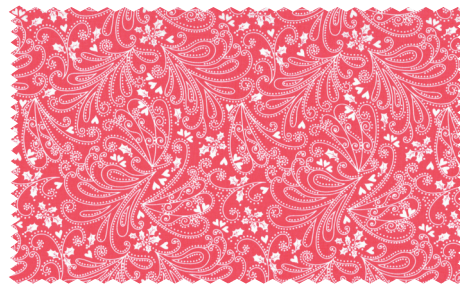
**CM8016 WINTER  
HOLLYWOOD PIXIES**  
1/2 YARD



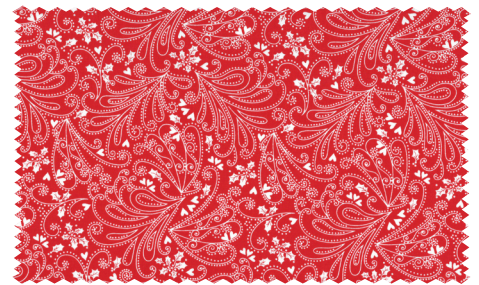
**CM8018 HOLLYBERRY  
PIXIE ORNAMENTS**  
1/2 YARD



**CM8020 HOLLYBERRY  
PIXIEWOOD FOREST**  
3/4 YARD



**CX8019 GARLAND  
PIXIE PAISLEY**  
3/8 YARD



**CX8019 HOLLYBERRY  
PIXIE PAISLEY**  
1/4 YARD



**CX2490 RED  
DUMB DOT**  
1/2 YARD



**CX8019 EVERGREEN  
PIXIE PAISLEY**  
1-1/2 YARDS (BINDING)



**(BACKING) YOUR CHOICE**  
2-1/2 YARDS

## FABRIC REQUIREMENTS

SKU	YARDAGE PER ONE QUILT	# OF BOLTS FOR 12 KITS	# OF BOLTS FOR 24 KITS
(A) CM8016 HOLLYBERRY	1/2 YARD	1 BOLT (6 YARDS)	1 BOLT (12 YARDS)
(B) CM8016 WINTER	1/2 YARD	1 BOLT (6 YARDS)	1 BOLT (12 YARDS)
(C) CM8018 HOLLYBERRY	1/2 YARD	1 BOLT (6 YARDS)	1 BOLT (12 YARDS)
(D) CM8020 HOLLYBERRY	3/4 YARD	1 BOLT (9 YARDS)	2 BOLTS (18 YARDS)
(E) CX8019 GARLAND	3/8 YARD	1 BOLT (4-1/2 YARDS)	1 BOLT (9 YARDS)
(F) CX8019 HOLLYBERRY	1/4 YARD	1 BOLT (3 YARDS)	1 BOLT (6 YARDS)
(G) CX2490 RED	1/2 YARD	1 BOLT (6 YARDS)	1 BOLT (12 YARDS)
(BINDING) CX8019 EVERGREEN	1-1/2 YARDS	1 BOLT (15 YARDS)	2 BOLTS (30 YARDS)
(BACKING) YOUR CHOICE	2-1/2 YARDS	2 BOLTS (30 YARDS)	4 BOLTS (60 YARDS)
<b>TOTAL BOLTS NEEDED</b>		<b>10 BOLTS (8 W/O BACK)</b>	<b>14 BOLTS (10 W/O BACK)</b>

## Around the Tree

by Marsha Evans Moore

Size: 54" diameter

Fabrics	Yardage	Cutting
(A) Hollywood Pixies CM8016 Winter-D	5/8 yard	Cut 8 large squares centered over pixies.
(B) Pixie Ornaments CM8018 Holly-D	3/8 yard	Cut 8 - 6" x 6" squares. Sub-cut each square in half diagonally twice to make 32 triangles.
(C) Pixie Paisley (Green) CM8019 Ever-D	1 yard	Cut 3 diamonds. Cut 2 half diamonds with fabric folded in half. Cut 4 WOF x 1" strips. Sub-cut 16 frame pieces using the template. Cut 6 WOF x 2 1/2" binding strips. Cut 1- 1 3/4" x 14" bias strip.
(D) Pixie Paisley (Coral) CM8019 Garland-D	3/8 yard	Cut 4 WOF x 1" strips. Sub-cut 16 frame pieces using the template. Cut 2 WOF x 1 5/8" strips. Sub-cut into 32-1 5/8" x 1 5/8" small squares.
(E) Pixiewood Forrest CM8020 Holly-D		Cut 4 diamonds.
(F) Dumb Dots CX2490 Redx-D	1/2 yard	Cut 8 WOF x 1 5/8" strips. Sub-cut into 32-8 3/8" x 1 5/8" rectangles.

### Additional Requirements:

2 yards Backing fabric, 60" x 60" piece batting, thread to match fabrics, template plastic, rotary cutter, ruler and mat, sewing machine, iron and basic sewing supplies.

## Cutting

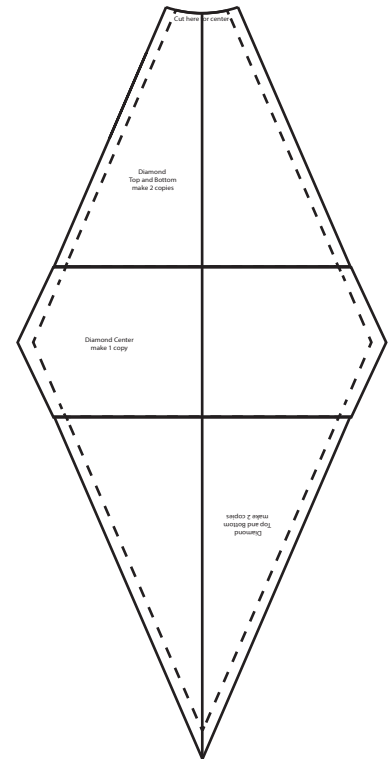
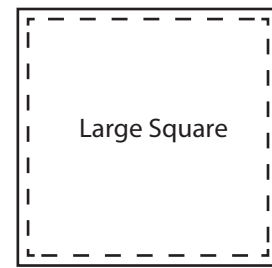
1. Make plastic templates for the Large Square 6 3/8" x 6 3/8" which includes seam allowance. Make a template for the Frame.

2. Place the Large square on the fabric centering it over the motifs on the Hollywood Pixie fabric. Trace around the template and cut out.

3. Trace the Frame pieces on the WOF strips. Cut out the pieces.

4. Make 2 copies of the Diamond Top and Bottom and one copy of the Diamond center. Cut out the patterns. Overlap the Center over the shaded edges of the Top and Bottom so the lines match. Glue or tape the pieces together.

5. Cut the pieces listed on the fabric chart.

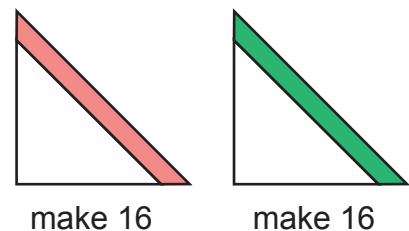


## Directions

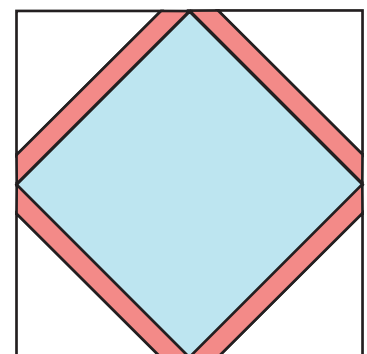
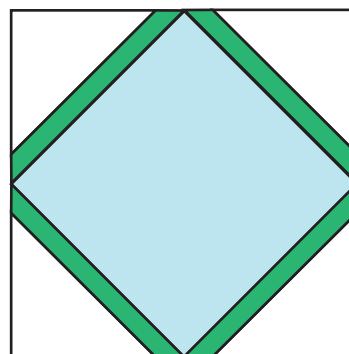
Stitch all seams right sides together using 1/4" seam allowance.

## Making the Pixie Blocks

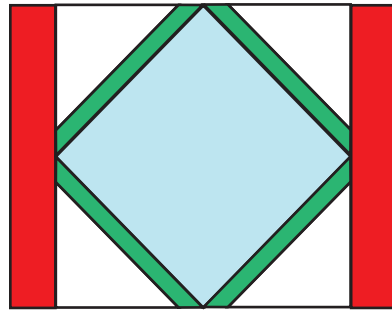
1. Sew the shorter edge of the frame to a triangle.



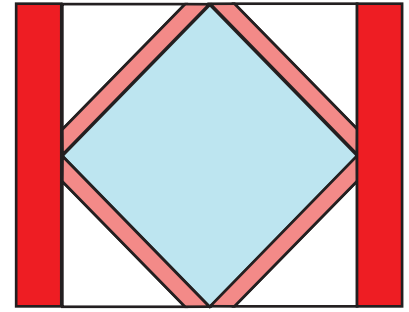
2. Sew the longer edge of the frame to each side of the large squares.



3. Sew the rectangles to the sides of the block.



make 4



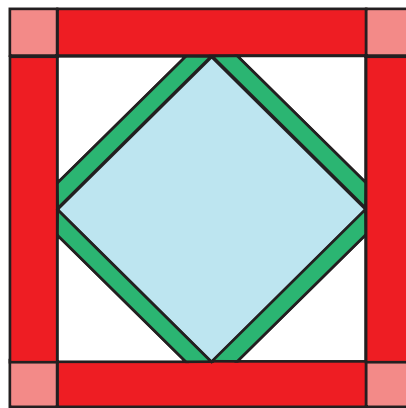
make 4

4. Sew a small square to each end of the remaining rectangles.

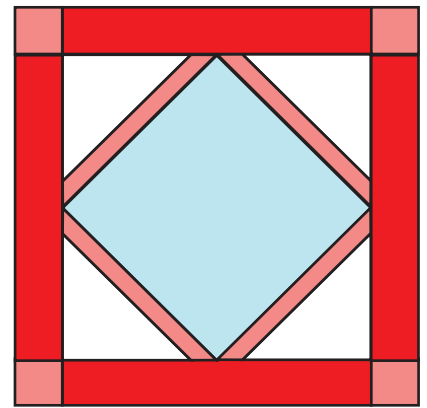


make 16

5. Sew the rectangle/square units to the top and the bottom of the block.



make 4

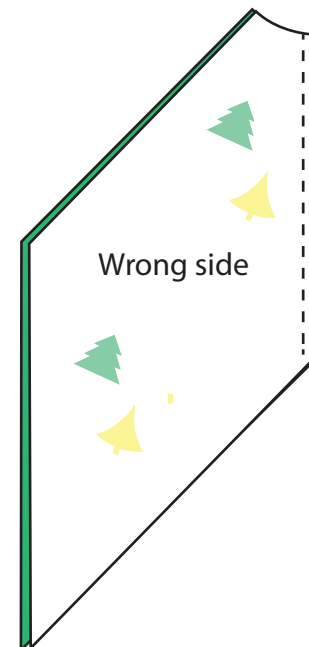
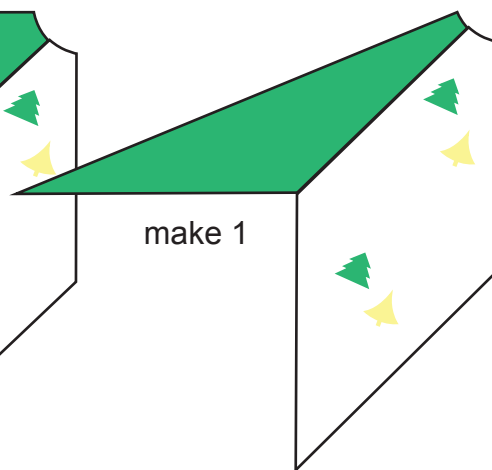
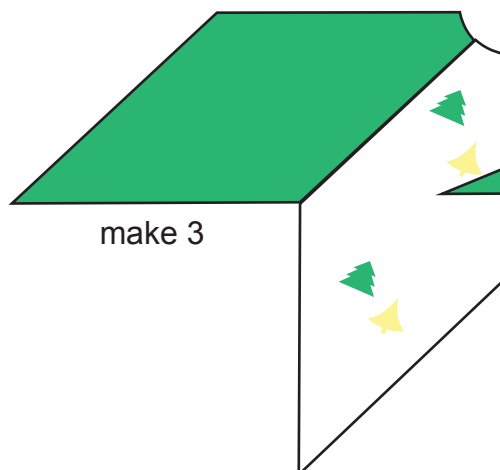


make 4

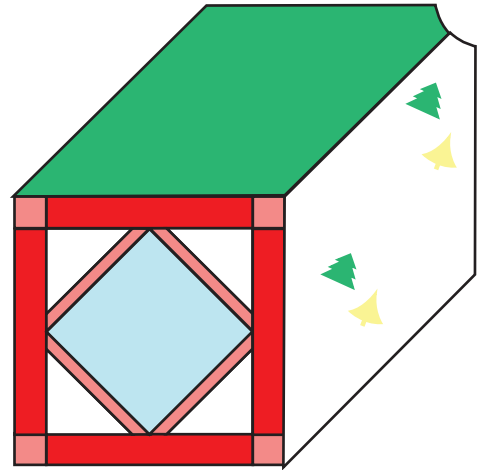
### Making the Tree Skirt

1. Arrange the diamonds and half diamonds alternating the fabrics. Place a Pixie Block between the outer points.

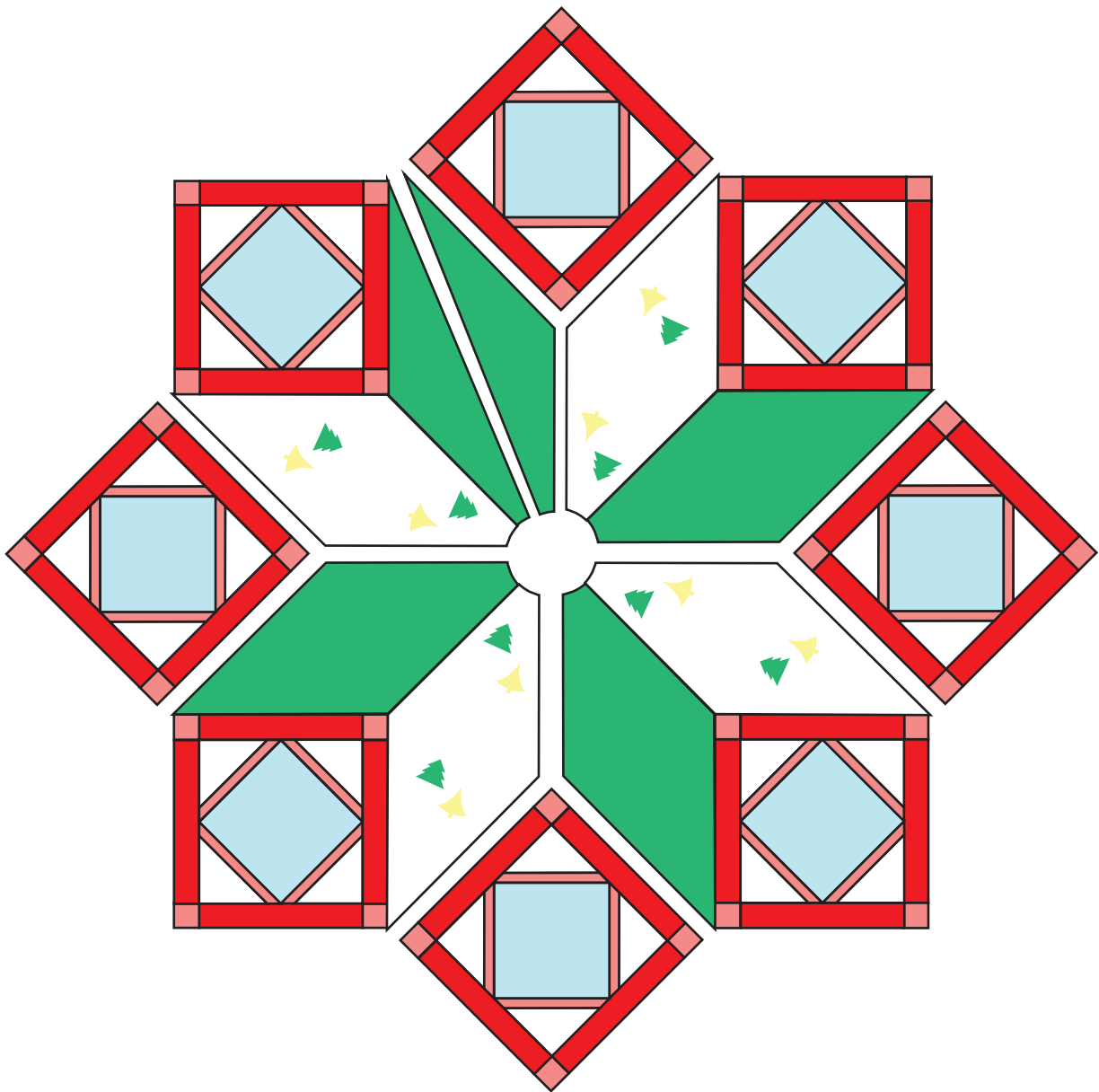
2. Sew one half diamond and the diamonds together in pairs beginning at the curved edge and ending  $\frac{1}{4}$ " from the edge of the side point.



3. Sew a block between the points of the diamonds beginning the stitching at the side point of the seamline.



4. Sew the pairs of diamonds together. Then join the remaining half diamond to the treeskirt. Sew the blocks between the points of the diamonds.



## **Finishing**

1. Cut a WOF by 60" length of backing fabric. Cut two 24" x 7" pieces. Sew to the side edges matching the centers.
2. Layer and quilt the tree skirt as desired.
3. Stitch one long edge of the bias strip to the inner curve of the tree skirt using a 3/8" seam allowance.
4. Fold the bias strip to the wrong side turning under the edge and sew in place.
5. Sew the ends of the binding strips together. Fold the binding in half lengthwise and press. Bind the edges of the quilt mitering at the corners of the blocks.