

BUILDING BLOCKS quilt



Building Blocks Quilt

Fabric Requirements

Finished Quilt Size: 54" x 64"

Skill Level: Beginner / Intermediate



DC7541 Royal
MAGGIE JEAN 1/4 yard



DC7543 Royal
FROLICKING 1/4 yard



DC7544 Blue
ON THE WIND 1/4 yard



DC7541 Sky
MAGGIE JEAN 1/4 yard



DC7546 Blue
TRESSE 1/4 yard



DC7543 Apple
FROLICKING 1/4 yard



DC7542 Lime
BIG LOVE 1/4 yard



DC7546 Lime
TRESSE 1/4 yard



DC7548 Spring
MINI BARGELLO 1/3 yard



DC7543 Orange
FROLICKING 1/4 yard



DC7542 Tangerine
BIG LOVE 1/4 yard



DC7546 Citrus
TRESSE 1/4 yard



DC7543 Raspberry
FROLICKING 1/4 yard



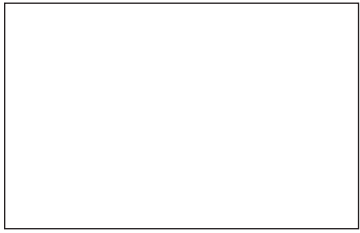
DC7544 Raspberry
ON THE WIND 1/4 yard



DC7542 Candy
BIG LOVE 1/4 yard



DC7546 Raspberry
TRESSE 1/4 yard



SC5333 Bright White
COTTON COUTURE 3 yards



DC7548 Spring
MINI BARGELLO



DC7546 Citrus
TRESSE

BINDING: 1/2 yard

BACKING: 3 1/2 yards

Also Needed:

- 60" x 70" quilt batting.

- 1 1/3 yards ultra-light-weight iron-on interfacing, a rotary cutter, a long acrylic ruler with 45° markings, a 60° triangle acrylic ruler, cutting mat, thread, scissors, small pointed scissors, pins, erasable fabric marker.

Building Blocks Quilt

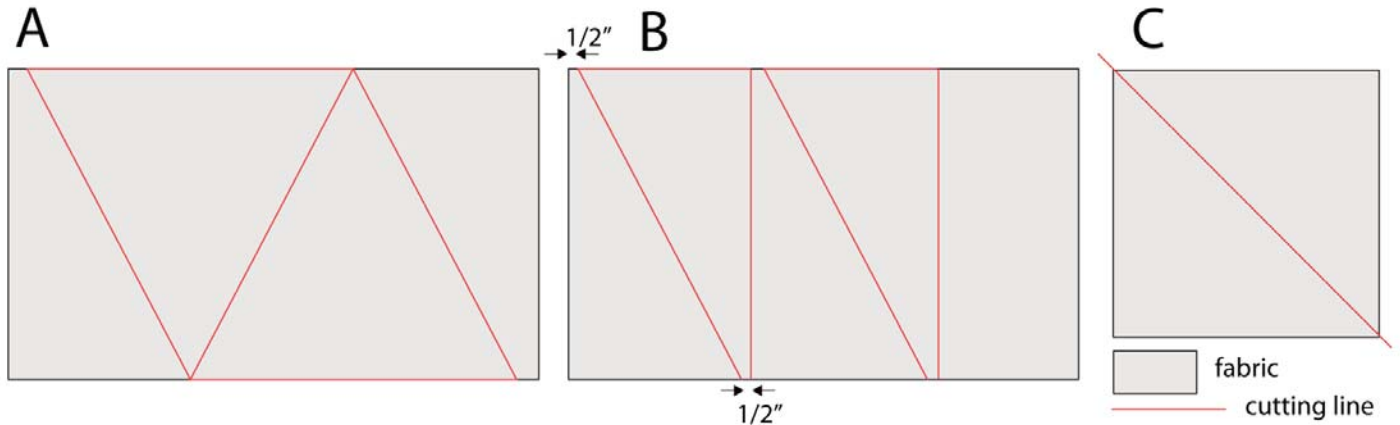
Cutting Instructions:

- DC7541 MAGGIE JEAN - Royal - Cut 1 strip 4" x Width of Fabric (WOF). Subcut strip into 14 equilateral triangles using the 60° triangle acrylic ruler as per **Diagram A**.
- DC7543 FROLICKING - Royal - Cut 1 strip 4" x WOF. Subcut strip into 12 equilateral triangles using the 60° triangle acrylic ruler as per **Diagram A**.
- DC7544 ON THE WIND - Blue - Cut 1 strip 4" x WOF. Subcut strip into 13 equilateral triangles using the 60° triangle acrylic ruler as per **Diagram A**.
- DC7541 MAGGIE JEAN - Sky - Cut 1 strip 4" x WOF. Subcut strip into 15 equilateral triangles using the 60° triangle acrylic ruler as per **Diagram A**.
- DC7546 TRESSE - Blue - Cut 1 strip 4" x WOF. Subcut strip into 10 equilateral triangles using the 60° triangle acrylic ruler as per **Diagram A**.
- DC7543 FROLICKING - Apple - Cut 1 strip 4 1/2" x WOF. Subcut strip into 8 (4 1/2" squares).
- DC7542 BIG LOVE - Lime - Cut 1 strip 4 1/2" x WOF. Subcut strip into 10 (4 1/2" squares).
- DC7546 TRESSE - Lime - Cut 1 strip 4 1/2" x WOF. Subcut strip into 8 (4 1/2" squares).
- DC7543 FROLICKING - Orange - Cut 2 strips 3" x WOF. Subcut strips into 18 (3" squares).
- DC7542 BIG LOVE - Tangerine - Cut 2 strips 3" x WOF. Subcut strips into 19 (3" squares).
- DC7546 TRESSE - Citrus - Cut 2 strips 3" x WOF. Subcut strips into 17 (3" squares).
- DC7543 FROLICKING - Rasp - Trace 20 petals onto the back of fabric using **Template 1** leaving a bit of space around each one for seam allowance. Cut roughly 1/4" beyond marked lines.
- DC7544 ON THE WIND - Rasp - Trace 20 petals onto the back of fabric using **Template 1** leaving a bit of space around each one for seam allowance. Cut roughly 1/4" beyond marked lines.
- DC7542 BIG LOVE - Candy - Trace 20 petals onto the back of fabric using **Template 1** leaving a bit of space around each one for seam allowance. Cut roughly 1/4" beyond marked lines.
- DC7546 TRESSE - Rasp - Trace 18 petals onto the back of fabric using **Template 1** leaving a bit of space around each one for seam allowance. Cut roughly 1/4" beyond marked lines.
- DC7548 MINI BARG - Spring - Trace 25 circles onto the back of fabric using **Template 2** leaving a bit of space around each one for seam allowance. Cut roughly 1/4" beyond marked lines.
- SC5333 CC - Bright White
 - Cut 7 strips 4" x WOF. Using 60° ruler, subcut strips into 128 pieces as per **Diagram B**.
 - Cut 3 strips 4 1/2" x WOF. Subcut strips into 26 (4 1/2" squares).
 - Cut 8 strips 3" x WOF. Subcut strips into 108 (3" squares). Subcut squares into 216 right-angled triangles as per **Diagram C**.
 - Cut 10 strips 4" x WOF. Subcut strips into 103 (4" squares).
- Interfacing
 - Trace 78 petals onto interfacing using **Template 1** leaving a bit of space around each one for seam allowance. Cut roughly 1/4" beyond marked lines.
 - Trace 25 circles onto the back of fabric using **Template 2** leaving a bit of space around each one for seam allowance. Cut roughly 1/4" beyond marked lines.

Building Blocks Quilt

Cutting Instructions Cont'd:

- DC7548 MINI BARG - Spring - Cut 6 strips 2 1/4" x WOF. Set aside for binding.
- DC7546 TRESSE - Citrus - Cut 1 pieces 60" x WOF.
- Cut 1 pieces 60" x 28". Set both aside for backing.



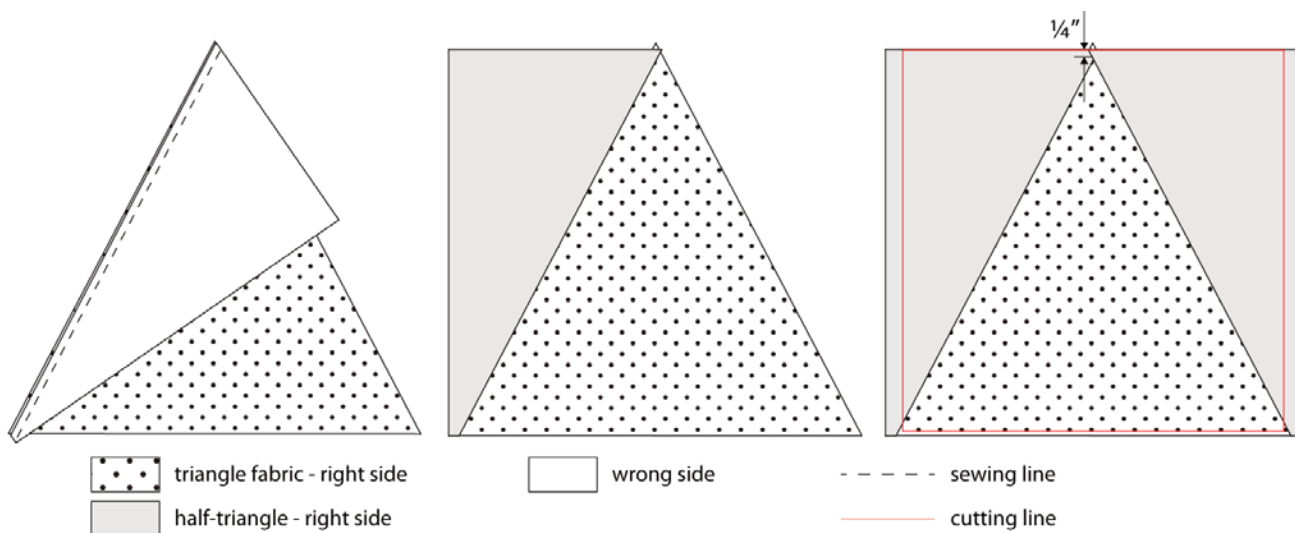
Making Blocks:

** All seam allowances are 1/4".

Equilateral Triangle Blocks:

(Use blue equilateral triangles & white 4" half-equilateral triangles)

- Place a white half-triangle on top of a patterned triangle, Right Sides Together (RST), so that the longest edge runs along the left edge of the patterned triangle & the half-triangle's tip is at the bottom. Match top triangle points. Sew along left edge. Press seams toward half-triangle.
- Place another half-triangle on top of this, RST, so that longest edge runs along the right edge of the equilateral triangle & the half-triangle's tip is at the bottom. Sew along right edge. Press seams toward the half-triangle.
- Square up blocks to 4" centering triangle & leaving 1/4" seam allowance beyond top triangle point.
- Repeat with all equilateral triangles.

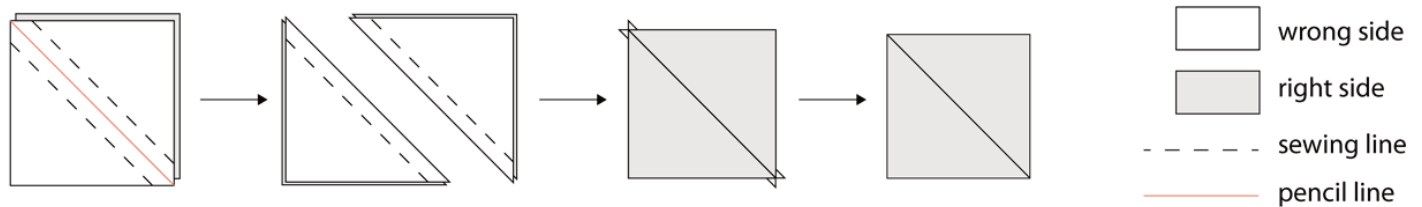


Building Blocks Quilt

Half Square Triangle Blocks:

(Use green & white 4 1/2" squares)

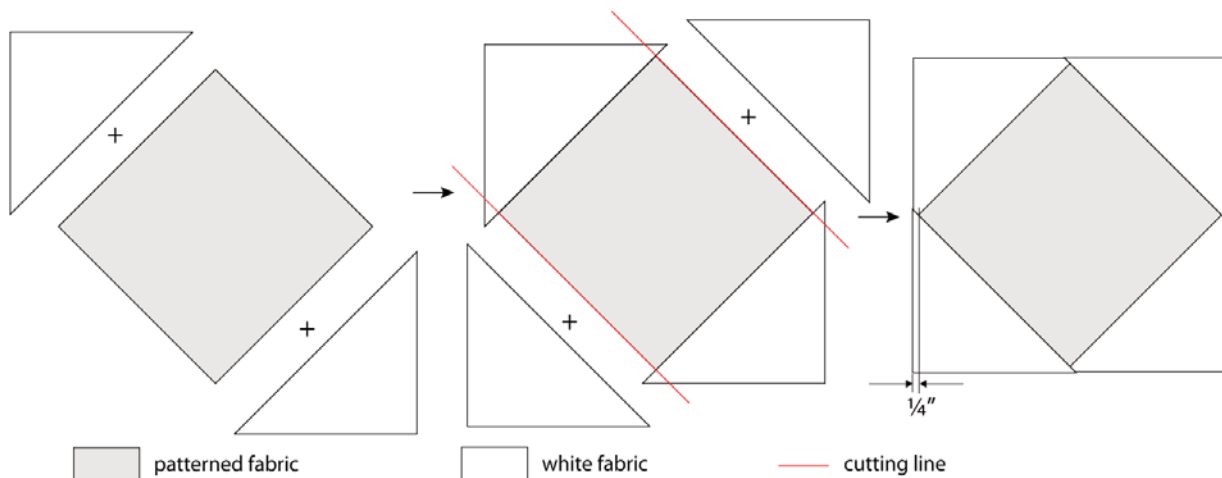
- Place a white 4 1/2" square on a patterned 4 1/2" square, RST, and draw a diagonal line from one corner to another. Use this line as a guide to sew a 1/4" seam down one side of the line. Turn your square around and repeat down the other side of the line. Cut directly along the drawn line, resulting in two new squares when opened. Press the seams open.
- Place one corner of your acrylic ruler on top of the sewn square, lining up the **seam line** (not the fabric edges) with the 45° diagonal ruler guides and making sure you have at least 4" square of fabric under the ruler. Trim the 2 exposed edges with your rotary cutter, spin the fabric around to the opposite corner and repeat, leaving a perfect 4" square of fabric.
- Repeat with remaining squares.



Square On Point Blocks:

(Use orange squares & white 3" right-angled triangles)

- Place a white right-angled triangle on a patterned 3" square, RST, aligning the long edge of the triangle with a side of the square. Sew together. Press the seams open. Repeat along opposite edge of square. Trim corners of triangles that protrude.
- Repeat with the 2 other sides of the square. Square up block to 4", making sure to leave 1/4" beyond the sewn patterned square corners on all sides.
- Repeat with remaining squares.



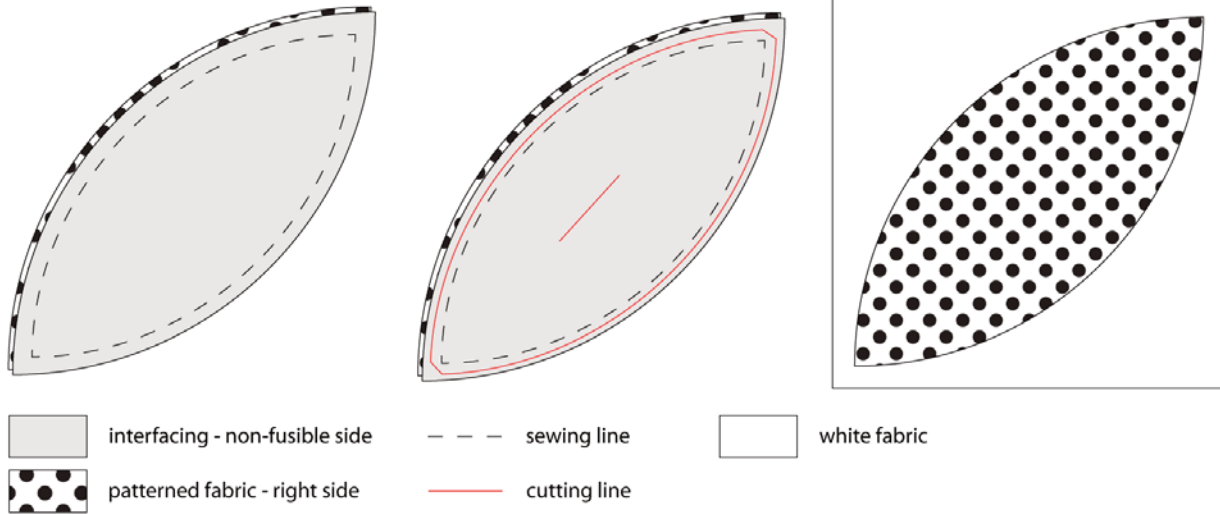
Petal Blocks:

(Use pink petals, interfacing petals & 78 white 4" squares)

- Place an interfacing petal on a patterned petal, fusible side of interfacing to right side of fabric. Sew together along traced lines on wrong side of fabric. Trim seam allowance to 1/8" & clip corners to just beyond stitching.
- Using small pointed scissors, carefully cut a 1" slit (approximately) in the centre of ONLY the interfacing. Turn petal right side out (RSO), pushing out points & easing edges to form smooth curves.
- Centre petal on white 4" square, making sure points of petal are aligned with and equidistant from corners. Fuse in place with a dry iron according to interfacing instructions. Top stitch just inside petal edge all the way around.
- Repeat with remaining petals.

Building Blocks Quilt

Petal Blocks Cont'd:



Circle Blocks:

(Use multi-colored circles, interfacing circles & 25 white 4" squares)

- Place an interfacing circle on a patterned circle, fusible side of interfacing to right side of fabric. Sew together along traced curve on wrong side of fabric. Trim seam allowance to 1/8".
- Using small pointed scissors, carefully cut a 1" slit (approximately) in the centre of ONLY the interfacing. Turn circle right side out (RSO), gently easing edge to form smooth curves.
- Centre circle on white 4" square. Fuse in place with a dry iron according to interfacing instructions. Top stitch just inside circle edge all the way around.
- Repeat with remaining circles.

Piecing Quilt Top:

- Using the Quilt photo as a reference, lay out finished blocks to form quilt top, 15 blocks across by 18 blocks down.
- Sew blocks together, one row at a time. Press seams open.
- Pin rows together, matching seams. Sew rows together. Press seams open.

Assembling Quilt:

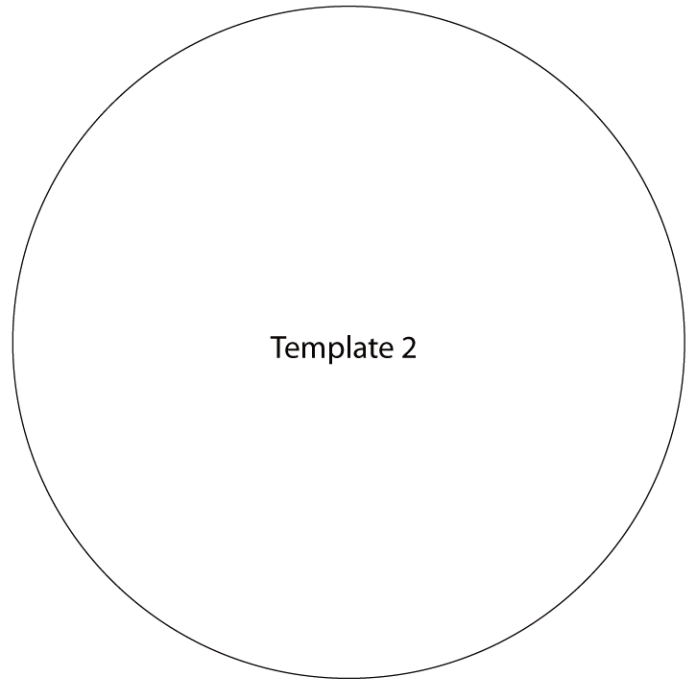
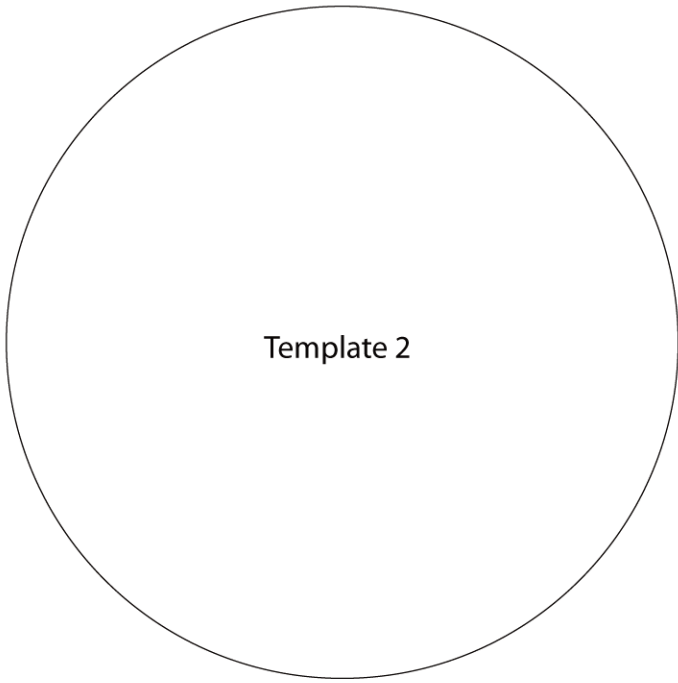
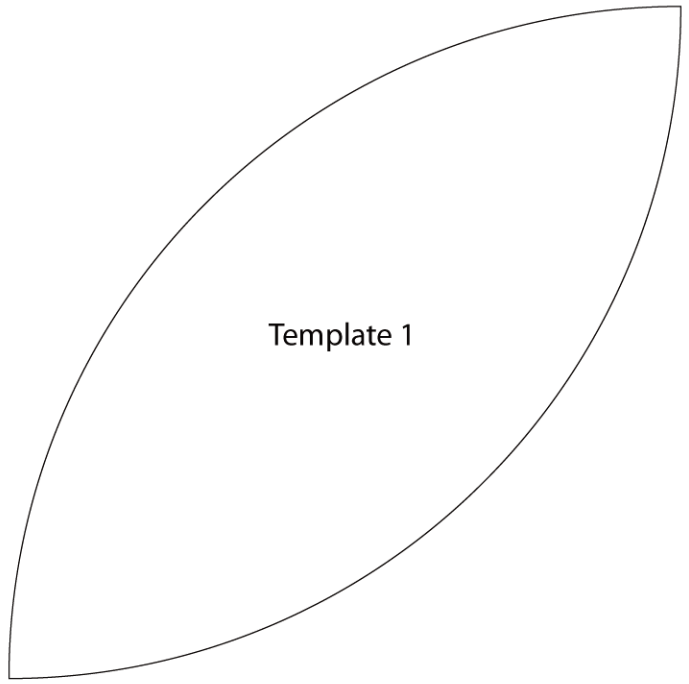
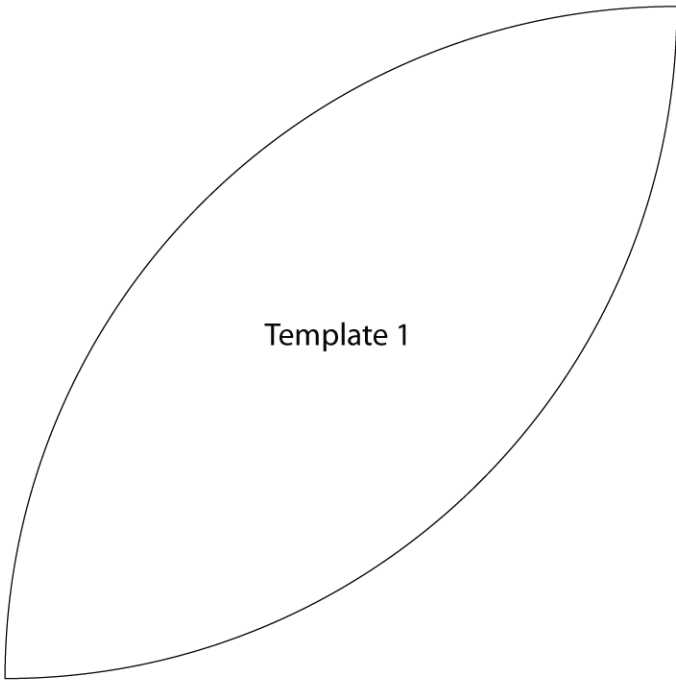
Sew together backing pieces along long edges. Press seam open.

Layer backing, batting and quilt top. Baste or pin.

Quilt as desired.

Square up quilt.

Join binding strips together and bind in your preferred fashion.



Before tracing templates onto fabric, make sure the test block at the right measures 2" square.

If it doesn't, make sure your print settings are such that the file size is not being reduced or scaled in any way.

