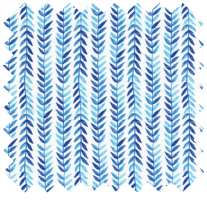


PAPER DOLL  
**LULU**

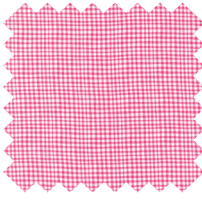
DESIGNED BY  
MICHAEL MILLER FABRICS



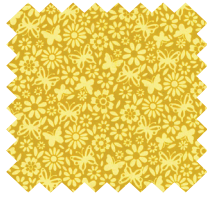
# FABRICS USED ON LULU



DC7546 BLUE  
TRESSE



CX7161 PINK  
GINGHAM PLAY



CX7366 SUNNY  
LITTLE DEE DA



DC7543 APPLE  
FROLICKING



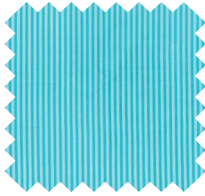
DC7543 RASPBERRY  
FROLICKING



DC7543 ROYAL  
FROLICKING



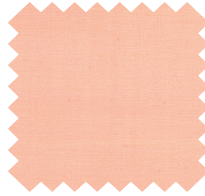
DC7541 ROYAL  
MAGGIE JEAN



CX6574 TURQUOISE  
LITTLE STRIPE



SC5333 MANGO  
COTTON COUTURE



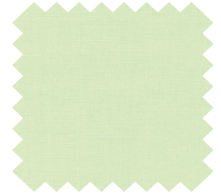
SC5333 CREAMSICLE  
COTTON COUTURE



SC5333 CRANBERRY  
COTTON COUTURE



SC5333 BLACK  
COTTON COUTURE



SC5333 SPRING  
COTTON COUTURE

## OTHER DESIGNS AVAILABLE



# FREE PATTERN COMING SOON!

[www.michaelmillerfabrics.com/inspiration/paperdollpatterns](http://www.michaelmillerfabrics.com/inspiration/paperdollpatterns)

# LET'S PLAY DRESS UP Pattern

Size: 44"W x 63"H | Designed by: Kaitlin Witte | Level: Advanced Beginner



IRIS



STELLA



HENRY



LULU

## "Let's Play Dress Up"

Quilt by Kaitlin Witte

Size: Approximately 44" x 63" Skill Level: Advanced Beginner

### Materials

#### Cutting instructions

**Please Note: All strips are cut across the width of fabric (WOF) from selvage to selvage edge unless otherwise noted.**

	Fabric	Yardage	Cutting
(A)	Background	1 $\frac{3}{8}$ yards	• Cut one 28 $\frac{1}{2}$ " x 47 $\frac{1}{2}$ " strip
(B)	Inner Border	$\frac{2}{3}$ yard	• Cut three 4" x WOF strips. Sew the strips together end to end with a diagonal seam. Cut two 4" x 47 $\frac{1}{2}$ " strips. • Cut two 4" x 35 $\frac{1}{2}$ " WOF strips.
(C)	Outer Border	1 yard	• Cut three 5" x WOF strips. Sew the strips together end to end with a diagonal seam. Cut two 5" x 54 $\frac{1}{2}$ " strips. • Cut three 5" x WOF strips. Sew the strips together end to end with a diagonal seam. Cut two 5" x 44 $\frac{1}{2}$ " strips.
(D)	Binding	$\frac{1}{2}$ yard	• Cut six 2 $\frac{1}{2}$ " x WOF strips for the binding.
(E)	Doll	1 $\frac{1}{4}$ yards	• See instructions to cut one paper doll.
(F)	Undergarments	1 Fat Quarter	• See instructions to cut one undergarment.
(G)	Hair and Eyebrows	1 Fat Quarter	• See instructions to cut the Hair and eyebrows.
(H)	Eyes	6" square	• See instructions to cut two eyes.
(I)	Clothes	Fat Quarter for each piece of clothing chosen	• See instructions to cut the clothes.
(J)	Outfit Accents	Fat Eighth for each accessory chosen	• See instructions to cut the outfit accents.
(K)	Lining Fabric	1 yard	• See instructions to cut the lining pieces for each pieces of clothing and accessories.
Backing	Backing	3 yards	• Cut two 52" x WOF strips. Piece the strips together and trim to make the 52" x 71" pieced backing.

#### **You will also need:**

• 52" x 71" batting, sew-on velcro, fusible wens, threads to match, scissors, straight pins, acrylic ruler, rotary cutter and mat.

## Disclaimers

This pattern is provided as a courtesy to quilt stores, catalogs and quilters. Michael Miller Fabrics, LLC is not responsible for the accuracy of any kits packaged to accompany this pattern. Please direct any inquiries to the kit maker.

Yardage requirements for this pattern may allow for excess yardage to accommodate specific placement of motifs or to allow for any fussy-cutting to achieve the finished quilt design.

While every attempt has been made to give accurate measurements, yardage requirements and construction directions; this does not allow personal variations in measuring, cutting or sewing. The enclosed directions were used in the construction of the original quilt.

## Center Block Assembly

1. Select a doll, hair, eyebrows undergarment, hair accessories and shoes you would like to use for your quilt. Following the manufacturer's instructions Trace the shapes onto the paper side of the fusible web. Roughly cut out each shape.
2. Press the fusible shape to the appropriate fabric for each piece. Cut out the shapes on the drawn lines.
3. Fold the 28 ½" x 47 ½" Fabric A rectangle in half both ways and press to mark the centerlines for the height and the width of the background piece.
4. Using the centerlines as a guide, press the doll, hair, eyebrows undergarment, hair accessories and shoes to the Fabric A rectangle to make the center block.
5. Finish the raw edges of the fused shapes with a decorative stitch such as a blanket or satin stitch.
6. For Removable Clothes: Cut 1"-2" pieces of sew-on velcro. Separate the two halves. Sew the loop (soft) half of the Velcro to the shoulders, waist and any where else you would like to interchange pieces of the doll's outfit.

*Permanent Placement: If you want to have the cloths permanently attached to the center block, skip the steps for attaching velcro throughout the pattern. Instead sew the finished clothes directly to the figure once you have completed the assemble of the clothes following the instructions below.*

## Flat Clothes (no pleats or gathers):

7. Place the fabric selected for the article of clothing, right sides together, with the lining fabric. Trace the selected article of clothing onto the layered fabrics. Cut out the shape through both pieces of fabric. Mark the right side of each piece with a safety pin and separate the two pieces.
8. If you would like to add any accents to the front of the clothing, repeat the fusible applique instructions from the Center Block Assembly section, to trace, cut, fuse and finish the accents onto the front of the clothing.
9. For Removable Clothes-Match up the lining piece of clothing to the Velcro pieces sewn onto the doll to mark the position for the second half of Velcro. Attach the Hook (rough) half of the velcro to the lining piece.
10. Place the clothing front and lining piece, right sides together, and pin in place. Sew around the two pieces using a ¼" seam allowance, leaving an opening for turning.

11. Turn the clothing right side out and press. Topstitch around the outer edge to close the opening and finish the piece of clothing.
12. Repeat for the remaining flat articles of clothing and accessories.

#### Pleated Pants

13. To pleat the pants for the girl, trace the outer dotted line when cutting the pants fabric. For the lining, trace the solid line on the sides for the pants.
14. Match the lower legs of the pants piece with the lining piece. Then match up the upper corners of the pants fabric with the upper corners of the lining piece, you will have excess pants fabric.
15. Gently fold the excess fabrics into two pleats that go down the center of each leg on the pants. Pin and baste the pleats in place on the pants fabric only.
16. Repeat Step 9 to add the Velcro to the lining piece, if desired.
17. Repeat Steps 10-11 to finish the pants.

#### Gathered Skirts

18. If you would like the skirt or dress to be gathered, start with a rectangle or square that matches the widest part of the skirt, it can be between 13" wide for a narrow skirt or 18" wide for a full skirt. Measure the doll to decide the desired length.
19. Cut a rectangle for both the skirt fabric and lining fabric.
20. Repeat Steps 10-11 to create a lined rectangle.
21. Using your favorite method, gather the top edge of the lined fabric to match the waist on the doll.
22. Position the Velcro and the top of the skirt on the lining side. Topstitch the Velcro in place. This will also reinforce the gather stitch along the top edge of the skirt as well as secure the Velcro to the back.

#### Three-Dimensional Bows

23. Cut two 2 ½" x 3 ½" rectangles and two 1 ½" x 2 ½" strip from the bow tie fabric.
24. Place the two 2 ½" x 3 ½" rectangles, right sides together. Stitch around the outer edge, leaving an opening for turning to make the bow section. Turn the bow section right side out and stitch the opening closed.
25. Repeat Step 24 with the two 1 ½" x 2 ½" strips to make the center section.
26. Hold the bow section with the 3 ½" edge at the top and bottom. Pinch the center together and wrap the center second around the pinched area. Pin the two pieces together and arrange the bow tie to your liking. Stitch the center band in place around the Bow section to secure the bow tie shape to complete.
27. Sew the Velcro to the back as desired.

## Quilt Top Assembly

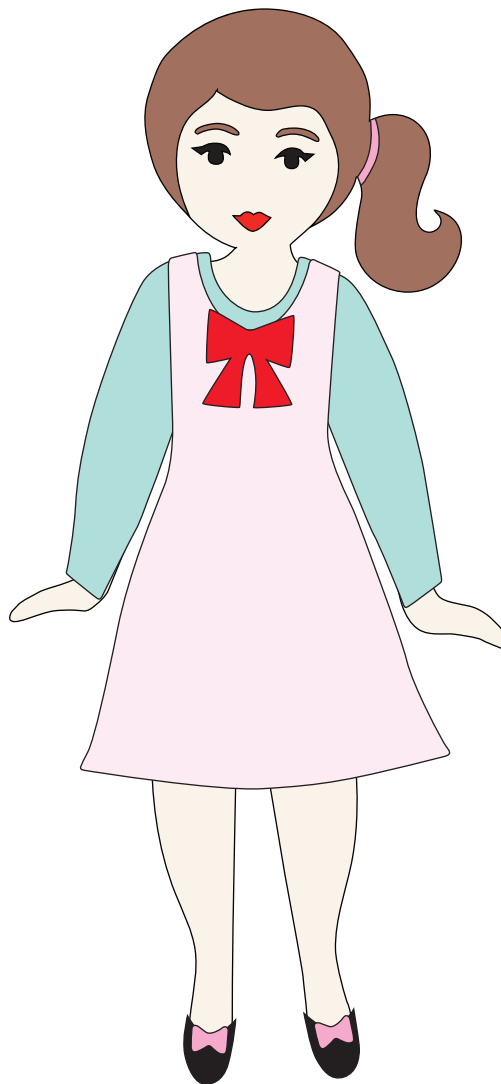
*(Follow the Quilt Layout while assembling the quilt top.)*

28. Sew one 4" x 47 1/2" Fabric B strip to each side of the center block. Sew one 4" x 35 1/2" Fabric B strip to the top and bottom of the center block.
29. Sew one 5" x 54 1/2" Fabric C strip to each side of the center block. Sew one 5" x 44 1/2" Fabric C strip to the top and bottom of the center block to make the quilt top.
30. Layer and quilt as desired.
31. Sew the six 2 1/2" x WOF Fabric D strips together, end-to-end with 45-degree seams, to make the binding. Fold this long strip in half lengthwise with wrong sides together and press
32. Bind as desired.

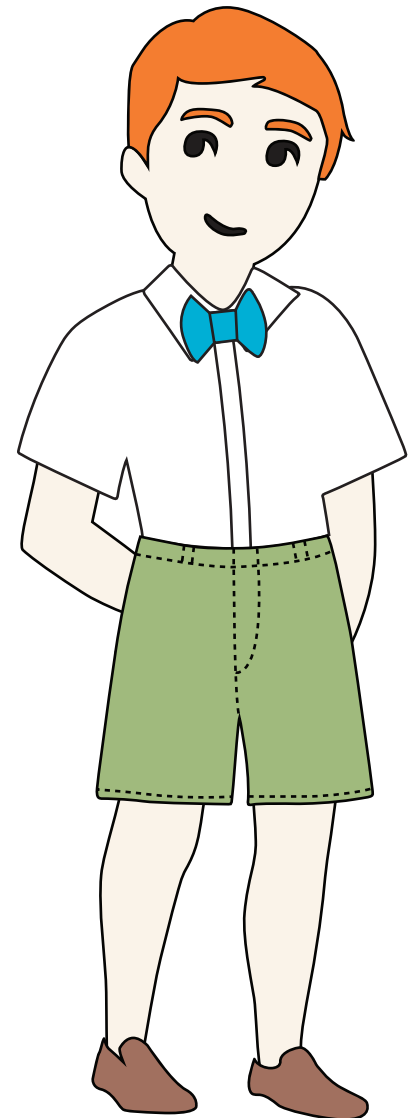
## Suggested Outfits



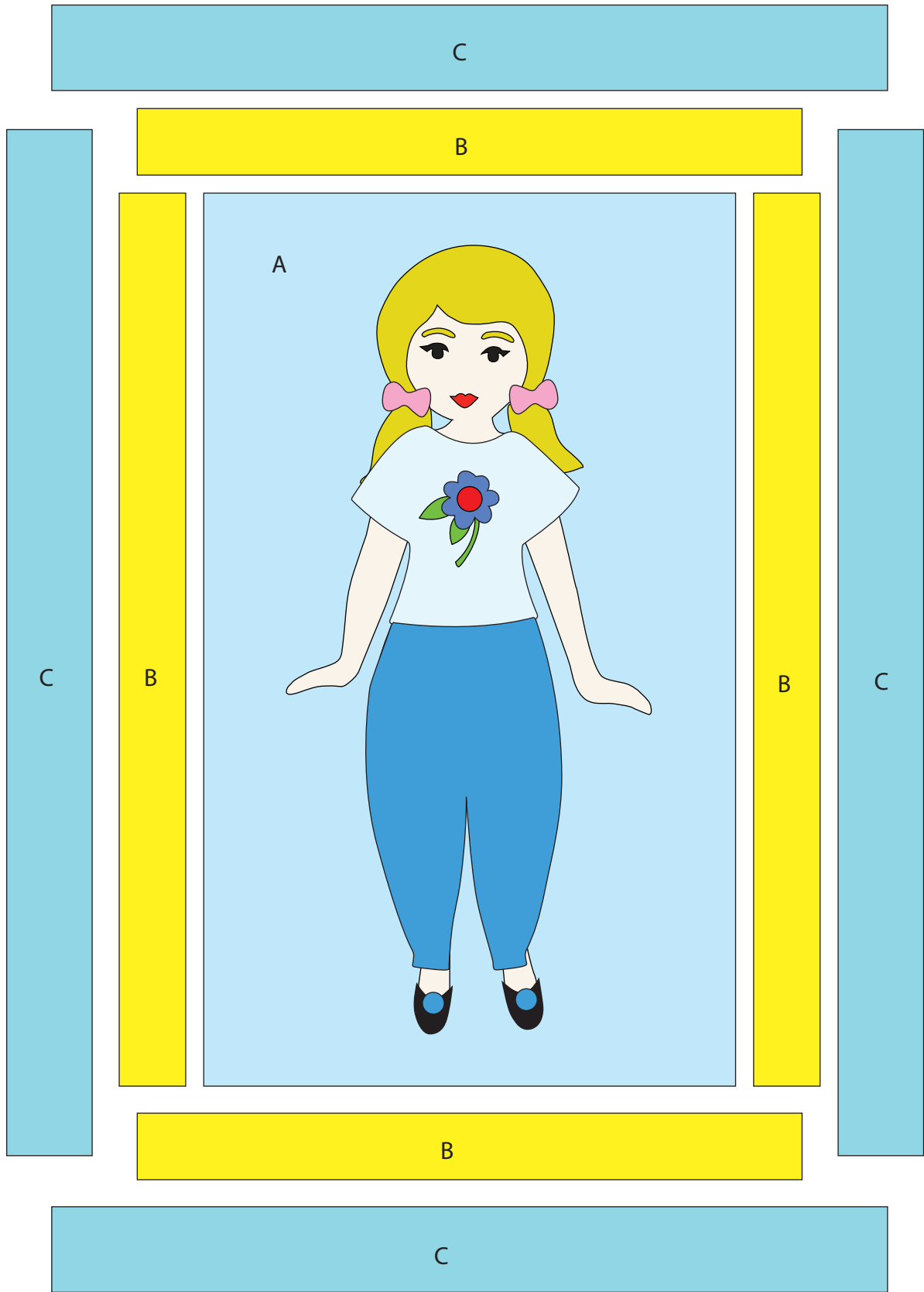
Iris



Stella



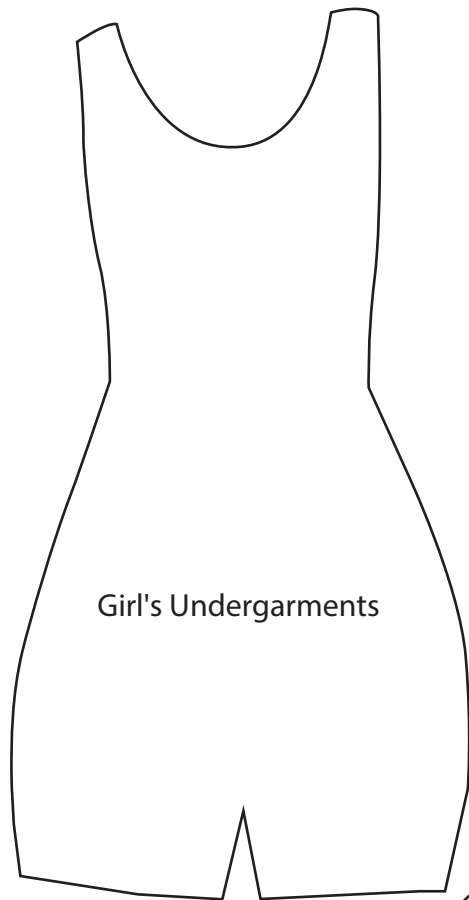
Henry



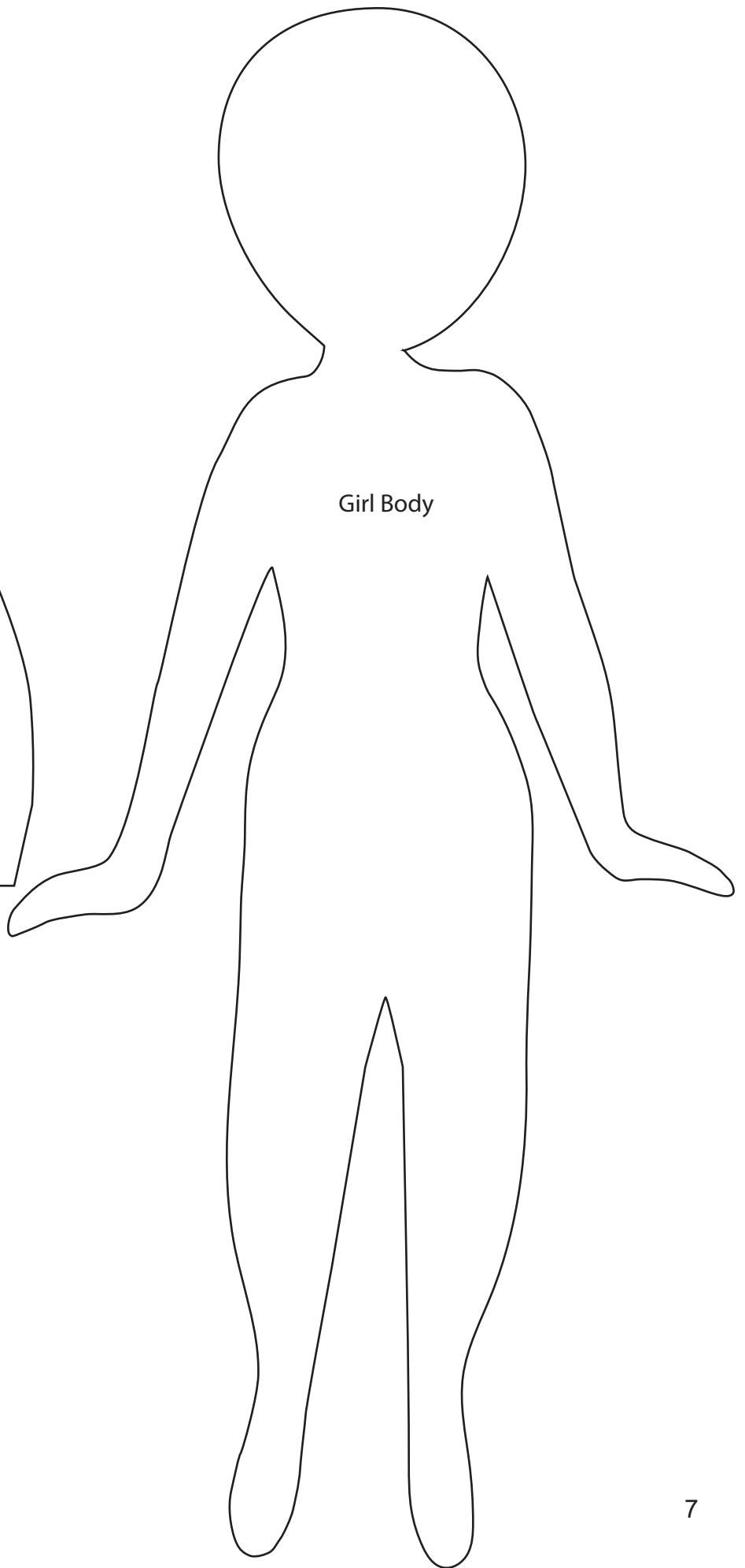
Quilt Layout



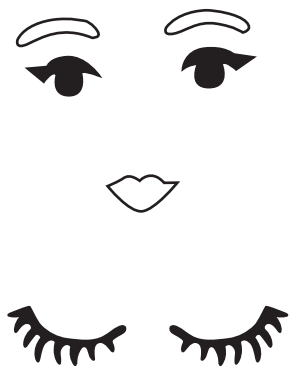
Enlarge Templates 400%  
Reversed for Fusible Applique



Girl's Undergarments



Girl Body



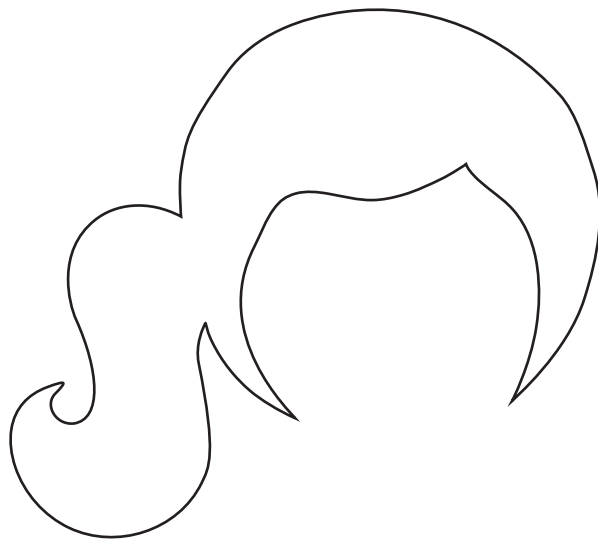
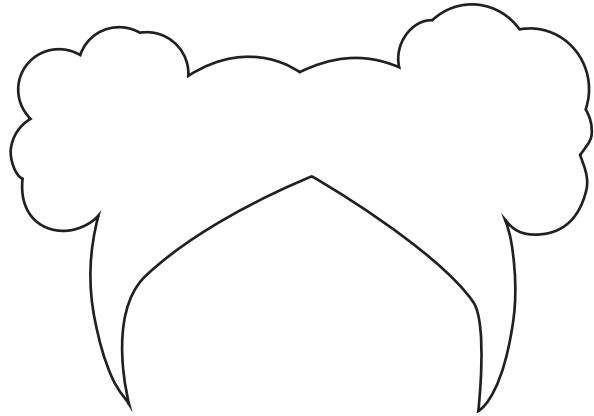
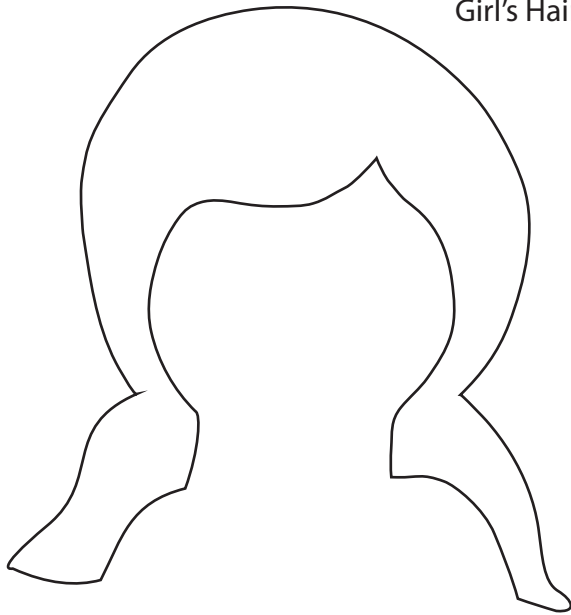
Girl's Face Options



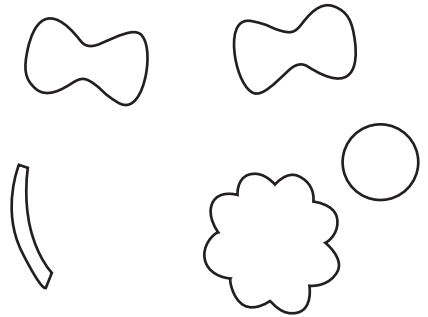
Square should measure  
1" **AFTER** enlarging  
templates 400%

Enlarge Templates 400%  
Reversed for Fusible Applique

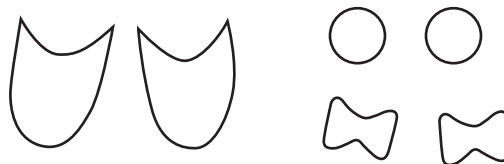
Girl's Hair



Girl's Hair Accessories



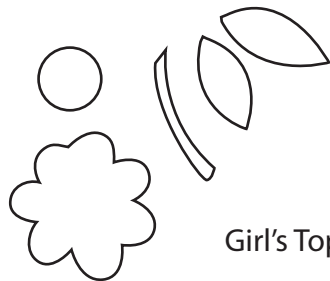
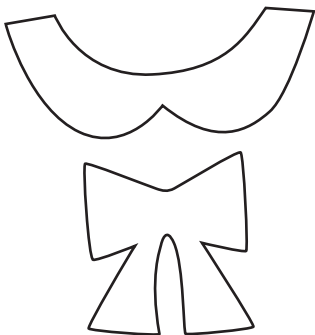
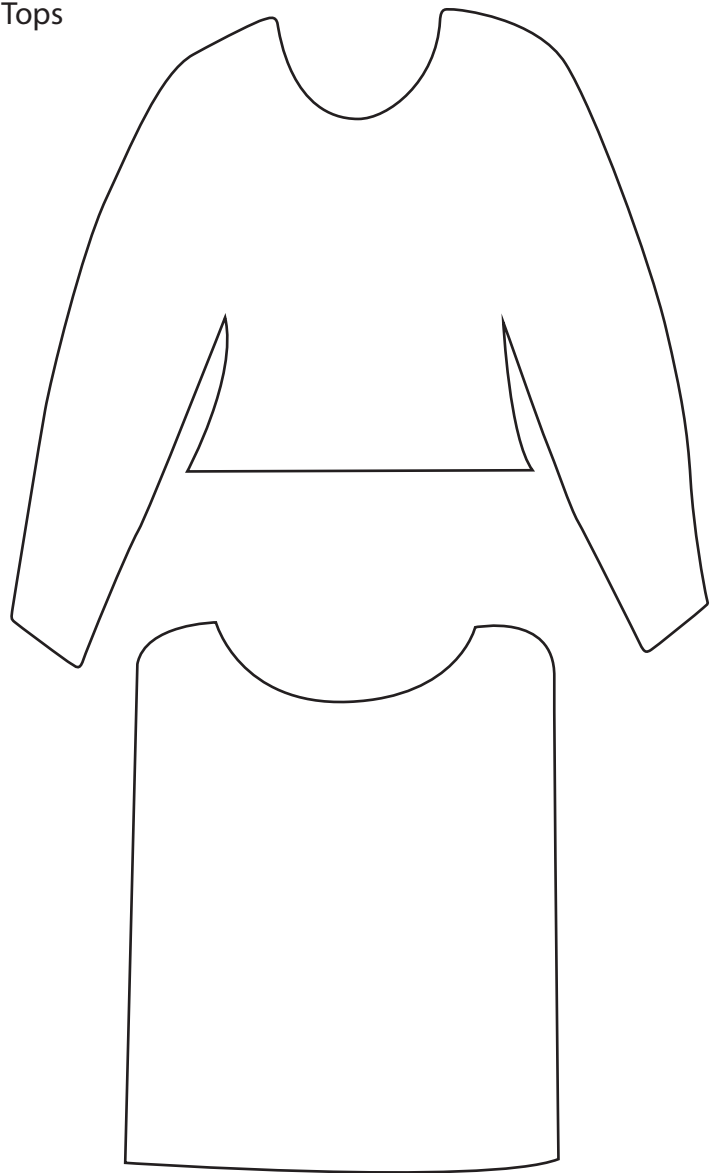
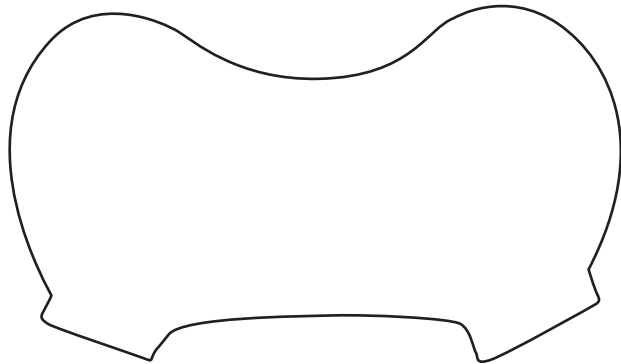
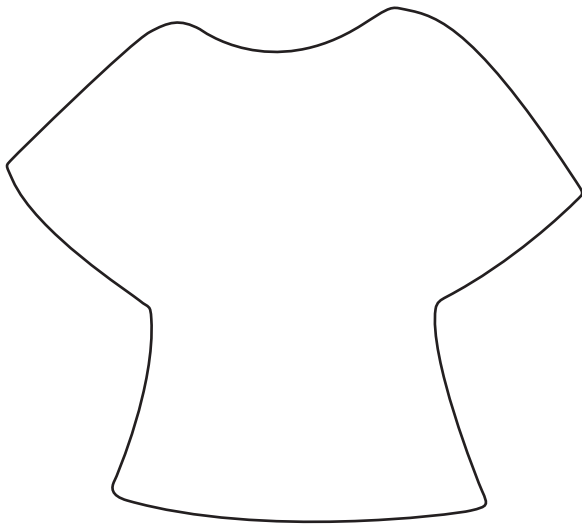
Girl's Shoes and Accessories



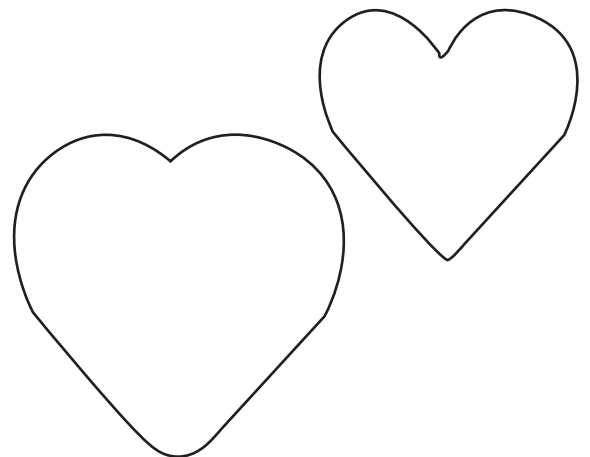
Square should measure  
1" **AFTER** enlarging  
templates 400%

Enlarge Templates 400%  
Reversed for Fusible Applique

Girl's Tops



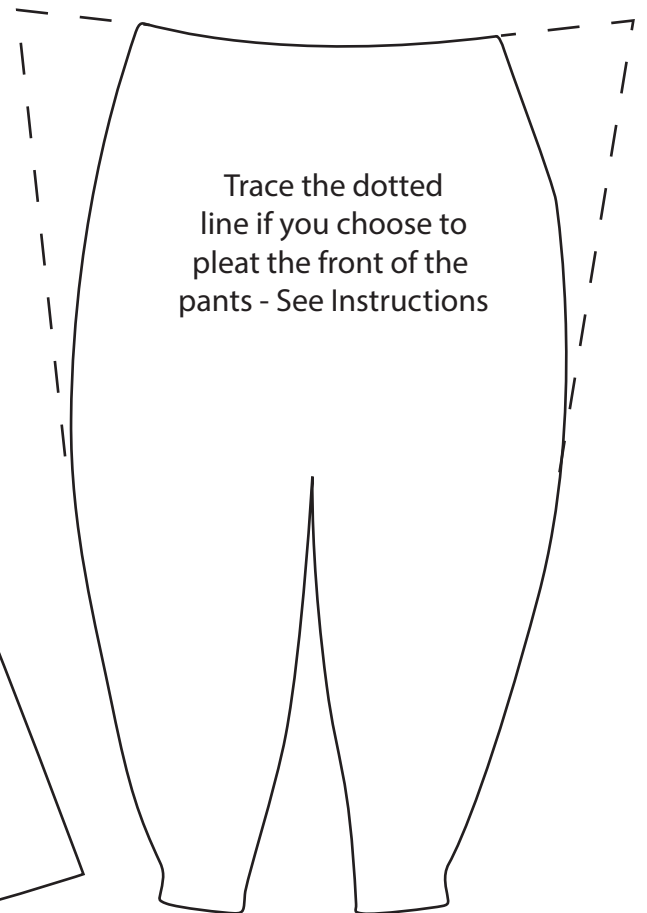
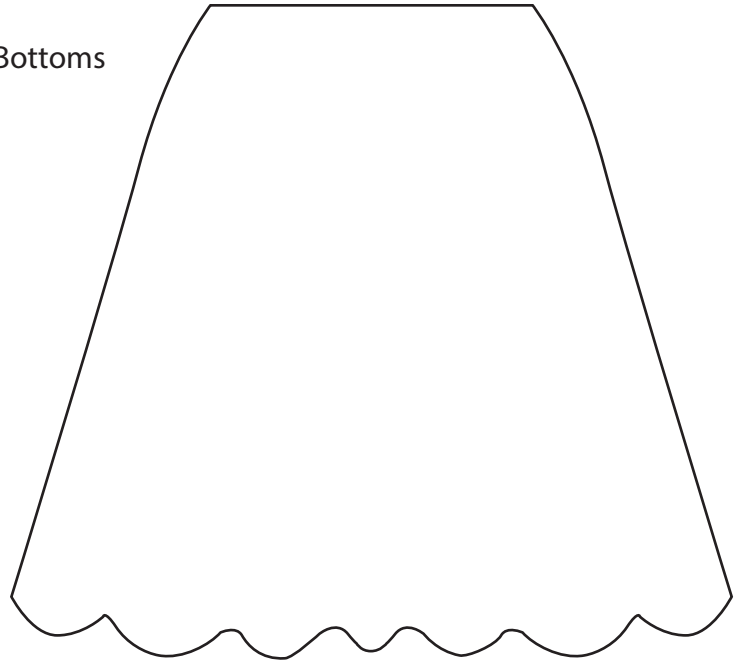
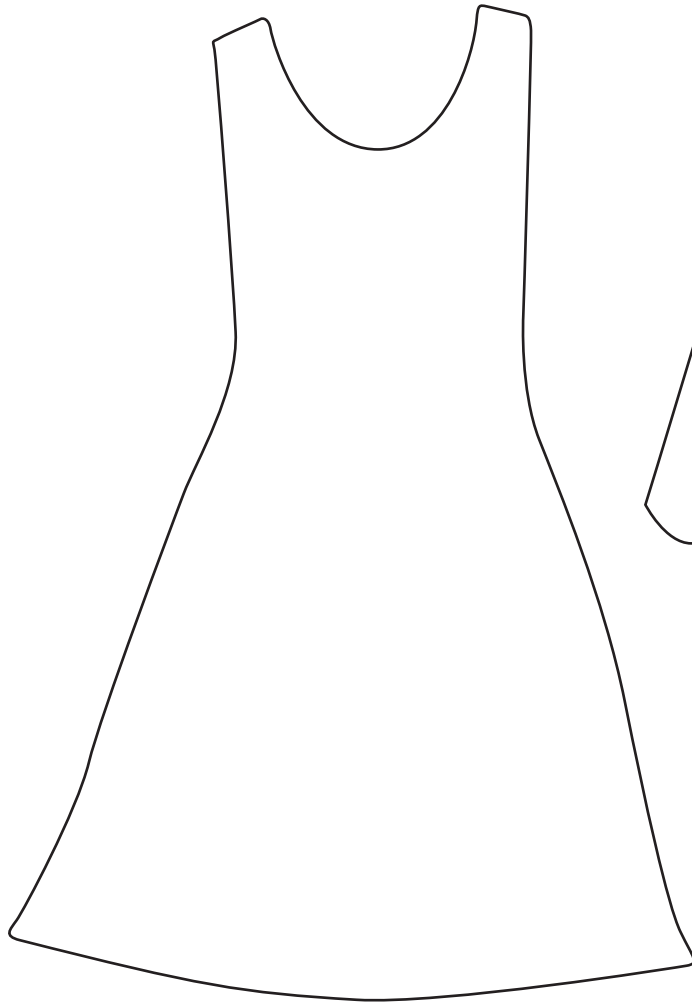
Girl's Top Accents



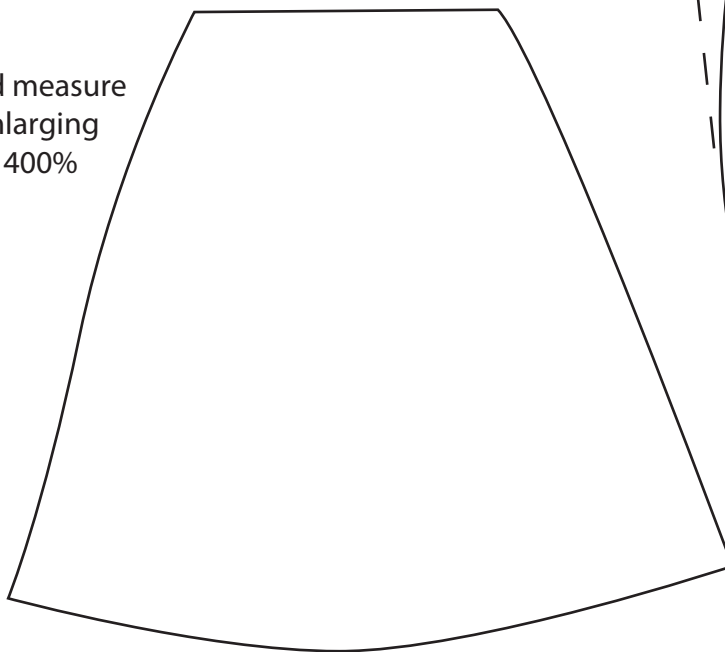
Square should measure  
1" **AFTER** enlarging  
templates 400%

Enlarge Templates 400%  
Reversed for Fusible Applique

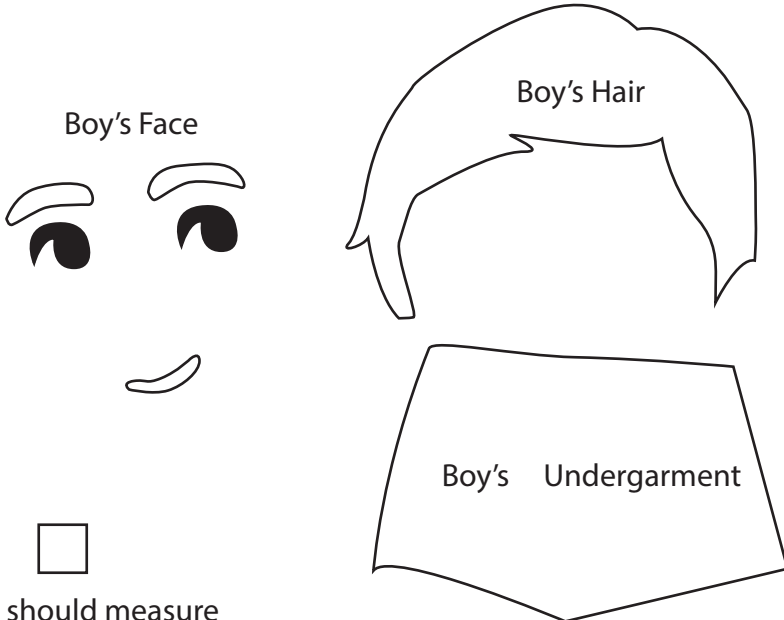
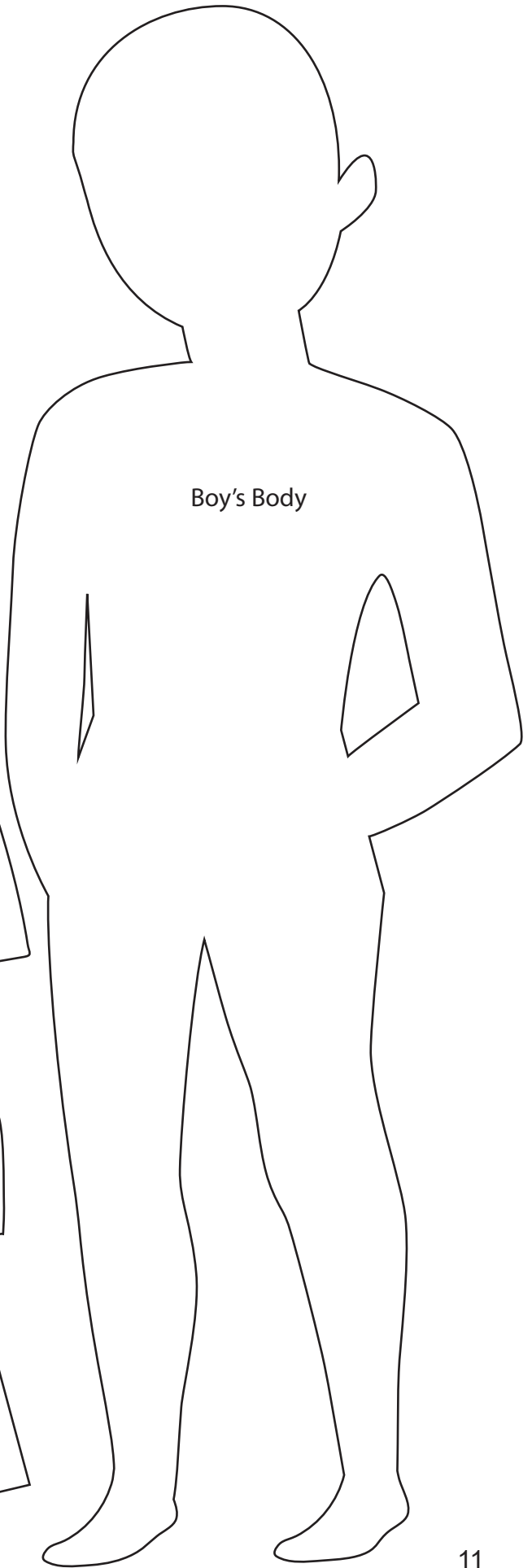
Girl's Dresses and Bottoms



Square should measure  
1" **AFTER** enlarging  
templates 400%

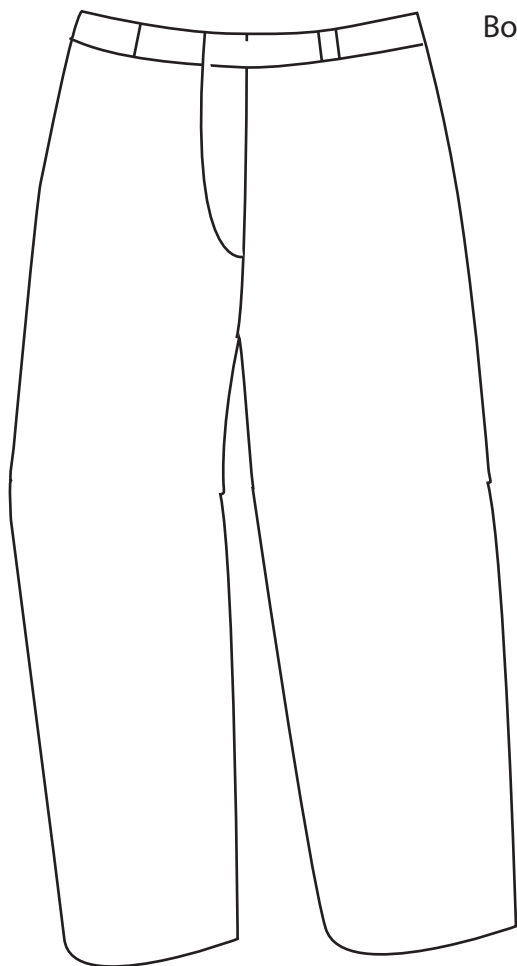


Enlarge Templates 400%  
Reversed for Fusible Applique

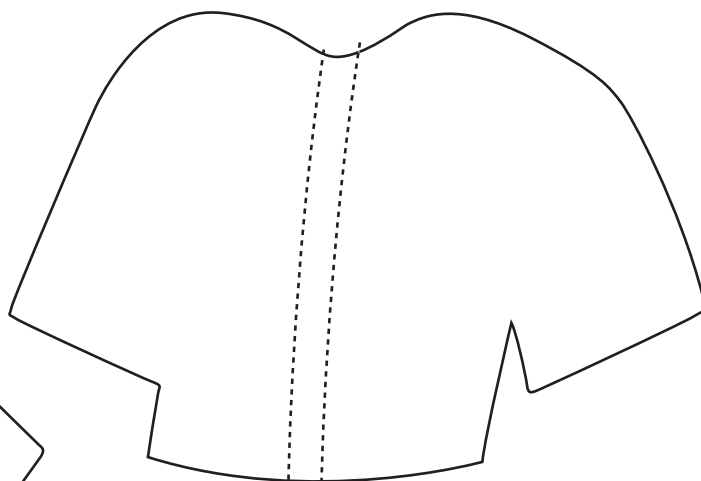
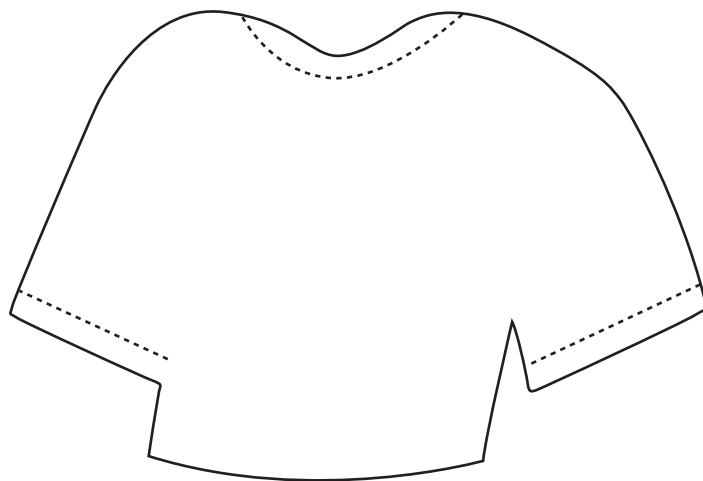


□  
Square should measure  
1" **AFTER** enlarging  
templates 400%

Enlarge Templates 400%  
Reversed for Fusible Applique

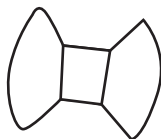


Boy's Clothes



Optional Flat  
Bow Tie templates  
See instructions  
if you would rather  
make a 3-D  
Bow Tie

Boy's Accessories



Boy's Shoes



Square should measure  
1" **AFTER** enlarging  
templates 400%

