

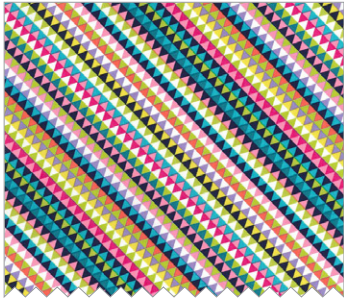
BIAS TILES



SIZE: 43" X 57" | SKILL LEVEL: CONFIDENT BEGINNER | DESIGNED BY MARINDA STEWART

FABRIC REQUIREMENTS

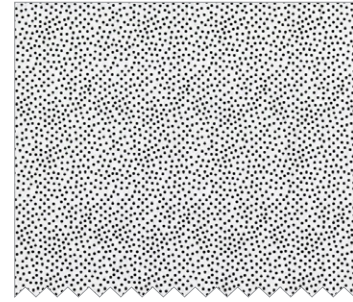
BACKING AND BATTING: 48" X 62"



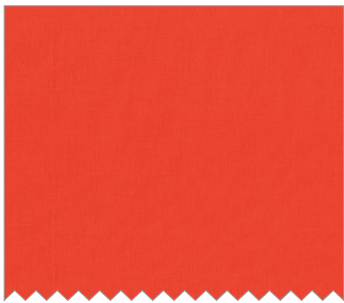
CX7276 Jewel
Bias Tile
1 1/8 yards



SC5333 Lavendar
Cotton Couture
1/6 yard



CX1065 Dalmatian
Garden Pindot
3/8 yard



SC5333 Coral
Cotton Couture
1/6 yard



SC5333 Midnight
Cotton Couture
1/2 yard



SC5333 Turquoise
Cotton Couture
1/6 yard



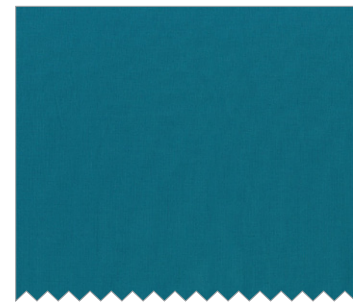
CM0376 Bright White
Fairy Frost
3/8 yard



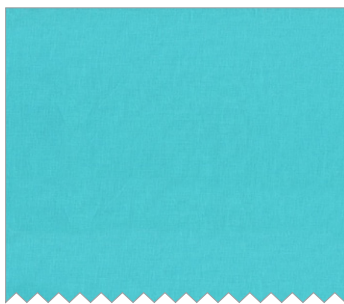
SC5333 Avocado
Cotton Couture
3/8 yard



SC5333 Magenta
Cotton Couture
1/6 yard



SC5333 Lagoon
Cotton Couture
1/6 yard



SC5333 Luna
Cotton Couture
1/6 yard



SC5333 Grass
Cotton Couture
3/8 yard



SC5333 Starfruit
Cotton Couture
1/6 yard



SC5333 Peony
Cotton Couture
3/8 yard

Bias Tiles

Size: 43" x 57"

Skill Level: Confident Beginner

Designed by Marinda Stewart

FABRICS	YARDAGE	CUTTING
(4) CX7276 Jewel Bias Tile	1 1/8 yards	(5) 2 1/2" x W.O.F. – binding (18) Fussy cut triangles * & ** (12) triangles ***
(1) SC5333 Lavender Cotton Couture	1/6 yard	(12) triangles
(2) CX1065 Dalmatian Garden Pindot	3/8 yard	(19) triangles
(3) SC5333 Coral Cotton Couture	1/6 yard	(10) triangles
(5) SC5333 Midnite Cotton Couture	1/2 yard	(33) triangles
(6) SC5333 Turquoise Cotton Couture	1/6 yard	(12) triangles
(7) SC5333 Bright White Cotton Couture	3/8 yard	(24) triangles
(8) SC5333 Avocado Cotton Couture	3/8 yard	(17) triangles
(9) SC5333 Magenta Cotton Couture	1/6 yard	(10) triangles
(10) SC5333 Lagoon Cotton Couture	1/6 yard	(9) triangles
(11) SC5333 Luna Cotton Couture	1/6 yard	(12) triangles
(12) SC5333 Grass Cotton Couture	3/8 yard	(17) triangles
(13) SC5333 Starfruit Cotton Couture	1/6 yard	(12) triangles
(14) SC5333 Peony Cotton Couture	3/8 yard	(17) triangles
* 60 degree triangles measure 5 3/4" on each of three sides and is 4 3/4" tall base to point ** (3) sets of (6) matching triangles with stripes aligned with the bottom edge of the triangle pattern *** (2) sets of (6) matching triangles with stripes vertically placed from point of triangle to the base of the triangle		
ALSO NEEDED: 48" X 62" backing, 48" x 62" batting, thread to match, scissors, straight pins, rotary cutter, acrylic ruler, and mat. OPTIONAL: (BUT RECOMMENDED) 60-degree triangle ruler		

Directions: This quilt is assembled in horizontal rows. Each fabric has been assigned a number. Sew together in the listed sequence left to right using (18) triangles a row. Join rows in order. Refer to photo for fabric #4 placement.

1. Row #1 – 1, 2, 3, 4, 4,4, 5, 6, 7, 8, 9, 5, 10, 11, 5, 12, 6, 5
2. Row #2 – 13, 1, 7, 4, 4, 4, 14, 5, 6, 2, 8, 9, 5, 10, 11, 5, 12, 6
3. Row #3 – 5, 13, 1, 7, 3, 12, 2, 14, 5, 6, 7, 4, 4, 4, 10, 11, 5, 12
4. Row #4 – 8, 5, 13, 1, 2, 3, 12, 7, 14, 5, 6, 4, 4, 4, 5, 10, 11, 5
5. Row #5 – 7, 8, 5, 13, 1, 6, 3, 12, 2, 14, 5, 6, 7, 8, 9, 5, 10, 11
6. Row #6 – 11, 2, 8, 5, 13, 1, 4, 4, 4, 7, 14, 5, 6, 2, 8, 9, 5, 10
7. Row #7 – 14, 11, 7, 8, 5, 13, 4, 4, 4, 12, 2, 14, 5, 6, 7, 8, 9, 5
8. Row #8 – 9, 14, 11, 2, 8, 5, 13, 1, 7, 3, 12, 7, 14, 5, 6, 2, 8, 9
9. Row #9 – 2, 9, 14, 11, 7, 8, 5, 13, 1, 7, 3, 12, 2, 4, 4, 4, 7, 8
10. Row #10 – 12, 7, 9, 14, 11, 2, 8, 5, 13, 1, 2, 3, 12, 4, 4, 4, 6, 7
11. Row #11 – 6, 12, 2, 4, 4, 4, 7, 8, 5, 13, 1, 7, 3, 12, 2, 14, 5, 6
12. Row #12 – 14, 6, 12, 4, 4, 4, 11, 2, 8, 5, 13, 1, 7, 3, 12, 7, 14, 5
13. Row #13 – 5, 14, 6, 12, 7, 9, 14, 11, 7, 8, 5, 13, 1, 2, 3, 12, 2, 14
14. Trim vertical sides of quilt into a straight edge.
15. Layer backing, batting, and quilt top. Baste.
16. Quilt as desired.
17. Bind quilt using CX7276 2 ½” strips pieced as needed for length.

OPTIONAL: ACCENT PILLOW

(21) Assorted 60 degree triangles (from left over fabric)
(1) 12" x 16" pillow form
(1) 13" x 17" piece for batting
(2) 13" x 10" pieces – pillow backing
(60") CX7276 2 ½" wide strip – pieced as needed for binding

Directions:

1. Sew together (3) rows of (7) triangles
2. Sew rows together. Trim uneven sides to measure 13" x 16".
3. Place pillow top on batting. Quilt as desired.
4. Turn under ¼" edge on 13" side of each 13" x 10" piece. Turn under another ¼" and topstitch to finish the edge.
5. Overlap the two sewn edges in the center wrong sides up to measure 13" x 16". Place pillow top right side up on top aligning all raw edges. Pin to hold. Stitch ½" from edge on all (4) sides.
6. Using CX7276 2 ½" strips folded in half, bind all raw edges. Miter corners. Turn under raw edges. Fold binding in the back. Stitch in place.
7. Insert pillow form to finish.