

POSEYS APLENTY



SIZE: 40" W X 52.5 - 55.5" H | LEVEL: CONFIDENT BEGINNER | DESIGNED BY MARINDA STEWART

FABRIC REQUIREMENTS

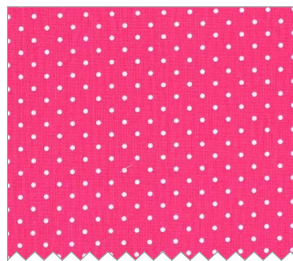
46" X 60" BACKING AND BATTING



DC6870 Turquoise
Little Leaves
5/8 yard



DC6867 Periwinkle
Folk Floral Dot
Fat 1/8



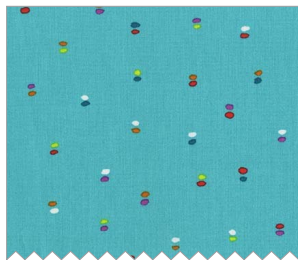
CX5514 Princess
Pinhead
Fat 1/8



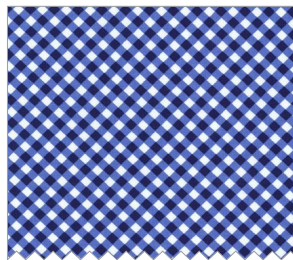
CX6866 Starfruit
Double Dot
Fat 1/8



DC6867 Mermaid
Folk Floral Dot
Fat 1/4



DC6866 Turquoise
Double Dot
Fat 1/8



CX6568 Midnite
Cross Check
1/6 Yard



CX3663 Midnite
Posey Border
1 5/8 Yards



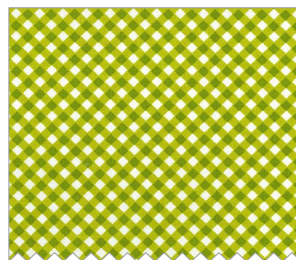
SC5333 Magenta
Cotton Couture
1/8 yard



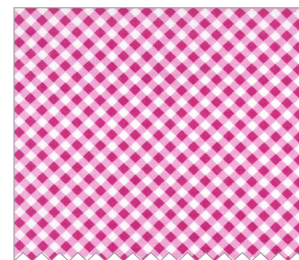
SC5333 Bright White
Cotton Couture
1 yard



SC5333 Grass
Cotton Couture
Fat 1/8



CX6568 Avocado
Cross Check
6" x 10" Piece



CX6568 Peony
Cross Check
5" x 10" Piece



Poseys Aplenty

Quilt designed by Marinda Stewart

Skill Level: Confident Beginner

Size: 40" W x 52 ½" ~ 55 ½" *

Fabrics	Yardage	Cutting
CX3663 Midnite Posey Border	1 5/8 yards	** (2) 11 ¼" x L.O.F. (length of fabrics) *** (2) 3 ¼" x L.O.F. **** (5) 2 ½" x L.O.F. - binding
DC6870 Turquoise Little Leaves	5/8 yard	(14) 7" squares
DC6867 Periwinkle Folk Floral Dot	Fat 1/8	(3) 7" squares
CX5514 Princess Pinhead	Fat 1/8	(3) 7" squares
DC6866 Starfruit Double Dot	Fat 1/8	(3) 7" squares
DC6867 Mermaid Folk Floral Dot	Fat 1/4	(3) 7" squares (7) 1 1/8" x 11"
DC6866 Turquoise Double Dot	Fat 1/8	(2) 7" squares
CX6568 Midnite Cross Check	1/6 yard	(28) 2 ¼" squares
SC5333 Magenta Cotton Couture	1/8 yard	(28) 1 ¼" squares
SC5333 Bright White Cotton Couture	1 yard	(7) 3 ½" x 14 ½"
SC5333 Grass Cotton Couture	Fat 1/8	<u>See Patterns:</u> (2) Large Leaves (6) Small Leaves
CX6568 Avocado Cross Check	6" x 10" piece	<u>See Patterns:</u> (6) Small Leaves
CX6568 Peony Cross Check	5" x 7"	<u>See Patterns:</u> (7) 2 ¼" Circles

ALSO NEEDED: 45" X 60" backing, 45" x 60" batting, threads to match, scissors, straight pins, rotary cutter, acrylic ruler, mat, fusible web, and small amount of fiberfill stuffing

* Individual cutting and saving variations will affect the overall length of the finished strip. See directions

** Center on border motif.

*** Trim scallop edge to proper width - Please refer to step #8

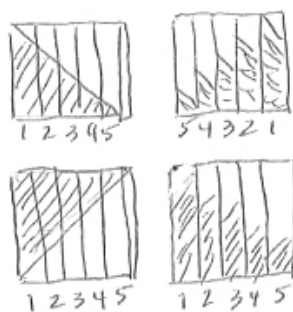
**** Cut from printed background fabric

Note: Make the pieced outer borders first. Then cut the CX3663 border fabric to fit the finished length.

Directions:

1. To make the outer pieced border – place one DC6870 7” square right sides together on top of one DC6867 Periwinkle 7” square. Draw a diagonal line from corner to corner. Stitch $\frac{1}{4}$ ” on each side of the stitched line. Cut apart. Press open. Trim each right square triangle to an accurate $6\frac{1}{2}$ ” square. Make (6) DC6870 and DC6867 Periwinkle units, (6) DC6870 and DC6867 Mermaid, (6) DC6870 and CX5514, (6) DC6870 and DC6866 Starfruit, and (4) DC6870 and DC6866 Turquoise.

2. Cut one right square triangle into (5) $1\frac{1}{4}$ ” W x $6\frac{1}{2}$ ” H pieces. There will be a $\frac{1}{4}$ ” piece left over. Discard the $\frac{1}{4}$ ” strip. Cut apart each right square triangle in the same manner. Carefully stack the unsewn strips together in the order they have been cut. Cut half the blocks in the one direction and half the blocks in the opposite direction to create right and left pairs as shown.



3. To assemble the block, choose one each of the five different combinations and sizes to sew together into one unit. Flip the tip of each piece to get the zig-zag edge at the top of the block as shown. Make a right facing pair and a left facing pair. Make (14) pairs.



4. Place one CX6568 Midnite $2\frac{1}{4}$ ” square right sides together on top of the lower corner of the pieced mixed strips. Sew diagonally across the corner. Press open. Trim excess from the back. Repeat on the same corner using SC5333 Magenta $1\frac{1}{4}$ ” squares. Repeat for each right and left unit.

5. Sew together one right and one left unit together with the pieced corners aligned. Make (14) pieces total.

6. Sew together (7) double units into one strip. Make two.

7. Measure the finished outer borders for length. Cut the CX3663 $11\frac{1}{4}$ ” pieces to fit. Sew one to the inside edge of each pieced border as shown. Set aside.

8. Sew together the two CX3663 $3\frac{1}{4}$ ” x L.O.F. strips with the scallop edges aligned to make circles. Trim piece to fit the length of the pieced strips. Sew the two completed side panels to each side of the center panel.

9. Layer backing, batting, and quilt top. Baste.

10. Quilt as desired.

11. Bind quilt using CX3663 2 ½" x L.O.F. strips pieced as needed for length.
 12. For the center embellishment – For the flower – Sew one SC5333 Bright White 3 ½" x 14 ½" piece along the 3 ½" edge to make a tube. Fold with the wrong sides together. Align raw edges. With a threaded sewing needle, run a gathering stitch through both layers 1/8" from the raw edges. Before pulling the gathering thread tightly cut the folded edge approximately every ¼" around the entire circle. Cut to within ¼" of the stitching. Pull the gathers tightly. Knot off. Make (7) total. Set aside.
 13. For the fringe cut approximately every 1/8" along one side of (1) DC6867 Mermaid 1 1/8" x 11" piece. Cut to within ¼" of the opposite side. Using a threaded needle run a gathering stitch in the ¼" seam allowance. Pull gathers tightly. Knot off. Join ends to make a circle. Make (7) total. Sew one to the center of each white flower from step #12. Set aside.
 14. For the center – run a gathering stitch 1/8" from the edge around each CX6568 Peony 2 ¼" circle. Stuff the center lightly. Pull gathers together tightly. Knot off. Make (7) total. Sew one to the center of each flower as shown. Attach one flower at a time down the center of the quilt as shown.
 15. Cut out the leaf patterns. Fold the SC5333 grass fabric in half. Following the manufacturer's directions, iron the fusible web to one half of the fabric. Remove the paper backing. Iron the remaining half of the fabric on top. Trace (2) large leaves and (6) small leaves onto the fused fabrics. Free motion quilt the vein lines into each leaf. Sew along the outline of each leaf with a straight sewing machine stitch. Cut out each leaf as close as possible to the stitched outline.
- OPTIONAL but recommended: Machine satin stitch over the outside edge of each leaf to finish. Repeat using CX6568 avocado making (6) small leaves.
16. Machine stitch one large leaf to each end of the row of flowers as shown. Machine stitch one solid and one checked leaf in pairs between the flowers as shown to finish the quilt.

