

UP IN THE CLOUDS

From the Pitter Patter Collection
July 2015



FABRIC REQUIREMENTS

QUILT: 36" X 48" & PILLOW: 12" X 16"
1 1/2 YARDS FOR BACKING



CX7037 Rainbow
Showery
5/8 yard



CX7040 Pink
Splish Splash
7/8 yard



CX7041 Mist
Drizzle
5/8 yard



CX7038 Coral
Cloudy
3/8 yard



CX7038 Sunkist
Cloudy
1/4 yard



CX7038 Cloudy
Cloudy
1/4 yard



CX7042 Rainbow
Drip Dot
1/2 yard



CX7039 Twilight
Starry
3/4 yard



CX7039 Twinkle
Starry
3/8 yard



CX7039 Starfruit
Starry
3/8 yard

Up in the Clouds Pillow & Sham

Quilt: 36" x 48"

Pillow: 12" x 16"

Fabric	Yardage	Cutting
CX7037 Rainbow Showery	5/8 yard	Clouds 6, 16, 24, 8, 15 and 20 (8)
CX7040 Pink Splish Splash (includes 3/8 yard for pillow back)	7/8 yard	Clouds 5 (cut 2), 13, 26, 19 and 23 (5) (pillow backs)
CX7041 Mist Drizzle	5/8 yard	Clouds 7, 15, 20, 6, 13 and 22 (6) Rectangle 5 1/2" x 2"
CX7042 Rainbow Drip Dot	1/2 yard	Clouds 1, 11, 19, 4, 9, 14 and 21 (14, rectangle)
CX7038 Sunkist Cloudy (orange)	1/4 yard	Clouds 4, 25, 7 and 26 (12)
CX7038 Cloudy Cloudy (gray)	1/4 yard	Clouds 1, 14 and 25 (11)
CX7038 Coral Cloudy (red)	3/8 yard	Clouds 2, 9, 17, 12 and 17
CX7039 Twilight Starry (purple)(includes quilt binding and pillow cording)	3/4 yard	Clouds 10, 23, 2 and 11 Cut 5 2 1/2" x WOF for binding (Cut 3 1 1/2" by 12" bias strips)
CX7039 Twinkle Starry (pink)	3/8 yard	Clouds 2, 8, 18, 10 and 3 (rectangle)
CX7039 Starfruit Starry (yellow)	3/8 yard	Clouds 12, 22, 3, 16 and 18 (7)

1 ½ yard backing for quilt

14" x 18" piece backing for pillow

You will also need: thread to match fabrics, sewing machine, pins, a sewing needle, iron, scissors, 26" by 38" piece of tracing paper and tracing paper for cloud patterns, pencil and ruler, water soluble marking pen; 40" x 52" piece quilt batting for quilt; 14" x 18" piece quilt batting, three 5/8" buttons, 1 5/8 yard 1/8" diameter cording and 12" x 16" pillow insert for pillow.

Pattern and Cutting

1. Draw a 2" grid on a 26" by 38" piece of tracing paper. Enlarge the master pattern for the clouds including the numbers.
2. To make patterns for the clouds, trace each cloud onto tracing paper. Add ¼" seam allowance to the top edge and side and ½" seam allowance to the bottom edges. Add ½" to the edges along the sides of the rectangle. Number each cloud.
3. Cut the clouds and the rectangles from the fabrics indicated on the cutting chart. Using a water soluble marking pen, write the number on each fabric cloud.

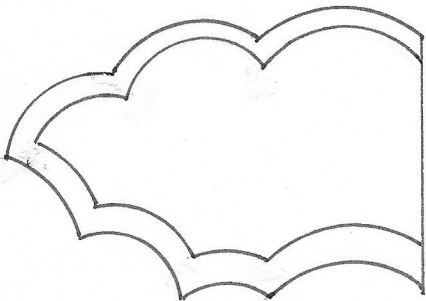
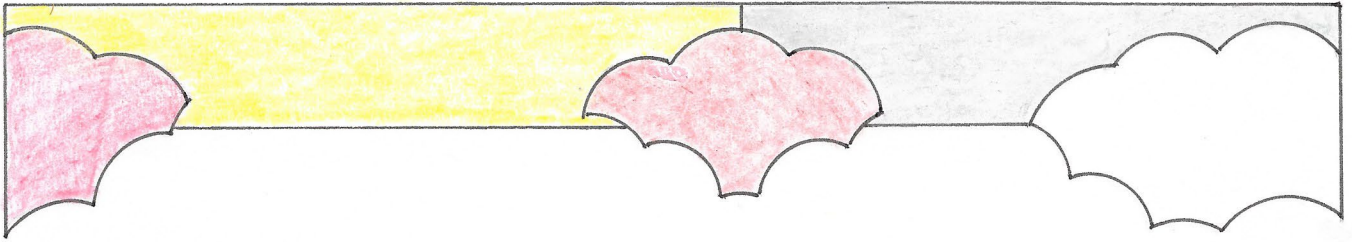
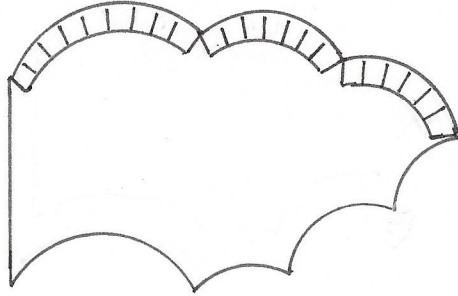
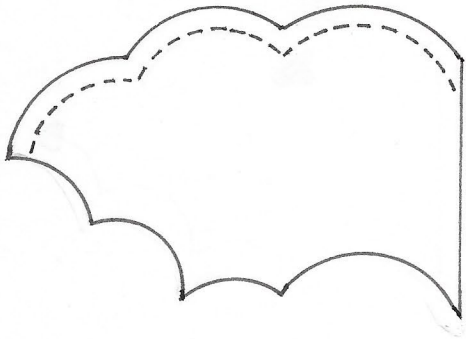
Directions for Quilt

1. Using matching thread, stitch along the seamline of the top and side edges of each cloud. Clip the seam allowances almost the stitching. Press under the seam allowance along the stitching.
2. Stitch the rectangles for the top edge together along one short end.
3. Following the photo and the master pattern, pin each cloud in place beginning at the top edge pinning clouds 1, 2 and 3 to the rectangles using your master pattern as a guide. Stitch each cloud in place along the top and side edges using matching thread and a blind hem stitch.
4. Trim the edges if necessary to make a rectangle. Trim the seam allowance along the lower edge of the clouds close to ¼".
5. Repeat joining clouds 7-26 a row at a time to complete the quilt top.

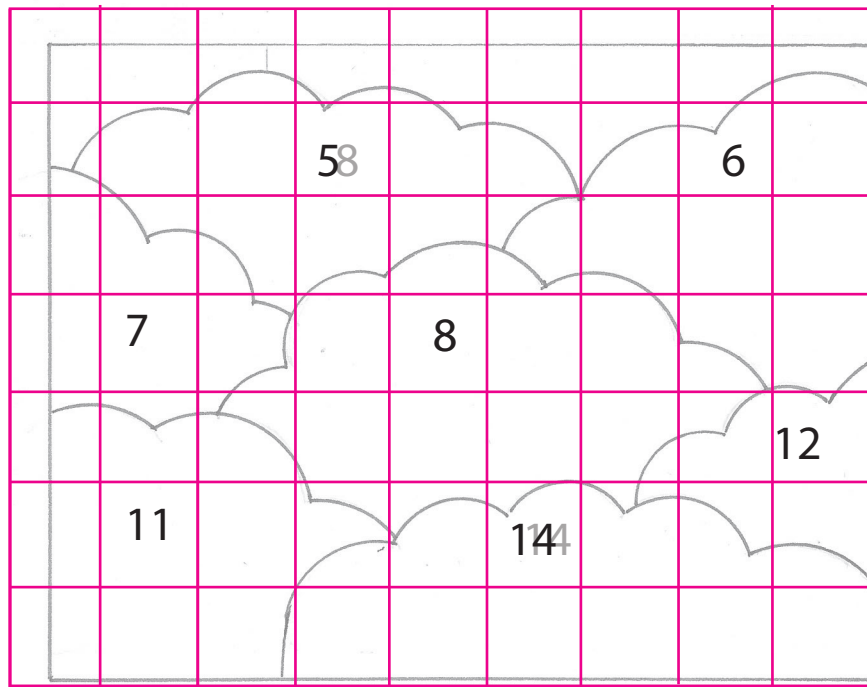
6. Trim the edges if necessary to make a rectangle.
7. Layer the backing, batting and quilt top. Quilt along the top edges of the clouds. Echo quilt inside each cloud as desired.
8. Place the large back piece over the small back piece so they make a rectangle 17" long. Baste the overlapping edges together. Sew buttons in place under the buttonholes.

Directions for Pillow

1. Following steps 1-4 for the quilt, assemble the clouds and rectangles.
2. Layer the backing, batting and pillow top. Quilt along the top edges of the clouds. Echo quilt inside each cloud as desired.
3. To make cording, stitch the bias strips together along the straight grain edges using a $\frac{1}{4}$ " seam allowance.
4. Fold the cording in half with right sides together inserting the cording inside along the fold. Baste along the edge of the cording using a zipper foot.
5. Pin the cording around the right side of the pillow top matching the raw edges. Join the ends neatly. Baste the cording to the pillow along the previous basting.
6. Turn under 1" then 1" again on one 23" edge of each pillow back piece. Stitch the hems in place. Mark one buttonhole in the center of the hem of the large back piece. Then mark two additional buttonholes each $4\frac{1}{4}$ " from the center.
7. Place the large back piece over the small back piece so they make a rectangle 29" long. Baste the overlapping edges together. Sew buttons in place under the buttonholes.
8. Pin the front and back together along the edges. Stitch them together along the seamline of the cording. Zigzag along the edge of the seam allowance.
9. Turn pillow cover right side out.

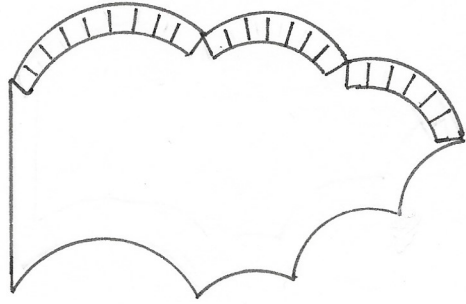


Cloud Pillow Pattern

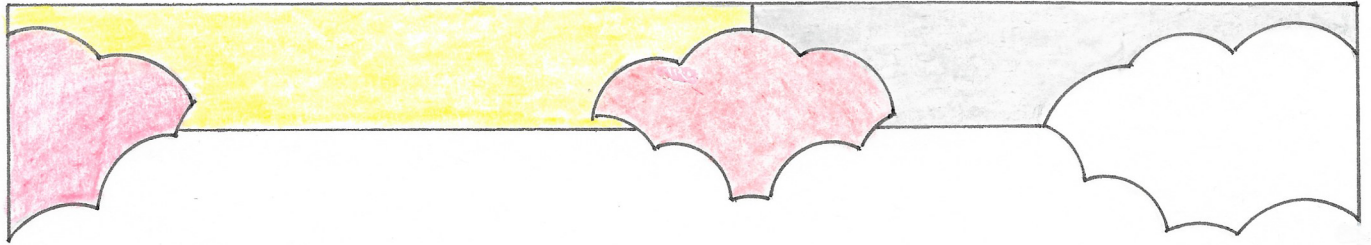


Each Square = 2"

1.



3.



4.



Pattern and Cutting 2.



