

MEADOW



SIZE: 57" X 57" | SKILL LEVEL: CONFIDENT BEGINNER | QUILT DESIGNED BY TARA FAUGHNAN

FABRIC REQUIREMENTS

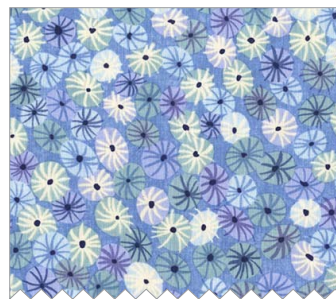
3 3/4 YARDS BACKING & 1/2 YARD BINDING



DC7080 Lilac
Flutter By Clouds
1/2 yard



DC7080 Navy
Flutter By Clouds
3/8 yard



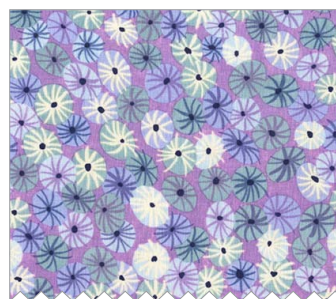
DC7083 Periwinkle
Meadow Puffs
1/2 yard



DC7081 Seafoam
Butterfly Blossoms
1/2 yard



DC7082 Sky
Little Posies
1/2 yard



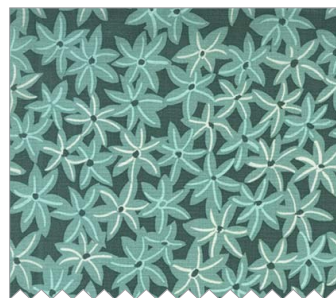
DC7083 Lilac
Meadow Puffs
1/2 yard



DC7084 Magenta
Star Flowers
3/8 yard



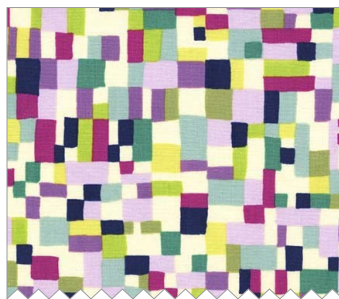
DC7084 Navy
Star Flowers
1/2 yard



DC7084 Seafoam
Star Flowers
5/8 yard



DC7086 Magenta
Ribbon Stripe
1 yard including binding



DC7087 Navy
Tiny Patches
1/2 yard



SC5333 Sailor
Cotton Couture
3 3/4 yards



DC7085 Navy
Seaside Garden
5/8 yard

Meadow quilt

CUTTING

FABRIC	YARDAGE	8" square	3" square	8" by 3" rectangle
DC7080 Lilac Flutter-By Clouds	1/2	2	26	2
DC7080 Navy Flutter-By Clouds	3/8		42	3
DC7081 Seafoam Butterfly Blossoms	1/2	2	21	4
DC7082 Sky Little Posies	1/2	4	21	2
DC7083 Lilac Meadow Puffs	1/2	2	42	2
DC7083 Periwinkle Meadow Puffs	1/2	3	22	
DC7084 Magenta Star Flowers	3/8		33	4
DC7084 Navy Star Flowers	1/2	2	28	2
DC7084 Seafoam Star Flowers	5/8	2	42	2
DC7085 Navy Seaside Garden	5/8	4	39	3
DC7086 Magenta Ribbon Stripe	1/2	2	21	1
DC7087 Navy Tiny Patches	1/2	1	29	
Binding- DC7086 Magenta Ribbon Stripe	1/2			
Backing SC5333 Sailor Cotton couture	3 3/4			

Meadow Quilt

57" by 57"

Tara Faughnan

MATERIALS:

- Refer to cutting chart for yardage requirements
- Rotary cutting supplies
- Low loft batting
- Sew all seams using an exact 1/4" seam allowance
- Refer to the cutting chart for all fabric requirements

This quilt is made up of 5 different blocks: a nine patch block, a cross block, a corner patch block, a rectangle block and a three patch block.

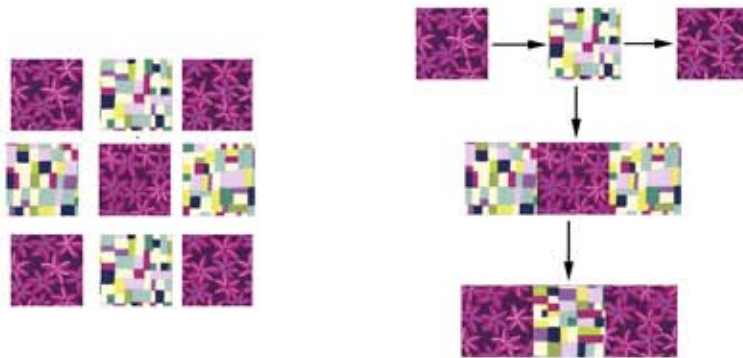
NINE PATCH BLOCK ASSEMBLY:

Lay out nine 3" squares as shown below. Sew squares together into rows.

Press seams in opposite directions starting with the top row. Sew rows together for final block.

Make 16 nine patch blocks in the combinations shown below.

Be aware of the direction on the striped fabric when you are sewing the block together.



CROSS BLOCK ASSEMBLY:

Lay out six 3" squares and one 3" by 8" rectangle as shown below.

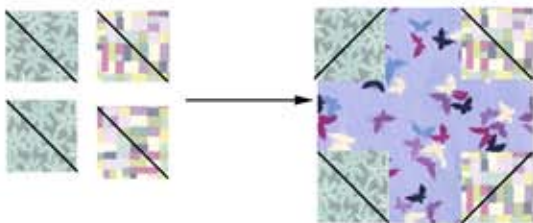
Sew squares into rows and press seams. Sew the two rows and the rectangle together and press seams.

Make 9 cross blocks in the combinations shown below.

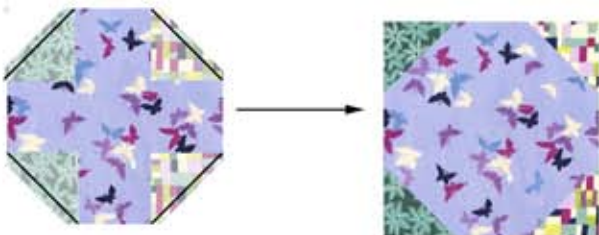
Be aware of the direction on the striped fabric when you are sewing the block together.

**CORNER PATCH BLOCK ASSEMBLY:**

Draw a line diagonally across the wrong side of four 3" squares. Place the squares right sides together (RST) in the corners of the 8" square as shown below.



Sew along the drawn line, trim off excess fabric 1/4" away from the seam and press seams to the outside.



RECTANGLE BLOCK ASSEMBLY:

Draw a line diagonally across the wrong side of two 3" squares. Place the squares RST in the corners of the 8" x 3" rectangle as shown below.



Sew along the drawn line, trim off excess fabric 1/4" away from the seam and press seams to the outside.



Make 16 rectangle blocks in the combinations shown below.

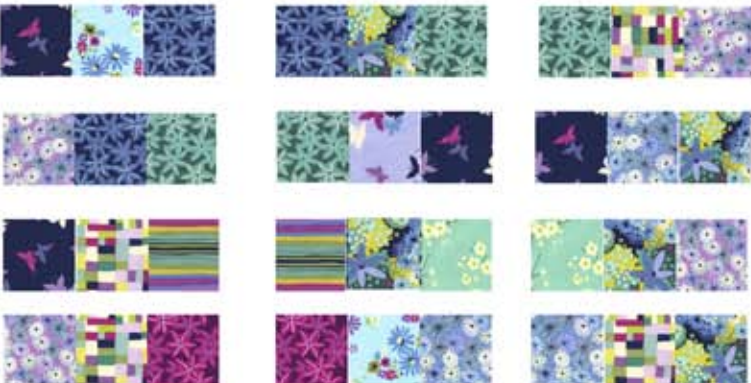
Be aware of the direction on the striped fabric when you are sewing the block together.

**3 PATCH BLOCK ASSEMBLY:**

Sew together three 3" squares as shown below. Press seams to the side.



Make 12 blocks in the combinations shown below.



Lay out the pieces following the quilt diagram below. In addition to the blocks, you will need four 3" squares for the corners.

Sew row 1 together, pressing seams in the same direction as you go.

Sew row 2 together, pressing seams in the opposite direction from row 1.

Continue sewing all 9 rows, pressing seams in the opposite direction from the row above.

Sew the rows together for final quilt top.

Layer top, batting and backing together and quilt as desired.

