

MIRAGE



SIZE: 64" W X 72" H | QUILT DESIGNED BY TARA FAUGHNAN

FABRIC REQUIREMENTS

Backing & Batting: 70" x 78"



DC6837 Azure
Goldfinch
1/3 yard



DC6837 Plum
Goldfinch
1/3 yard



DC6838 Sky
Chirp
Fat 1/4



DC6838 Orchid
Chirp
1/3 yard



DC6839 Azure
Growl
Fat 1/4



DC6841 Azure
Peacock Plume
1/3 yard



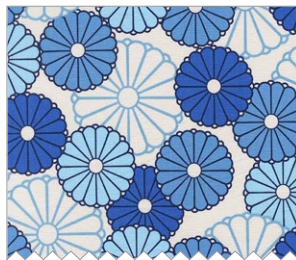
DC6841 Navy
Peacock Plume
Fat 1/4



DC6841 Plum
Peacock Plume
Fat 1/4



DC6843 Orchid
Lotus
3/4 yard



DC6845 Azure
Parasols
Fat 1/4



DC6845 Plum
Parasols
1/3 yard



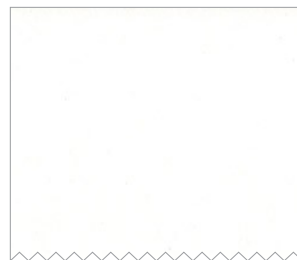
DC6846 Azure
Obi
Fat 1/4



DC6846 Orchid
Obi
1/3 yard



DC6847 Sky
Shanghai
1/3 yard



SC5333 Bright White
Cotton Couture
2 3/4 yards

Mirage Quilt by Tara Faughnan
Quilted by Terri Carpenter

64" by 72"

FABRIC	YARDAGE	
DC6837 Goldfinch Azure	1/3 yd	Cut three 9" squares. Cut four 2.75" squares.
DC6837 Goldfinch Plum	1/3 yd	Cut three 9" squares. Cut eight 2.75" squares.
DC6838 Chirp Sky	Fat quarter	Cut two 9" squares.
DC6838 Chirp Orchid	1/3 yd	Cut three 9" squares.
DC6839 Growl Azure	Fat quarter	Cut two 9" squares.
DC6841 Peacock Plume Azure	1/3 yd	Cut three 9" squares. Cut six 2.75" squares.
DC6841 Peacock Plume Navy	Fat quarter	Cut two 9" squares. Cut four 2.75" squares.
DC6841 Peacock Plume Plum	Fat quarter	Cut two 9" squares. Cut six 2.75" squares.
DC6843 Lotus Orchid	3/4 yds	Cut three 9" squares. Cut four 2.75" squares. Use the remaining yardage for binding.
DC6845 Parasols Azure	Fat quarter	Cut two 9" squares. Cut nine 2.75" squares.
DC6845 Parasols Plum	1/3 yd	Cut three 9" squares. Cut seven 2.75" squares.
DC6846 Obi Azure	Fat quarter	Cut two 9" squares. Cut six 2.75" squares.
DC6846 Obi Orchid	1/3 yd	Cut three 9" squares. Cut thirteen 2.75" squares.
DC6847 Shanghai Sky	1/3 yd	Cut three 9" squares. Cut five 2.75" squares.
SC5333 Cotton Couture Bright White	2 3/4 yds	Cut thirty-six 9" squares. Cut seventy-two 2.75" squares.
Backing	4 yds (need 70" by 78")	
Batting	70" by 78"	

Mirage Quilt

64" by 72"

Made by Tara Faughnan

Quilted by Terri Carpenter

MATERIALS:

Refer to cutting chart for yardage requirements

rotary cutting supplies

low loft batting

marking pen or pencil

4 yards fabric for backing and binding

Sew all seams using an exact 1/4" seam allowance.

Refer to the cutting chart for all fabric requirements

BLOCK ASSEMBLY:

The following directions will give you a pair of blocks. For each pair you will need:

one 9" square of SC5333 Bright White

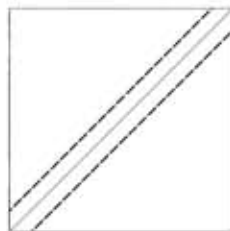
one 9" square of Print A

two 2.75" squares of SC5333 Bright White

one 2.75" square of Print B

one 2.75" square of Print C

1. Place one 9" square of SC5333 Bright White RST (right sides together) with one of the 9" square prints (Print A)
2. Draw a line diagonally across the back of one of squares from corner to corner.
- 3 Sew on either side of the line using an exact 1/4" seam allowance.



4. Cut the square apart along the drawn line, and press both pieces open towards the print. You now have 2 half square triangles.



5. Square up the blocks to 8.5"

6. Take one of the 2.75" squares of SC5333 Bright White , and the 2.75" square of Print B and draw a line diagonally from corner to corner on the back of each of the squares.
7. Place the 2.75" square of SC5333 Bright White on top of the Print A, aligning the corners.
8. Sew along the drawn line, trim excess fabric leaving a 1/4" seam and press open.



SEW along drawn line



Cut off excess fabric

9. Place the 2.75" square of Print B on top of the SC5333 Bright White. Sew along the drawn line, trim excess fabric leaving a 1/4" seam and press open.

10. Repeat step 6-9 for the other half square triangle block, using a different fabric (Print C)



print A



print B



print C

11. Make 36 pairs of blocks following the quilt picture for print placement

QUILT ASSEMBLY:

- 1.. Layout the blocks following to the quilt picture for block placement.
2. Sew the blocks into rows, sew the rows together to finish the top.
3. Layer the quilt top, batting and backing together, baste, and quilt as desired