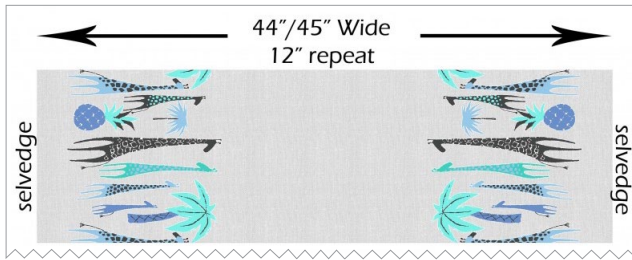


GIRAFFES, OH MY!



SIZE: 44" W X 60" H | SKILL LEVEL: CONFIDENT BEGINNER | QUILT DESIGNED BY MARINDA STEWART

FABRIC REQUIREMENTS Backing & Batting: 48" x 65"



CX6891 Blue
Giraffe Border
3/8 yard



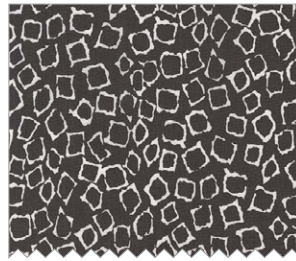
CX6898 Mist
Bark Cloth
1 yard



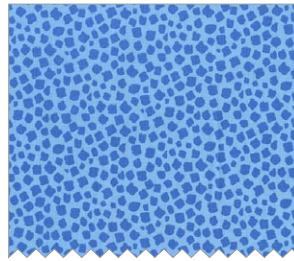
CX6898 Charcoal
Bark Cloth
1/6 yard



CX6897 Blue
Migration
3/8 yard



CX6893 Charcoal
Geo Giraffe
3/8 yard



CX6896 Blue
Giraffe Spots
1/4 yard



CX6898 Blue
Bark Cloth
3/8 yard



CX6898 Turquoise
Bark Cloth
1/4 yard



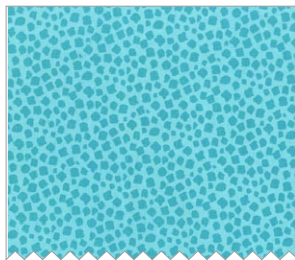
CX6892 Blue
Pineapple Palm
3/8 yard



CX6894 Blue
Palm Stripe
3/8 yard



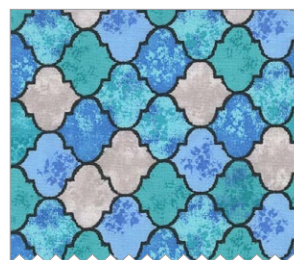
CX6893 Sky
Geo Giraffe
1/6 yard



CX6896 Turquoise
Giraffe Spots
1/8 yard



CX6893 Mist
Geo Giraffe
1/6 yard



CX6895 Blue
Tangier Tile
7" x 14" piece



CX6896 Charcoal
Giraffe Spots
1/2 yard

Giraffes, Oh My

Quilt by Marinda Stewart

Size: 44" W x 60" H

Skill Level: Confident Beginner

Fabric	Yardage	Cutting
CX6891 Blue Giraffe Border	3/8 yard	(2) 10 1/2" x 17 1/2"
CX6898 Mist Bark Cloth	1 yard	(1) 24 1/2" x 40 1/2" (22) 2 1/2" squares (1) 2 1/2" x 44 1/2" *
CX6898 Charcoal Bark Cloth	1/6 yard	(2) 1" x 41 1/2" (2) 1" x 24 1/2" (2) 1 1/2" x 10 1/2" Ears, horns, eye, tail large giraffe (see pattern)
CX6897 Blue Migration	3/8 yard	(1) 2 1/2" x 25 1/2" ** (2) 2 1/2" x 24 1/2" ** (1) 1 1/2" x 44 1/2" *
CX6898 Turquoise Bark Cloth	1/4 yard	(6) 2 1/2" x 17 1/2" (6) leaves
CX6893 Charcoal Geo Giraffe	3/8 yard	(1) large giraffe (see pattern)
CX6896 Blue Giraffe Spots	1/4 yard	(1) small giraffe (see pattern)
CX6898 Blue Bark Cloth	3/8 yard	(24) 2 1/2" squares (5) 2 1/2" x 7 1/2" Ears, eye, horns, tail – small giraffe (see pattern)
CX6896 Turquoise Giraffe Spots	1/8 yard	(2) 1" x 25" (1) 1" x 29 1/2"
CX6892 Blue Pineapple Palm	3/8 yard	(1) 3 1/2" x 30 1/2" * (2) 3 1/2" x 28"
CX6894 Blue Palm Stripe	3/8 yard	(1) 1" x 36 1/2" (2) 1" x 29" (11) 2 1/2" W x 7 1/2" H
CX6893 Sky Geo Giraffe	1/6 yard	(22) 2 1/2" squares
CX6893 Mist Geo Giraffe	1/6 yard	(24) 2 1/2" squares
CX6895 Blue Tangier Tile	7" x 14" piece	(2) 4 1/2" squares (cut on bias)
CX6896 Charcoal Giraffe Spots	1/2 yard	(6) 2 1/2" x W.O.F. - binding

ALSO NEEDED: 48" x 65" backing, 48" x 65" batting, threads to match, scissors, straight pins, rotary cutter, acrylic ruler, mat, and fusible web. OPTIONAL (but recommended) iron-on tear-away stabilizer and clear tape.

* Pieced for length

** Fussy cut on same stripes

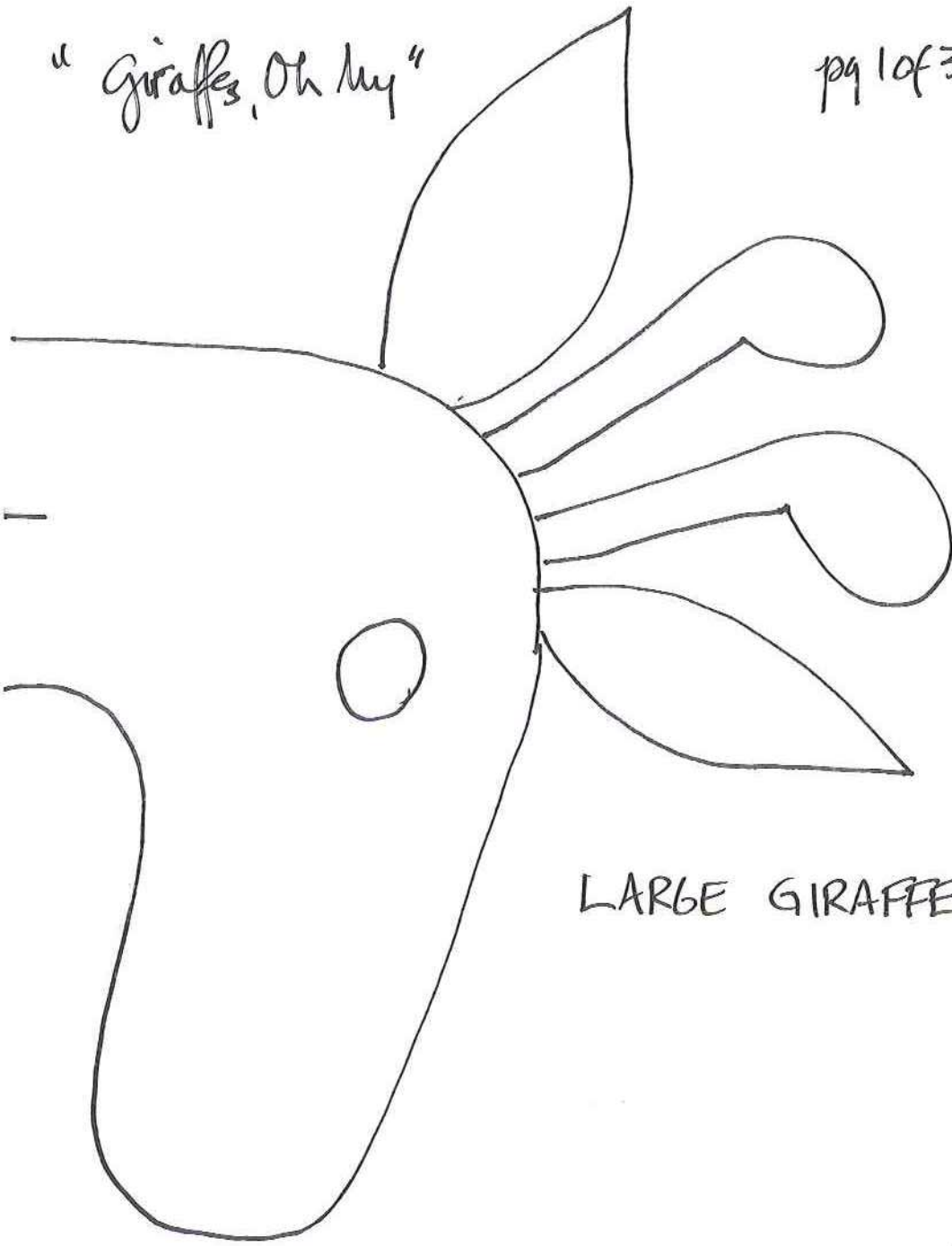
1. To prepare actual sized patterns – match the slash marks on each of the giraffes. Tape in place. Cut out.
2. Following manufacture's directions, trace all pattern pieces on the paper side of the fusible web. Reverse all of the images to get proper placement of the appliques. Rough cut out each pattern piece. Iron the large giraffe on the wrong side of CX6893 Charcoal, the eye, horns, ears, and tail on CX6898 Charcoal, the small giraffe on CX6896 Blue, the eye, horns, ears, and tail on CX6898 Blue and the leaves on CX6898 Turquoise. Cut out on pattern lines.
3. Remove paper backing from each pattern piece and arrange on CX6898 24 1/2" x 40 1/2" piece as shown. Iron in place. Machine satin stitch all raw edges to finish. Use a contrast thread for the leaves. Add the vein detail when stitching to finish.
4. Sew one CX6898 Charcoal 1" x 24 1/2" piece to the top and bottom of the appliqued panel. Sew one CX6898 Charcoal 1" x 41 1/2" piece to each side of the panel. Set aside.
5. To assemble the quilt, the borders around the top half of the panel are sewn on first then the border print (CX6891) pieces are added to each side. The bottom border is added last. Sew each side border to within 1/4" of the end. Border #1 sew one CX6897 2 1/2" x 25 1/2" piece to the top of the panel. Sew one CX6897 2 1/2" x 24 1/2" piece to each side. Align edges at the top. Sew to within 1/4" of the bottom of the fabric.
6. Border #2 – Sew CX6896 Turquoise 1" x 29 1/2" to the top and CX6896 Turquoise 1" x 25" to each side.
7. Border #3 – Sew one CX6892 3 1/2" x 28" piece to the top. Sew one CX6892 3 1/2" x 28" piece to each side.
8. Border #4 – Sew one CX6894 1" x 36" piece to the top and sew one Cx6894 1" x 29" to each side.
9. Border #5 – to make a checkerboard block 'A'. Sew together (2) CX6893 Sky 2 1/2" squares with (2) 6898 Mist 2 1/2" squares in a checkerboard pattern. Make (11) total. For block 'B' use (2) CX6893 Mist and (2) CX6898 Blue 2 1/2" squares. Make (12) total. Sew together (4) 'B' and (3) 'A' alternating blocks. Make (2) panels. Sew one to each side of the quilt. Sew together remaining (5) 'A' blocks and (4) 'B' blocks. Sew one CX6895 4 1/2" square to each end of the strip. Sew to the top of the quilt as shown. Set aside.
10. Sew one CX6898 Charcoal 1 1/2" x 10 1/2" piece to the top of the CX6891 10 1/2" x 17 1/2" piece. Make two. Sew one each to the bottom of the quilt borders on each side. Sew the side seam to the bottom of the quilt panel as shown.

11. For the bottom border with right sides together, place one CX6898 Mist 2 1/2" square on top of one CX6894 2 1/2" x 7 1/2" piece. Sew diagonally from corner to corner across the 2 1/2" square from the lower right corner to the upper left. Press open. Trim excess from the back. Make (11) left pickets total. For the right pickets make (6) using CX6898 Turquoise and (5) using CX6898 Blue. Reverse the directions of the stitching. Sew one left picket to one right picket to make (11) pairs. Sew together the pairs in an alternating color pattern as shown.
12. Sew one CX6897 1 1/2" x 44 1/2" piece (pieced for length) to the top (flat edge) of the pickets. Sew one CX6898 Mist 2 1/2" x 44 1/2" (pieced for length) to the bottom edge as shown. Sew completed panel to the bottom of the quilt.
13. Layer backing, batting, and quilt top. Baste.
14. Quilt as desired.
15. Bind quilt using CX6896 Charcoal 2 1/2" strips pieced as needed for length.

"Giraffes, Oh My"

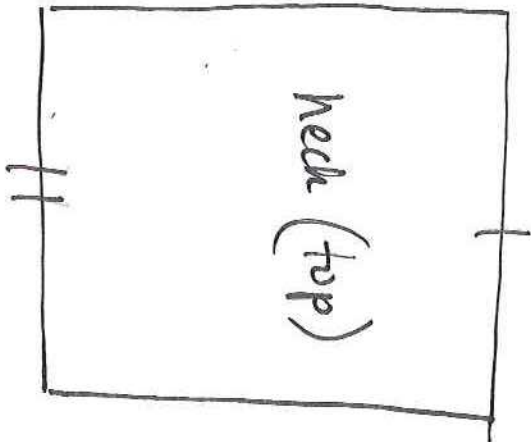
pg 1 of 3

11



LARGE GIRAFFE

Neck

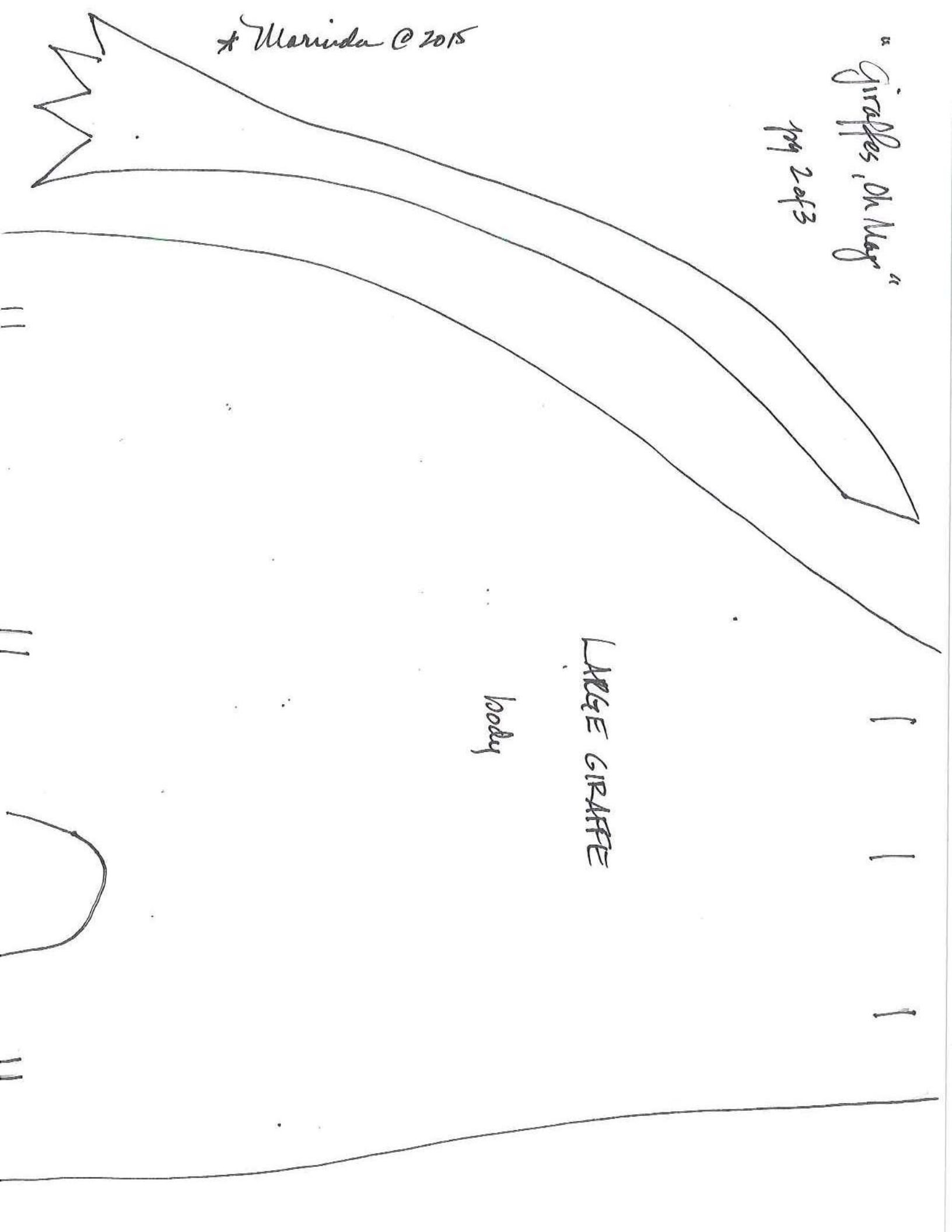


*Marinda ©2015

* Mariada © 2015

"giraffes, Oh My"

199 2 of 3



LARGE GIRAFFE

body

11

"Giraffes Only"
pg 3 of 3

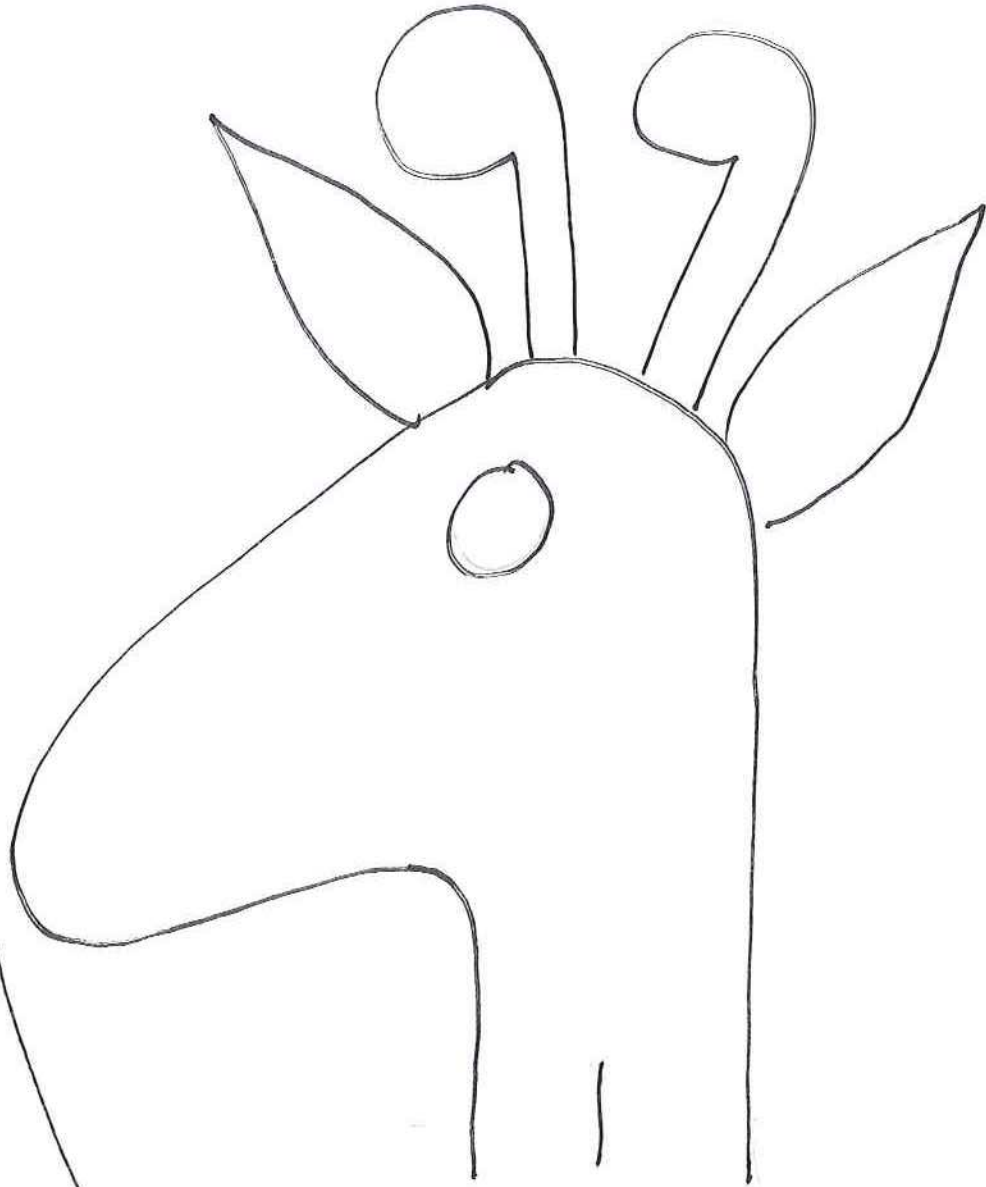
11

LARGE GIRAFFE
logs

11

*Merinda ©2015

"Giraffes, Oh My"
pg 1 of 2



SMALL GIRAFFE

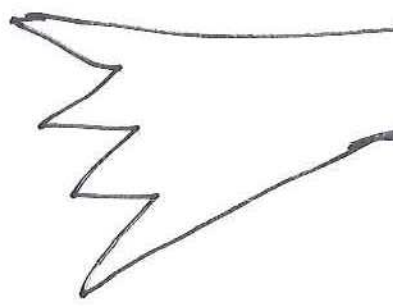
1

11

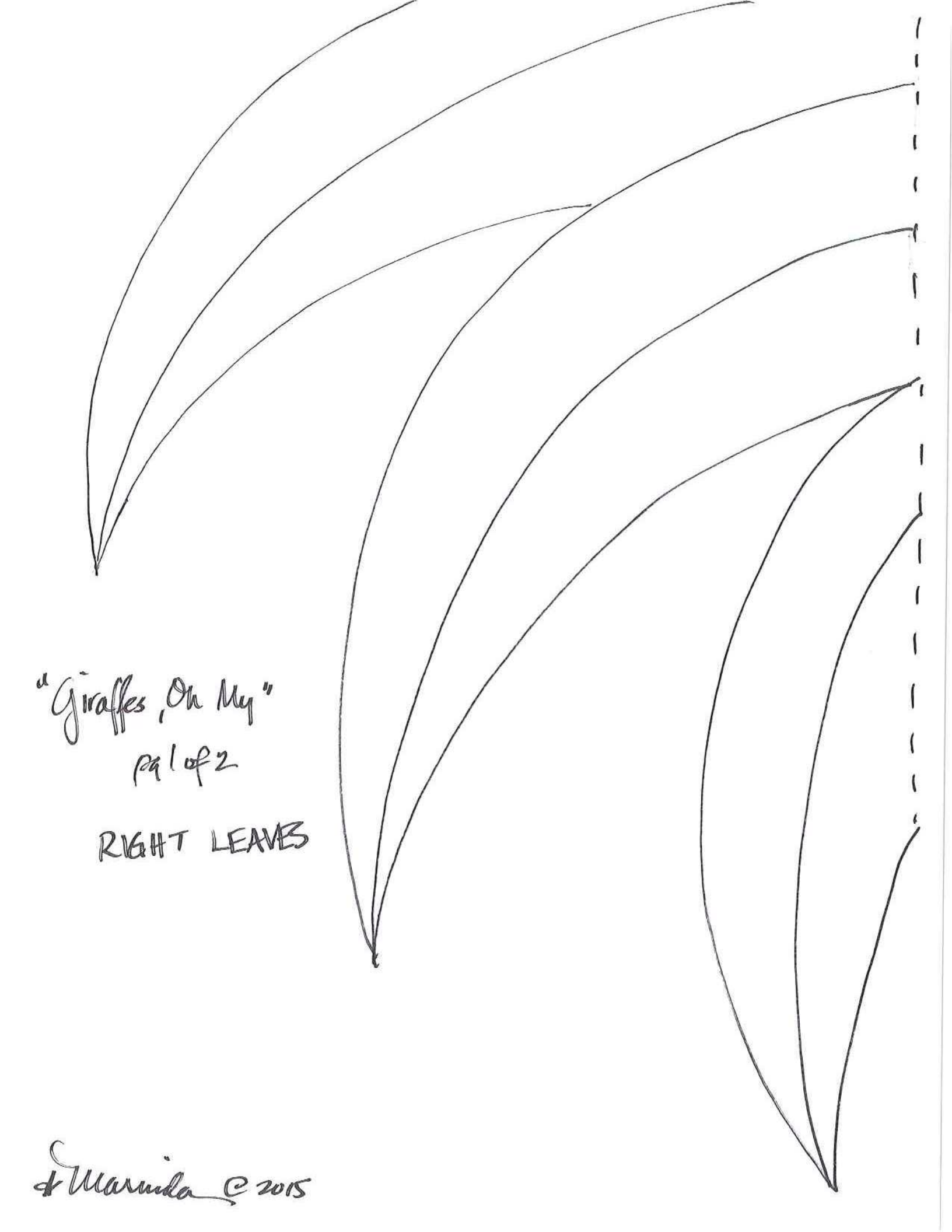
"giraffes, Dr. May"

SMALL
GIRAFFE

pg 2 of 2



*Merida © 2015

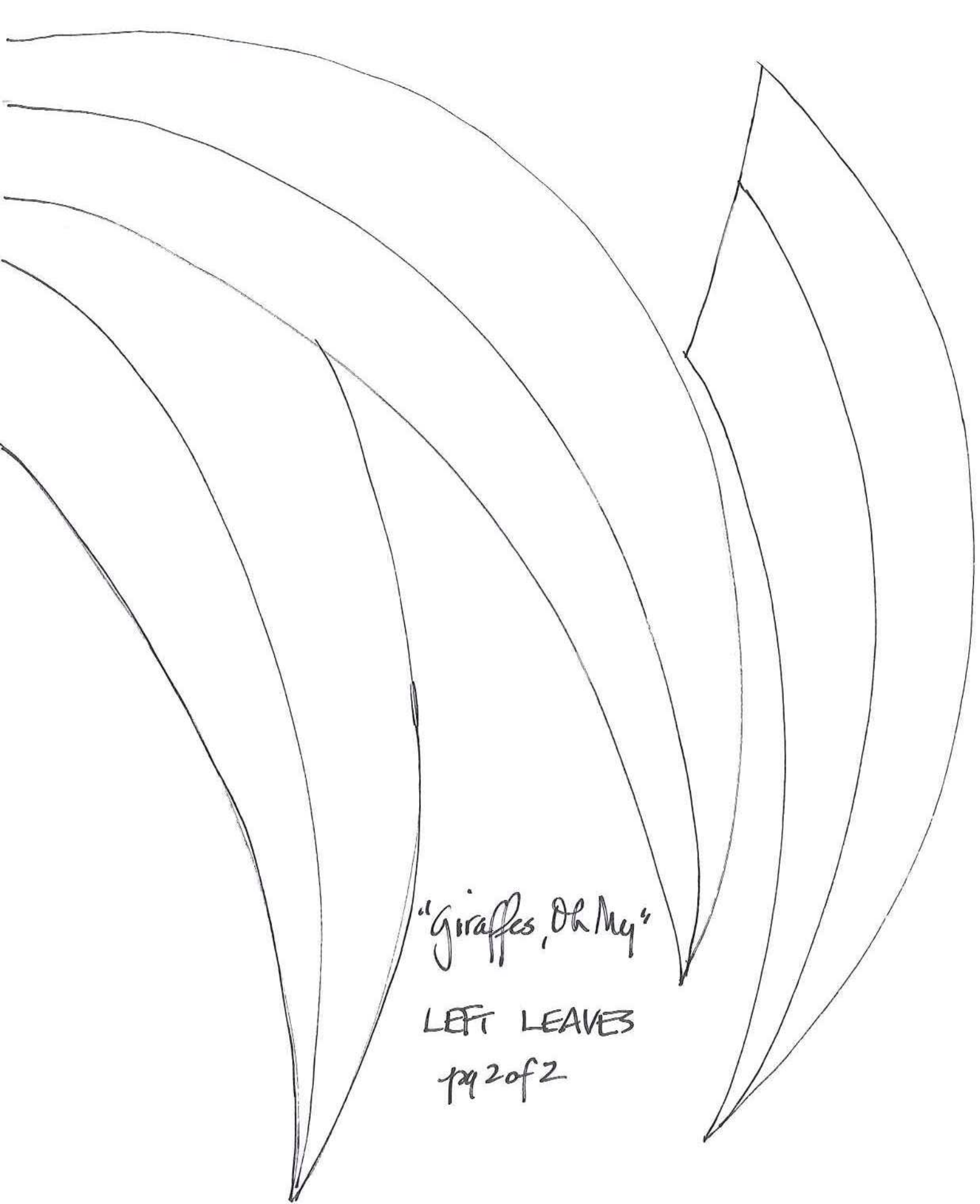
The image shows several hand-drawn outlines of leaves, arranged in two groups. The top group consists of three leaves of varying lengths, all curving downwards from a common point on the right. The bottom group consists of three leaves of varying lengths, also curving downwards from a common point on the right. A vertical dashed line is drawn on the right side of the page, indicating the spine of a book. The leaves are simple line drawings with no internal detail.

"Giraffes, Oh My"

pg 1 of 2

RIGHT LEAVES

© Marinda © 2015



"Giraffes, Oh My"

LEFT LEAVES

pg 2 of 2

* Mariana © 2015