

# Whisper

**BONUS  
PILLOWCASE &  
BED RUFFLE  
PATTERNS  
INCLUDED**

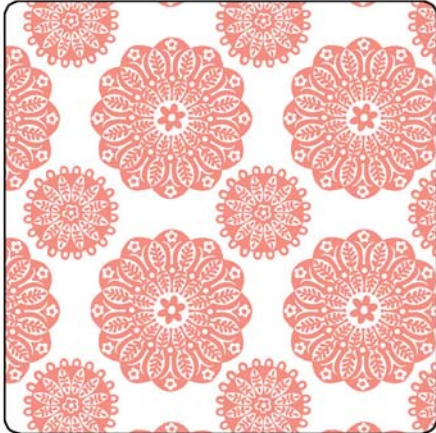


Level: Advanced Beginner | Quilt Size: 103" W x 103" H | Designs by Heidi Pridemore

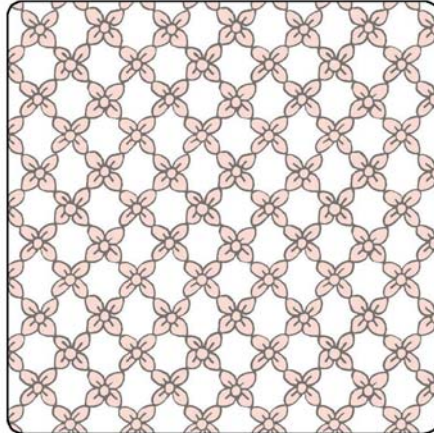


# Fabric Requirements

Quilt Backing & Batting: 111" x 111"



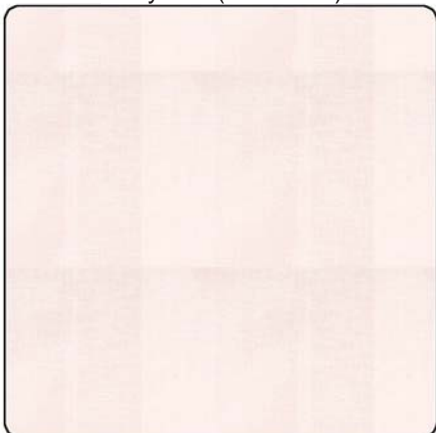
PC6696-Terra Cotta\*  
3 1/2 yards (42" wide) or  
1 3/4 yards (108" wide)



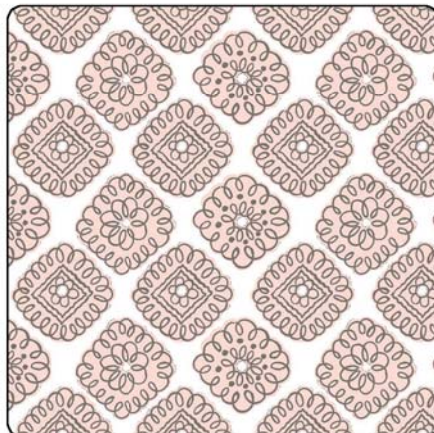
PC6695-Confection  
1 yard



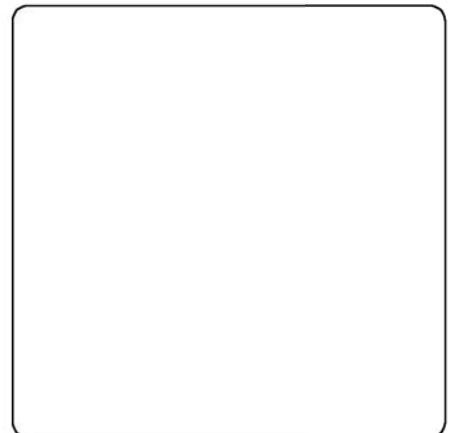
PC6693-Terra Cotta  
6 1/8 yards



SC5333-Confection  
1 1/4 yards



PC6697-Confection  
6 yards



SC5333-White  
2 yards



PC6694-Terra Cotta\*  
10 yards

\* Fabric is available in both 42" wide and 108" wide fabric.

## "Whisper Bed Set"

Quilt by Heidi Pridemore

Quilt Size: Approximately 103" x 103" Skill Level: Advanced Beginner

Bed Skirt Size: Queen

Neck Roll Pillow Size: Approximately 6" x 22"

Pillow Case Size: (2) Approximately 20" x 30"

### Materials

#### Cutting instructions

**Please Note: All strips are cut across the width of fabric (WOF) from selvage to selvage edge unless otherwise noted.**

	Fabric	Yardage	Cutting
(A)	PC6696-Terra Cotta Miriam – Terra Cotta	3 ½ yards (42" wide) or 1 ¾ yards* (108" wide)	<p><b>Quilt</b></p> <ul style="list-style-type: none"> <li>• Cut two 60 ½" x WOF strips. Sew the strips together and cut one 60 ½" square for the center square. (If using the 108" wide fabric, cut one 60 ½" square.)</li> </ul>
(B)	PC6695-Confection Melanie – Confection	1 yard	<p><b>Quilt</b></p> <ul style="list-style-type: none"> <li>• Cut four 3 ½" x WOF strips. Sew the strips together, end to end with diagonal seams, and cut two 3 ½" x 60 ½" strips.</li> <li>• Cut four 3 ½" x WOF strips. Sew the strips together, end to end with diagonal seams, and cut two 3 ½" x 66 ½" strips.</li> </ul> <p><b>Neck Roll Pillow</b></p> <ul style="list-style-type: none"> <li>• Cut one 2 ½" x WOF strip. Sub-cut the strip into two 2 ½" x 20" strips.</li> </ul>
(C)	PC6693-Terra Cotta Maxine – Terra Cotta	6 ⅛ yards	<p><b>Quilt</b></p> <ul style="list-style-type: none"> <li>• Cut four 19" x 110" strips from the length of fabric (LOF).</li> </ul>
(D)	SC5333-Confection Cotton Couture – Confection	1 ¼ yards	<p><b>Quilt</b></p> <ul style="list-style-type: none"> <li>• Cut eleven 2 ½" x WOF strips for the binding.</li> </ul> <p><b>Neck Roll Pillow</b></p> <ul style="list-style-type: none"> <li>• Cut one 1 ½" x WOF strip. Sub-cut the strip into two 1 ½" x 20" strips.</li> <li>• Cut two 6 ½" diameter circles.</li> </ul>
(E)	PC6697-Confection Maybelle – Confection	6 yards	<p><b>Bed Skirt</b></p> <ul style="list-style-type: none"> <li>• Cut two 21" x 105" LOF strips for the long sides.</li> <li>• Cut two 21" x 85" LOF strip for short sides. Sub-cut the strip into two 21" x 42 ½" strips.</li> </ul> <p><b>Pillow Cases</b></p> <ul style="list-style-type: none"> <li>• Cut two 10" x 41" strips.</li> </ul>
(F)	SC5333-White Cotton Couture – White	2 yards	<p><b>Pillow Cases</b></p> <ul style="list-style-type: none"> <li>• Cut two 26 ½" x 41" strips.</li> </ul>
(G)**	PC6694-Terra Cotta Mara – Terra Cotta	10 yards	<p><b>Quilt</b></p> <ul style="list-style-type: none"> <li>• Cut three 111" x WOF strips. Sew the strips together and trim to 111" x 111" for the back.</li> </ul> <p><b>Pillow Cases</b></p> <ul style="list-style-type: none"> <li>• Cut one 16 ½" x 20" strip</li> </ul> <p><b>Neck Roll Pillow</b></p> <ul style="list-style-type: none"> <li>• Cut one 10 ½" x 20" strip.</li> </ul>

\* Fabric is available in both 42" wide and 108" wide fabric. Follow cutting instructions for your fabric width choice.

\*\*Includes backing for the quilt.

#### You will also need:

- 111" x 111" batting, threads to match, scissors, straight pins, acrylic ruler, rotary cutter and mat.
- Polyfil
- White Sew-on Velcro

## Disclaimers

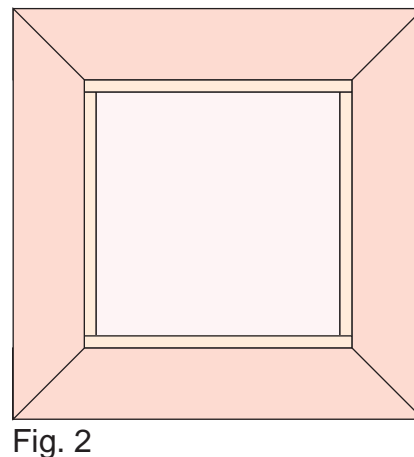
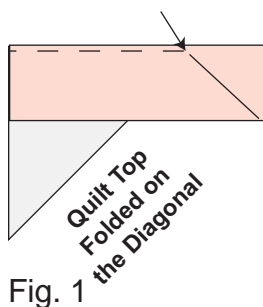
This pattern is provided as a courtesy to quilt stores, catalogs and quilters. Michael Miller Fabrics, LLC is not responsible for the accuracy of any kits packaged to accompany this pattern. Please direct any inquiries to the kit maker.

Yardage requirements for this pattern may allow for excess yardage to accommodate specific placement of motifs or to allow for any fussy-cutting to achieve the finished quilt design.

While every attempt has been made to give accurate measurements, yardage requirements and construction directions; this does not allow personal variations in measuring, cutting or sewing. The enclosed directions were used in the construction of the original quilt.

## Quilt Assembly

1. Sew one 3 ½" x 60 ½" Fabric B strip to each side of the 60 ½" Fabric A square. Sew one 3 ½" x 66 ½" Fabric B strip to the top and to the bottom of the Fabric A square to make the quilt top.
2. Center one 19" x 110" Fabric C strip on one side of the quilt top and pin in place. Start sewing the strip a ¼" from the top edge of the quilt top and stop a ¼" from the bottom edge. **DO NOT TRIM THE EXCESS.** Repeat with the opposite side.
3. Repeat Step 2 to sew one 19" x 110" Fabric C strip to the top and to the bottom of the quilt top, making sure to stop and start ¼" away from each end of the quilt top. To miter each corner, fold the quilt top on a diagonal, wrong side together. This should line up the strips from adjacent sides (Fig. 1).
4. Starting at the sewn seam (represented by the arrow in Figure 1), draw a 45-degree line to the edge of the fabric. Sew on the drawn line. Trim the excess fabric leaving a ¼" seam. Repeat this step with the remaining corners to finish the quilt top (Fig. 2).



5. Layer and quilt as desired.
6. Sew the eleven 2 ½" x WOF Fabric D strips together, end-to-end with 45-degree seams, to make the binding. Fold this long strip in half lengthwise with wrong sides together and press.
7. Bind as desired.

### Neck Roll Pillow Assembly

8. Sew one 2 ½" x 20" Fabric B strip, one 1 ½" x 20" Fabric D strip, one 16 ½" x 20" Fabric G strip, one 1 ½" x 20" Fabric D strip and one 2 ½" x 20" Fabric B strip together in this order, lengthwise, to make one strip set (Fig. 3).

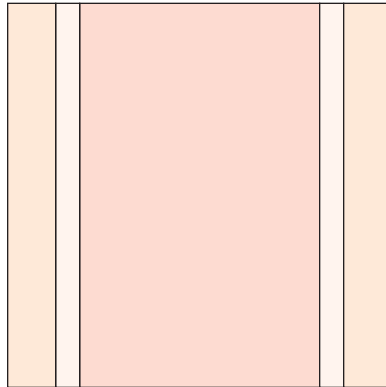


Fig. 3

9. Carefully pin the strip set along the Fabric B edge to one 6 ½" Fabric D circles, overlapping the ends a ¼" and mark. Using the mark as a guide trim the strip set to the correct length.
10. Fold the strip set in half, right sides together, along the sewn strips end and sew the ends together, leaving a 3" opening for turning to make a tube (Fig. 4).

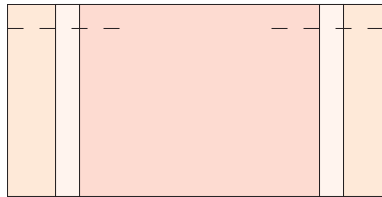


Fig. 4

11. Re-pin the Fabric B edge of the tube to one circle, right sides together. Carefully sew the tube to the circle. Repeat with the other end of the tube and the second circle.
12. Turn the pillow right side out through the opening in the side of the tube. Stuff the pillow with polyfil to desired fullness. Whip stitch the opening close to complete the pillow.

## Bed Skirt Assembly

13. Sew together the one 21" x 42 ½" Fabric E strip, one 21" x 105" Fabric E strip, one 21" x 85" Fabric E strip, one 21" x 105" Fabric E strip and one 21" x 42 ½" Fabric E strip, in the order listed to make one long strip.
14. Turn under one long edge ½" and a second ½" and press, topstitch the folded edge to create a finished edge. This will be the bottom edge of the bed skirt.
15. Fold over the top edge ½" and then ¾" and press. **DO NOT STITCH.**
16. To make the pleats at the center of each side and at the corners, measure and mark the center of each side and the corners, using your box spring measurements as a guide, starting at the middle of top end (pillow end) of the box spring.
17. Measure 6" out from one center point and mark (Fig. 5). Fold the 6" mark over to match the center mark on the right side of the fabric and pin in place (Fig. 6). Repeat with the other 6" mark on the opposite side of the center mark to make the second half of the pleat (Fig. 7). Press the pleat and pin or baste in place.

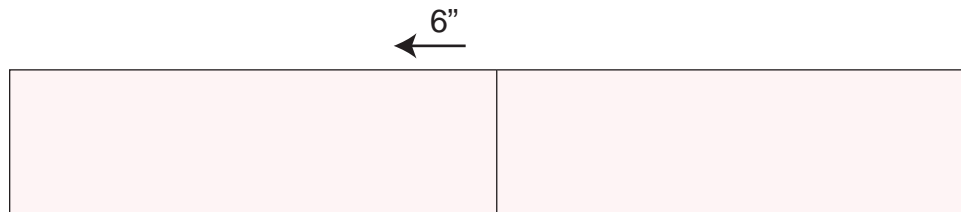


Fig. 5

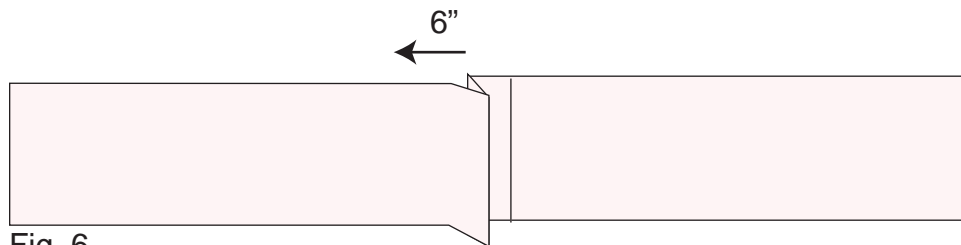


Fig. 6

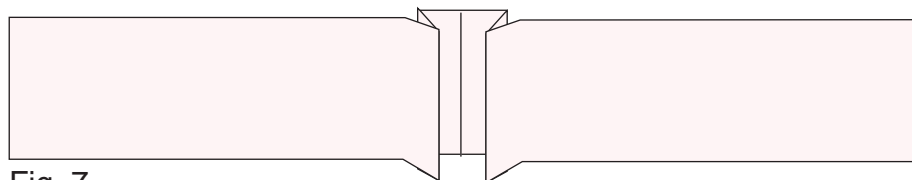


Fig. 7

18. Position and pin the soft half of the sewn-on Velcro to the top of the bed skirt on the wrong side of the fabric. Top stitch the Velcro in place making sure to stitch the pleats in place.
19. Staple or glue the second half of the Velcro to the bed box spring.
20. Starting at the top center of the box spring, attach the bed skirt to the bed with the Velcro.

## Pillow Cases Assembly

21. Place the 26 ½" x 41" Fabric F strip on top of the 10" x 41" Fabric E strip, right sides together along the 41" edge (Fig. 8).
22. Roll up the Fabric F strip up towards the top edge until it is about 2" from the top. The upper raw edges should still be aligned (Fig. 9).
23. Wrap the Fabric E strip around the rolled Fabric F fabric to form a tube. Pin the three raw edges together making sure the rolled fabric does not get caught in the pinned area (Fig. 10).



Fig. 8



Fig. 9

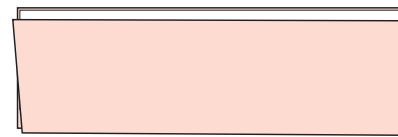


Fig. 10

24. Sew the pinned edges together with a ½" seam allowance.
25. Pull the rolled Fabric F fabric out from one side of the tube. This will also turn the pillowcase band right side out. Press the pillowcase band flat.
26. Fold the pillow case with band in half, right sides together aligning the raw edges of the band together and pin. Sew down the side of the pillowcase and across the bottom. Turn the pillowcase right side out.
27. Repeat Steps 21-26 to make a second pillowcase.