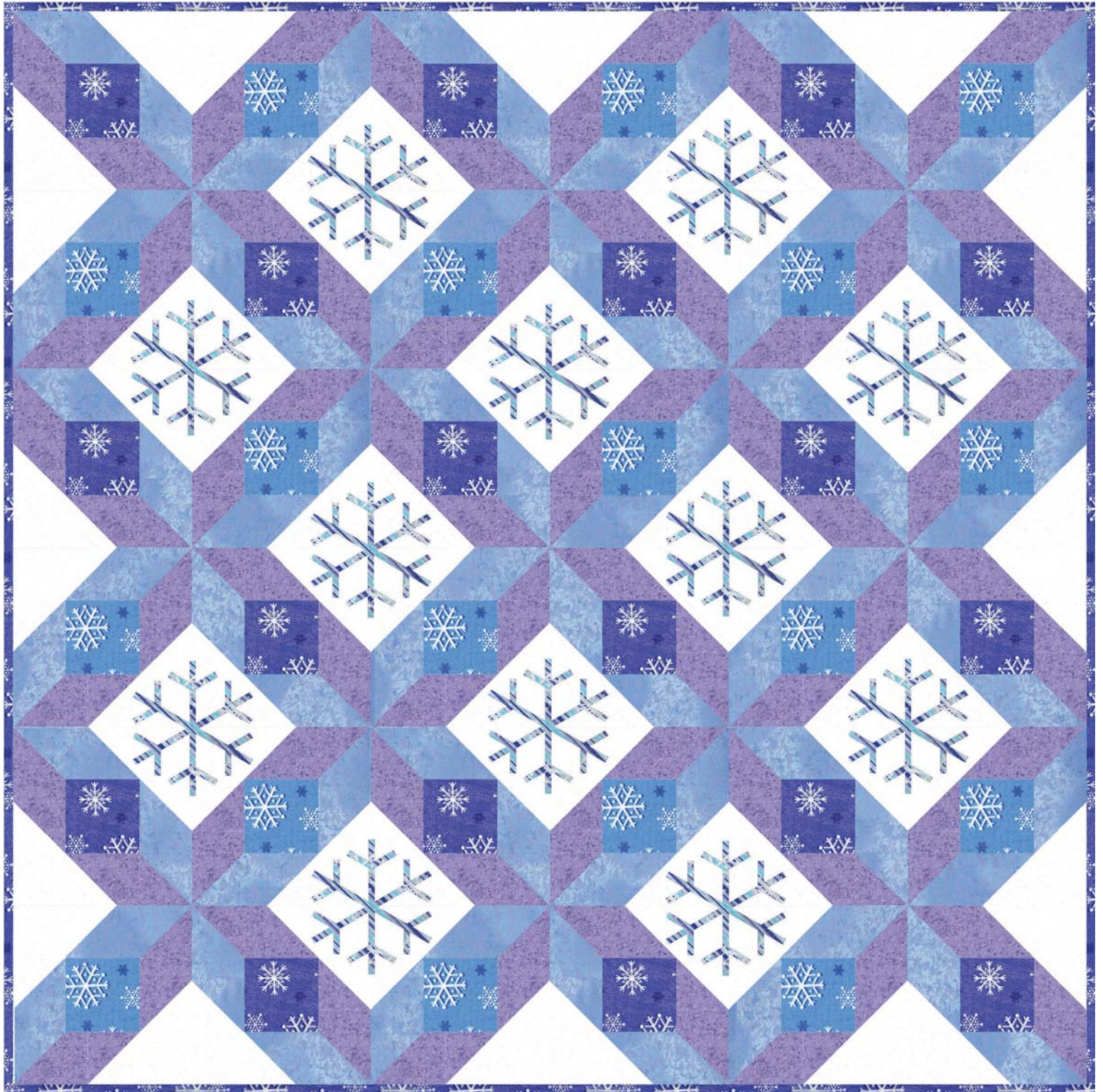


SNOWFALL



LEVEL: CONFIDENT BEGINNER | SIZE: 60" W X 60" H | QUILT DESIGNED BY SWIRLY GIRLS DESIGN

© Swirly Girls Design, Inc. Permission is granted to shop owners and teachers to make copies for promotional or educational purposes. This pattern may not be reproduced for commercial purposes.

FABRIC REQUIREMENTS



CM2049_BLUE
SNOWFLAKE STRIPE
3/4 YARD



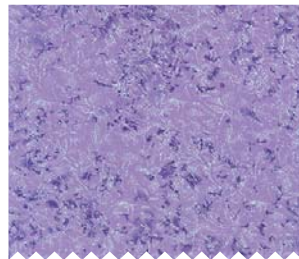
CM2050_AMETHYST
SNOWFALL
1/2 YARD



CM2050_BLUE
SNOWFALL
1/2 YARD



CM0376_PERI
FAIRY FROST
1 3/8 YARD



CM0376_FANCY
FAIRY FROST
1 3/8 YARD



CM0376_SNOW
FAIRY FROST
2 1/8 YARD (INC. BINDING)
4 YARDS BACKING

Snowfall

by Swirly Girls Design

60" x 60"

Cutting:

WOF = Width of Fabric

From CM2050 Amethyst & CM2050 Blue:

Cut [3] 4-1/2" x WOF strips; subcut [18] 4-1/2" squares of each

From CM0376 Fancy & CM0376 Peri:

Cut [8] 4" x WOF strips; subcut [72] 4" squares of each

Cut [3] 3-1/2" x WOF strips; subcut [72] 1-1/2" x 3-1/2" rectangles

From CM0376 Snow:

Cut [8] 4" x WOF strips; subcut [72] 4" squares and [6] 3-1/2" squares

Cut [6] 3-1/2" x WOF strips; subcut [66] 3-1/2" squares

Cut [7] 2-1/2" x WOF strips (binding)

From CM2049 Blue:

Cut [3] 7-1/2" x WOF strips; subcut [12] 7-1/2" squares (set aside for snowflake appliqués)

Piecing:

Half-Square Triangle Units:

Draw a diagonal line on the wrong side of [72] 4" CM0376 Snow squares. With right sides together, place a 4" CM0376 Snow square on top of a 4" CM0376 Fancy square. Stitch 1/4" on each side of drawn line.

Cut along drawn line and press toward CM0376 Fancy. Square up unit to measure 3-1/2" square.

Repeat with [35] additional 4" Snow squares to make a total of [72] Snow/Fancy half-square triangle units.

Use remaining 4" Snow squares to make [72] Snow/Peri half-square triangle units.

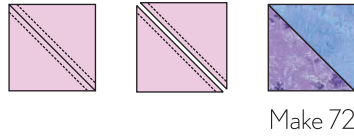


Make 72



Make 72

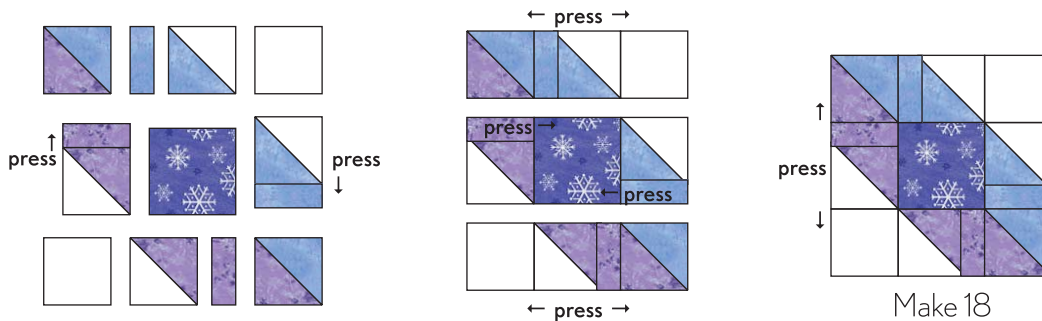
Draw a diagonal line on the wrong side of [36] remaining 4" CM0376 Fancy squares. With right sides together, place a 4" CM0376 Fancy square on top of a 4" CM0376 Peri square. Stitch 1/4" on each side of drawn line. Cut along drawn line and press toward CM0376 Fancy. Square up unit to measure 3-1/2" square. Repeat to make a total of [72] Fancy/Peri half-square triangle units.



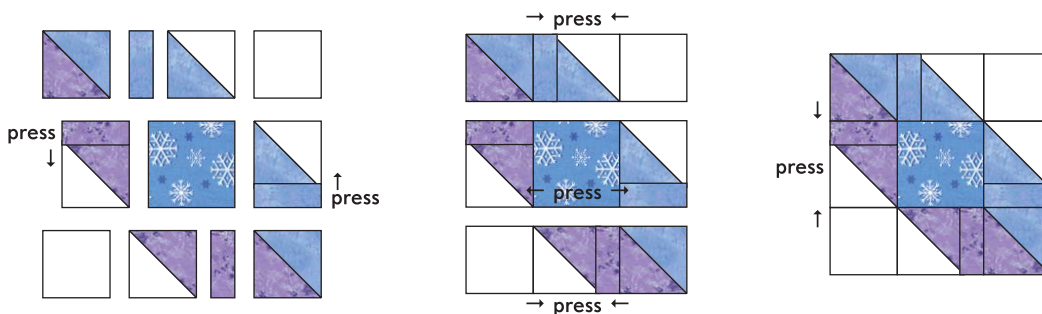
Block Assembly:

Arrange [1] 3-1/2" CM2050 Amethyst square; [2] Fancy/Peri half-square triangles; [2] Snow/Fancy half-square triangles; [2] Snow/Peri half-square triangles; [2] 1-1/2" x 3-1/2" Fancy rectangles; [2] 1-1/2" x 3-1/2" Peri rectangles and [2] 3-1/2" Snow squares as shown below.

Sew units into horizontal rows and press in the direction indicated. Note: On center row, sew 1-1/2" x 3-1/2" rectangles to half-square triangle units before sewing to center square. Sew horizontal rows together to complete block. Press as indicated by arrows. Repeat to make a total of [18].



Arrange remaining units as shown below. Sew units into horizontal rows and press in the direction indicated. Note: On center row, sew 1-1/2" x 3-1/2" rectangles to half-square triangle units before sewing to center square. Sew horizontal rows together to complete block. Press as indicated by arrows. Repeat to make a total of [18].

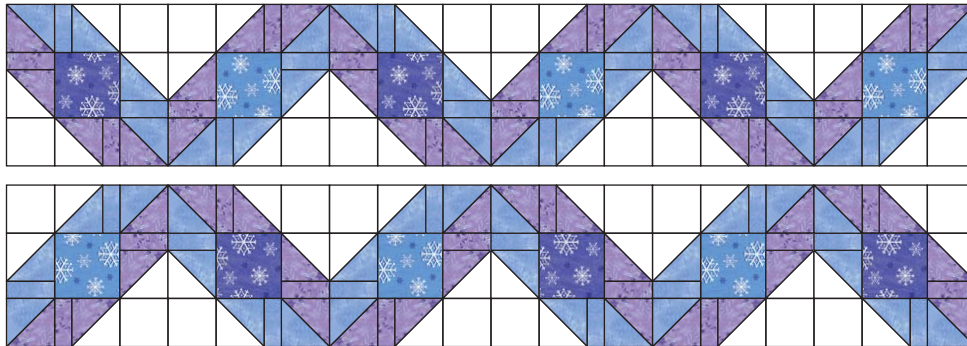


Prepare Appliqués:

Trace snowflake shape onto the paper side of the fusible web [12] times. DO NOT cut the traced snowflakes on the drawn line. Cut them apart at least 1/8" outside the lines. Lay a fusible web snowflake, paper side up, on the wrong side of a CM2049 Blue 7-1/2" square and press according to fusible web manufacturer's directions. Let fabric cool, then cut out snowflake shape on the drawn line. Make [12].

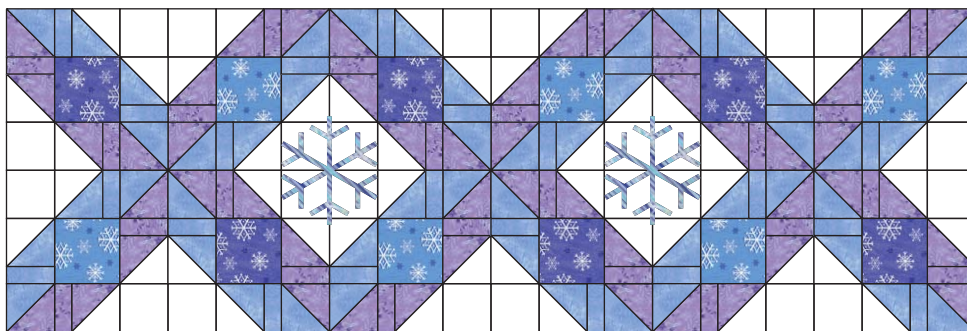
Quilt Top Assembly & Appliqué:

Arrange [12] blocks as shown below. Sew blocks into horizontal rows. Press seams open. Sew rows together. Press seams open. Repeat to make [3] sections with [2] rows of blocks.



Peel off paper from a snowflake shape and center appliqué on the pieced white square. Fuse to the pieced white square, following manufacturer's directions. Repeat in second pieced white square. Stitch the appliqués using the stitch of your choice. I used a blanket stitch. You may also use a zig zag or straight stitch.

Repeat on two remaining sections.

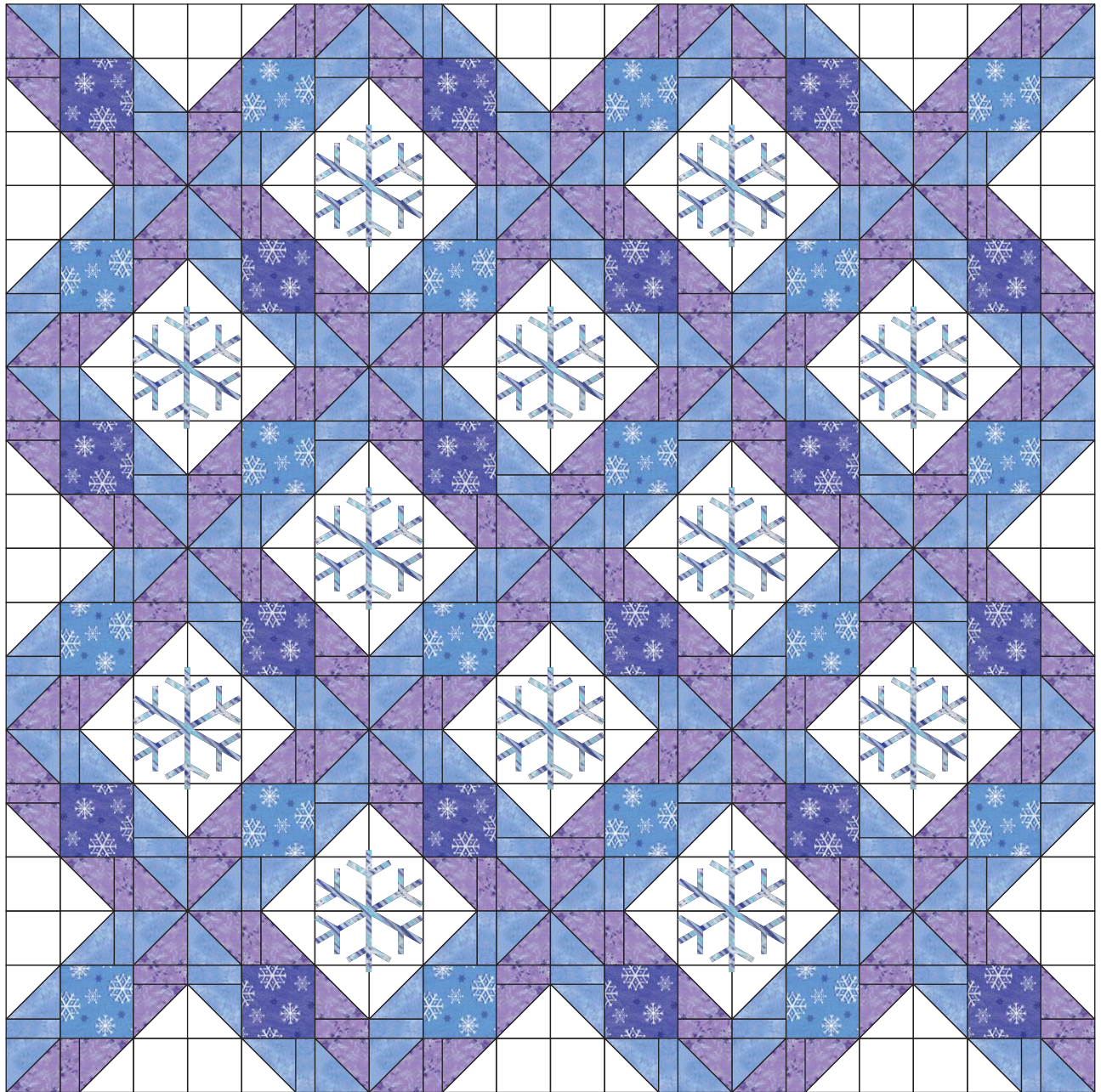


Make 3 Appliquéd Sections

Sew the three sections together as shown on next page.

Peel off paper from remaining snowflake shapes and center appliqués on the remaining [6] pieced white squares. Fuse to the pieced white squares, following manufacturer's directions. Stitch the appliqués using the stitch of your choice to complete quilt top.

Snowfall




Swirly Girls

www.swirlygirlsdesign.com

© Swirly Girls Design, Inc. Permission is granted to shop owners and teachers to make copies for promotional or educational purposes.
This pattern may not be reproduced for commercial purposes.

Snowfall

