

BLIZZARD



LEVEL: CONFIDENT BEGINNER | SIZE: 61" W X 61" H | QUILT DESIGNED BY SWIRLY GIRLS DESIGN

© Swirly Girls Design, Inc. Permission is granted to shop owners and teachers to make copies for promotional or educational purposes.
This pattern may not be reproduced for commercial purposes.

FABRIC REQUIREMENTS



CM2049_BLUE
SNOWFLAKE STRIPE
1 YARD



CM2050_AMETHYST
SNOWFALL
1 1/3 YARDS
4 YARDS (BACKING)



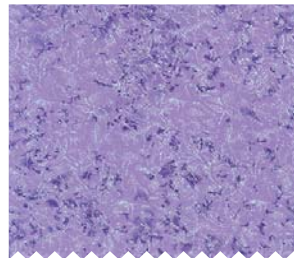
CM2050_BLIZZARD
SNOWFALL
1/3 YARD



CM0376_CROCUS
FAIRY FROST
3/8 YARD



CM0376_LUNA
FAIRY FROST
1 YARD



CM0376_FANCY
FAIRY FROST
5/8 YARD (BINDING)



CM0376_PLATINUM
FAIRY FROST
1/2 YARD



CM0376_SNOW
FAIRY FROST
1/2 YARD

Blizzard

by Swirly Girls Design

61" x 61"

Cutting:

WOF = Width of Fabric


From CM2049 Blue:

Cut [6] 5-1/2" x WOF strips; set aside for border

From CM2050 Amethyst:

Cut [1] 18-1/4" x WOF strip; subcut [2] 18-1/4" squares and cut twice diagonally  (side setting triangles)

Cut [1] 9-1/2" x WOF strip; subcut [2] 9-1/2" squares and cut once diagonally  (corner setting triangles)


Cut [3] 5-1/4" x WOF strips; subcut [18] 5-1/4" squares and cut twice diagonally 


From CM2050 Blizzard:

Cut [2] 4-1/2" x WOF strips; subcut [9] 4-1/2" squares

Cut remainder of second strip to 4-1/4"; subcut [4] 4-1/4" squares and cut twice diagonally 

From CM0376 Snow:

Cut [2] 5-1/4" x WOF strips; subcut [8] 5-1/4" squares and cut twice diagonally 

Cut remainder of second strip to 4-3/8"; subcut [7] 4-3/8" squares and cut once diagonally 

Cut [1] 4-3/8" x WOF strip; subcut [9] 4-3/8" squares and cut once diagonally 

From CM0376 Platinum:


Cut [2] 6-1/2" x WOF strips; subcut [56] 1-1/4" x 6-1/2" rectangles


Cut [1] 1-1/4" x WOF strip; subcut [8] 1-1/4" x 3-1/2" rectangles

From CM0376 Crocus:

Cut [2] 5-1/4" x WOF strips; subcut [13] 5-1/4" squares and cut twice diagonally 

From CM0376 Luna:

Cut [3] 5-1/4" x WOF strips; subcut [17] 5-1/4" squares and cut twice diagonally 

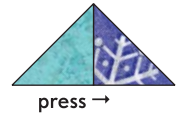
Cut [4] 4-3/8" x WOF strips; subcut [36] 4-3/8" squares and cut once diagonally 

From CM0376 Fancy:

Cut [7] 2-1/2" x WOF strips; set aside for binding

Piecing

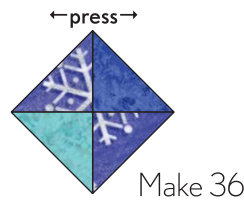
Sew a small Luna triangle to a small Amethyst triangle along the short side as shown. Press toward Amethyst triangle. Make 36.



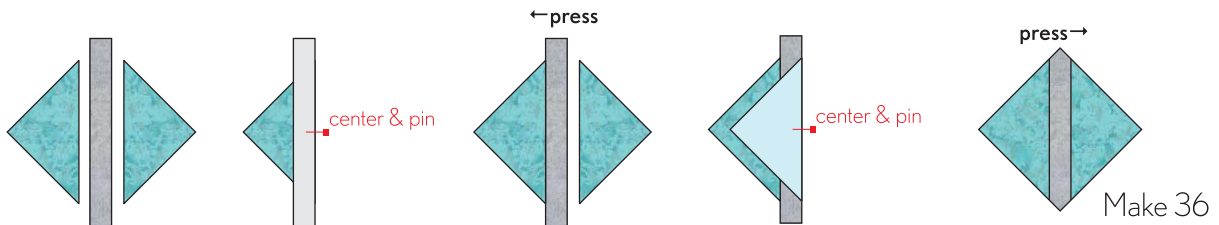
Sew a small Crocus triangle to a small Amethyst triangle along the short side as shown. Press toward Amethyst triangle. Make 36.



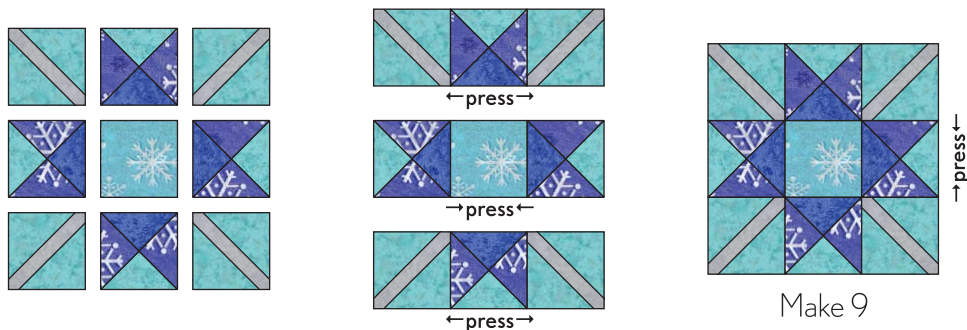
Sew units together as shown and press seam open. Repeat to make a total of [36] quarter-square triangles.



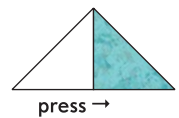
Arrange [2] large Luna triangles and [1] 1-1/4" x 6-1/2" Platinum rectangle as shown. Find the center of the Platinum rectangle and pin to the center of the left triangle. Sew together and press toward Luna triangle. Center remaining Luna triangle on the opposite side of Platinum rectangle and sew. Press toward Luna triangle. Trim overhanging Platinum rectangle so the unit measures 4-1/2". Make 36 corner units.



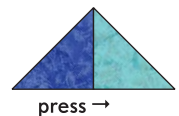
Arrange [4] quarter-square triangles; [4] corner units and [1] 4-1/2" Blizzard square as shown below. Sew units into horizontal rows and press as indicated. Sew rows together and press to complete block. Make 9.



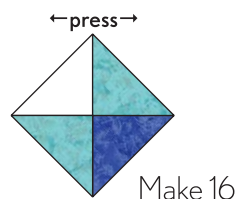
Sew a small Luna triangle to a small Snow triangle along the short side as shown. Press toward Luna triangle. Make 16.



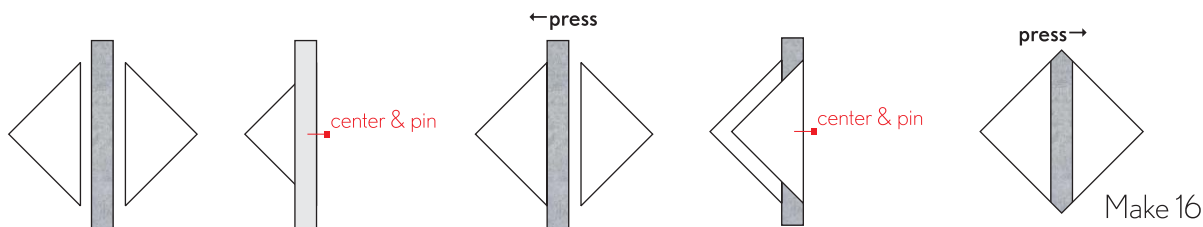
Sew a small Luna triangle to a small Amethyst triangle along the short side as shown. Press toward Luna triangle. Make 16.



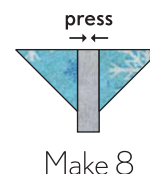
Sew units together as shown and press seam open. Repeat to make a total of [16] quarter-square triangles.



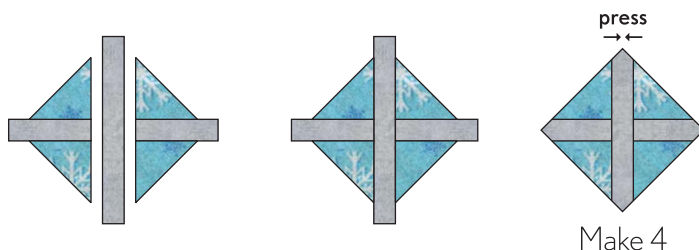
Arrange [2] large Snow triangles and [1] 1-1/4" x 6-1/2" Platinum rectangle as shown. Find the center of the Platinum rectangle and pin to the center of the left triangle. Sew together and press toward Snow triangle. Center remaining Snow triangle on the opposite side of Platinum rectangle and sew. Press toward Snow triangle. Trim overhanging Platinum rectangle so the unit measures 4-1/2". Make 16 corner units.



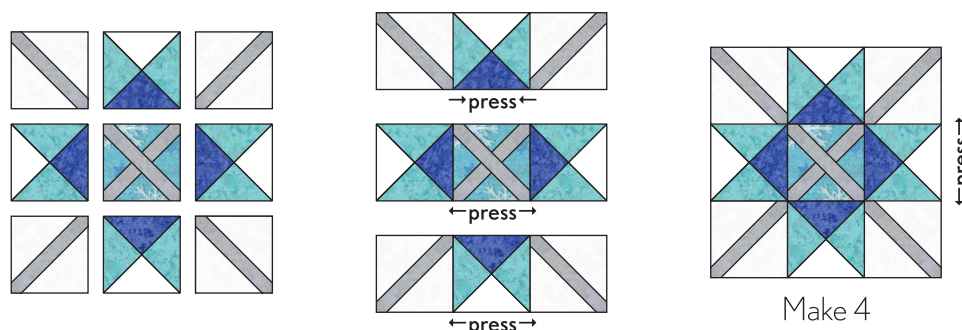
Arrange [2] Blizzard triangles and [1] 1-1/4" x 3-1/2" Platinum rectangle as shown. Sew together, aligning the top edges and press toward Platinum rectangle. Make 8.



Arrange [2] pieced units and [1] 1-1/4" x 6-1/2" Platinum rectangle as shown below. Find the center of the large Platinum rectangle and pin to the center of the left unit. Sew together and press toward large platinum rectangle. Center remaining pieced unit on the opposite side of large Platinum rectangle and sew. Press toward large Platinum rectangle. Trim overhanging Platinum rectangles so the unit measures 4-1/2". Make 4 center blocks.



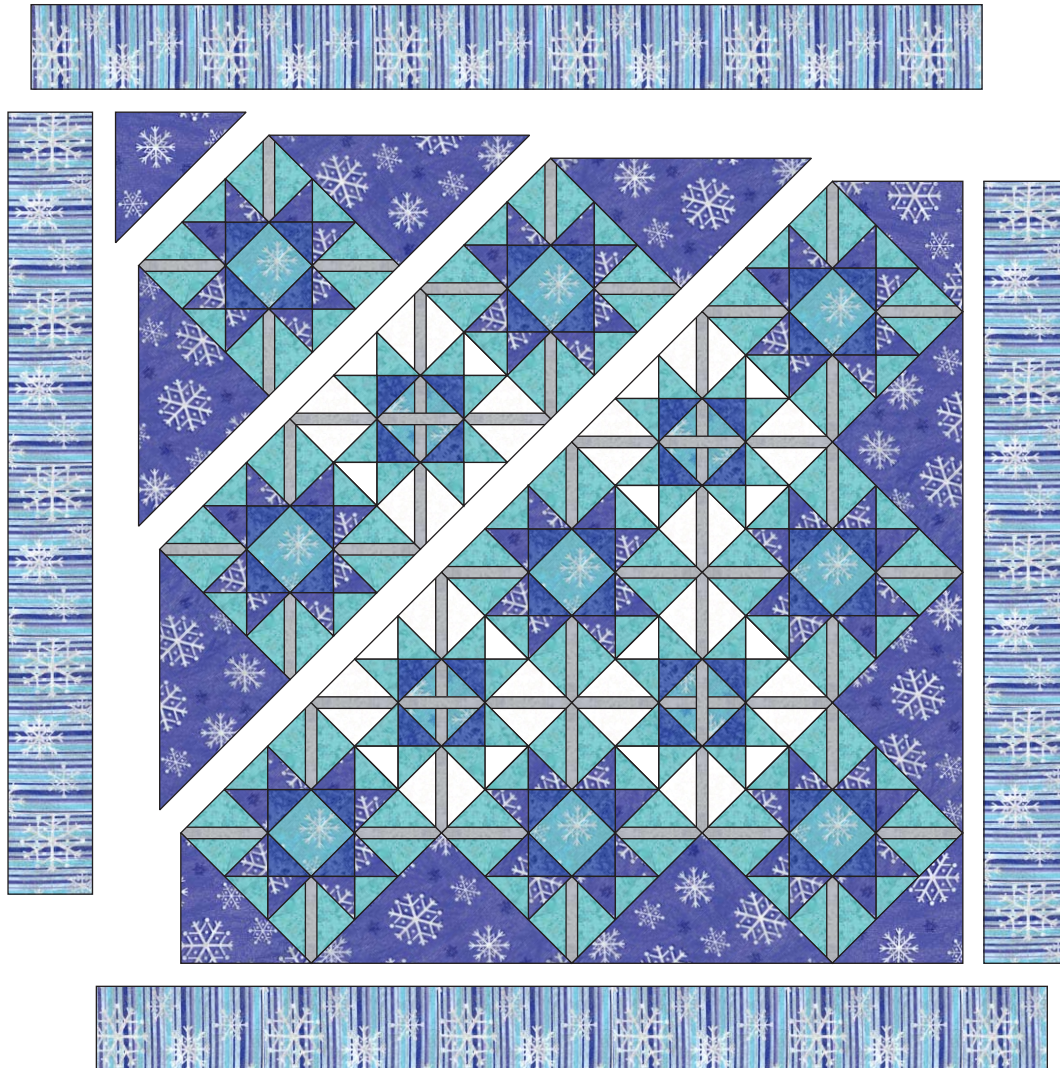
Arrange [4] quarter-square triangles; [4] corner units and [1] center square as shown below. Sew units into horizontal rows and press as indicated. Sew rows together and press to complete block. Make 4.



Snowfall

Arrange blocks and setting triangles as shown below. Sew into diagonal rows and press seams open. Sew rows together to complete quilt center.

Sew 5-1/2" CM2049 Blue border strips together end to end. Cut [2] strips 51-1/2" long and sew to sides of quilt center. Press toward border. Cut [2] strips 61-1/2" long and sew to top and bottom of quilt center. Press toward border to complete quilt top.



www.swirlygirlsdesign.com

© Swirly Girls Design, Inc. Permission is granted to shop owners and teachers to make copies for promotional or educational purposes. This pattern may not be reproduced for commercial purposes.