

USES PRE-CUTS

RED & WHITE



FABRIC REQUIREMENTS



SQUARE030 PRE-CUTS:
(10"x10") 1 PACK

AVAILABLE RED & WHITE PRE-CUTS:

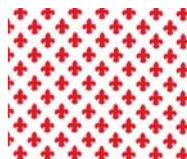
FQ082 –(25) Fat Quarter Bundle – 3pc/carton
 CHARM045 –(42) Charm Pack 5"x5" – 12pc /carton
 SQUARE030 –(42) Square Pack 10"x10" – 12pc/carton
 ROLL033 –(40) Roll 2 ½ x44" – 6pc/carton

BINDING AND BORDER: 2 yards of CX5946 Stitch Circle / Minnie
BACKGROUND: 2-1/8 yards of SC5333 Cotton Couture / Bright White
BACKING: 4-1/2 yards of CX2490 Dumb Dot / Peppermint (optional)
SQUARES: 1 pack of CHARM045 - 42 pieces

PACKS INCLUDE THE BELOW PRINTS:



CX6557 RED
PETITE DANDY DAMASK



CX6556 ROUGE
PETITE FLEUR DE LIS



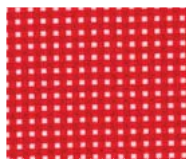
CX2504 RED
ZILLION HEARTS



CX3584 RED
CLOWN STRIPE



CX2507 RED
DAISY FLOWER



CX4834 CHERRY
TINY GINGHAM



CX6555 RED
PETITE HEARTS



CX5514 RED
PINHEAD



CX5920 RED
HEARTS ALL OVER



CX6554 ROUGE
PETITE PARIS



CX6556 RED
PETITE FLEUR DE LIS



CX5946 MINNIE
STITCH CIRCLE



CX5946 PEPPERMINT
STITCH CIRCLE



CX6293 RED
TINY GUITAR PICKS



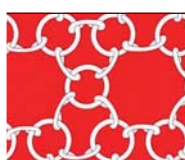
CX6358 RED
TINY TRUCKS



CX6555 ROUGE
PETITE HEARTS



DC6034 RED
WICKER



DC6035 RED
CHAIN LINK



DC6395 RED
CROSSING PATHS



PC6325 RED
PET PAWS



PC6326 RED
BONE TO PICK

Red & White

60" x 72"


Cutting:


WOF = Width of Fabric

From Red & White Pre-Cut 5" Charms:

Cut [40] charms to 4-3/4" square

From SC5333_Bright White:

Cut [4] 13-1/2" x WOF strips; subcut [10] 13-1/2" squares and cut TWICE diagonally 

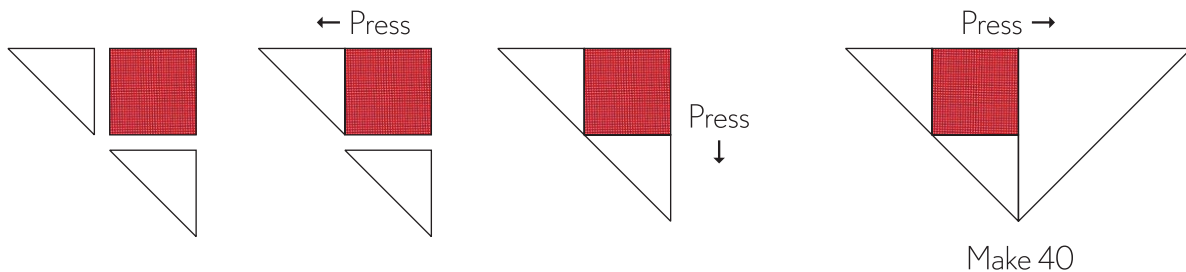
Cut [6] 5-1/4" x WOF strips; subcut [40] 5-1/4" squares and cut ONCE diagonally 

From CX5946_Minnie Stitch Circle:

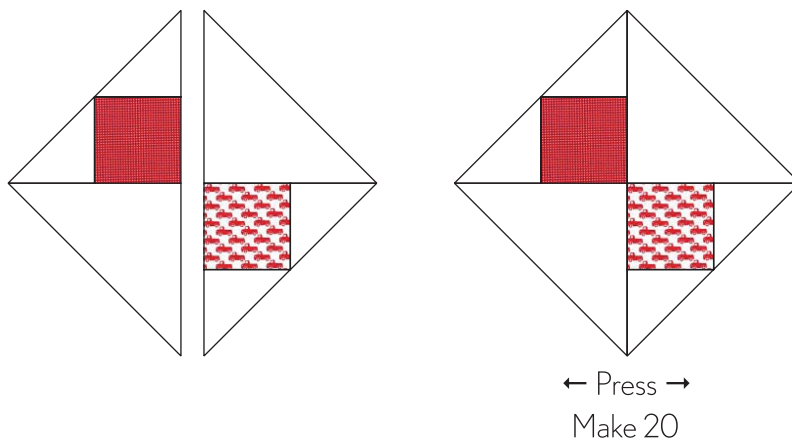
Cut yardage to 60-1/2" long; then from LENGTH cut [4] 6-1/2" x 60-1/2" strips (borders) and [5] 2-1/2" x 60-1/2" strips (binding)

Piecing:

Arrange [2] small white triangles and [1] 4-3/4" print square as shown below. Sew a white triangle to the left side of print square. Press toward white triangle. Sew remaining white triangle to bottom of print square and press toward white triangle. Sew a large white triangle to the right side of unit. Press toward triangle. Repeat with remaining print squares to complete [40] units.



Choose [2] units and sew together as shown. Press seam open to complete block. Make 20.



Arrange blocks as shown below, turning alternating blocks 90°. Sew together into horizontal rows. Press toward large white triangles. Sew rows together to complete quilt center.

Sew a 6-1/2" x 60-1/2" border strip to each side of quilt center. Press toward borders.

Sew a 6-1/2" x 60-1/2" border strip to top and bottom of quilt center. Press toward borders to complete quilt top.

