

tamarakATE
ORIGAMIOASIS
grassland quilt



Grassland Quilt

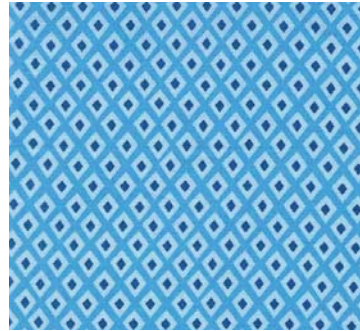
Fabric Requirements



DC6394 NAVY
PRIDE
1/2 yard



DC6407 BLUEBERRY
OASIS BORDER
1/2 yard



DC6406 BLUE
SPOT
1/2 yard



DC6399 BLUE
FOLD
1/2 yard



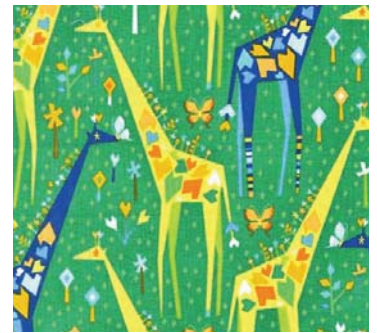
DC6398 BLUE
SHOW YOUR COLORS
1/2 yard



DC6400 NAVY
MOUNTAIN AND VALLEY
1/2 yard



DC6394 PRIMARY
PRIDE
1/2 yard



DC6397 GRASS
STAND TALL
1/2 yard



DC6395 LIME
CROSSING PATHS
1/2 yard



DC6399 STARFRUIT
FOLD
1/2 yard



DC6406 STARFRUIT
SPOT
1/2 yard



DC6406 CITRUS
SPOT
1/2 yard



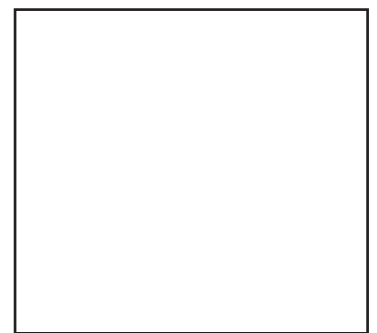
DC6399 CLEMENTINE
FOLD
1/2 yard



DC6401 PRIMARY
FLORET
1 1/4 yard



DC6395 LIME
CROSSING PATHS
1/4" WIDE BINDING: 1/2 yard
OR 1" WIDE BINDING: 1 1/4 yard



BACKING FABRIC: 56" x 72"
OF YOUR CHOICE

Grassland Quilt

Finished Quilt Size: 56" x 72" Skill Level: Beginner

Cutting Instructions:

- **Piece A** - First 13 fabrics listed above: Cut an average of 10 rectangles (6½" high x 4½" wide) of each fabric, fussy cutting as desired. (I used between 8 and 13, depending on the print). You will need 126 pieces in total.

- **Piece B** - DC6401- Floret: Cut 14 strips 2½" x width of fabric (WOF), being sure to center 2 rows of flowers in each row, as below. Sub-cut the strips into 4½" wide rectangles, resulting in 126 rectangles (2½" high x 4½" wide).



- **Binding:** For ¼" Binding: Cut 7 strips 2½" x WOF. **OR** For 1" Binding: Cut 7 strips 6" x WOF.

Also Needed:

- 56" x 72" quilt batting.

- A rotary cutter, acrylic ruler and cutting mat, thread, scissors, pins.

Piecing Quilt Top:

- All seams are ¼"

- Make sure all pieces will lie with printed pattern facing the same direction when piecing.

Using the finished quilt photo as a reference, lay out Pieces **A** in 14 vertical rows of 9 pieces, to show a gradual movement of color, starting with reds/oranges in the bottom left corner, through to darkest blues in the top right, with white-background fabrics interspersed throughout.

Follow Quilt Piecing Diagram: With right sides together, lay a piece **B** upside-down at the top of the first piece **A** of the first row. Sew along top edge. Continue in this fashion to form long rows, alternating pieces **A** and **B**, so that you have 14 rows, each containing 9 pieces **A** and 9 pieces **B**. Seven of these rows should start with a piece **B** and seven should start with a piece **A**.

Press all seams away from pieces **B**.

Pin these rows together in the right sequence and stitch. Press seams open.

Assembling Quilt:

Square up quilt top. Layer backing, batting and quilt top. Baste or pin. Quilt as desired.

Join binding strips together, end to end, randomly interspersing small pieces of first 13 fabrics if desired.

Bind in your preferred fashion for ¼" binding.

For 1" binding, use the same method, but with a 1" seam when attaching the binding to the quilt, stopping 1" before the end of the quilt to mitre corners.

Grassland Quilt

Quilt Piecing Diagram

