

PEPPY PETALS



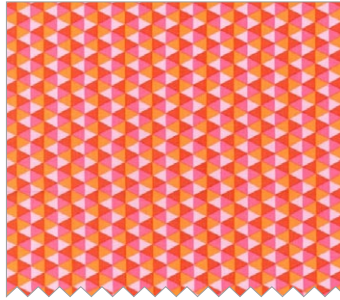
LEVEL: CONFIDENT BEGINNER | SIZE: 40" W X 55" H | QUILT DESIGNED BY MARINDA STEWART

FABRIC REQUIREMENTS

46" X 60" BACKING, 46" X 60" BATTING



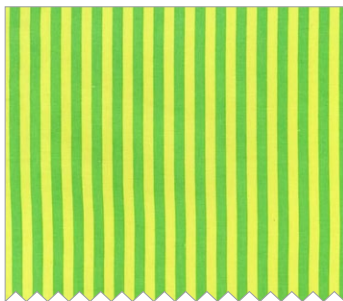
CX6353 White
Peppy Petals
3/4 yard



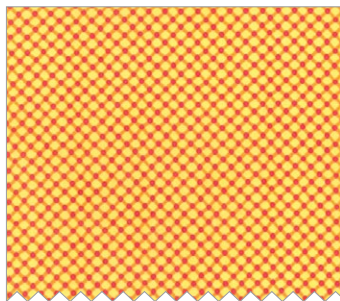
CX5916 Watermelon
Polygon
1/2 yard



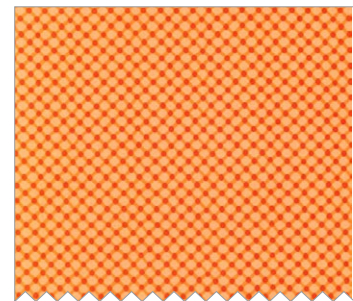
SC5333 Bright White
Cotton Couture
3/4 yard



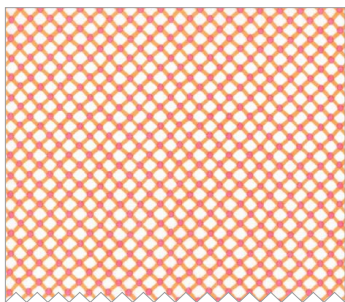
CX3584 Mint
Clown Stripe
1/8 yard



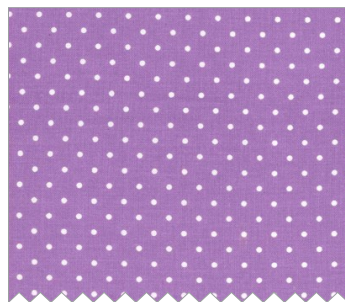
CX5911 Sunshine
Cora
1/8 yard



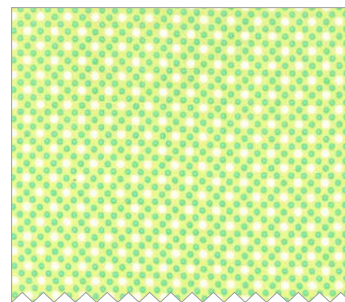
CX5911 Orange
Cora
10" x 10" piece



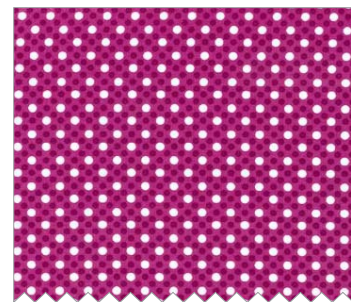
CX5911 Sorbet
Cora
3" x 3" piece



CX5514 Purple
Pinhead
1/8 yard



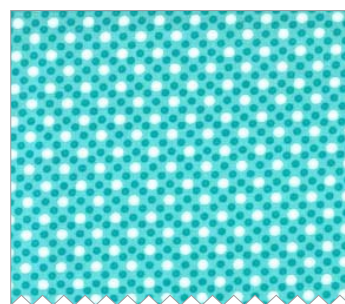
CX6322 Limeade
Dim Dots
1/8 yard



CX6322 Jewel
Dim Dots
1/4 yard



CX6322 Aqua
Dim Dots
1/4 yard



CX6322 Turquoise
Dim Dots
1/4 yard



CX5958 Citron
Park Slope
Fat 1/8



CX5958 Jewel
Park Slope
Fat 1/8

"Petty Petals"
Quilt by Marinda Stewart

Size: Approximately 40" x 55" Skill Level : Confident Beginner

Materials

Fabric	Yardage	Cutting
CX6353 White Peppy Petals	3/4 yard	(2) 5 1/2" x 38 1/2" (2) 5 1/2" x 33 1/2" (3) fussy-cut flowers
CX5916 Watermelon Polygon	1/2 yard	(2) 1" x 22 1/2" (2) 1" x 38 1/2" (5) 2 1/2" x W.O.F. -binding
SC5333 Bright White Cotton Couture	3/4 yard	(1) 22 1/2" x 37 1/2"
CX3584 Mint Clown Stripe	1/8 yard	(2) 1" x 33 1/2" (2) 1" x 49 1/2" *
CX5911 Sunshine Cora	1/8 yard	(2) 3 1/2" x 13 1/4" (1) 3 1/2" x 6" (1) 3 1/2" x 7 3/4"
CX5911 Orange Cora	10" x 10" piece	(1) flower (see pattern)
CX5911 Sorbet Cora	3" x 3" piece	(2) flower centers (see pattern)
CX5514 Purple Pinhead	1/8 yard	(2) 3 1/2" x 3" (1) 3 1/2" x 7 1/4" (1) 3 1/2" x 6" (1) flower center (see pattern)
CX6322 Limeade Dim Dots	1/8 yard	(2) 3 1/2" x 9 3/4" (1) 3 1/2" x 4" (1) 3 1/2" x 5 1/2" (1) flower center (see pattern)
CX6322 Jewel Dim Dots	1/4 yard	(2) 3 1/2" x 5" (2) 3 1/2" x 8 1/4" (7) large petals (see pattern)
CX6322 Aqua Dim Dots	1/4 yard	(2) 3 1/2" x 5" (2) 3 1/2" x 9 1/4" (7) small petals (see pattern)
CX6322 Turquoise Dim Dots	1/4 yard	(2) 3 1/2" x 4 1/4" (2) 3 1/2" x 10 1/4" (4) small petals (see pattern) (1) 1/4 flower center (see pattern)
CX5958 Citron Park Slope	Fat 1/8	(4) 3 1/2" x 2" (1) 1/4 flower center (see pattern)
CX5958 Jewel Park Slope	Fat 1/8	(6) 3 1/2" x 2" (1) flower center (see pattern)

Also Needed: 45" x 60" backing, 45" x 60" batting, threads to match scissors, straight pins, rotary cutter, acrylic ruler, mat, (1) skein 6-strand cotton embroidery floss - Navy Blue, (1) embroidery or crewel hand-sewing needle, water soluble fabric marker, and fusible web.
OPTIONAL (but recommended): iron-on tear-away stabilizer

* Pieced for length

Disclaimers

This pattern is provided as a courtesy to quilt stores, catalogs, and quilters. Michael Miller Fabrics, LLC is not responsible for the accuracy of any kits packaged to accompany this pattern. Please direct any inquiries to the kit maker.

Yardage requirements for this pattern may allow for excess yardage to accommodate specific placement of motifs or to allow for any fussy-cutting to achieve the finished quilt design.

While every attempt has been made to give accurate measurements, yardage requirements, and construction directions; this does not allow personal variations in measuring, cutting, and or sewing. The enclosed directions were used in the construction of the original quilt.

Directions:

1. Following manufacturer's directions, trace pattern pieces onto the paper side of the fusible web. Rough cut out each piece. Iron each pattern piece on the wrong side of each designated fabric on the pattern pieces. Cut out each piece on the pattern lines.
2. Arrange pattern pieces as shown on SC5333 22 1/2" x 37 1/2" piece. Remove paper backing and iron each pattern piece in place as shown. Iron fusible web onto the back of each of the three CX6353 flowers. Cut out. Remove paper and fuse in place as shown. Machine satin stitch all raw edges to finish using matching threads.
3. Sew one CX5916 1" x 22 1/2" piece to the top and bottom of the SC5333 panel. Sew one CX5916 1" x 38 1/2" piece to each side.
4. Sew one CX6353 5 1/2" x 33 1/2" piece to each side of the quilt. Sew one CX6353 5 1/2" x 33 1/2" piece to the top and bottom.
5. Sew one CX3584 1" x 33 1/2" piece to the top and bottom of the quilt. Sew one CX3584 1" x 49 1/2" piece (pieced for length) to each side.
6. Refer to the photo for suggested placement - sew together assorted 3 1/2" border pieces to make (2) 3 1/2" x 34 1/2" pieces. Sew one to the top and bottom of the quilt. Piece together the remaining 3 1/2" pieces to make (2) 3 1/2" x 55 1/2" pieces. Sew one strip to each side.
7. Layer backing, batting, and quilt top. Baste.
8. Quilt as desired.
9. Using the water soluble pen, free hand draw vines and leaves onto the background of SC5333 as shown.
10. Using 3 strands separated out from the 6-strand cotton embroidery floss in the embroidery (or crewel) needle stitch the drawn lines using a running stitch. Stitch through all layers of the quilt as shown. Remove all traces of the water soluble pen lines.
11. Bind quilting using CX5916 2 1/2" strips pieced as needed for length.

"Peppy Petals"

PATTERNS

pg 1 of 2

1/4
flower center
cut (1)
CX5911 -
sorbet

FLOWER
cut(1) CX5911 -orange

cut(1)
CX5958 -jewel

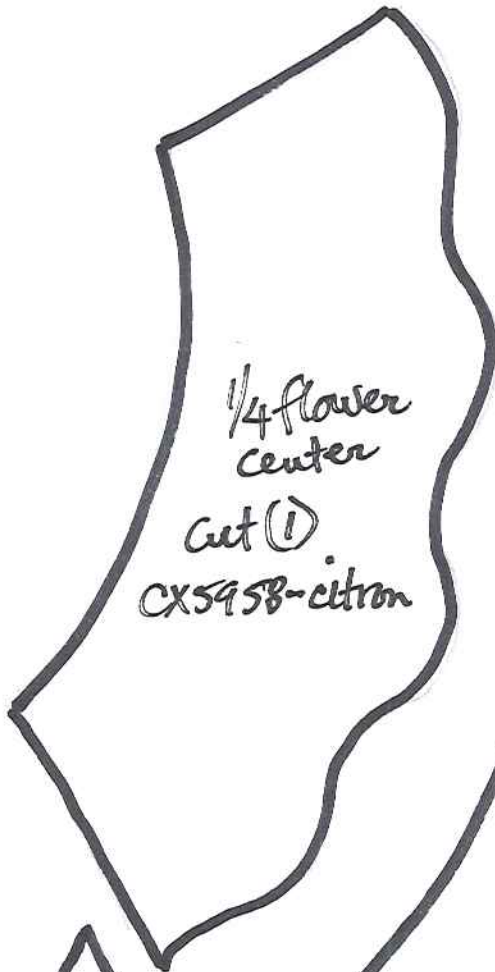
cut (1)
CX6322
limeade

cut(1)
CX5911
sorbet

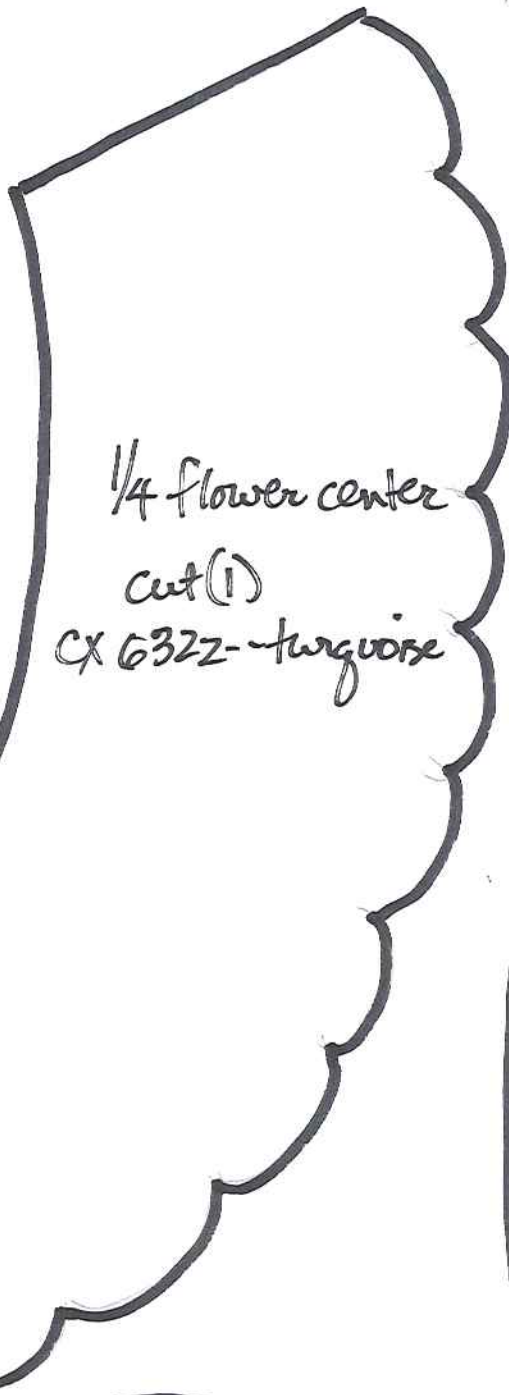
"Peppy Petals"

PATTERNS

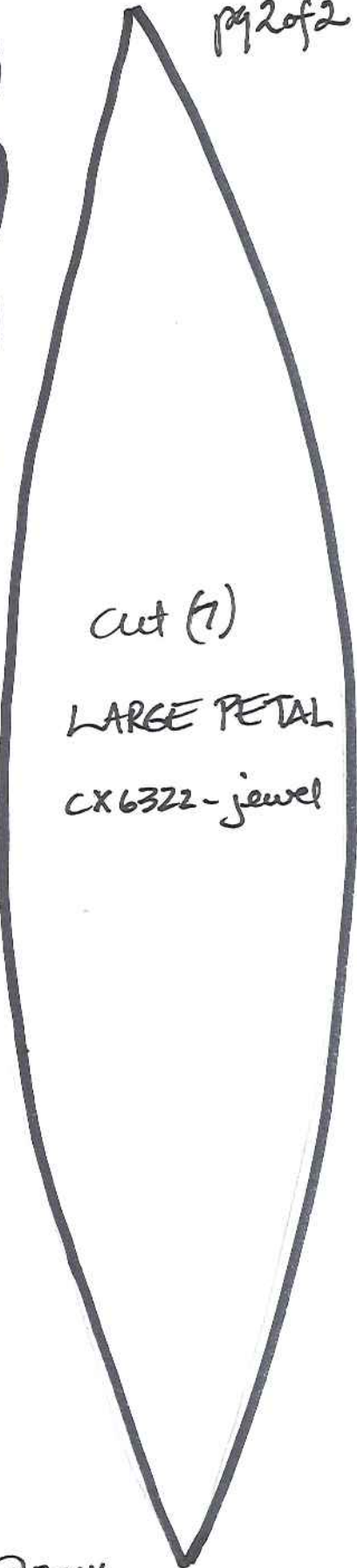
pg 2 of 2



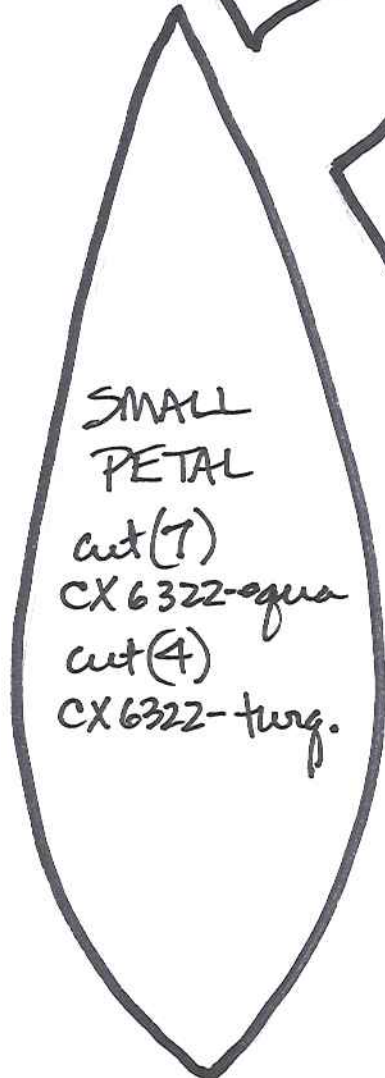
1/4 flower center
cut (1)
CX5958-citron



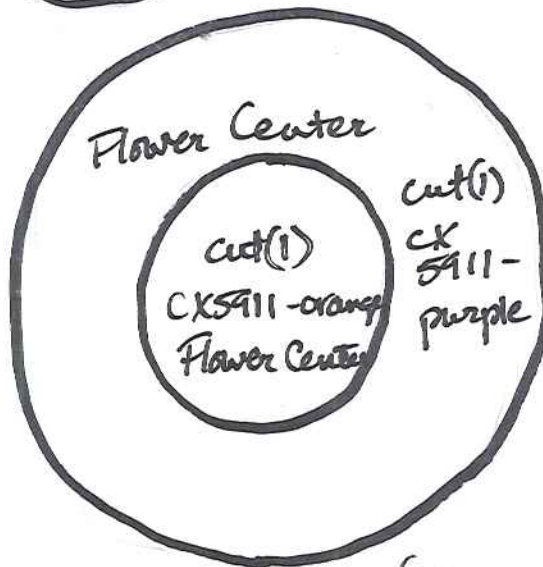
1/4 flower center
cut (1)
CX 6322-turquoise



cut (1)
LARGE PETAL
CX6322-jewel



SMALL
PETAL
cut (7)
CX 6322-aqua
cut (4)
CX 6322-turg.



Flower Center
cut (1)
CX5911-orange
Flower Center
cut (1)
CX 5911-purple